




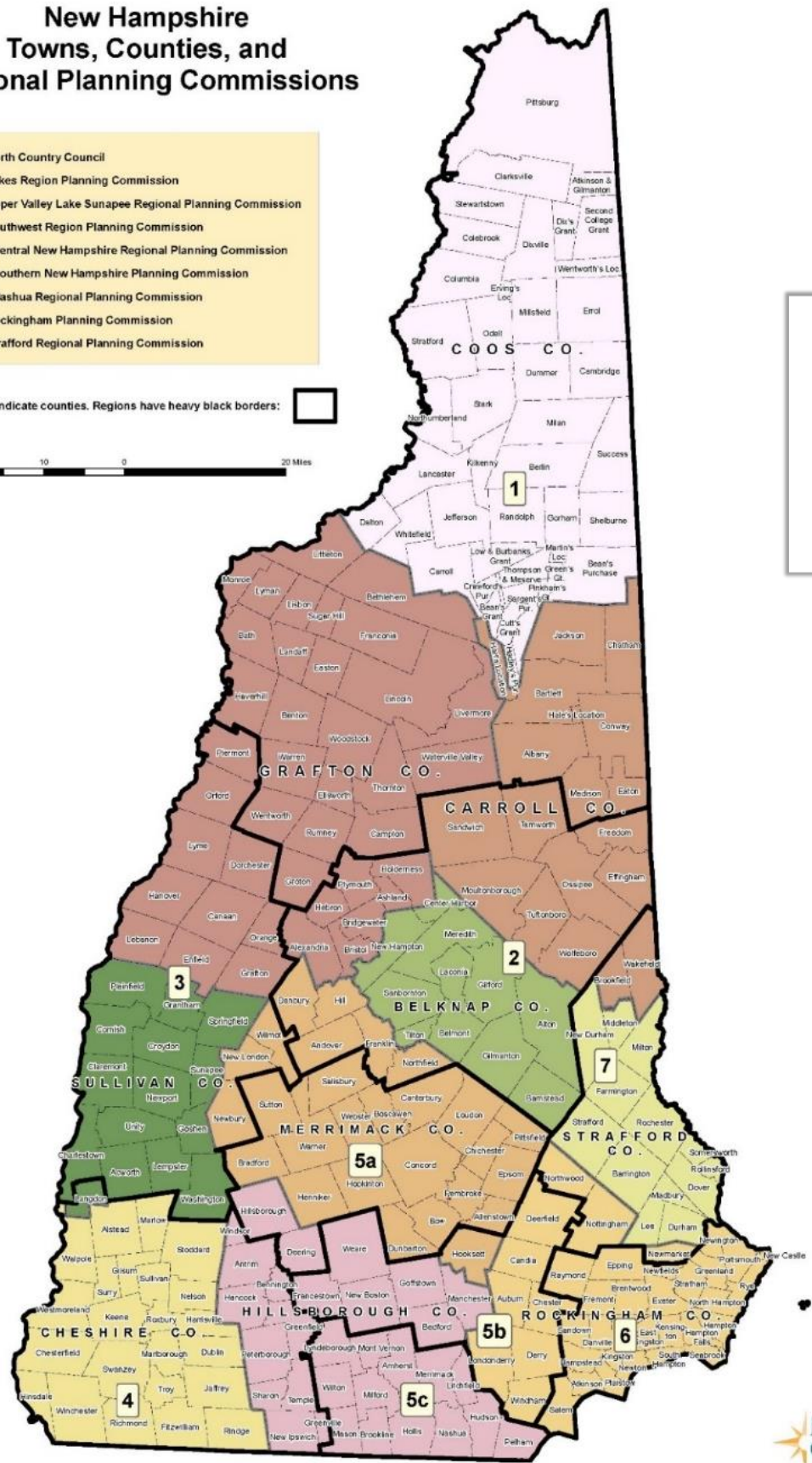
Lakes Region Planning Commission

2020 Annual Report

New Hampshire Towns, Counties, and Regional Planning Commissions

- 1. North Country Council
- 2. Lakes Region Planning Commission
- 3. Upper Valley Lake Sunapee Regional Planning Commission
- 4. Southwest Region Planning Commission
- 5a. Central New Hampshire Regional Planning Commission
- 5b. Southern New Hampshire Planning Commission
- 5c. Nashua Regional Planning Commission
- 6. Rockingham Planning Commission
- 7. Strafford Regional Planning Commission

Colors indicate counties. Regions have heavy black borders: 



LRPC is one of New Hampshire's 9 regional planning commissions established under RSA 36:46 in 1969.



NH Office of Strategic Initiatives, May 2018.



A Message from the Executive Director

Annual Report for Fiscal Year 2020

July 1, 2019 – June 30, 2020

Contents

Map of State Regional Planning Areas..... 2

Executive Director’s Message 3

Our Region..... 4

Commissioners & Executive Board..... 5

FY20 Program Highlights

 Regional..... 6

 Local 7

 Economic Development..... 8

 Household Hazardous Waste 9

 Solid Waste Management 10

 Transportation..... 11

 Community Outreach & Education 12

FY20 Budget Summary 14

FY20 Audit Letter 16

FY20 Staff & Training..... back cover

December 2020

In fiscal year 2020, the LRPC continued to proudly serve as your locally created regional planning commission, serving 31 communities around New Hampshire’s greatest lakes. We help communities plan for the future, always in search of ways to improve our healthy environment and bolster our prosperous economy.

Our budget is annually approved by our town/city-appointed commissioners and our work is overseen by executive board members who are elected by the commissioners at our annual meeting.

In this report, our FY20 highlights show that we have not missed a beat in the midst of a pandemic. Regional transportation planning is our largest focus area, but we continue to provide other traditional services like land use, emergency management, and watershed planning assistance, along with mapping and our annual household hazardous waste collection days.

In addition, we have greatly increased our solid waste and economic development planning services over the last couple of years. As you look at some of our regional programs and local initiatives, consider how to get your community or regional group involved.

We sincerely thank our commissioners and executive board members who volunteer their time to make the Lakes Region a better place for our children, as well as all the local officials, volunteers, and partners who make our regional and local initiatives a success. With your help, we expect that even more and greater things will happen in FY21!

Jeffrey Hayes, MRP
Executive Director

Plan Regionally. Grow Locally.



Our Region

Who We Are

The Lakes Region Planning Commission (LRPC) is a voluntary association of local communities that pools its resources to obtain a highly trained, professional staff to provide a wide variety of services. An Executive Board, together with the Commissioners, governs the LRPC. Operations are overseen by an Executive Director and implemented by professional planners, specialists, and support staff. LRPC recognizes that the foundation of regional decision-making lies within local communities.

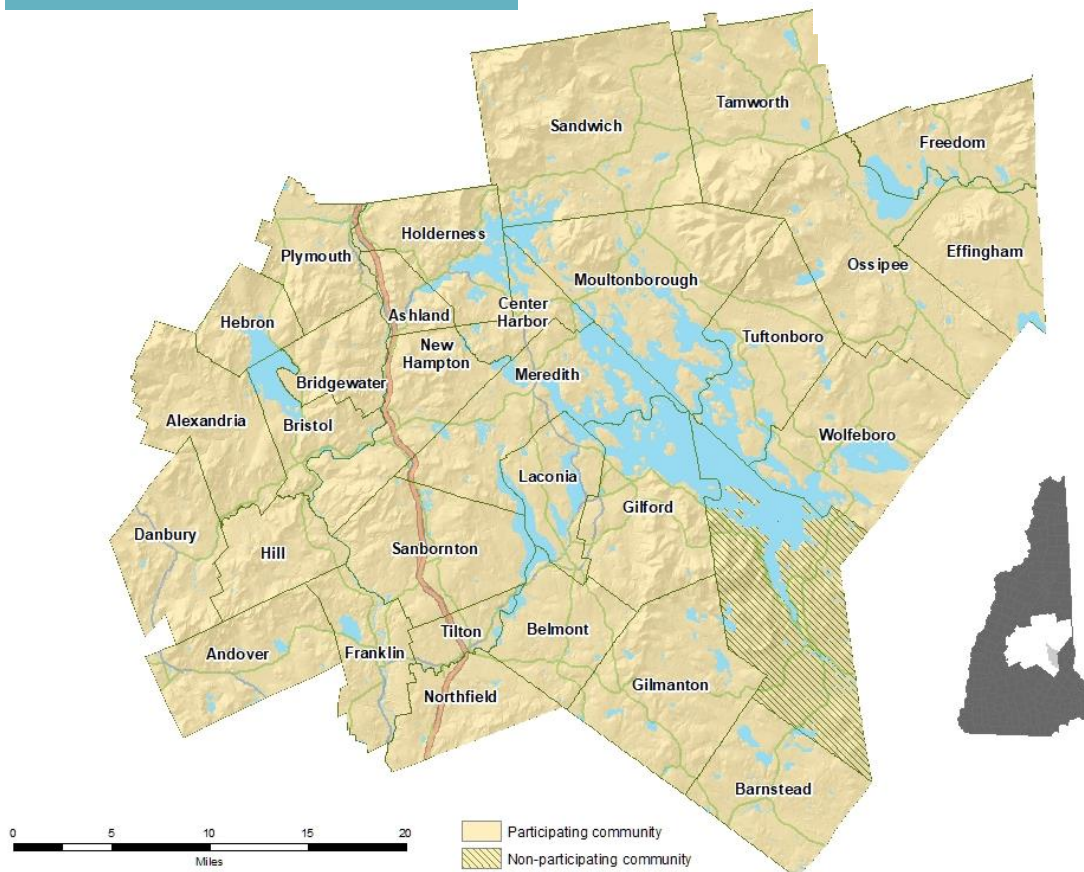
MISSION

Our mission is to provide effective planning in order to achieve and sustain a quality environment, a dynamic economy, and local cultural values by supporting community efforts through leadership, education, technical assistance, information, advocacy, coordination, and responsive representation.

Municipalities

- | | |
|---------------|----------------|
| Alexandria | Hill |
| Andover | Holderness |
| Ashland | Laconia |
| Barnstead | Meredith |
| Belmont | Moultonborough |
| Bridgewater | New Hampton |
| Bristol | Northfield |
| Center Harbor | Ossipee |
| Danbury | Plymouth |
| Effingham | Sanbornton |
| Franklin | Sandwich |
| Freedom | Tamworth |
| Gilford | Tilton |
| Gilmanton | Tuftonboro |
| Hebron | Wolfeboro |

Alton is currently a non-member



Commissioners & Executive Board

FY20 COMMISSIONERS

Alexandria

Chet Caron, *Alt.*

Andover

John Cotton

Ashland

Mardean Badger
David Toth

Barnstead

David Kerr

Belmont

George
Condodemetraky

Bridgewater

Vacant

Bristol

William Dowey
Steve Favorite

Center Harbor

Mark Hildebrand

Danbury

John Taylor

Effingham

Mark Hempton

Franklin

Tony Giunta

Freedom

Jean Marshall
Mark McConkey

Gilford

John Ayer

Gilmanton

Gary Anderson

Hebron

Mitch Manseau

Hill

Vacant

Holderness

Robert Snelling

Laconia

Dean Anson, II
Rob Mora
Peter Brunette

Meredith

Ann Butler
Lynn Montana

Moultonborough

Scott Bartlett
Barbara J. Perry

New Hampton

David E. Katz

Northfield

Wayne Crowley
Douglas Read

Ossipee

Rick St. Jean

Plymouth

Bill Bolton
John Randlett

Sanbornton

Karen Ober
Ian Raymond

Sandwich

Joanne Haight
Katy Holmes

Tamworth

Patricia Farley
Aaron Ricker

Tilton

Joseph Jesseman
Jeanie Forrester, *Alt.*

Tuftonboro

Kate Nesbit
Stephen Wingate

Wolfeboro

Roger F. Murray, III
Matthew Sullivan

FY19-20 Officers

Chair

Wayne Crowley

Vice Chair

John Ayer

Secretary

Patricia Farley

Treasurer

Barbara J. Perry

FY19-20 Executive Board

Chair Wayne Crowley

Vice Chair John Ayer

Secretary Patricia Farley

Treasurer Barbara Perry

Area 1 Commissioner John Cotton

Area 2 Robert Snelling

Area 3 Jean Marshall

Area 4 David Kerr

At Large Commissioner Dean Anson, II

At Large Steve Favorite

At Large Tony Giunta

At Large Stephen Wingate

Thank You to Our Outgoing Commissioners

Gary Anderson, Joseph Jesseman,
Mitch Manseau, Kate Nesbit, Karen Ober,
Rick St. Jean, Matthew Sullivan

Special Thanks to Immediate Past Executive Board Members

John Cotton, Area 1 Commissioner
Wayne Crowley, Chair
Barbara J. Perry, Treasurer

Regional Highlights

June 2020

ATTENTION:

Due to COVID-19, our town officials have decided **NOT TO PARTICIPATE** in the **2020 Lakes Region Household Hazardous Waste Collections**.

Resident participation is postponed until 2021

- 1 Visit lakesrc.org/services/hhw.asp to find additional disposal options in New Hampshire
- 2 Please help us spread the news and inform your fellow neighbors!
- 3 Questions? Contact your town office "insect hunter"

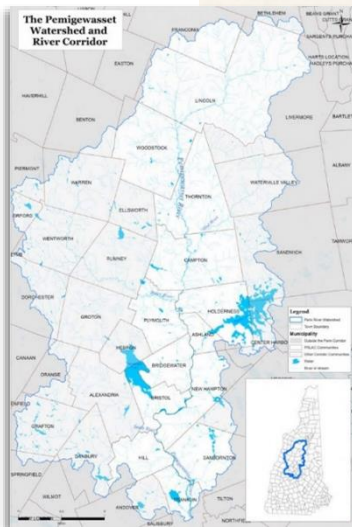
We apologize for any inconvenience.



**NEW HAMPSHIRE
PLANNING AND
LAND USE
REGULATION**

2019-2020 EDITION

Issued by
New Hampshire Office of
Strategic Initiatives
Concord, New Hampshire



Developments of Regional Impact (DRI)

We performed DRI reviews, pursuant to NH RSA 36:54, for the planning boards of Andover, Belmont (2), Northfield, and Tuftonboro and the Moultonborough Zoning Board of Adjustment. **Total DRI Reviews: 6**

Energy Supply Aggregation

As an aggregator of electricity and heating fuel, we facilitated the purchase of electricity and fuel for **21 participants** for estimated combined annual savings of **\$76,678** in electricity, **\$6,410.31** in oil, and **\$5,338.57** in propane. **Total Regional Savings: \$88,427**

Household Hazardous Waste (HHW)

We coordinated our 34th Annual HHW Collection for the region during the Summer of 2020. **Total Regional Savings: Priceless**

Intergovernmental Reviews

The LRPC continues to monitor and review project notices under the New Hampshire Intergovernmental Review Agreement, a process that requires public notification to the regional planning commissions of all projects in the region intended to receive federal financial support.

Total Reviews Completed: 8

Land Use Books Regional Purchase

We handled the regional bulk purchase and delivery of the annual edition of the New Hampshire Planning and Land Use Regulations books. 28 out of 30 member communities ordered the books at a savings of \$79 per book.

Total Regional Savings: \$27,123

Pemigewasset River Local Advisory Committee (PRLAC)

We provided administrative and technical support to the Pemigewasset River Local Advisory Committee (PRLAC), a state-chartered advisory committee under the NHDES Rivers Management and Protection Program. The Pemi River runs for 65 miles through 9 member communities, ending in Franklin to converge with the Winnepesaukee River, forming the 117-mile-long Merrimack River.

Total Communities Served: 9

Watershed Management

LRPC sought alternate funding to begin Phase II of the development of a watershed management plan for Lake Winnisquam and was awarded a grant from the Samuel Pardoe Foundation. We also completed the final watershed management plan report for Squam Lakes Association on land use regulation and water quality in the **6 towns** surrounding Squam Lakes.

Total Communities Affected: 11

Local Highlights

FY20 Local Projects Included:

Belmont	Hazard Mitigation Plan Update
Bridgewater	Hazard Mitigation Plan Update
Bristol	Land Use Regulations Audit
Center Harbor	Culverts & Closed Drainage Systems Inventory Hazard Mitigation Plan Update
Effingham	Capital Improvement Program Plan
Freedom	Master Plan Mapping Project
Gilford	Road Surface Management System (RSMS) Project
Gilmanton	Stream Crossing and Culverts Inventory Road Surface Management System (RSMS) Project
New Hampton	Road Surface Management System (RSMS) Project
Northfield	Circuit Rider Assistance to Planning and Zoning Boards
Sanbornton	Hazard Mitigation Plan Update
Tilton	Hazard Mitigation Plan Update
Tuftsboro	Hazard Mitigation Plan Update

Intern Colby St. Pierre working on a culvert and closed drainage system inventory



Photo by Assistant Planner Jessica Bighinatti

Member Services we provide include:

- Circuit Rider Assistance
- Master Plans
- Capital Improvement Plans
- Hazard Mitigation Plans
- Zoning & Site Plan Regulations
- Culvert Inventory & Assessment
- Road Surface Management System (RSMS)
- GIS Mapping

Economic Development

Grant Administration

Northern Border Regional Commission (NBRC)

As the federally-designated Local Development District (LDD) for the Northern Border Regional Commission, a federal-state funding partnership, LRPC administered a total of 9 grants in Ashland, Bristol, Laconia, Plymouth, and Wolfeboro. The grant projects ranged from renovations to the Belknap Mill to a new culinary facility at Lakes Region Community College.

Community Development Block Grants (CDBG)

We are in the midst of a major project administering over \$1.5 million in CDBG, NBRC, and USDA funds for the Town of Wolfeboro to support the G.A.L.A. Wolfeboro Makerspace project.

LRPC was awarded grant writing/administration contracts for the Microcredit program from Grafton County.

We are administering over a million dollars in [CDBG Microenterprise Technical Assistance grant](#) funding for the economic development corporations with loan funds for the northern half of the state.

We also applied for a [CDBG Microenterprise COVID-19 Grant](#) on behalf of Grafton County.

USDA Grants

We completed USDA Community Facility Grant applications totaling over \$750,000 on behalf of Effingham, Ossipee, and Tuftonboro.

We wrote an application for a USDA Community Facility Technical Assistance Training Disaster Grant on behalf of Grafton and Carroll Counties' recipients for Complete Streets/Streetscaping and were awarded funding of \$37,500.

LRPC applied for competitive funding from USDA Rural Utilities Service and was awarded another Solid Waste Management Grant.

Brownfields Oversight

Laconia State School Redevelopment Assistance

The LRPC was hired by the state's Lakeshore Redevelopment Commission as its project manager for writing and administering grants for the Lakes Region Facility economic development project.

The Lakes Region Facility is the 200-acre former Laconia State School property located off Route 106 in Laconia. Preliminary engineering showed a need of \$15 million public investment and much more in private investment to redevelop the site.

We wrote and submitted a grant application seeking \$2 million from NBRC on behalf of the Lakes Region Facility property.

We also obtained a waiver of eligibility that allowed the City of Laconia to apply for grant funding from NBRC for this economic redevelopment project.



The Lakes Region Facility (former Laconia State School) off Route 106.

Household Hazardous Waste

Summer 2020 Collection

For the 34th year in a row, the LRPC coordinated the regional Household Hazardous Waste Collections during the summer of 2020. As we have come to expect in the year of the pandemic, things did not go exactly as planned. It was, however, a very successful set of hazardous waste collections, and by several measures the program will emerge stronger.

When a couple of communities informed us in mid-May that they would not be participating this year due to the impacts of COVID-19, we sent a request to communities asking them to re-commit or withdraw without penalty by early June.

Despite concerns resulting from the pandemic, 19 of the original 25 communities recommitted. Because this also reduced both our budget by 25% and the number of collection sites from 8 to 6, we reached out to the vendor to re-negotiate our flat-fee contract for 2020, then made required adjustments to collection sites to ensure safe and convenient drop-off. Part of the new agreement that we negotiated keeps the costs to our communities consistent over the next several years, so there will be **no increase in the 2021 appropriation request for HHW**.

Special thanks to the Site Coordinators and town staff in Bristol and Effingham and their respective School Administrative Units (SAUs) for working with us in a short amount of time to change Bristol's collection site to Newfound Regional High School and to add Effingham Elementary School as a new site.

Due to COVID-19 we did not produce much in the way of brochures, stickers, and other materials as we have done in recent years. Instead, we put greater emphasis on safety measures, signage, press releases, e-blasts, and website and social media posts. We printed a new set of banners and series of signs for each collection site that can be reused for the next several years.

Most of the policies put in place this year by our vendor and the local site HHW Coordinators made for a safer, smoother collection. We will continue to send out occasional notices about disposal opportunities and alternatives to HHW via email and posts on Facebook and Instagram.

As always, annual collections are held every summer on the **Last Saturday in July/First Saturday in August**. **The next collection dates** are scheduled for **July 31** and **August 7, 2021**.

For more information on these collections, maps to the sites, and recipes and videos showing alternatives to HHW, visit us at www.LakesRPC.org.



Bristol volunteers at Newfound Regional High School

By the Numbers Summer 2020 HHW Collection

Last Saturday in July | First Saturday in August

- Lots of masks + hand sanitizer for COVID-19
- 7 collection sites instead of 8
- 1,609 households participated
- Bristol record set
- Laconia daily high record set: 426 households
- Tens of thousands of pounds of hazardous material removed from homes that did not enter our lakes, rivers, and ponds
- View the collection stats at www.LakesRPC.org

Solid Waste Management

Technical Training Series. Facilitated a Solid Waste Roundtable on Regional Solutions for Waste Management and Recycling (Part 1) in January with selectmen, economic development councils, legislators, town staff, solid waste operators, and concerned citizens in Carroll County.

In February, we facilitated Part 2 of the Roundtable, Regional Collaboration to Manage Solid Waste to discuss current challenges and opportunities with managing waste and recycling as districts/sub-regions.

Continuing our Solid Waste Roundtable technical training series, we facilitated a Medical Waste Roundtable held at Pease Public Library in Plymouth with the Northeast Resource Recovery Association (NRRRA).

State Workshop and Meetings. Hosted a workshop at the 5th Annual NH Food Systems Statewide Gathering featuring an overview of composting activity in NH, case study examples, state regulations, and opportunities for citizens to divert food waste from landfills.

Met with stakeholders involved with New Hampshire Farm to School, an initiative of the University of New Hampshire's Sustainability Institute, regarding current projects about composting/food waste reduction, program challenges, and opportunities to collaborate.

Participated in the Statewide HHW Coordinators' meeting, with a focus on the impacts of COVID-19 on collections.

First Webinar Held. Developed and presented an online webinar on March 31st on Best Management Practices for Community Composting with Director Natasha Duarte of the Composting Association of Vermont. **230 people attended.**

Plymouth State University (PSU). Worked with the Fall and Spring Technical Communications class on determining recycling participation on campus and in nearby towns, and on composting and food waste reduction.

Local Groups. Met with members of the Tamworth Recycling Project about the Town's new recycling guidelines plus grant opportunities to improve their transfer station.

Participated in an all-day camp composting workshop with YMCA North Woods/Pleasant Valley Camps in Tuftonboro in February focusing on waste reduction and composting for summer 2020 programs.

Worked with three YMCA camps in Tuftonboro to build their cooperative compost program. Continued mapping partnerships and drafting conceptual plan for eventual development into a town-wide resource.

Prepared and submitted a \$35,000 U.S. EPA Healthy Communities Grant application for the WoTu Sustainability Cooperative, a non-profit collaborative serving Tuftonboro and Wolfeboro, to increase food waste reduction practices and composting.

Outreach Materials. Designed At-A-Glance information sheets about solid waste, electronics, household hazardous waste, single vs. dual stream recycling, and food waste. Created a group advertisement for electronic and appliance repair shops in the region to encourage residents to repair their devices and reduce E-Waste. The list of businesses was promoted on social media and our website.

Produced a logo for the Lakes Region Household Hazardous Product Facility (LRHHPF) and presented it with LRHHPF Site Coordinator and Joint Board Vice-Chairman Sarah Silk to the Wolfeboro Selectboard at its meeting.

Funding for LRPC's Solid Waste program was provided by a grant from the United States Department of Agriculture (USDA).

Photos by Assistant Planner Paige Wilson



Transportation

- Completed year one of NHDOT FY20-21 Unified Planning Work Program (UPWP).
- Created Draft of outline for Regional Transportation Plan and began working on sections “how to use plan” and the vision and goals section. At the February TAC meeting, facilitated discussion of our corridor approach to updating the Regional Transportation Plan and the next Ten Year Plan process.
- Attended House Public Works & Highways hearing on HB2020 regarding the State Ten Year Transportation Improvement Plan for 2021-2030.
- Created Newsletters about Regional Transportation in April, May, and June featuring information on the Ten Year Plan, Rail Trail, and Recreational Trail Grant Program.
- Mid-State RCC Transit Plan adopted. Created map of Transportation Providers serving communities in the Carroll County and North Grafton Coos RCC Regions by type of provider for Coordinated Plan Update.
- Co-facilitated Statewide Bicycle-Pedestrian public meeting held in our region in September 2020 at the Gilford Public Library.
- Attended two Governor’s Advisory Commission on Intermodal Transportation (GACIT) meetings in our region (Laconia and Franklin) and one outside our region (Conway).
- Attended Census2020 seminar and NHDOT meeting, discussing our Regional Transportation Plan and data that can be used in the Plan.
- Participated in NHDOT Local Public Agency Training and Moultonborough’s First Impression Forum.
- Supported LRPC’s Transportation Technical Advisory Committee (TAC) which met six times during FY20 to enhance local involvement in regional transportation planning and project development.
- Completed an NHDOT Road Safety Audit (RSA) application for Meredith for a study of conditions on Main Street, between Dover Street and Lake Street, in response to a pedestrian fatal crash during the past summer. Traffic and Pedestrian Study for Main Street

Meredith application was made to the state’s Highway Safety Improvement Program (HSIP).

- Seasonal transportation technician Ian McClure has left LRPC to focus on his primary job; training is underway for interns Henry Casey and Colby St. Pierre to join Allen Constant to fulfill Ian’s role for the Traffic Counting season.
- Developed policies and protocols regarding COVID-19 for personnel working in the field. The aging LRPC van has been inspected and the registration renewed.

Transportation Technical Advisory Committee

FY20 VOTING MEMBERS

George Tuthill, Alexandria
Charles Smith / Craig Moore (Alt), Ashland
David Kerr, Barnstead
Rick Ball / Dari Sassan (Alt), Belmont
Steve Favorite / Bill Dowey (Alt), Bristol
Jeff Haines, Center Harbor
Mark Hempton, Effingham
Brian Barry / Brian Sullivan (Alt), Franklin
Scott Brooks, Freedom
Sheldon Morgan / Jason Hayden (Alt.), Gilford
Paul Perkins / James Goodwin (Alt), Gilmanton
Paul Hazelton / Patrick Moriarty (Alt), Hebron
Malcolm “Tink” Taylor, Holderness
Krista Larsen / Dean Trefethen (Alt), Laconia
John Edgar, Meredith
Bruce Woodruff / Chris Theriault (Alt), Moultonborough
Robert Pollock, New Hampton
Tracey Hutton, Northfield
Joe Fagnant / Brian Murphy (Alt), Plymouth
Johnny van Tassel, Sanbornton
John Gotjen, Tamworth
Lee Ann Moynihan, Tilton
Lloyd Wood / Mark Howard (Alt), Tuftonboro
David Ford / Matthew Sullivan (Alt), Wolfeboro

FY20 NON-VOTING MEMBERS

Jan Collins, Newfound Pathways
Glenn Cordelli, Carroll County Delegation
Paul Lockwood, NHDES Air Resources Division
Nancy Spaulding, NHDOT District 3
William Rose, NHDOT
Lucy St. John, NHDOT
Cindy Yanski, Belknap-Merrimack CAP

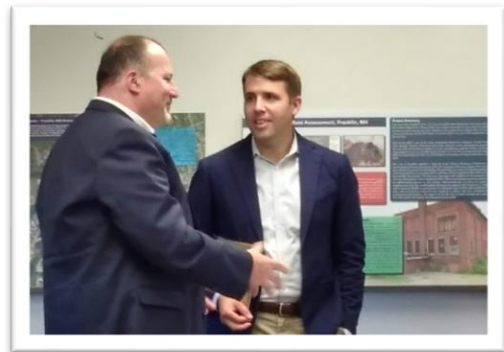
Community Outreach & Education



SEPTEMBER The Town of Plymouth hosted our September 23rd Commission Meeting at its senior center, located in a former train depot. Steve Taylor, the former state commissioner of agriculture and currently of the UNH Humanities Council, was our guest speaker. He presented a talk called **New Hampshire Roads Taken—Or Not**, which described the state’s post-war endeavor in choosing where to build new highways—and where not to—and how both choices have had lasting impacts on communities to this day.

OCTOBER U.S. Congressman Chris Pappas visited for a meet and greet following the Executive Board’s October 9th meeting and was briefed on the lack of high-speed internet access in the region’s rural areas and the cell phone testing LRPC has performed in order to challenge carrier coverage claims.

Congressman Pappas was also briefed on the environmental assessment of the Lakes Region Facility, formerly known as the Laconia State School.



Executive Director Jeff Hayes with Congressman Chris Pappas



Tim Andrews of The Nobis Group reveals positive news about the condition of the former State School site on Rt. 106 in Laconia.

LRPC’s project partner, The Nobis Group, presented its findings, which revealed a cleaner site than expected. The work was completed through LRPC’s Brownfields Assessment Program, funded by a grant from the U.S. Environmental Protection Agency.

The Town of Moultonborough hosted our October 28th meeting at its Town Hall. Guest speaker Russ Lanoie of Rural Home Technology gave a talk on septic maintenance (think proximity to lakes and drinking water) called **Best Practice Stories from the Field—Avoiding Mistakes Up Front Can Help You Later**, followed by a Q&A.

In November, Principal Planner Susan Slack wrote a feature article for New Hampshire Municipal Association’s *Town and City Magazine* on “[Protecting Water Quality with Septic System Rules](#)”.

Community Outreach & Education

DECEMBER Despite a week's delay due to an early snowstorm, we co-hosted a successful joint Legislative Forum on Economic Development on December 9th in Laconia at Lakes Region Community College (LRCC). We partnered with LRCC, Belknap Economic Development Council (BEDC), and Lakes Region Community Developers (LRCD) to provide a setting for commissioners and legislators to share Lakes Region legislative priorities.



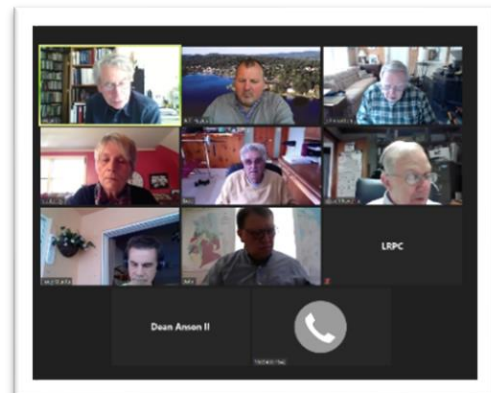
Legislative Forum on Economic Development



BEDC Board Chair Chris Kelly moderated the event, which included a speaker panel with LRPC Executive Director Jeff Hayes, LRCC President Dr. Larissa Baia, BEDC Executive Director Justin Slattery, LRCD Executive Director Carmen Lorentz, and Lakeshore Redevelopment Commission Chair George Bald. More than a dozen State Representatives attended, along with staffers from the offices of Senators

Hassan and Shaheen and Congressman Pappas. LRPC's regular meeting immediately followed the forum. Students in LRCC'S Culinary Arts Program catered the event.

MAY While the LRPC Executive Board continued to meet in March, April, May, and June, the full Commission meetings scheduled for March and April were cancelled due to the coronavirus pandemic, along with the traditional June annual meeting dinner. Instead, the LRPC hosted a webinar on May 22nd featuring an expert guest panel on the new community power law.



Executive Board Zoom Meeting

JUNE The full Commission met virtually on June 22nd and held the biennial election of officers and Executive Board members for 2-year terms for FY21-FY22. The Commission also voted unanimously to adopt the FY21 budget. Retiring officers and Executive Board members Wayne Crowley, Chair; Barbara Perry, Treasurer; and John Cotton, Area Commissioner, were recognized for their many years of service and leadership.

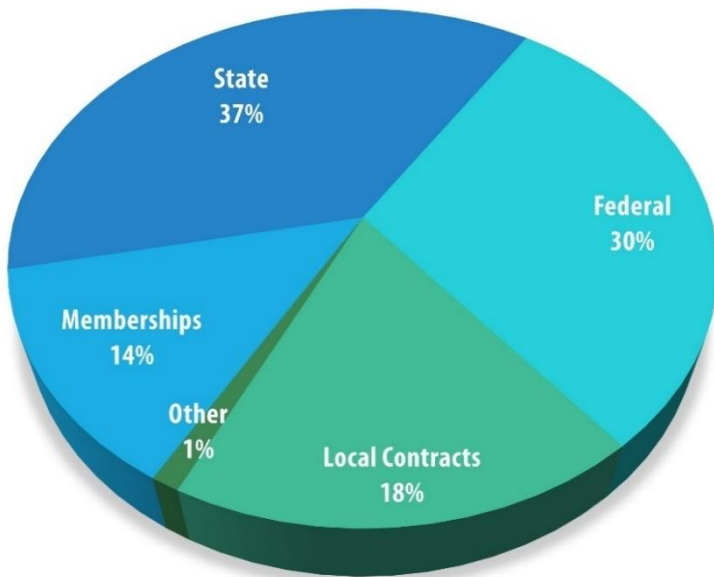
FY20 Budget Summary

As a result of the coronavirus pandemic, the annual audit was delayed from August 2020 until October 27, 2020 and concluded in November. The FY20 Audit was presented by the independent auditor to the Executive Board on December 9, 2020.

The charts below show the distribution of actual revenues and expenditures from July 1, 2019 through June 30, 2020.

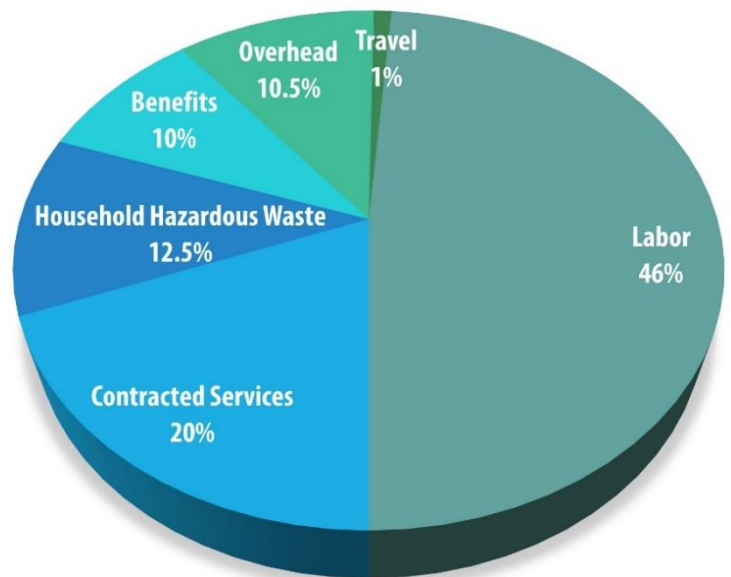
FY20 REVENUE

State	\$ 357,208
Federal	\$ 285,707
Local Contracts	\$ 172,678
Member Dues	\$ 128,530
Other	\$ 10,643
TOTAL	\$ 954,765



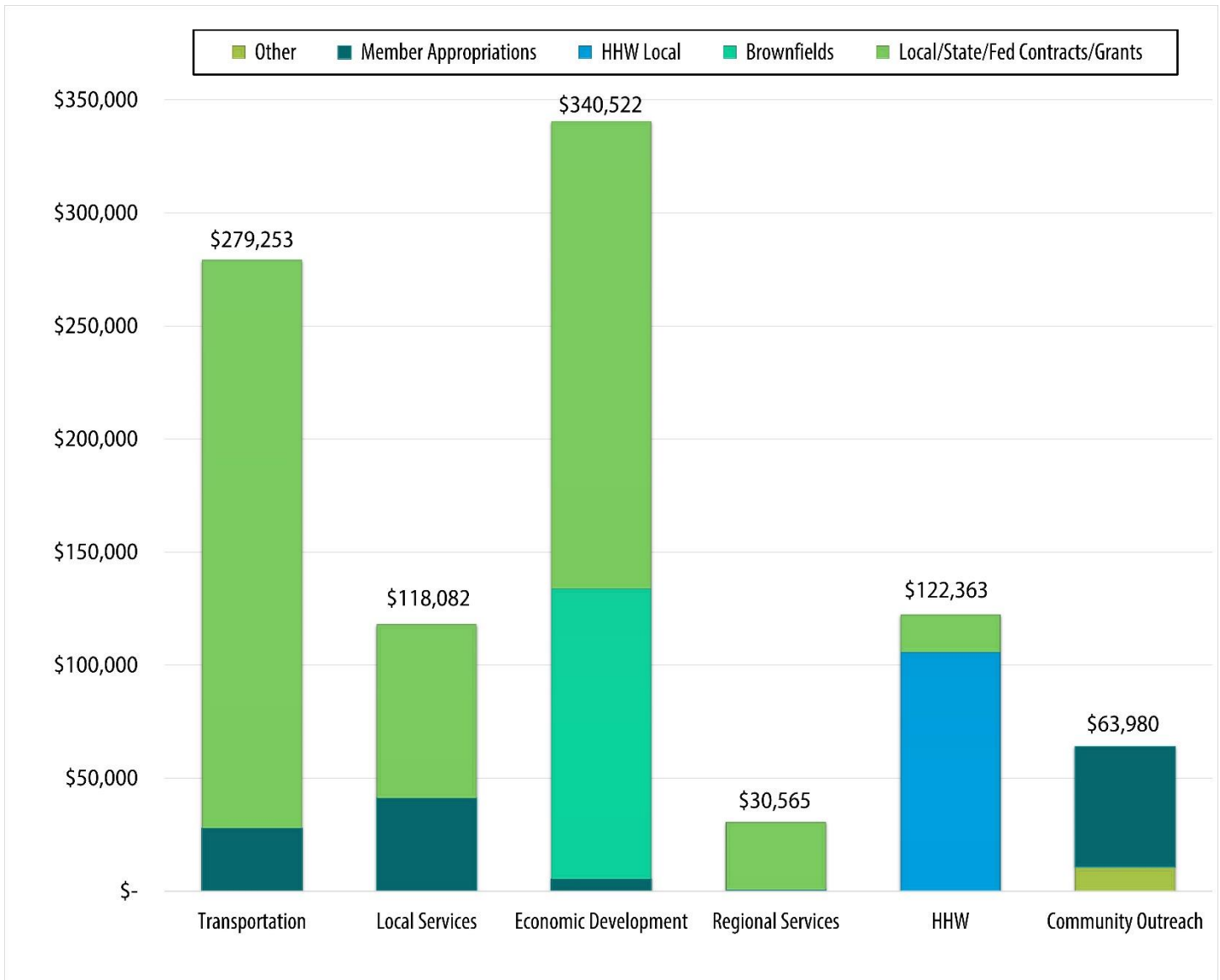
FY20 EXPENSES

Labor	\$ 438,647
Contracted Services	\$ 171,899
Household Hazardous Waste	\$ 101,224
Benefits	\$ 81,080
Overhead	\$ 98,238
Travel	\$ 8,673
TOTAL	\$ 899,761



FY20 Budget Summary (continued)

FY20 REVENUE BY PROGRAM



Annual Audit Letter

Hennessey & Vallee, PLLC

Certified Public Accountants



INDEPENDENT AUDITORS' REPORT

To the Board of Commissioners
Lakes Region Planning Commission

Report on the Financial Statement

We have audited the accompanying financial statements of the governmental activities, and the major fund of Lakes Region Planning Commission, as of and for the year ended June 30, 2020, and the related notes to the financial statements, which collectively comprise the Commission's basic financial statements as listed in the Table of Contents.

Management's Responsibility for the Financial Statements

The Commission's management is responsible for the preparation and fair presentation of these financial statements in accordance with accounting principles generally accepted in the United States of America; this includes the design, implementation, and maintenance of internal control relevant to the preparation and fair presentation of financial statements that are free from material misstatement, whether due to fraud or error.

Auditors' Responsibility

Our responsibility is to express opinions on these financial statements based on our audit. We conducted our audit in accordance with auditing standards generally accepted in the United States of America and the standards applicable to financial audits contained in *Government Auditing Standards*, issued by the Comptroller General of the United States. Those standards require that we plan and perform the audit to obtain reasonable assurance about whether the financial statements are free from material misstatement.

An audit involves performing procedures to obtain audit evidence about the amounts and disclosures in the financial statements. The procedures selected depend on the auditors' judgment, including the assessment of the risks of material misstatement of the financial statements, whether due to fraud or error. In making those risk assessments, the auditor considers internal control relevant to the entity's preparation and fair presentation of the financial statements in order to design audit procedures that are appropriate in the circumstances, but not for the purpose of expressing an opinion on the effectiveness of the entity's internal control. Accordingly, we express no such opinion. An audit also includes evaluating the appropriateness of accounting policies used and the reasonableness of significant accounting estimates made by management, as well as evaluating the overall presentation of the financial statements.

We believe that the audit evidence we have obtained is sufficient and appropriate to provide a basis for our audit opinions.

Opinions

In our opinion, the financial statements referred to above present fairly, in all material respects, the respective financial position of the governmental activities and the major fund of Lakes Region Planning Commission, as of June 30, 2020, and the respective changes in financial position, for the year then ended in conformity with accounting principles generally accepted in the United States of America.

125 North State Street, Concord, NH 03301 • Telephone 603.225.0941 • Fax 603.218.6018
www.hvcpafirm.com

Annual Audit Letter (continued)

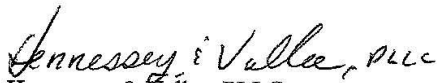
Other Matters

Required Supplementary Information

Accounting principles generally accepted in the United States of America require that the Management's Discussion and Analysis on pages 3-6 and the Schedule of Pension Liabilities and Contributions on pages 23 and 24 be presented to supplement the basic financial statements. Such information, although not part of the basic financial statements, is required by the *Governmental Accounting Standards Board*, who considers it to be an essential part of the financial reporting for placing the basic financial statements in an appropriate operational, economic, or historical context. We have applied certain limited procedures to the required supplementary information in accordance with auditing standards generally accepted in the United States of America, which consisted of inquiries of management about the methods of preparing the information and comparing the information for consistency with management's responses to our inquiries, the basic financial statements, and other knowledge we obtained during our audit of the basic financial statement. We do not express an opinion or provide any assurance on the information because the limited procedures do not provide us with evidence sufficient to express an opinion or provide any assurance.

Other Reporting Required by Government Auditing Standards

In accordance with *Government Auditing Standards*, we have also issued our report dated December 31, 2020, on our consideration of the Commission's internal control over financial reporting and on our tests of its compliance with certain provisions of laws, regulations, contracts, and grant agreements and other matters. The purpose of that report is to describe the scope of our testing of internal control over financial reporting and compliance and the results of that testing, and not to provide an opinion on internal control over financial reporting or on compliance. That report is an integral part of an audit performed in accordance with *Government Auditing Standards* in considering the Commission's internal control over financial reporting and compliance.


Hennessey & Vallee, PLLC
Concord, New Hampshire

December 31, 2020

FY20 Staff

Executive Director	Jeff Hayes
Finance Administrator	Carl Carder
Principal Planner	Susan Slack
Regional Planner	David Jeffers
Solid Waste Planner	Paige Wilson
Assistant Planner	Jessica Bighinatti
Grants Administrator	Tracey Secula
Executive Assistant	Tracey Ciriello
Transportation Technician	Ian McClure
Transportation Technician	Allen Constant
Intern	Henry Casey
Intern	Colby St. Pierre



FY20 Staff Training

CDFR Workshop
CDBG Training Webinars

FEMA Training on Hazard Mitigation Plan Development

UNH Cooperative Extension's Downtown Connection to Trails Webinars

ESRI's Story Maps Webinar

Statewide & Metropolitan Transportation Programming Training

UNH SADES Training with RSMS Data Collection and Forecasting

VISIT US ONLINE: www.LakesRPC.org | [Facebook](#) | [Instagram](#)

