

# Industry and Employment - Alexandria, NH

Industry Name	▼ Alexandria, NH	Counties Grafton County	States New Hampshire	Entire Country United States
Manufacturing	21%	10%	14%	11%
Health Care & Social Assistance	16%	18%	16%	15%
Retail Trade	15%	10%	11%	10%
Construction	14%	8%	8%	7%
Educational Services	8%	19%	10%	10%
Accommodation & Food Services	5%	5%	4%	6%
Public Administration	4%	3%	4%	5%
Professional/Scientific/Tech Services	3%	6%	8%	8%
Other Services (excl Public Administration)	3%	5%	4%	5%
Agriculture, Forestry, Fishing, Hunting	2%	2%	1%	1%
Transportation & Warehousing	2%	2%	3%	5%
Admin, Support, Waste Management Services	2%	3%	4%	4%
Utilities	1%	0%	1%	1%
Information	1%	1%	2%	2%
Finance & Insurance	1%	3%	5%	5%
Real Estate	1%	2%	2%	2%
Mining, Quarrying, Oil & Gas Extraction	0%	0%	0%	1%
Wholesale Trade	0%	1%	2%	3%
Management of Companies/Enterprises	0%	0%	0%	0%
Arts, Entertainment & Recreation	0%	1%	1%	2%

## Employment



49%

White Collar



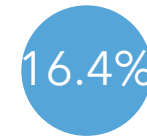
34%

Blue Collar



17%

Services



Unemployment Rate

## Businesses



46

Total Businesses



183

Total Employees



No High School Diploma



47%

High School Graduate



29%

Some College



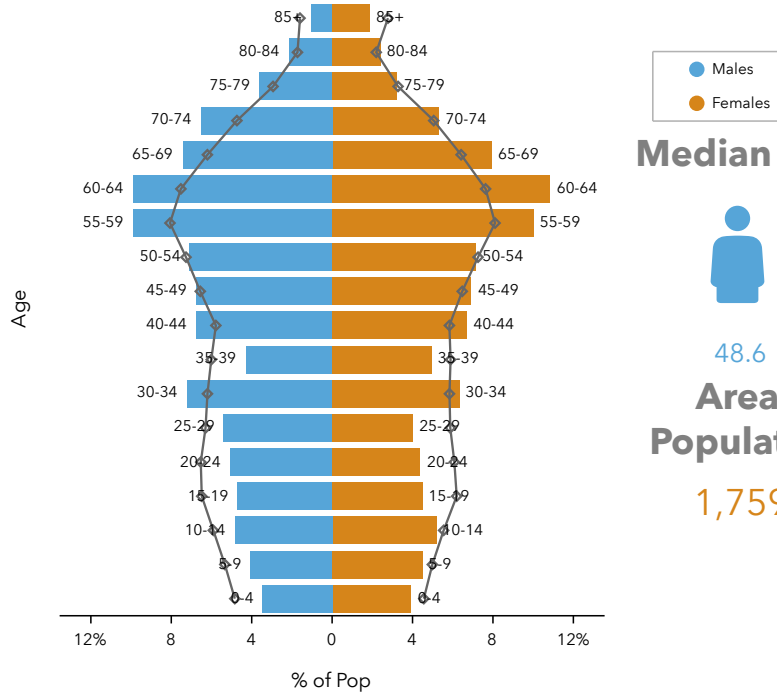
16%

Bachelor's/Grad/Prof Degree

## Educational Attainment

# Population and Age - Alexandria, NH

## Age Pyramid



Dots show comparison to New Hampshire

## Median Age

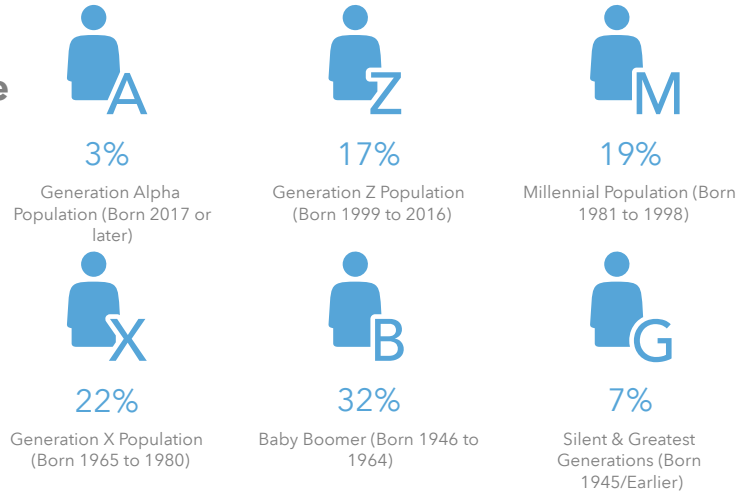


48.6

## Area Population

1,759

## 2020 Generational Makeup



## Tapestry Segments



6C

### The Great Outdoors

700 households

100.0%

of Households

### Population Group

### Growth Rate

2000-2010 Population: Annual Growth Rate (U.S. Census) 1.96%

2010-2020 Population: Annual Growth Rate (Esri) 0.85%

2020-2025 Population: Annual Growth Rate (Esri) 0.72%

# Housing - Alexandria, NH

## Housing Statistics



\$186,503

Median Home Value



\$9,536

Average Spent on Mortgage & Basics



\$725

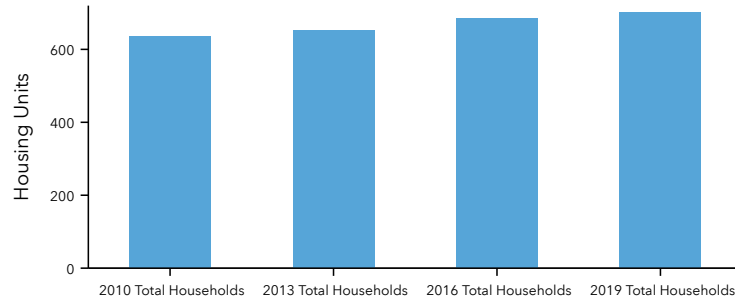
Median Contract Rent



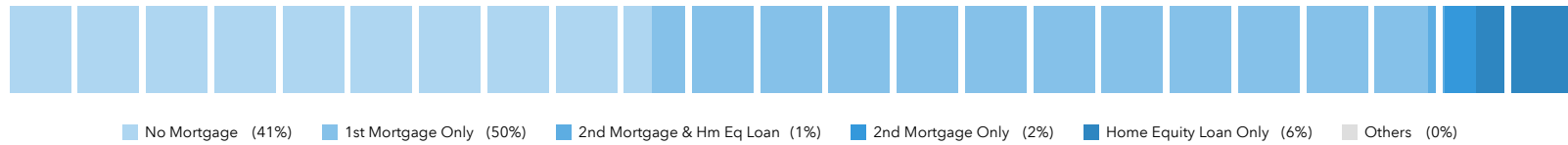
2.51

2020 Average Household Size (Esri)

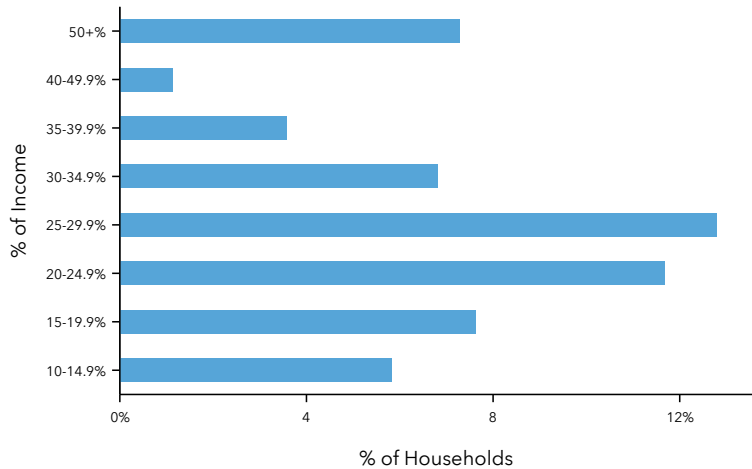
## Total Households 2010 -2019



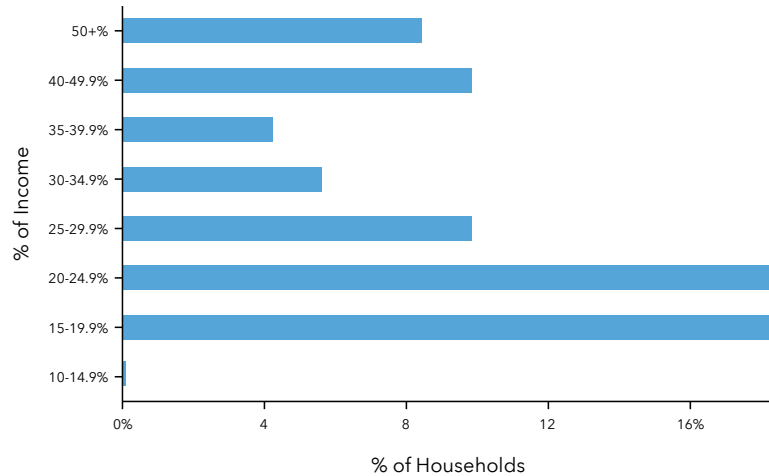
## Mortgage Spectrum



## Mortgage Payments as a % of Income



## Rent as a % of Income



# Income -Alexandria, NH

## 2020 HH Net Worth



\$168,508

Median Net Worth



\$465,137

Average Net Worth

## Income Statistics

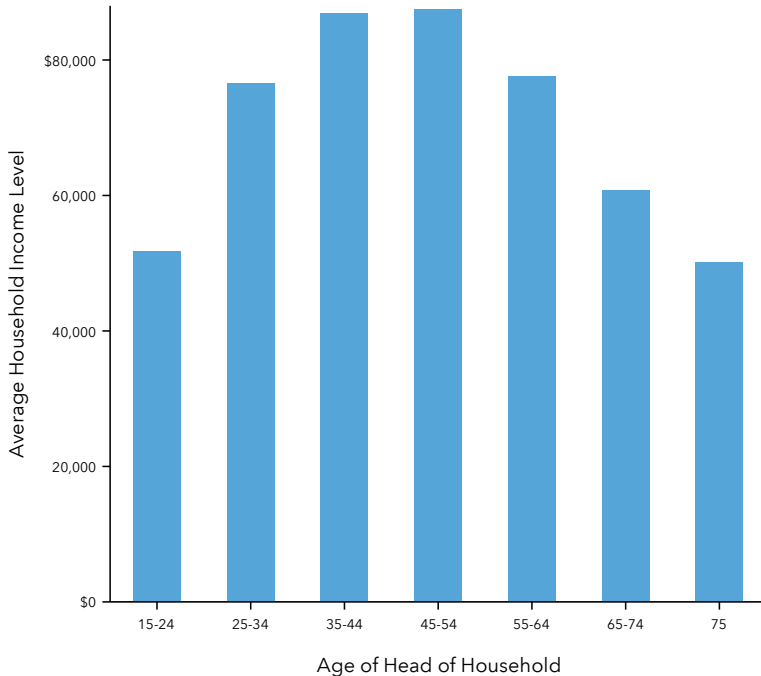
	Alexandria, NH	Counties	States	Entire Country
		Grafton County	New Hampshire	United States

2020 Per Capita Income \$29,422 \$38,150 \$39,400 \$34,136

2020 Median Household Income \$62,250 \$65,194 \$75,181 \$62,203

2020 Average Household Income \$73,934 \$89,407 \$98,779 \$90,054

## 2020 Income by Age



## 2020 Household Income

