

# Industry and Employment - Moultonborough, NH

Industry Name	Moultonborough, NH	Counties Carroll County	States New Hampshire	Entire Country United States
Health Care & Social Assistance	18%	17%	16%	15%
Professional/Scientific/Tech Services	14%	6%	8%	8%
Construction	13%	16%	8%	7%
Admin, Support, Waste Management Services	10%	7%	4%	4%
Retail Trade	8%	14%	11%	10%
Manufacturing	6%	7%	14%	11%
Educational Services	6%	9%	10%	10%
Real Estate	5%	2%	2%	2%
Information	4%	2%	2%	2%
Public Administration	4%	3%	4%	5%
Accommodation & Food Services	3%	6%	4%	6%
Transportation & Warehousing	2%	1%	3%	5%
Other Services (excl Public Administration)	2%	2%	4%	5%
Wholesale Trade	1%	1%	2%	3%
Utilities	1%	1%	1%	1%
Finance & Insurance	1%	2%	5%	5%
Arts, Entertainment & Recreation	1%	2%	1%	2%
Agriculture, Forestry, Fishing, Hunting	0%	1%	1%	1%
Mining, Quarrying, Oil & Gas Extraction	0%	0%	0%	1%
Management of Companies/Enterprises	0%	0%	0%	0%

## Employment



70%

White Collar



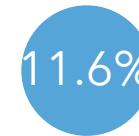
15%

Blue Collar



16%

Services



Unemployment Rate

## Businesses



257

Total Businesses



2,297

Total Employees



No High School Diploma



25%

High School Graduate



26%

Some College



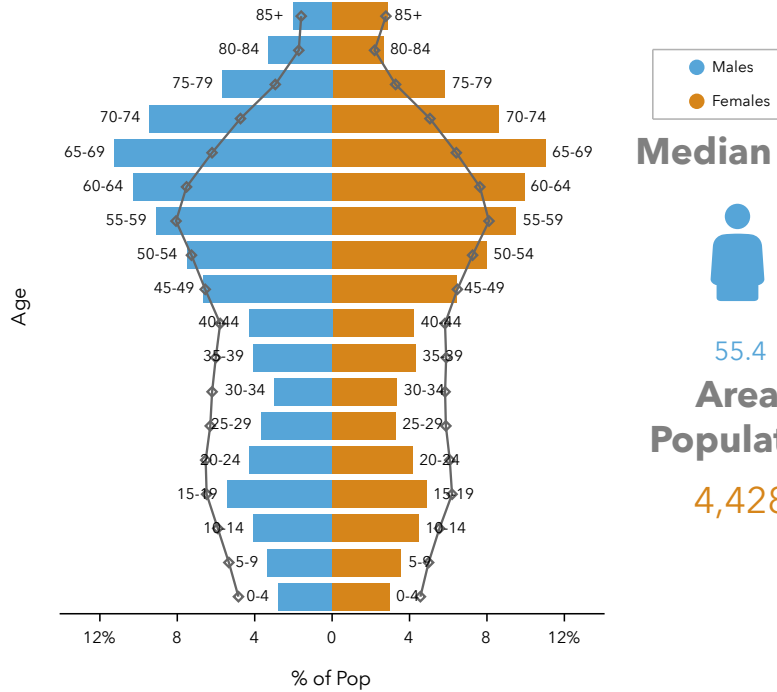
46%

Bachelor's/Grad/Prof Degree

## Educational Attainment

# Population and Age - Moultonborough, NH

## Age Pyramid



Dots show comparison to New Hampshire

Population Group	Growth Rate
2000-2010 Population: Annual Growth Rate (U.S. Census)	-1.03%
2010-2020 Population: Annual Growth Rate (Esri)	0.89%
2020-2025 Population: Annual Growth Rate (Esri)	0.62%

## Median Age

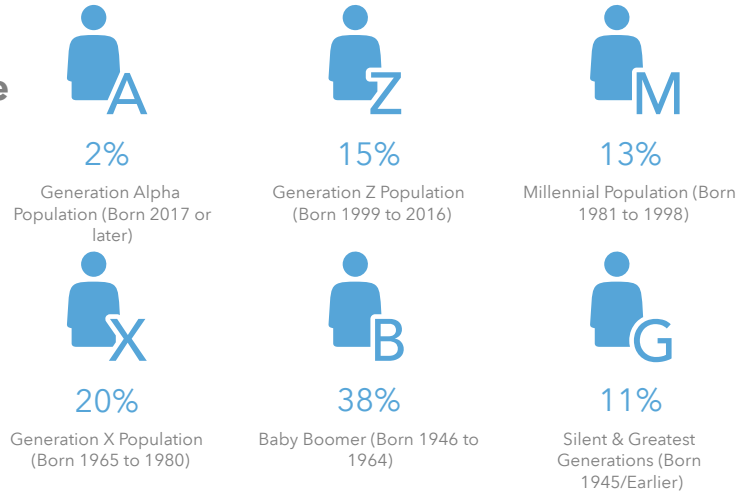


55.4

## Area Population

4,428

## 2020 Generational Makeup



## Tapestry Segments

	<b>Rural Resort Dwellers</b> 875 households	<b>45.4%</b> of Households
	<b>Silver and Gold</b> 530 households	<b>27.5%</b> of Households
	<b>The Great Outdoors</b> 522 households	<b>27.1%</b> of Households

# Housing - Moultonborough, NH

## Housing Statistics



\$355,432

Median Home Value



\$14,612

Average Spent on Mortgage & Basics



\$883

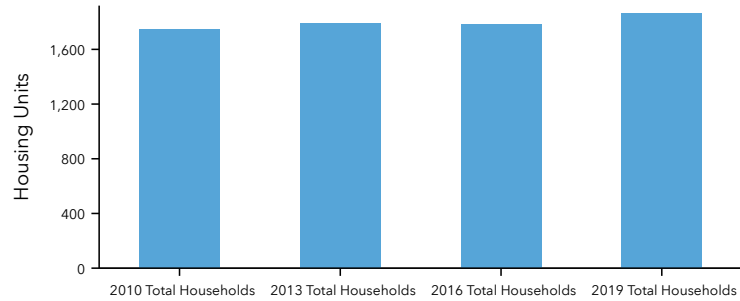
Median Contract Rent



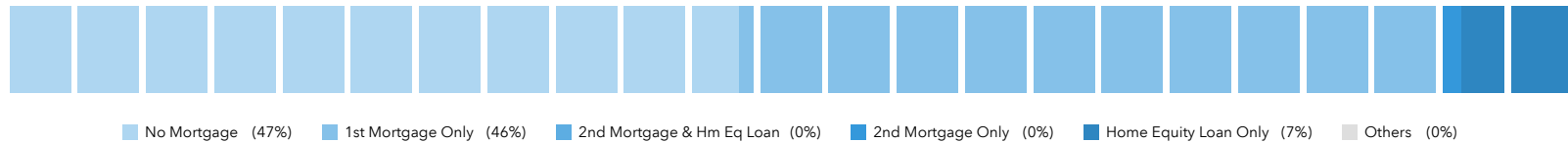
2.30

2020 Average Household Size (Esri)

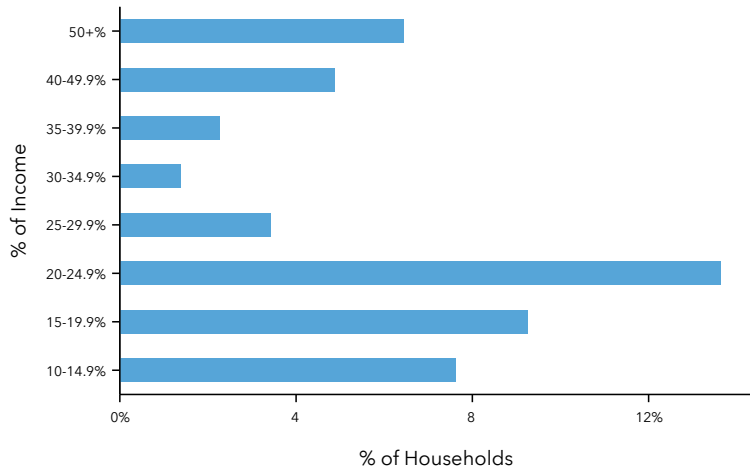
## Total Households 2010 -2019



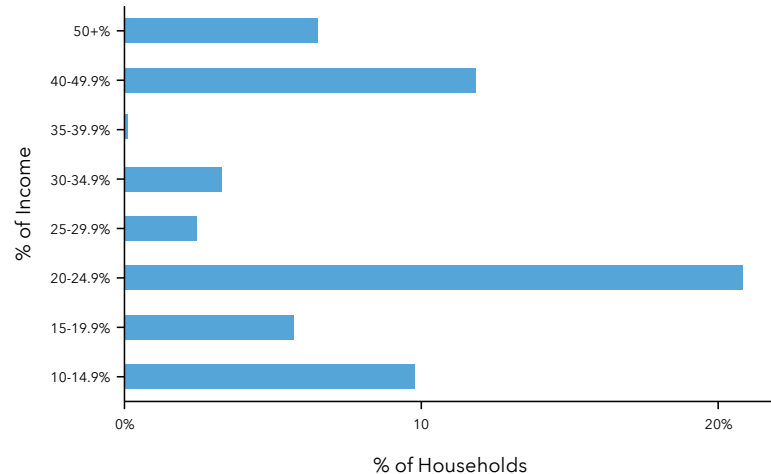
## Mortgage Spectrum



## Mortgage Payments as a % of Income



## Rent as a % of Income



# Income - Moultonborough, NH

## 2020 HH Net Worth



\$326,819

Median Net Worth



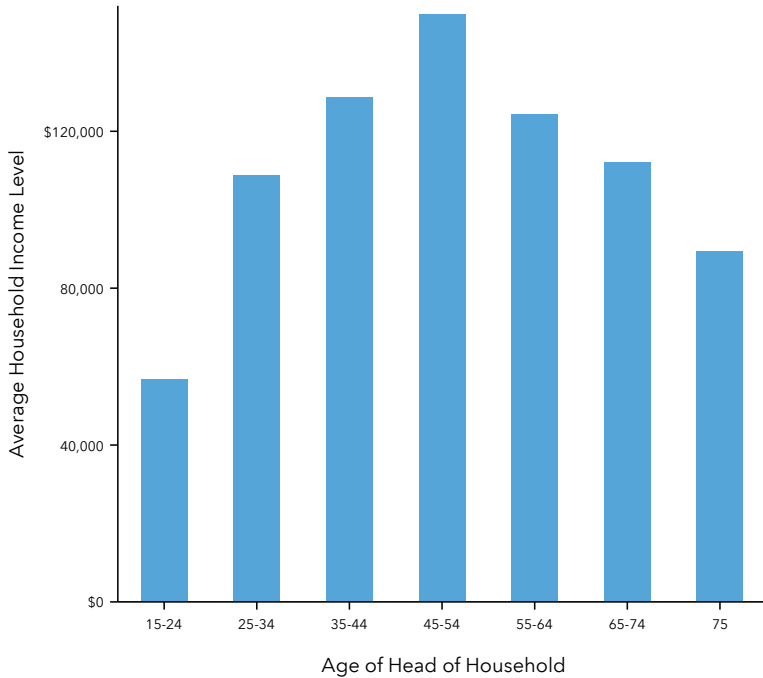
\$1,819,553

Average Net Worth

## Income Statistics

	Moultonborough, NH	Counties Carroll County	States New Hampshire	Entire Country United States
2020 Per Capita Income	\$51,776	\$35,902	\$39,400	\$34,136
2020 Median Household Income	\$76,538	\$58,380	\$75,181	\$62,203
2020 Average Household Income	\$118,975	\$80,744	\$98,779	\$90,054

## 2020 Income by Age



## 2020 Household Income

