

ATLAS
OF THE
CITY OF
HOLYOKE
MASS.

BY
RICHARDS MAP CO.
SPRINGFIELD, MASS.

1911

A Map
6H76:1911
R51s

Atlas
Mass
Holyoke
1911
Annex

RICHARDS
STANDARD
ATLAS
OF THE
CITY OF HOLYOKE
MASSACHUSETTS

CONTAINING

Ten Double Page Maps in Colors, Covering the Entire City, Showing Every Lot Line, Building, Owners' Name, Electric and Steam Railways, Sewers, Water Mains, Etc.

Based upon, and carefully compiled from, the official plans, surveys and records of the City Engineers, Assessors and other Municipal Departments, together with private plans, and from actual surveys and investigations by the publishers' special corps of Engineers.

STATE LIBRARY
OF
MASSACHUSETTS

UNDER PERSONAL DIRECTION OF HAROLD H. RICHARDS

CONSULTING LOCAL CIVIL ENGINEERS

T. J. MacCARTHY
City Engineer

W. E. SAWIN, C. E.
Of Holyoke Water Power Co.

JAS. L. TIGHE
Civil Engineer

BOARD OF ASSESSORS

J. J. KELLY

J. J. KEANE

W. G. BEAUDRO

PUBLISHERS' CORPS OF CIVIL ENGINEERS AND DRAUGHTSMEN

H. H. RICHARDS
H. C. JOHNSON

R. B. RICHARDS

S. D. COWARD
R. L. JACOB

PUBLISHED BY

RICHARDS MAP COMPANY
SPRINGFIELD, MASSACHUSETTS

1911

Index to Streets, Parks, Cemeteries, Etc.

City of Holyoke		STREETS	PLATES	STREETS	PLATES	STREETS	PLATES
Adams	3	Edgewood	7	Longwood Ave.	5	River Ter.	8
Albion	2	Elliot	8	Lyman	1, 2	Rock Valley	A
Alderman	6	Ellsworth	3	Lynwood	7	Rock Valley Rd.	A
Allyn	7	Elm	1, 4, 5	Madison Ave.	8	Roosevelt Ave.	6
Amherst	8	Elmwood	A	Magnolia	4, 6	Ross Ave.	5, 6
Appleton	1, 2, 3, 4, 7	Elmwood Ave.	5	Main	2, 3	Russell Ter.	5
Arlington	7	Elmwood Cemetery	5	Maple	1, 4, 5	Samosett	2
Arlington Ave.	7	Elmwood Park	A, 4, 5, 6	Martin	5, 6	Sargeant	3, 4, 6
Arthur	3	Ely	2	Meadow	5	School	1
Ashley Reservoir	A	Ely Ct.	2	Mechanic	3	Shawmut Ave.	7
Avon Place	4	Essex	4	Merrick	6	Sheridan	5
				Middlesex	5	Sherman	5
Ball	5	Fairfield Ave.	7	Miller Ave.	7	Smiths Ferry	A, 9
Beacon Ave.	7	Ferguson Place	4	Montgomery Ave.	8	Sonoma Pl.	1
Beech	1, 4, 6	Ferry Road	5	Morgan	7, 8	South	3, 5
Berkshire	5	Folsom	8	Morrill Ave.	8	South Bridge	3
Bigelow	1, 4	Forestdale Ave.	7	Mosher	2	South East	3
Blake	8	Forestdale Cemetery	4, 6, 7	Mountain Park	9	South Main	5
Bond	4	Fountain	1	Mountain Road	A	South Canal	3
Bowers	2	Franklin	4, 6	Mt. Tom	A, 9	Southampton Rd.	A
Bray Lane	6	Front	1, 4	Mt. Tom Junction	A, 9	South Summer	3
Brightside	A, 3	Gates	5, 6	Mt. Tom State Reservation	9	Spring	3
Brightwood	5	Germania Park	3	Mt. Nonotuck	A, 9	Springdale	A
Bristol Place	4	Gilman	5	Monroe	7	Springdale Ave.	5
Brooks Ave.	7	Glen	5	Myrtle Ave.	5	Springfield St.	A, 3, 5
Brown Ave.	5	Grandview Ave.	6	Newton	4	Stanford	8
		Grant	5	Newton Day Pond Rd.	5	State Reservation	9
Cabot	3, 4	Greenwood Ave.	6	Newton Place	1	Stebbins	5
Calvary Cemetery	5	Grover	2	Nonotuck	7, 8	St. James Ave.	6, 7
Canby	7	Hamilton	3	Northampton	A, 5, 6, 7, 8, 9	St. Jerome Ave.	6, 7
Canonchet Park	2	Hamilton Park	3	North Bridge	2	St. Jerome Cemetery	6, 7
Carleton	5, 6	Hampden	1, 7	North Canal	2	St. Vincent	3
Cedar Grove Ave.	9	Hampden Park	1	North East	2	Suffolk	1
Center	2	Hampden Pond Road	A	Norfolk	5	Summer	2, 3
Chapin	5, 6	Hampshire	4	North Summer	2	Sycamore	1, 4, 6
Chapin Ave.	7	Hancock	5	Oak	1, 4	Tannery Brook Rd.	A
Chapin Square	5	Harrison Ave.	5	Oakdale	A	Taylor	7, 8
Chapman Ave.	6	Harvard	8	Oakwood	5	Temple	5
Charles	5	High	1, 4, 5	O'Connor Ave.	7	The Island	7
Chase Ave.	1	Highlands	A	Old County Road	5, A	Thorpe Ave.	7
Cherry	A, 6	Highland Ave.	7, 8	Olive Ave.	7	Thorpe Place	1
Chestnut	1, 4	Highland Park	A, 8	Oliver	1	Union	1
Clark	5	Highland Ter.	8	Onoko	2	Vernon	5
Clary Ave.	6	Hillcrest Ave.	5, 6	Orchard	6	View	5
Cleveland	8	Hillside Ave.	6	Oscar	3	Vine	7
Clinton Ave.	1, 7	Hitchcock	5, 6	Papineau	5	Waldo	7
Coit	6	Homestead Ave.	A, 6	Park	3	Walnut	1, 4, 6
Columbus Ave.	6	Howard	7, 8	Parker	7	Washington Ave.	5
Columbus	5	Ingleside	A	Pearl	7, 8	Water	2, 3
Commercial	4	Ingleside St.	A, 3	Peltiah	3	West	2
Congress	5	Irving	8	Pequot	2	West (Ingleside)	A
Cook	5	Isabella	6	Pinehurst Rd.	6	Westfield Rd.	A, 6
Cornell	8	Ivy Ave.	7	Playground	1	West Glen	5
Corser	6	Jackson	3, 4, 5, 6	Pleasant	7, 8	W. Holyoke (Rock Valley)	A
Cottage Ave.	7	James	5	Plymouth Place	4	Weymouth Ave.	6
Crescent	3	Jarvis Ave.	A	Pond Road	A	Whitney Ave.	A
Cross	2	Jefferson	8	Poplar	4, 7	Whiting Ave.	1
		John	1	Potvin Ave.	2	Whiting Street Res.	A, 9
Dartmouth	8	Jones Point	8	Prew Ave.	5	Williams	7
Davis	5, 6	King	6	Princeton	8	Willow	5
Day Ave.	5	Lafayette	7	Prospect	1	Winter	2, 3
Dexter	5	Lafayette Ave.	7	Prospect Park	1	Winthrop	6
Division	1	Laurel	5	Queen	6	Wolcott	5
Dover	7	Lawler	5	Quincy Ave.	6	Woodland Ave.	6
Dwight	1, 2, 7	Lexington Ave.	8	Race	2, 3, 5	Worcester Pl.	4
		Lincoln	7	Railroad	1	Wyckoff Ave.	8
East Dwight	2	Linden	1, 4, 6	Riverside Park	5	Yale	8
East Miller Ave.	2	Locust	1, 4, 6			York	8
Eastern Promenade	6						
Easthampton Road	A, 7, 9						

Fire Alarm Boxes		BOX	LOCATION	BOX	LOCATION	BOX	LOCATION
3	Mt. Tom Engine House	41	High and Lyman	131	East Dwight and Bridge	613	Cabot and Elm
4	Center and Lyman	42	Union and Fountain	132	Crocker Paper Co.	614	Commercial and Plymouth Pl.
5	Center and Mosher	43	Lyman Mills	133	Ely and Bowers	615	High and Avon Place
6	Gill Paper Co.	45	High and John	134	Holyoke St. Ry. Car Sheds	616	Skinner Silk Mill, No. 2
7	Nonotuck Paper Co., No. 2	46	Elm and Fountain	135	Ely and Summer	617	Suffolk and Pine
8	Bridge and Ely	47	Conn. Valley Lumber Co.	211	National Blank Book Co.	618	Farr Alpaca, No. 3
12	Nonotuck Paper Co., No. 1	48	High and Dwight	212	Main and Cabot	619	Pine and Essex
13	Albion Paper Co.	51	Emerald Hose House	213	H. W. P. Co. Building	621	Wm. Skinner Mfg. Co.
14	Valley Paper Co.	52	Lyman and Walnut	214	Franklin Paper Co.	622	Hampden and Elm
15	Hadley Thread Co.	53	Dwight and Walnut	215	Hamilton Street School	623	Appleton and Bond
16	Parsons Paper Co., No. 1	54	Prospect and Maple	216	Norman Paper Co.	711	Linden and Essex
17	Whiting Paper Co., No. 1	56	Elm and Suffolk	217	Sargeant and Summer	712	Sargeant and Locust
18	D. Mackintosh & Sons Co.	61	High Street Engine House	218	Beebe & Holbrook Paper Co.	713	Mt. St. Vincent
19	East Dwight and West	62	Newton and Cabot	221	Appleton and Winter	714	Nonotuck and Fairfield Ave.
21	Appleton and Main	63	Maple and Sargeant	223	Cabot and Canal	715	City Almshouse
22	Main and Spring	64	Appleton and Walnut	224	Merrick Lumber Co.	716	Chas. Hastings
23	Riverside Paper Co., No. 2	65	Dwight and Linden	225	Watson Ely Lumber Co.	717	West Dwight and Appleton
24	Main and Dwight	67	Dwight and Front	226	B. F. Perkins & Son	718	Beacon Ave. and Nonotuck
25	Whiting Paper Co., No. 2	68	Appleton and Oak	231	Merrick Thread Co., No. 2	719	Williams and Lincoln
26	Massasoit Paper Co.	71	Hampden and Pleasant	232	Skinner Silk Mill	721	Laurel Street
27	Farr Alpaca Co., No. 1	72	Hampden and Northampton	233	Bigelow St., near Cabot	722	Allen and Elm
28	Wauregan Paper Co.	73	South and Northampton	251	Geo. W. Prentiss & Co.	723	City Hospital
29	Hampden Glazed Paper Co.	74	Ward Seven Engine House	311	Holyoke Warp Co.	724	Northampton and Clark
31	Main and Sargeant	75	Oak and Hampshire	312	Geo. R. Dickinson Paper Co.	725	Brightside
32	Bridge and Adams	76	Northampton and Cherry	313	Springdale	726	View and Brown Avenue
33	Parsons Paper Co., No. 2	78	Lincoln and Taylor	314	Newton Paper Co.	727	Springfield Road and Peltiah
34	Main and Canal	79	Sargeant and Northampton	315	Farr Alpaca Co., No. 2	728	Laurel and Northampton
35	Holyoke Machine Co.	81	Northampton and Elliott	316	Springfield Blanket Co.	729	Elmwood Engine House
36	Germania Mills	82	Northampton and Fairfield Ave.	317	Holyoke Plush Co.	731	High School Building
37	Chemical Paper Co.	83	Pearl and Highland Ave.	318	Berkshire and Main	732	Sargeant and St. Jerome Ave.
38	Merrick Thread Co., No. 1	84	Pleasant and Harvard	321	Linden Paper Co.	733	Dwight and Parker
39	Holyoke Envelope Co.	85	Fairfield Ave.	322	Holyoke P. Co.	734	O'Connor Ave.
		86	Highlands School	325	Taylor Burt Co.	735	Hampden and School
		91	City Gas House Appleton	611	Maple and Essex	736	Franklin and Locust
		92	Elec. Light Sta.	612	Cabot and Pine	737	Springfield Road

Atlas
Mass
Holyoke
1911
Annex

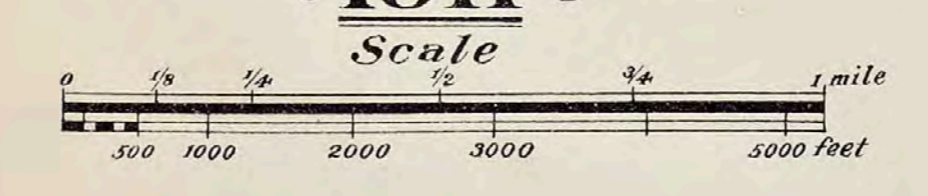


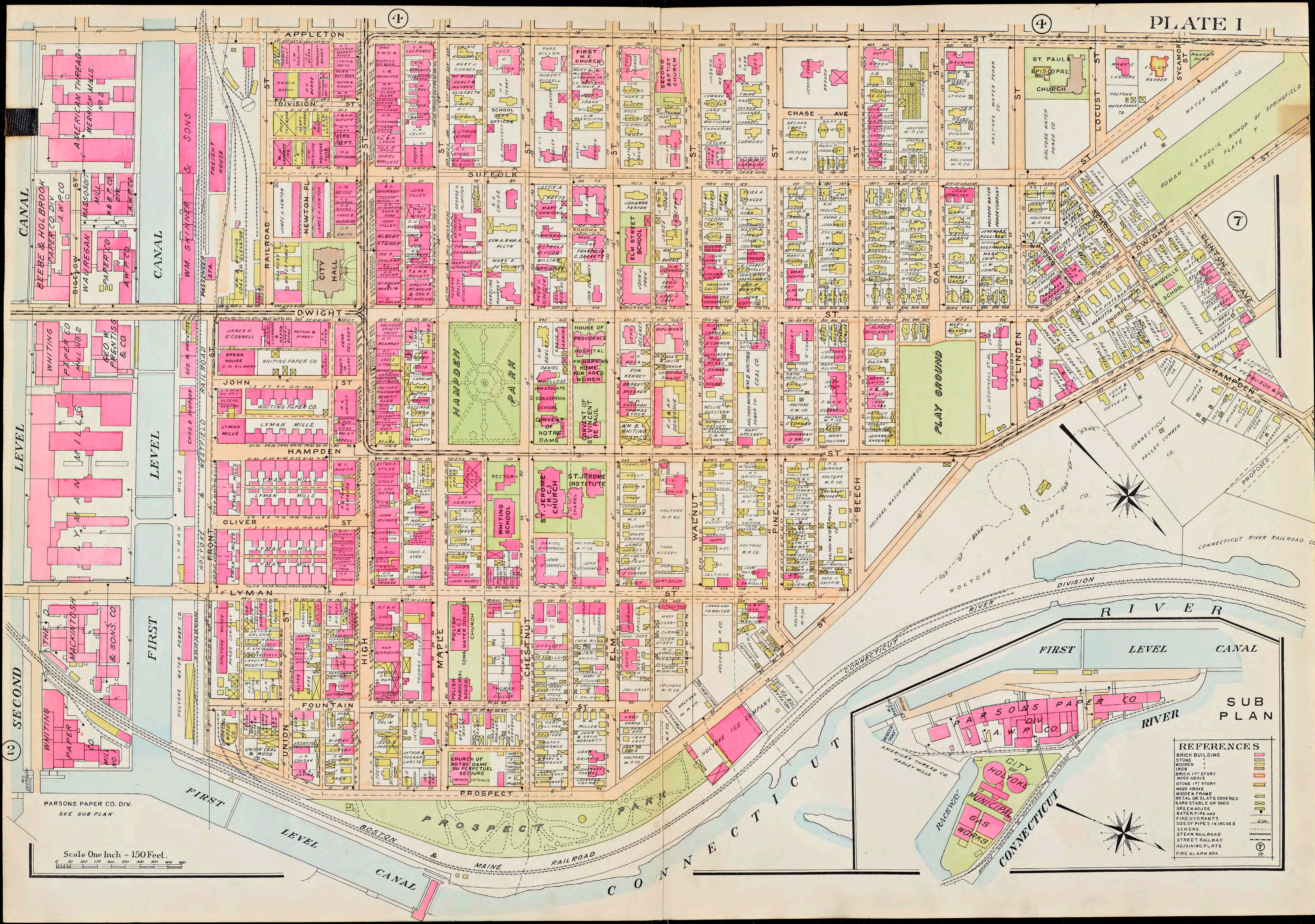
NOTE!
ALL RED
LINES & NUMBERS
SHOW
PLATES
IN THE
ATLAS

REFERENCES

BRICK BUILDING	[Symbol]
STONE	[Symbol]
WOODEN	[Symbol]
IRON	[Symbol]
BRICK 1ST STORY	[Symbol]
WOOD ABOVE	[Symbol]
STONE 1ST STORY	[Symbol]
WOOD ABOVE	[Symbol]
WOODEN FRAME	[Symbol]
METAL OR SLATE COVERED	[Symbol]
BARK STABLE OR SHED	[Symbol]
GREEN HOUSE	[Symbol]
WATER PIPE AND	[Symbol]
FIRE HYDRANTS	[Symbol]
SIZE OF PIPES IN INCHES	[Symbol]
SEWERS	[Symbol]
STEAM RAILROAD	[Symbol]
STREET RAILWAY	[Symbol]
ADJOINING PLATE	[Symbol]
FIRE ALARM BOX	[Symbol]

RICHARDS
STANDARD
MAP
OF THE
CITY OF HOLYOKE
MASSACHUSETTS
1911





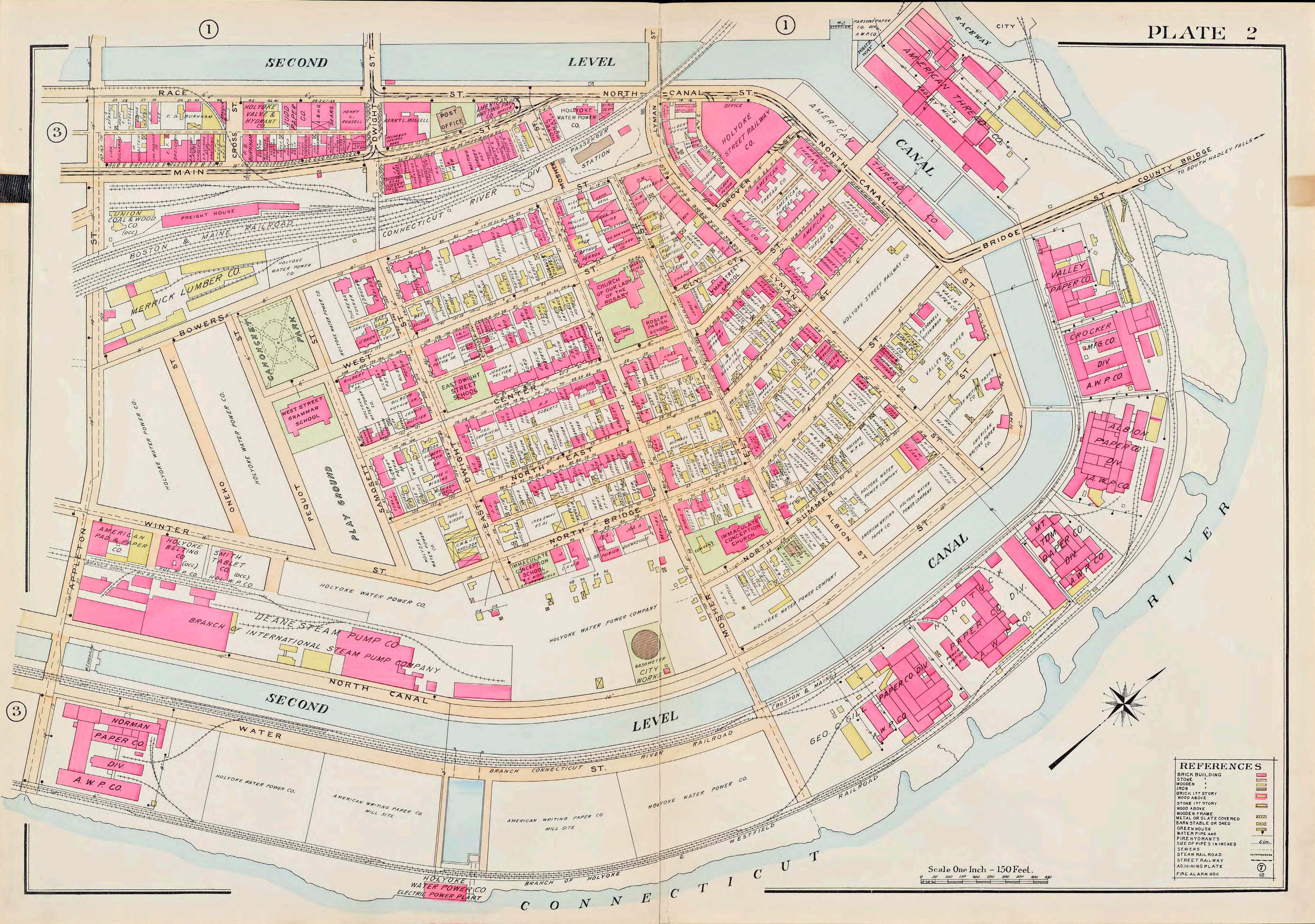
REFERENCES

- BRICK BUILDING
- STONE
- WOODEN
- IRON
- BRICK 1 1/2 STORY
- WOOD ABOVE
- STONE 1 1/2 STORY
- WOOD ABOVE
- WOODEN FRAME
- METAL OR SLATE COVERED
- BARN STABLE OR SHED
- GREEN HOUSE
- WATER PIPE AND
- FIRE HYDRANT'S
- SIZE OF PIPES IN INCHES
- SEWERS
- STEAM RAILROAD
- STREET RAILWAY
- ADJOINING PLATE
- FIRE ALARM BOX

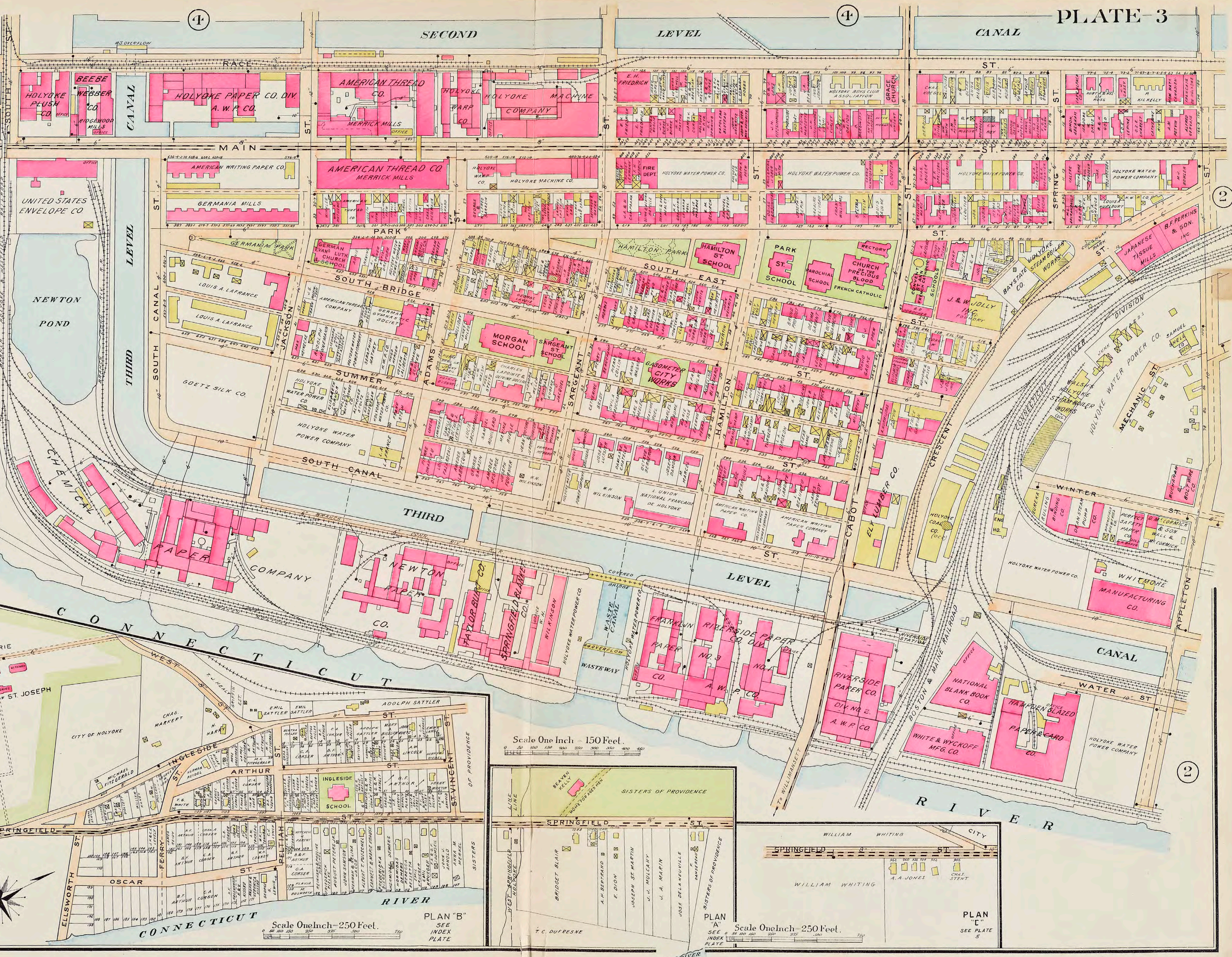
Scale One Inch = 150 Feet.

PARSONS PAPER CO. DIV. SEE SUB PLAN

SUB PLAN



- REFERENCES**
- BRICK BUILDING
 - STONE
 - WOODEN
 - IRON
 - BRICK 1ST STORY
 - WOOD ABOVE
 - STONE 1ST STORY
 - WOOD ABOVE
 - METAL OR SLATE COVERED
 - BARN STABLE OR SHED
 - GREEN HOUSE
 - WATER PIPE AND
 - FIRE HYDRANTS
 - SEWERS
 - SIZE OF PIPE IN INCHES
 - STEAM RAILROAD
 - STREET RAILWAY
 - ADJOINING PLATE
 - FIRE ALARM BOX



Scale One Inch = 150 Feet.

Scale One Inch = 250 Feet.

Scale One Inch = 250 Feet.

PLAN "B"
SEE INDEX
PLATE

PLAN "C"
SEE INDEX
PLATE

CEMETERY
BRIGHTSIDE
SISTERS OF ST. JOSEPH
INSTITUTION
BETHLEHEM

SISTERS OF PROVIDENCE
ELLSWORTH ST.
OSCAR ST.
FERRY ST.
CORSON ST.
SPRINGFIELD ST.

BRIDGET BLAIR
A.M. BERTHARD
E. DION
JOSEPH ST. MARTIN
J. J. MULVARY
U. A. MARIN
JOSE DELANVILLE
SISTERS OF PROVIDENCE
SPRINGFIELD ST.

WILLIAM WHITING
SPRINGFIELD ST.
WILLIAM WHITING
A. A. JONES
CHAS. STENT
CITY

2

5

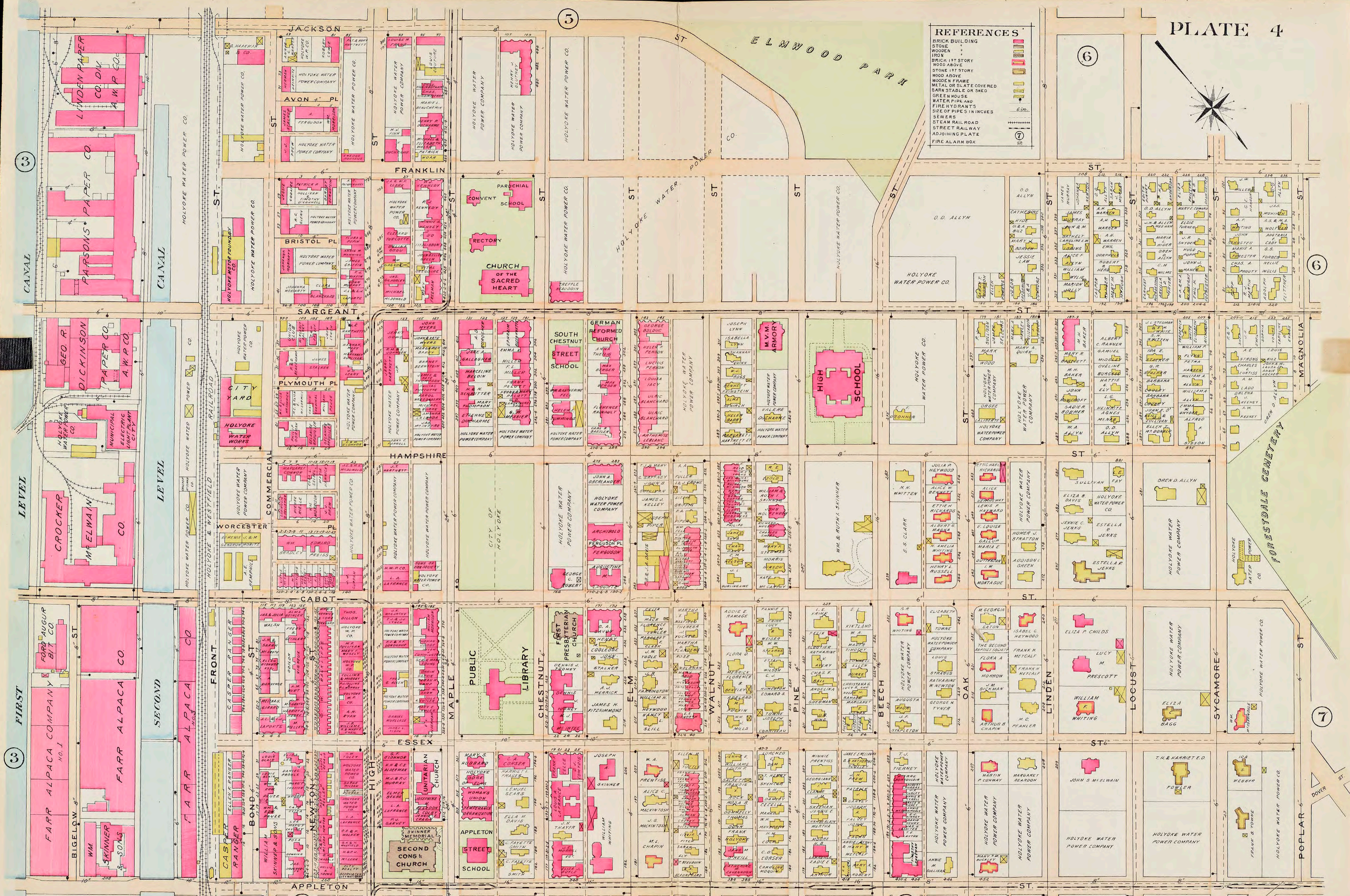
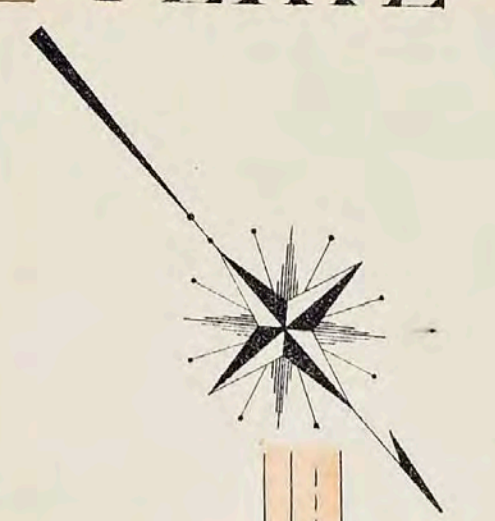
21

4

4

REFERENCES

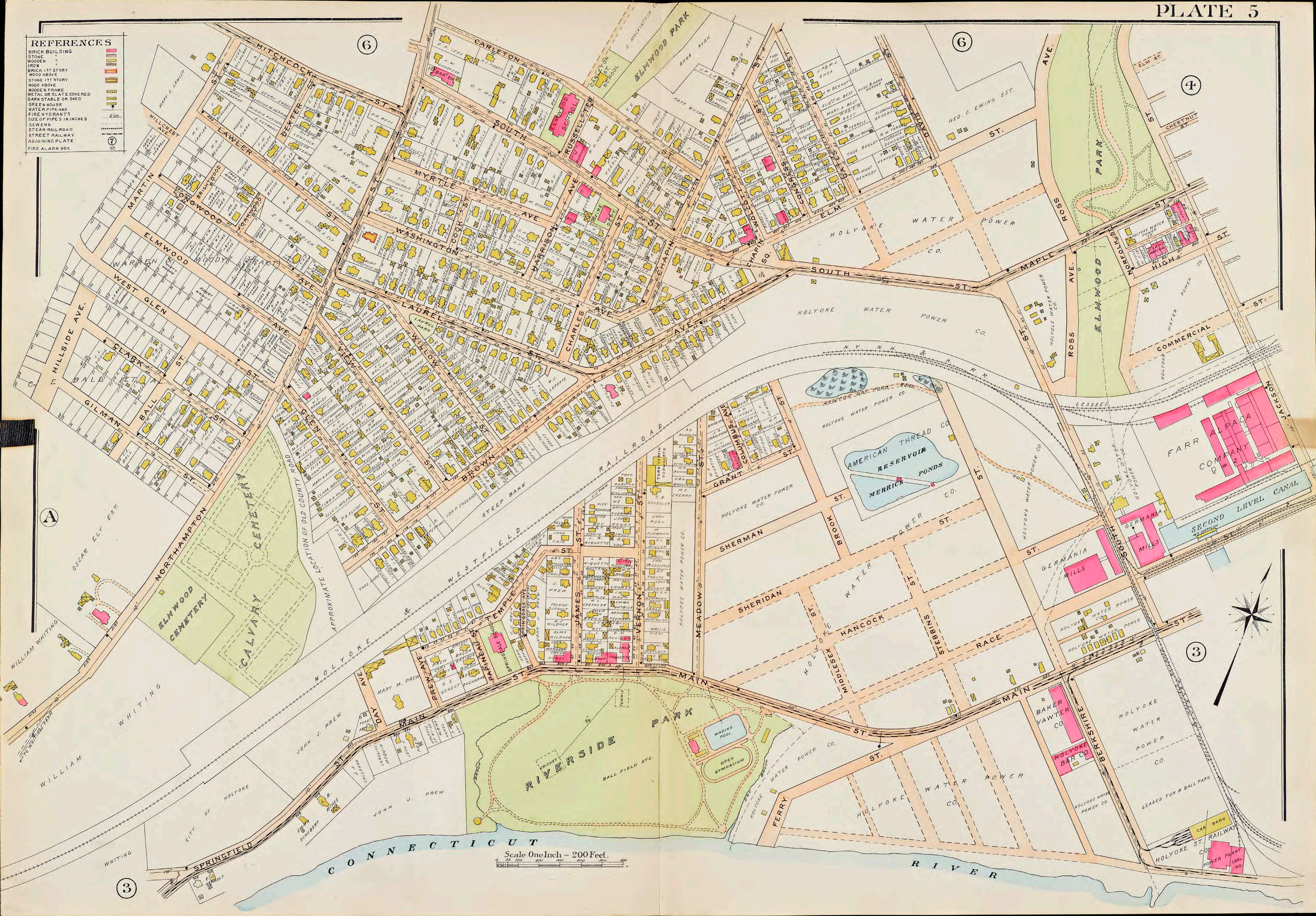
- BRICK BUILDING
- STONE
- WOODEN
- IRON
- BRICK 1ST STORY
- WOOD ABOVE
- STONE 1ST STORY
- WOOD ABOVE
- WOODEN FRAME
- METAL OR SLATE COVERED
- BARN STABLE OR SHED
- GREENHOUSE
- WATER PIPE AND
- FIRE HYDRANTS
- SIZE OF PIPES IN INCHES
- SEWERS
- STEAM RAILROAD
- STREET RAILWAY
- ADJOINING PLATE
- FIRE ALARM BOX



Scale One Inch = 150 Feet.

REFERENCES

BRICK BUILDING	[Pink square]
STONE	[Light blue square]
WOODEN	[Light yellow square]
IRON	[Red square]
BRICK 1ST STORY	[Yellow square]
WOOD ABOVE	[Light yellow square]
STONE 1ST STORY	[Light blue square]
WOOD ABOVE	[Light yellow square]
WOODEN FRAME	[Light yellow square]
METAL OR SLATE COVERED	[Light blue square]
BARN, STABLE OR SHED	[Yellow square]
GREEN HOUSE	[Light green square]
WATER PIPE AND	[Blue line]
FIRE HYDRANT'S	[Yellow circle]
SIZE OF PIPES IN INCHES	[Line with number]
SEWERS	[Dashed line]
STEAM RAILROAD	[Thick black line]
STREET RAILWAY	[Thin black line]
ADJOINING PLATE	[Circle with number]
FIRE ALARM BOX	[Square with 'A']



Scale One Inch - 200 Feet.

3

3

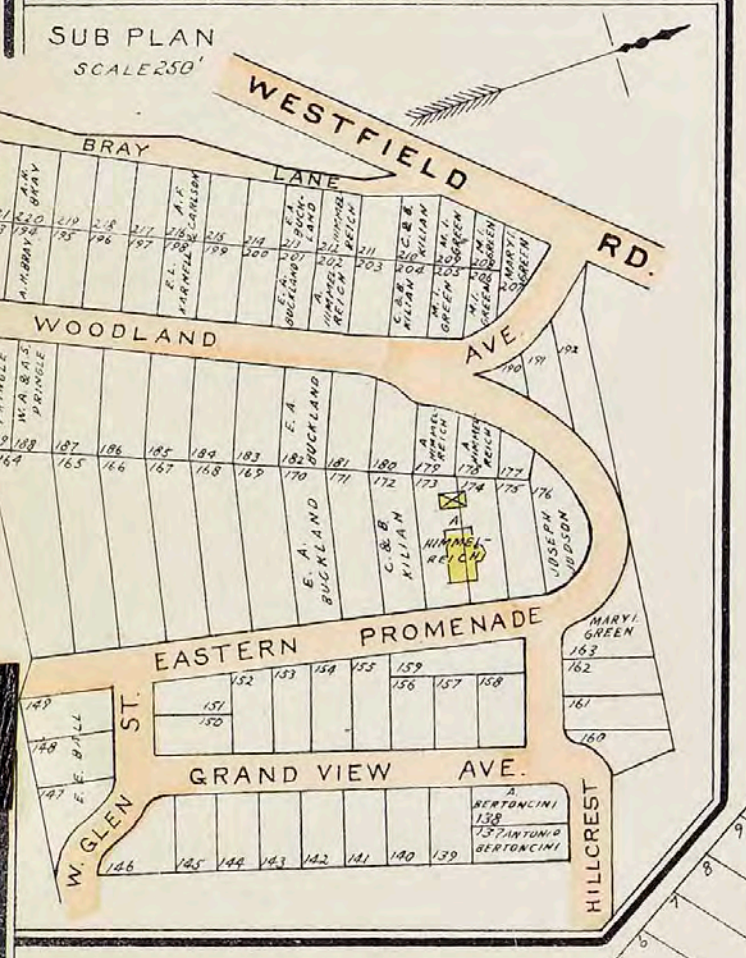
6

6

4

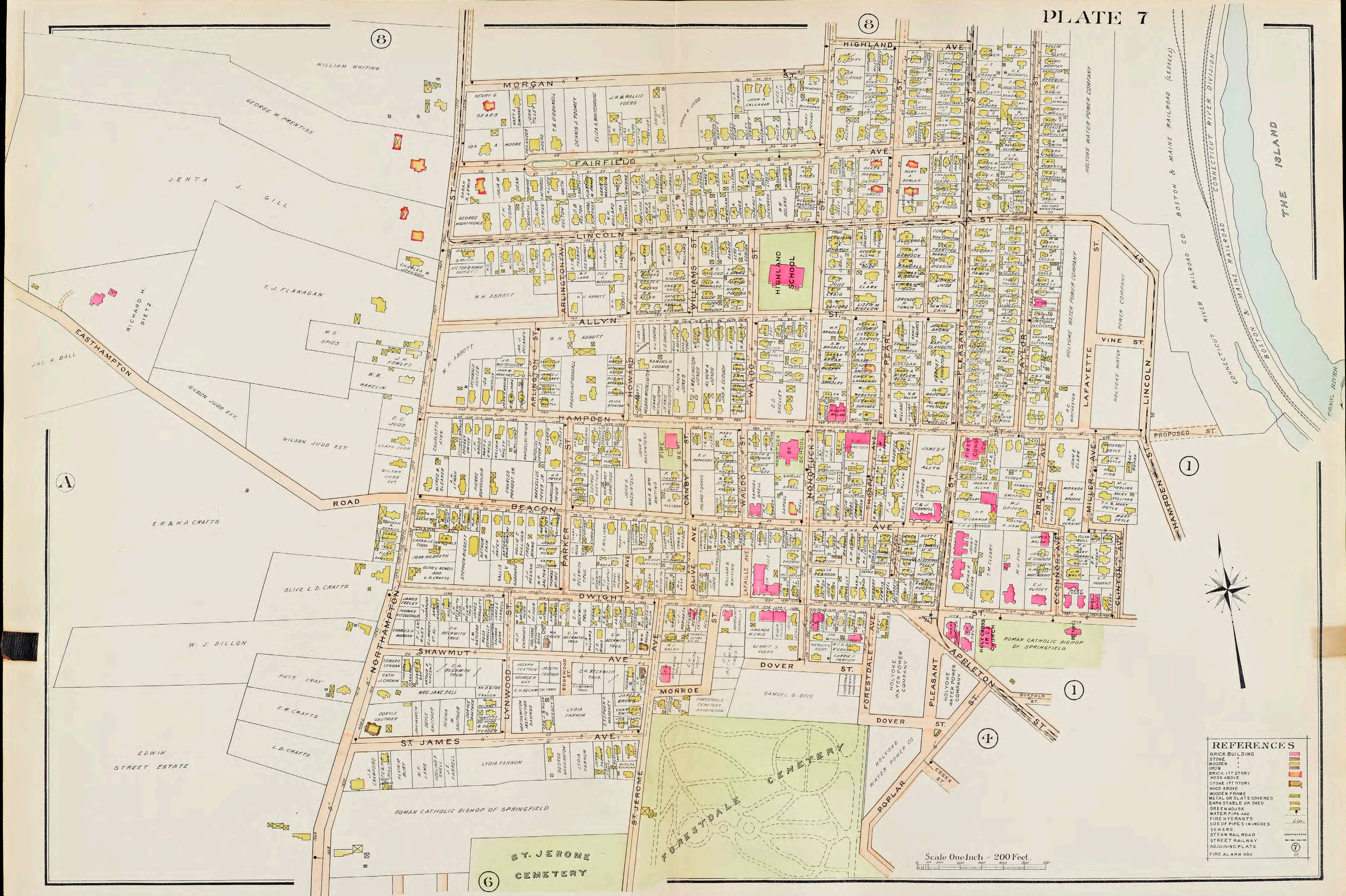
REFERENCES

- BRICK BUILDING
- STONE
- WOODEN
- IRON
- BRICK 1ST STORY
- WOOD ABOVE
- STONE 1ST STORY
- WOOD ABOVE
- WOODEN FRAME
- METAL OR SLATE COVERED
- BARN STABLE OR SHED
- GREEN HOUSE
- WATER PIPE AND
- FIRE HYDRANTS
- SEWERS
- STEAM RAILROAD
- STREET RAILWAY
- ADJOINING PLATE
- FIRE ALARM BOX



Scale One Inch = 200 Feet.





REFERENCES

[Symbol]	BRICK BUILDING
[Symbol]	STONE
[Symbol]	WOODEN
[Symbol]	IRON
[Symbol]	BRICK 1ST STORY
[Symbol]	WOOD ABOVE
[Symbol]	STONE 1ST STORY
[Symbol]	WOOD ABOVE
[Symbol]	WOODEN FRAME
[Symbol]	METAL OR SLATE COVERED
[Symbol]	BARN STABLE OR SHED
[Symbol]	GREEN HOUSE
[Symbol]	WATER PIPE AND FIRE HYDRANTS
[Symbol]	SIZE OF PIPES INCHES
[Symbol]	SEWERS
[Symbol]	STEAM RAIL ROAD
[Symbol]	STREET RAILWAY
[Symbol]	ADJOINING PLATE
[Symbol]	FIRE ALARM BOX

Scale One Inch = 200 Feet.

8

3

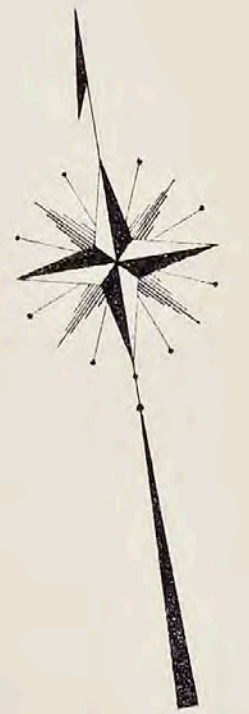
1

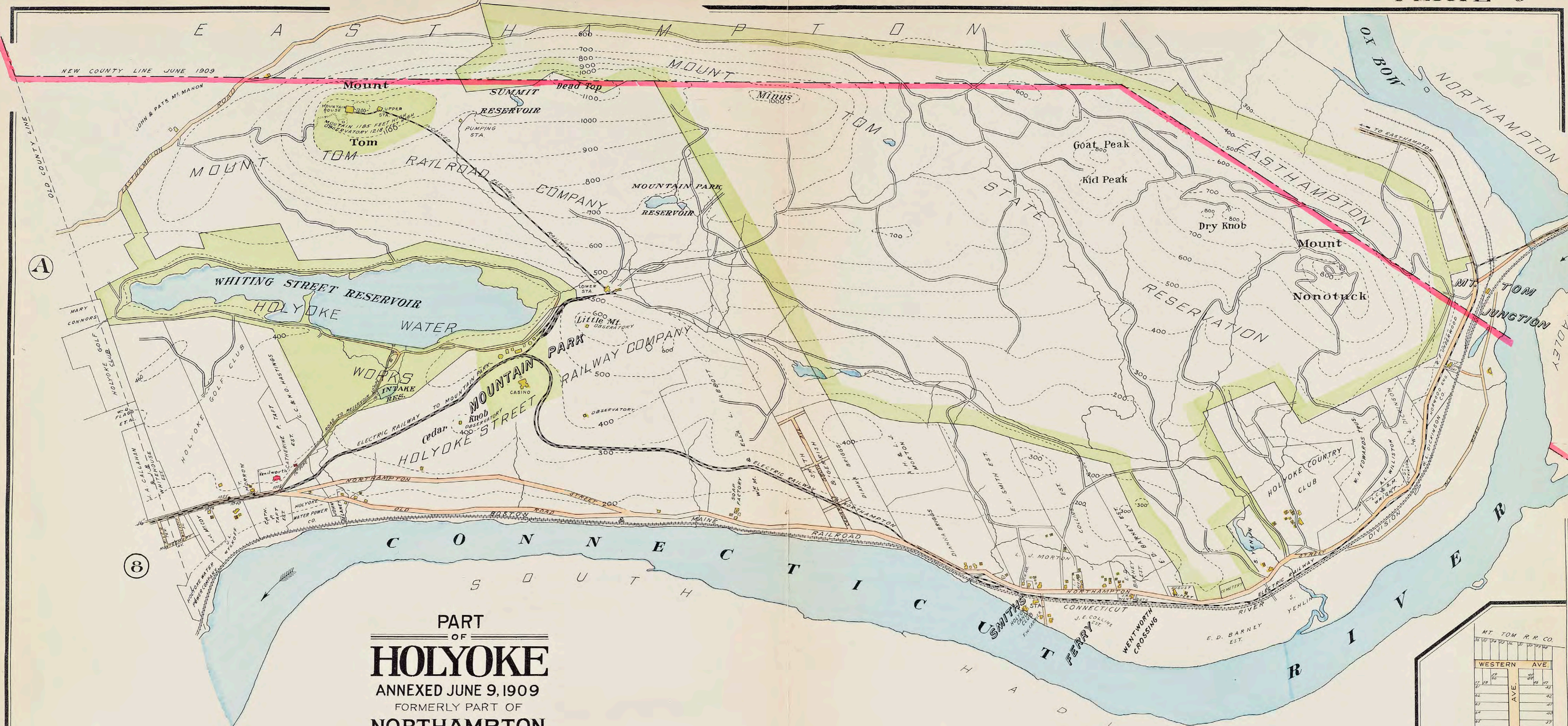
1

4

6

A





PART
OF
HOLYOKE
ANNEXED JUNE 9, 1909
FORMERLY PART OF
NORTHAMPTON
SCALE OF FEET

0 500 1000 1500 2000 2500

REFERENCES

BRICK BUILDING	
STONE	
WOODEN	
IRON	
BRICK 1ST STORY	
WOOD ABOVE	
STONE 1ST STORY	
WOOD ABOVE	
WOODEN FRAME	
METAL OR SLATE COVERED	
BARN, STABLE OR SHED	
GREENHOUSE	
WATER PIPE AND	
FIRE HYDRANTS	
SIZE OF PIPES IN INCHES	
SEWERS	
STEAM RAILROAD	
STREET RAILWAY	
ADJOINING PLATE	
FIRE ALARM BOX	

