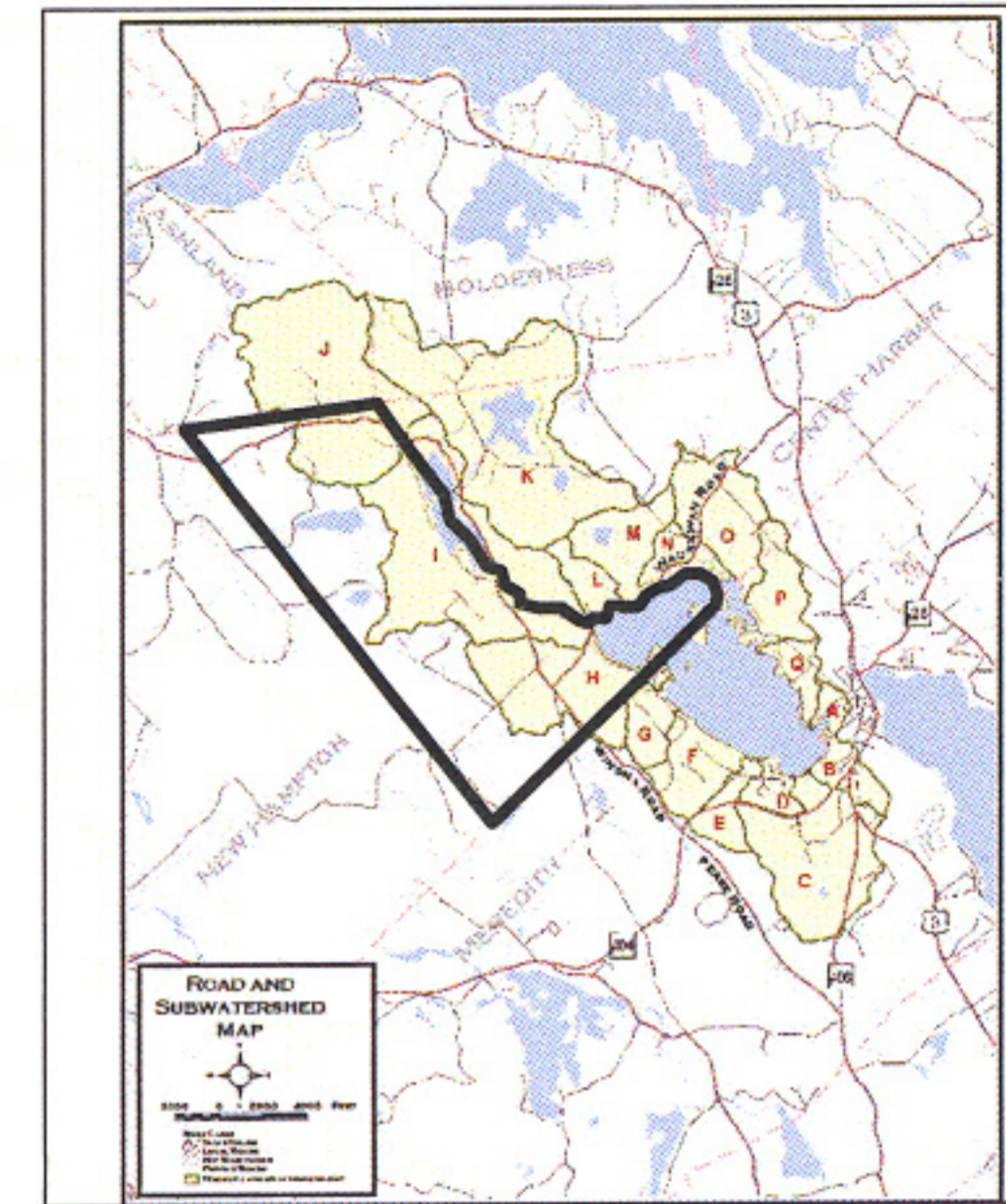
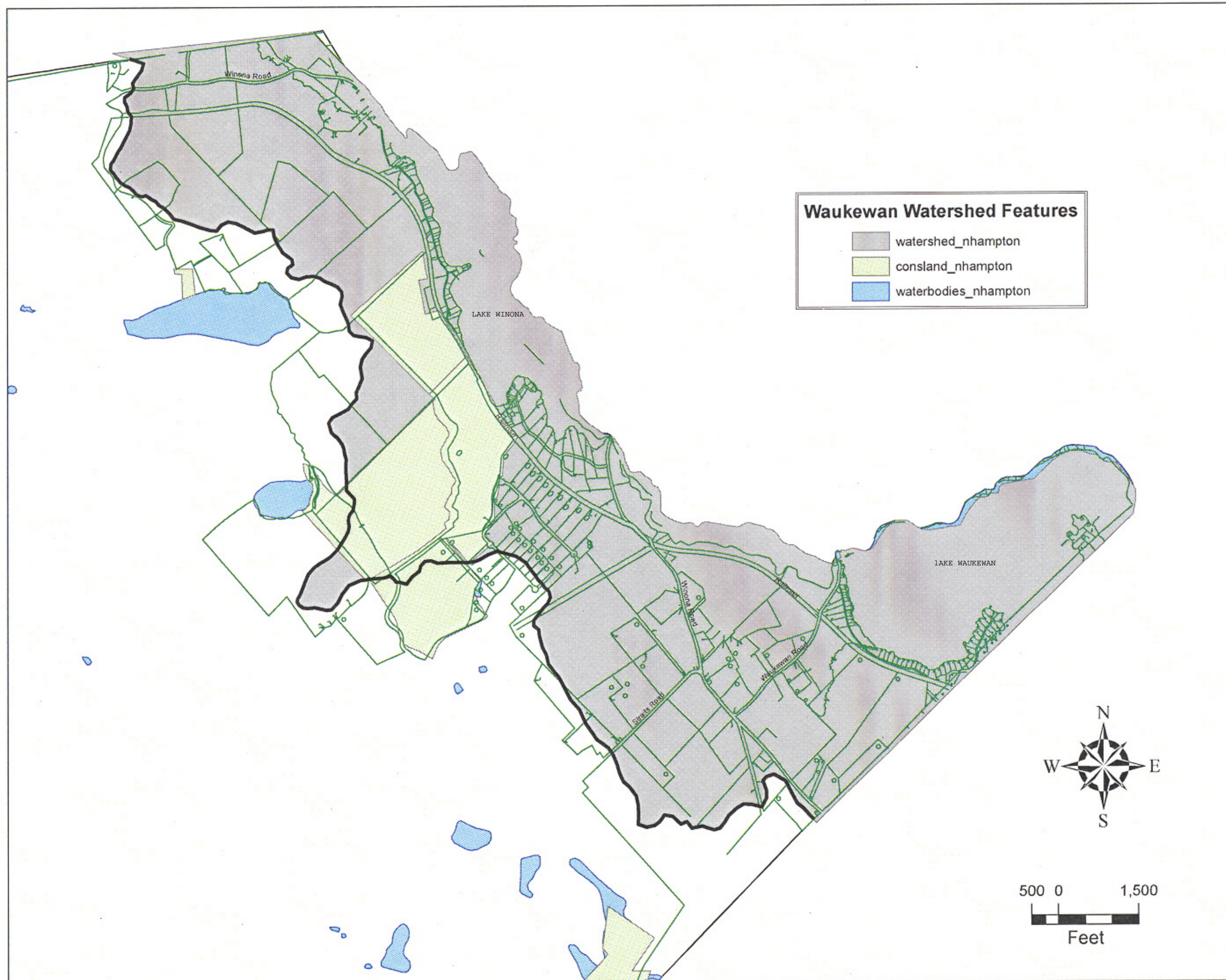


DRAFT - Waukewan Watershed Overlay District - New Hampton, NH



This draft document is based on the Waukewan Watershed Overlay District maps contained within the Management Plan for the Waukewan Watershed that was prepared by the Waukewan Watershed Advisory Committee in June 2005. The New Hampton parcel data represented in this overlay was acquired in 2004 and may not reflect current parcel boundaries. This document is a draft version to be used accordingly.

The Waukewan Watershed spans 8,275 acres or 12.93 square miles and includes portions of Belknap and Grafton counties, and portions of the five towns of Ashland, Center Harbor, Holderness, Meredith and New Hampton. New Hampton occupies 1949 acres or 23.6% of the watershed area.