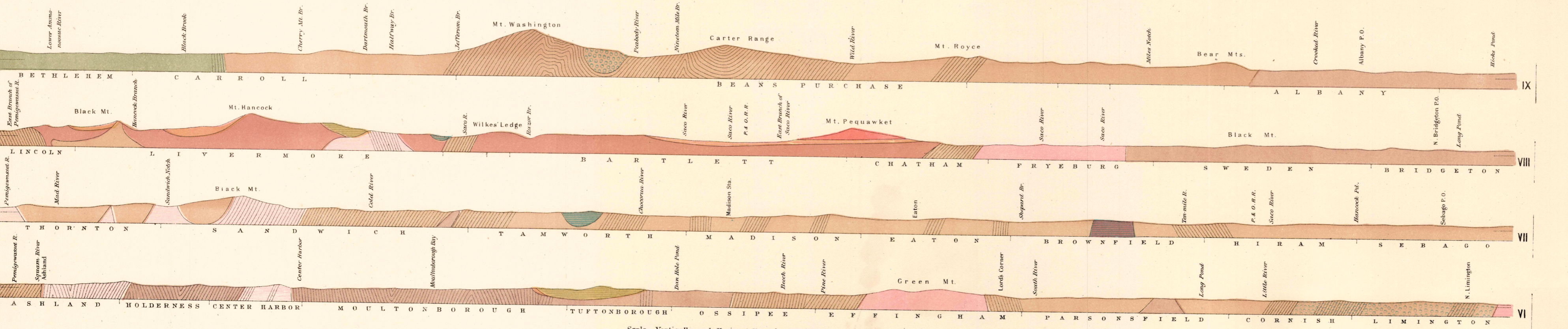


- STRATIFIED.**
- Modified Drift
 - Kearage Andalusite Group
 - Gale Mica Schist
 - Rockingham Mica Schist
 - Cambrian Slates
 - Lyman Group
 - Lisbon Group
 - Ladlow Group
 - Francis Breccia
 - Mountain Group
 - Concord Granite
 - Lake Winnepesaukee Gneiss
 - Bethlehem Gneiss
 - Bands of Quartz
 - Porphyritic Gneiss
- ERUPTIVE.**
- Conway Granite
 - Albany Granite
 - Thorsness Group
 - Porphyry
 - Popowick Breccia
 - Porphyry and Diabase
 - Silicate of Mt. Canstock
 - Granite



Scale. Vertically and Horizontally, 24 miles to an inch.
Short dotted lines indicate Sea level. Base 850 ft. below Sea.