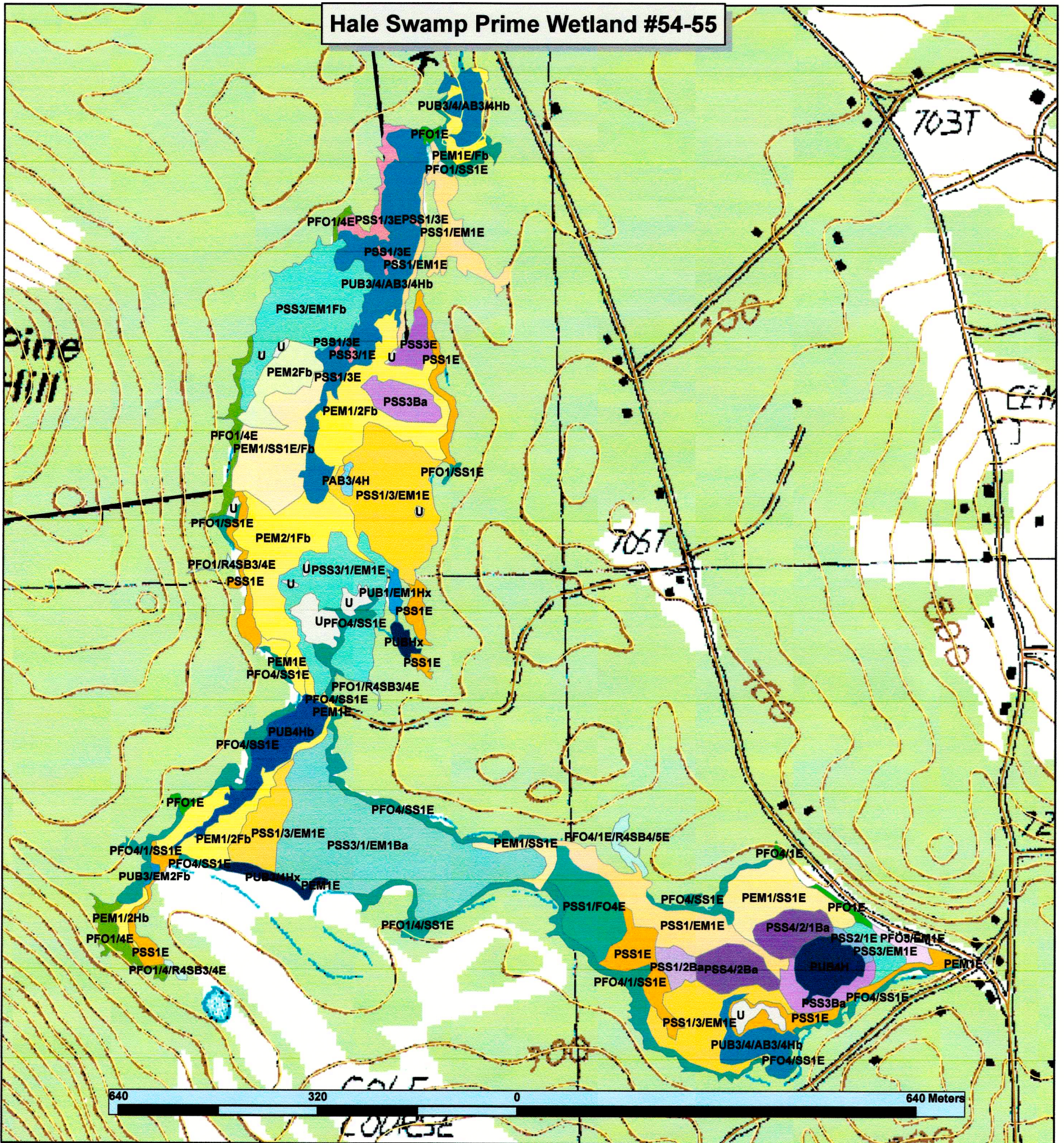


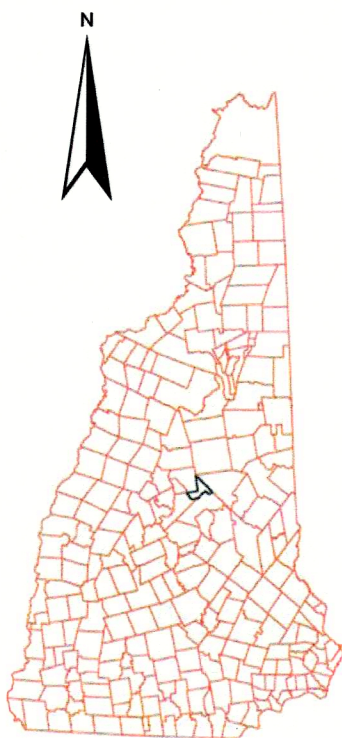
CENTER HARBOR PRIME WETLANDS MAPPING PROJECT

Hale Swamp Prime Wetland #54-55



Legend

Roads	PSS1/3/EM1E
Hale Swamp Prime Wetland Cover Types	PSS1/3E
NWICODE	PSS1/EM1E
PAB3/4H	PSS1/FO4E
PEM1/2Fb	PSS1E
PEM1/2Hb	PSS2/1E
PEM1/SS1E	PSS3/1/EM1Ba
PEM1/SS1E/Fb	PSS3/1/EM1E
PEM1E	PSS3/1E
PEM1E/Fb	PSS3/EM1E
PEM2/1Fb	PSS3/EM1Fb
PEM2Fb	PSS3Ba
PFO1/4/R4SB3/4E	PSS3E
PFO1/4/SS1E	PSS4/2/1Ba
PFO1/4E	PSS4/2Ba
PFO1/4/R4SB3/4E	PUB1/EM1Hx
PFO1/SS1E	PUB3/4/AB3/4Hb
PFO1E	PUB3/4Hx
PFO4/1/SS1E	PUB3/EM2Fb
PFO4/SS1E	PUB4H
PFO4/1E	PUB4Hb
PFO4/1E/R4SB4/5E	PUBHx
PFO4/SS1E	U
PFO5/EM1E	Town Boundary
PSS1/2Ba	



About This Map

This map was created from NH GRANIT data sources, including 1987 USGS topographic maps, plus the 2006 1-foot color aerial photographs. Parcel lines were derived from SLCS data and are for reference purposes only. Cover types were derived from field inspection of wetland boundaries, which entailed a field delineation of the perimeter using a Garmin 12XL GPS unit with an average precision of 3.2 - 6.2 m. Cover types are based on the NWI Cowardin System of Wetland Classification and were adjusted for field-verified data.

Van de Poll, EMC 3/2009



January, 2002

DATE SOURCES - Maps presented in this NRI project are based on stock Geographic Information System (GIS) data maintained and distributed by Complex Systems Research Center (CRSC) at the University of New Hampshire. The New Hampshire Geographically Referenced Analysis and Information Transfer (NH GRANIT) database is a cooperative project that creates, updates and distributes statewide geographic information to individuals, municipalities and agencies on a request basis. The NH GRANIT database can be accessed on-line at <http://www.granit.st.unh.edu/>

GIS DISCLAIMER - Ecosystem Management Consultants (EMC) recognizes the inherent limitations to precise positioning of GIS data as supplied by Complex Systems Research Center or any other related public agency. It also recognizes the limitations of satellite (lansat) and other remotely-derived data in terms of on-the-ground precision. Any information contained within the written, tabular, or spatial aspects of this NRI is not intended to act as survey-worthy, benchmark data that can be used in any legal way. Like CSRC, EMC is not responsible for, nor takes any liability for any misrepresentations, legal or otherwise, that may arise from the inaccuracy of this data.