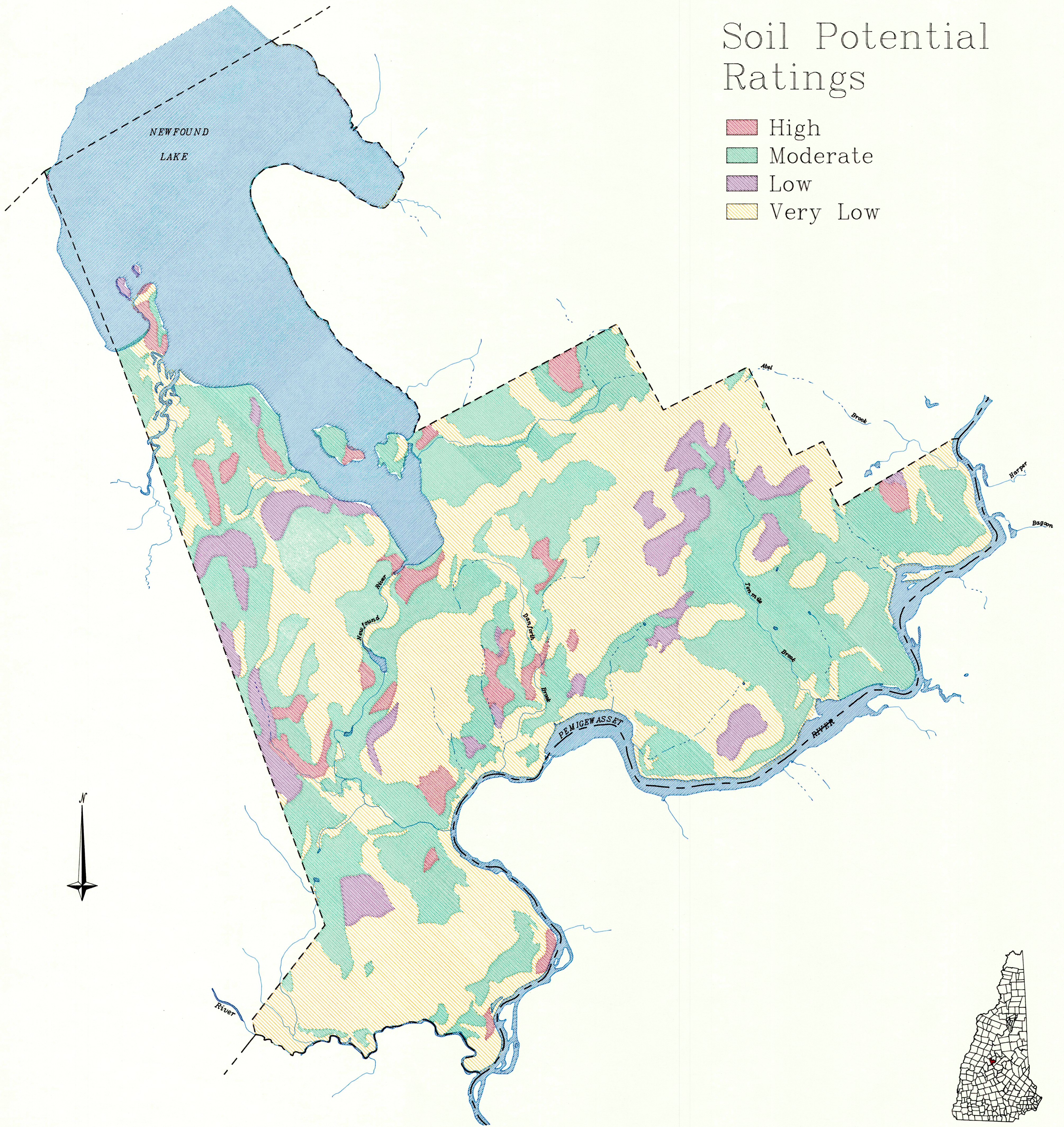


Soil Potential Ratings

- High
- Moderate
- Low
- Very Low



DEVELOPMENT POTENTIAL BRISTOL, NH

THIS MAP WAS CREATED BY THE LAKES REGION PLANNING COMMISSION,
103 MAIN STREET, SUITE 3, MEREDITH, NH 03253.

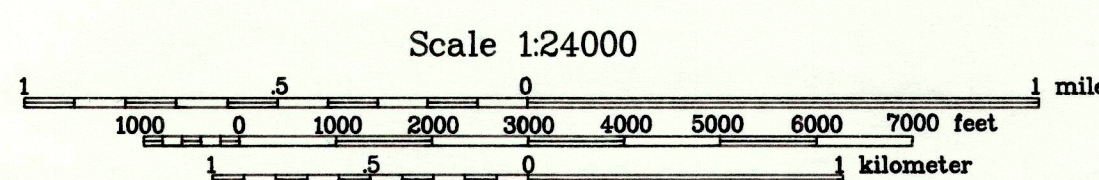
THE SOILS DATA WAS DERIVED FROM THE NATIONAL SOIL SURVEY
DIGITIZED AT NH GRANIT, COMPLEX SYSTEMS RESEARCH CENTER, UNH,
DURHAM, NH. THE DATA IS PROVIDED BY AND MAINTAINED BY GRANIT.

THE BASE MAP DATA WAS DERIVED FROM THE USGS 7.5 MINUTE SERIES QUADRANGLE
MAPS. THIS DATA IS STORED AT AND DISTRIBUTED BY NH GRANIT, COMPLEX SYSTEMS
RESEARCH CENTER, UNH, DURHAM, NH.

SOIL POTENTIAL RATINGS CLASSES is a system of land evaluation that indicates
the relative quality of a soil for development potential compared with the
other soils of Grafton County. The system was developed by the USDA SCS.

DISCLAIMER: The soils data is a pre-certified SOIL GEOGRAPHIC DATABASE
(SSURGO), mapped by the USDA, Soil Conservation Service, Durham, NH.
Delineations depict the dominant soil(s) making up the landscape. Inclusions
of other soils, too small to be delineated, are present within a delineation.
The depicted soil boundaries and interpretations derived from them do not
eliminate the need for on-site sampling, testing, and detailed study of specific
sites for intensive uses. Thus, this map and its interpretations are intended for
planning purposes only. Digital data files are periodically updated. Files
are dated and users are responsible for obtaining the latest version of the
data. For technical information contact either the Lakes Region Planning
Commission, Meredith, NH, or the State Soil Scientist, SCS, Durham, NH.

This map and its interpretations are intended for planning purposes only.



Rating	Acres	% Total
H	459	3.3%
M	4,651	33.2%
L	768	5.5%
VL	4,921	35.1%

LRPC
geographic information system

November, 1994