

Natural Resources: Hill, NH

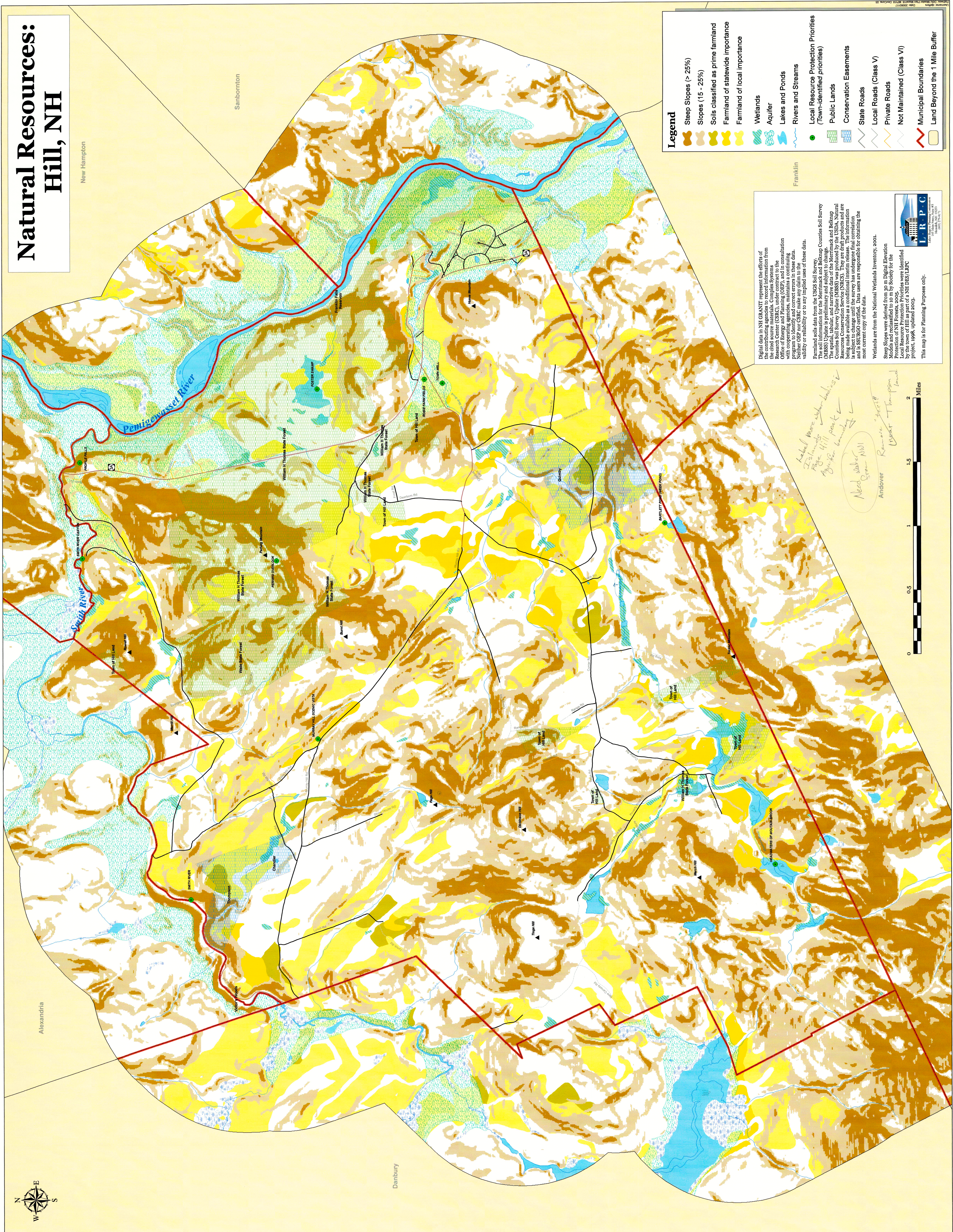
New Hampton

Sanbornton

Franklin

Alexandria

Danbury



Legend

- Steep Slopes (> 25%)
- Slopes (15 - 25%)
- Soils classified as prime farmland
- Farmland of statewide importance
- Farmland of local importance
- Wetlands
- Aquifer
- Lakes and Ponds
- Rivers and Streams
- Local Resource Protection Priorities (Town-identified priorities)
- Public Lands
- Conservation Easements
- State Roads
- Local Roads (Class V)
- Private Roads
- Not Maintained (Class VI)
- Municipal Boundaries
- Land Beyond the 1 Mile Buffer

Digital data in NH GRANIT represent the efforts of the contributing agencies to record information from the cited source materials. Complete Systems Research Center (CSRC), under contract to the Department of Transportation, maintains a continuing program to identify and correct errors in these data. CSRC makes no warranty as to the accuracy, reliability or timeliness of the data.

Farmland soils data from the USGS Soil Survey were derived from the Merrimack and Belknap Counties Soil Survey Update (MSSU) and the Merrimack and Belknap Counties Soil Survey Update (MBSU). The spatial, tabular, and narrative data of the MSSU, MBSU, and the National Wetlands Inventory (NWI) were identified by the town of Hill as part of NH DSS/LARV project, 1998, updated 2003.

This map is for Planning Purposes only.



*Label more water bodies
Fishways
Page 4111 peak
Aggr. boundary
Need water NW
Gran NW*

Andover Remove road
Near Thompson land

