

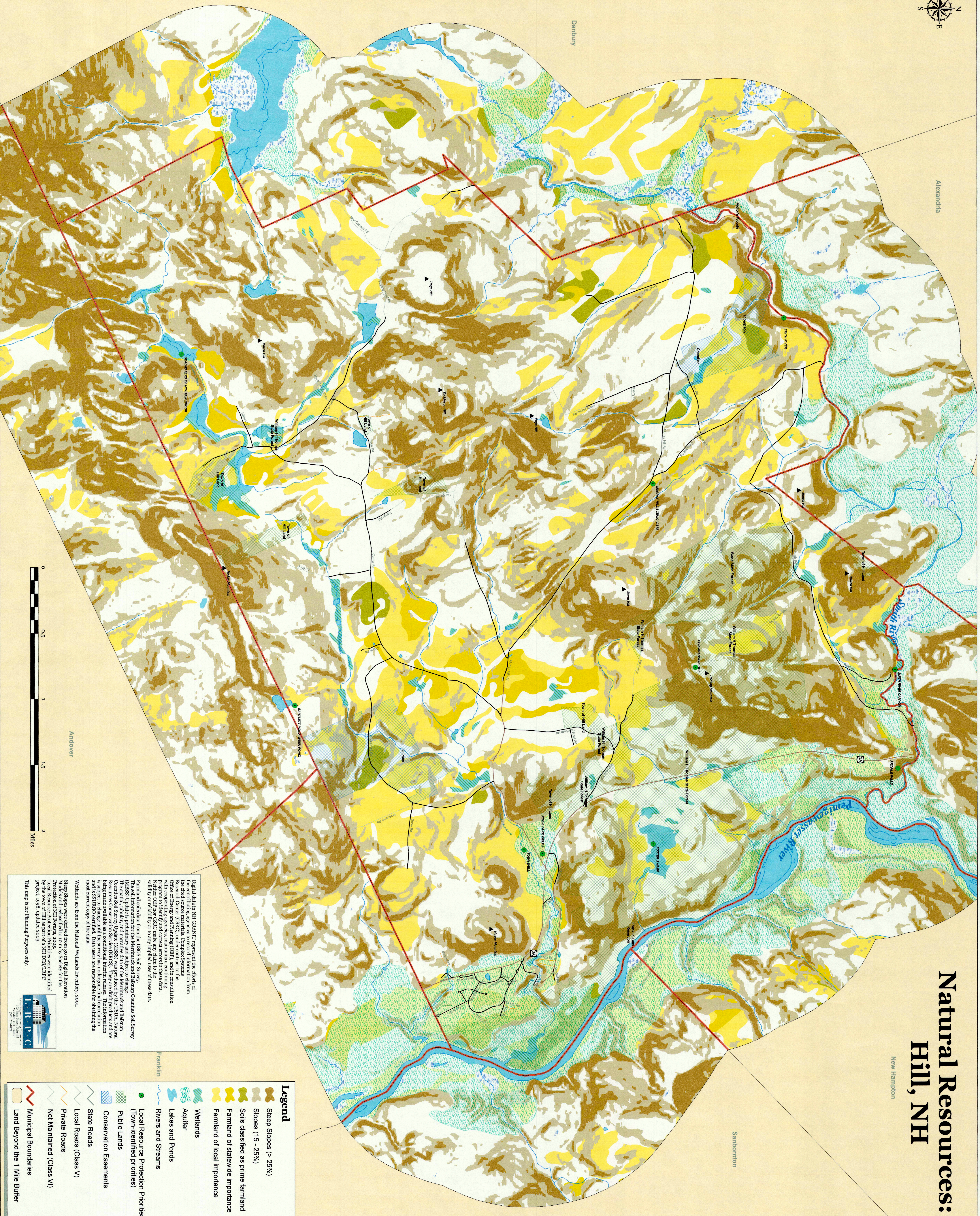
Alexandria

Natural Resources: Hill, NH

New Hampton

Sanbornton

Danbury



Andover

Franklin

Digital data in NH GRANIT represent the efforts of the contributing agencies to record information from the cited source materials. Complex Systems Inc. is the primary contractor for the data. The Office of Energy and Planning (OEP), and in consultation with cooperating agencies, maintains a continuing program to identify and correct errors in these data. The information is provided as a service to the public and is not intended for use in any application where accuracy, reliability, or validity is required.

Farmhand soils data from the USGS Soil Survey, National Cooperative Soil Survey, are preliminary and subject to change. The spatial, tabular, and narrative data of the Merrimack and Belknap Counties Soil Survey Update (MBSU) was produced by the USDA, Natural Resources Conservation Service (NRCS), in cooperation with the State of New Hampshire. The information is provided as a service to the public and is not intended for use in any application where accuracy, reliability, or validity is required.

Wetlands are from the National Wetlands Inventory, 2000. Slope data were derived from 30 m Digital Elevation Models and reclassified to 10 m by Sotchi for the Local Resource Protection Priorities project, 2005.

Local Resource Protection Priorities were identified from the NH 1987 LRPV project, 1998, updated 2003.

This map is for planning purposes only.



- Legend**
- Steep Slopes (> 25%)
 - Slopes (15 - 25%)
 - Soils classified as prime farmland
 - Farmland of statewide importance
 - Farmland of local importance
 - Wetlands
 - Aquifer
 - Lakes and Ponds
 - Rivers and Streams
 - Local Resource Protection Priorities (Town-identified priorities)
 - Public Lands
 - Conservation Easements
 - State Roads
 - Local Roads (Class V)
 - Private Roads
 - Not Maintained (Class VI)
 - Municipal Boundaries
 - Land Beyond the 1 Mile Buffer