



Alexandria

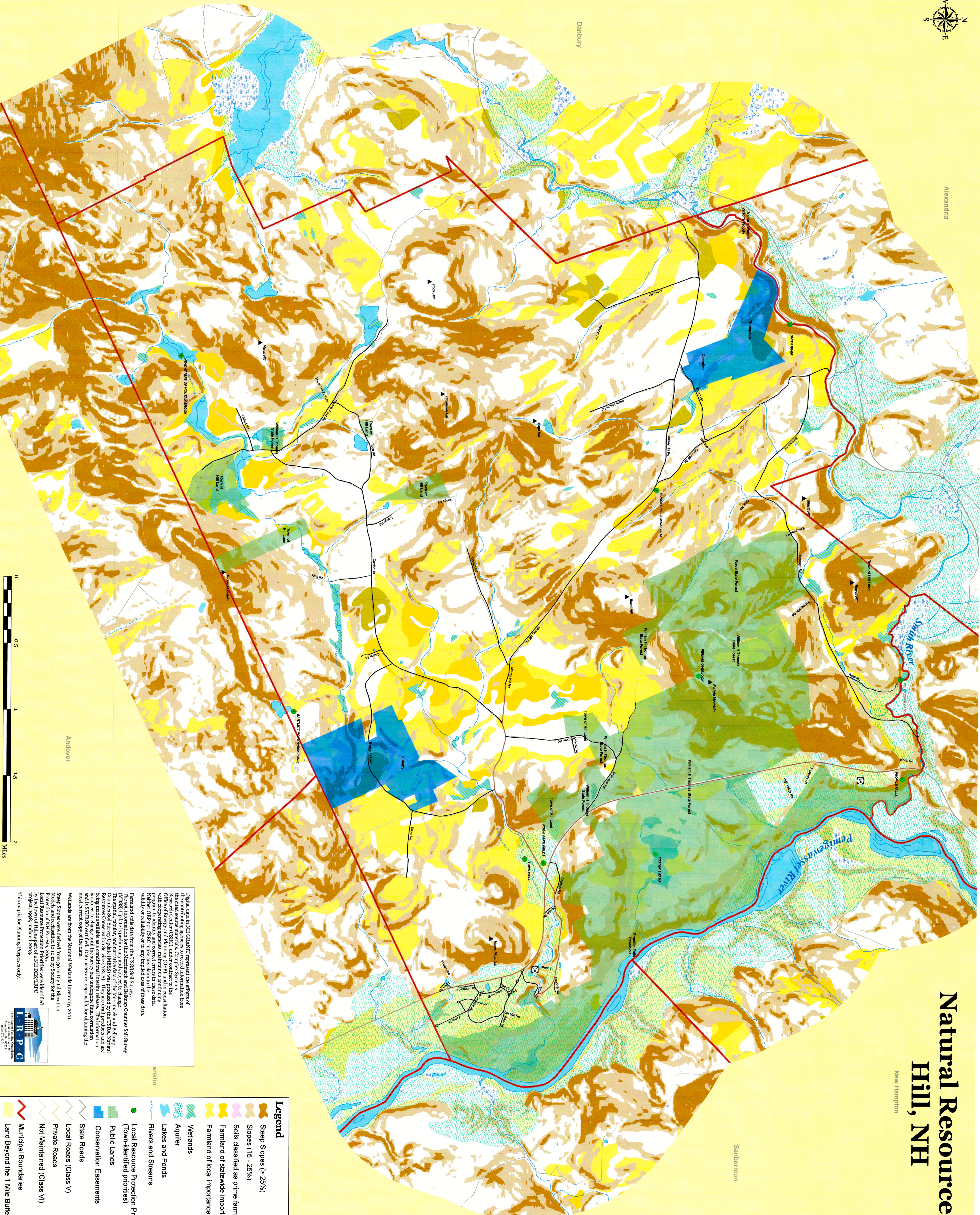
Natural Resources:

Hill, NH

New Hampton

Sanbornton

Danbury

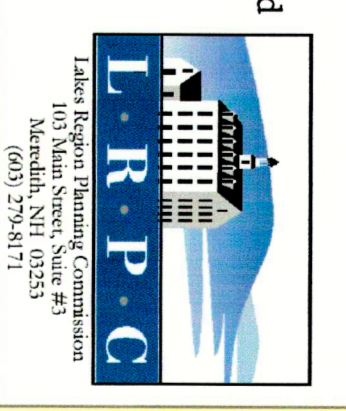


Digital data in NH GRANIT represent the efforts of the contributing agencies to record information from the old source materials. Complex Systems, Inc., Office of Energy and Planning (OEP) and its consultation with cooperating agencies, maintains a continuing program to identify and correct errors in these data. Accuracy of these data is not guaranteed.

Perennial data from the USGS Soil Survey, National Wetlands Inventory, and National Wetlands Inventory (NWI) are preliminary and subject to change. The spatial, tabular, and narrative data of the Marmont and Boland Counties Soil Survey (Update MSSS) was produced by the USDA, National Wetlands Inventory (NWI) and National Wetlands Inventory (NWI) being made available as a conditional interim release. The information is subject to change until the survey has undergone final correlation and a SWRCAO certified. Data users are responsible for obtaining the most current copy of the data.

Wetlands are from the National Wetlands Inventory, 2000. Slope Slopes were derived from 30 m Digital Elevation Models and reclassified to 10 m by Society for the Protection of NH Forests, 2005. The data were identified by the town of Hill as part of a NH DSR/LRDC project, 1998, updated 2003.

This map is for Planning Purposes only.



Legend

- Steep Slopes (> 25%)
- Slopes (15 - 25%)
- Soils classified as prime farmland
- Farmland of statewide importance
- Farmland of local importance
- Wetlands
- Aquifer
- Lakes and Ponds
- Rivers and Streams
- Local Resource Protection Priorities (Town-identified priorities)
- Public Lands
- Conservation Easements
- State Roads
- Local Roads (Class V)
- Private Roads
- Not Maintained (Class VI)
- Municipal Boundaries
- Land Beyond the 1 Mile Buffer