








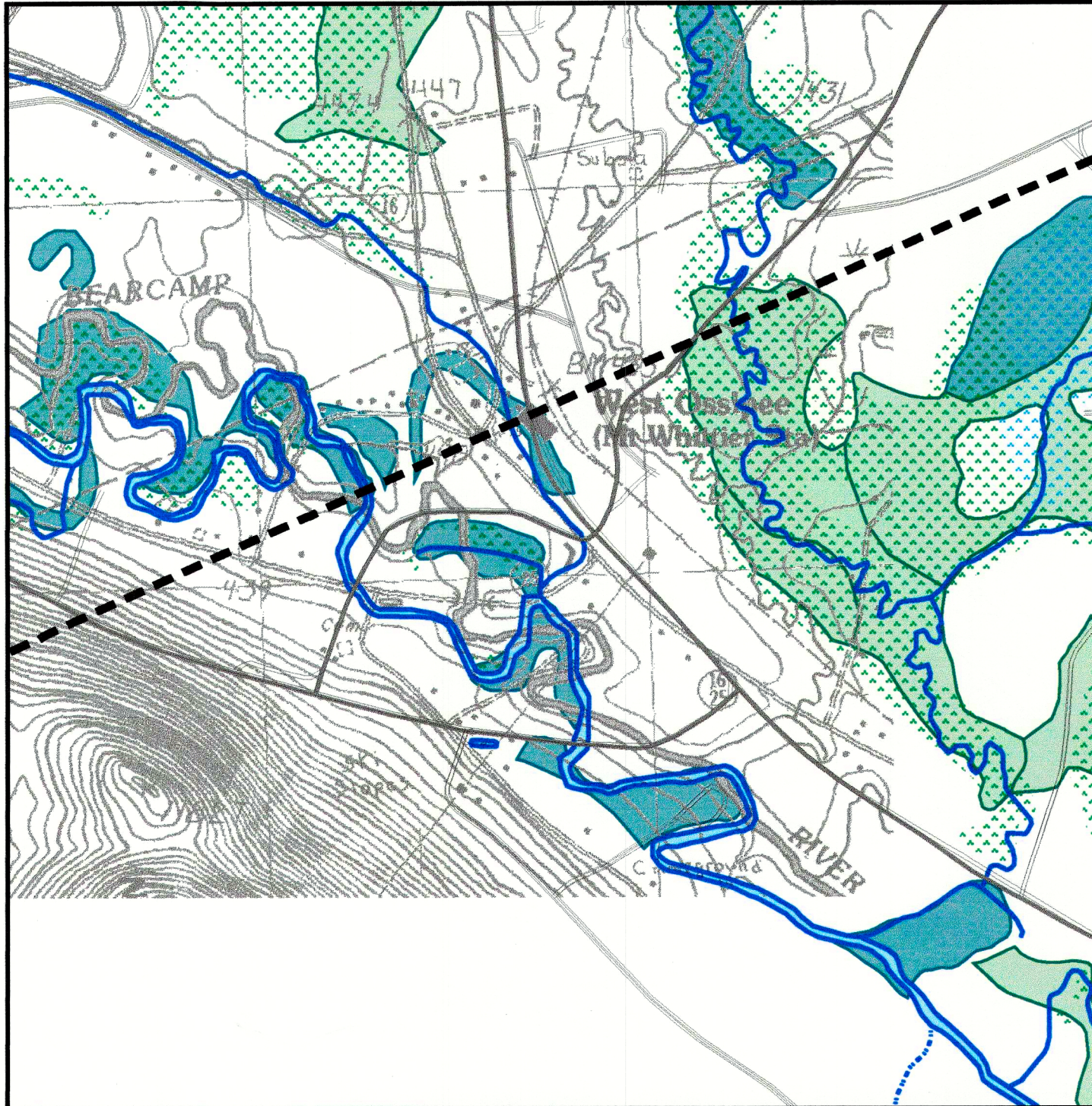


## WEST OSSISPEE Hydric Soils

-  Town boundary
-  Roads
-  Stream or Shoreline
-  Intermittent Stream
-  Lake, Pond, River
-  Wetland (USGS)
-  Wetland (NWI)
-  Hydric A soils
-  Hydric B soils



Base map data (all) provided by GRANIT at Complex Systems Research Center, UNH.

NOTE: This map has been printed at a scale larger than the original source data was intended. Accuracy of feature locations has been reduced as a result. Use for general planning purposes only.

The coverages presented in this program are under constant revision as new sites or facilities are added. They may not contain all of the potential or existing sites or facilities. The Department is not responsible for the use or interpretation of this information, nor for any inaccuracies.

Map Prepared January 28, 2002.



0.1 0 0.1 Miles

1000 0 1000 Feet