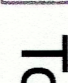

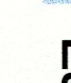
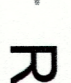
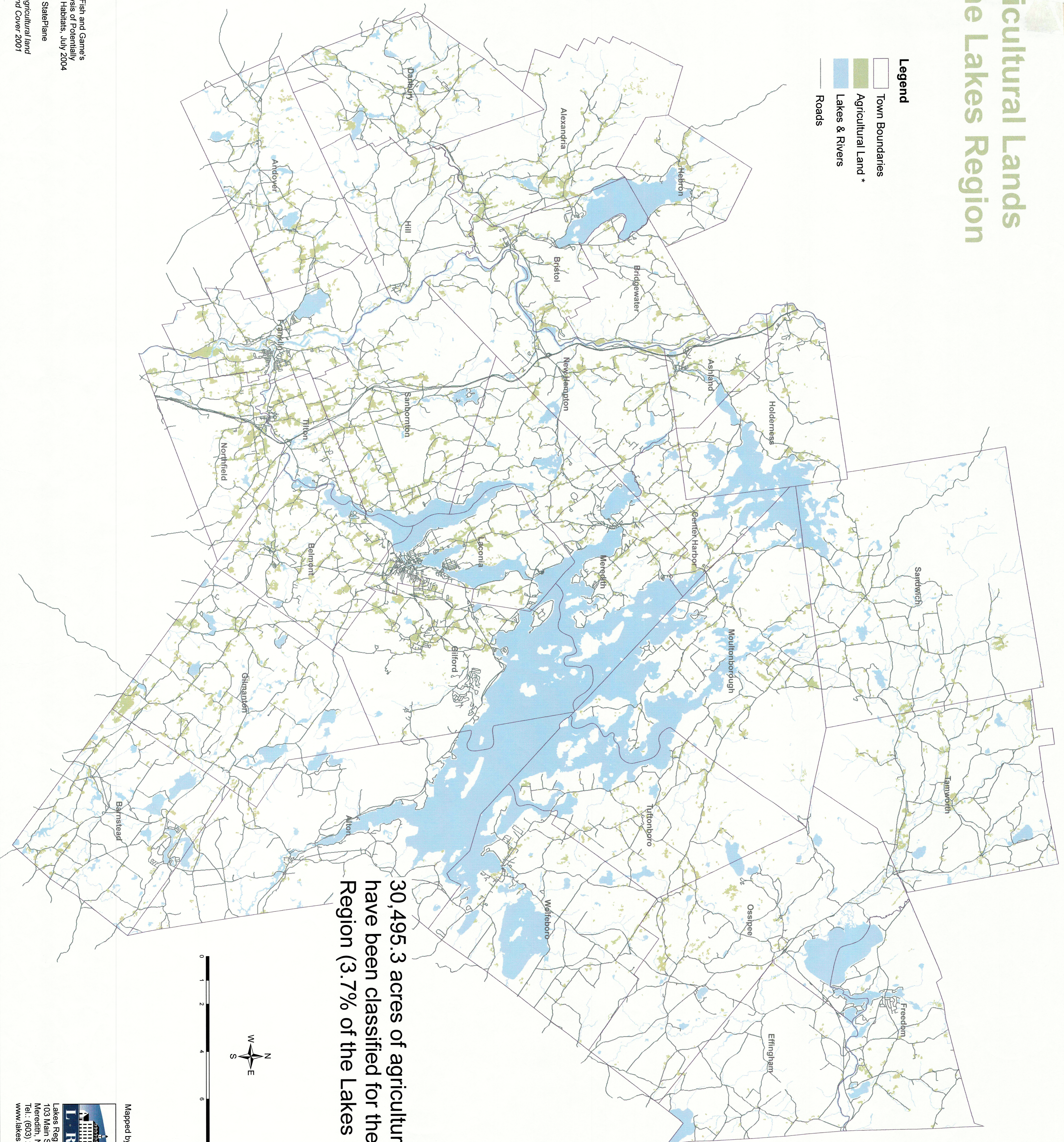
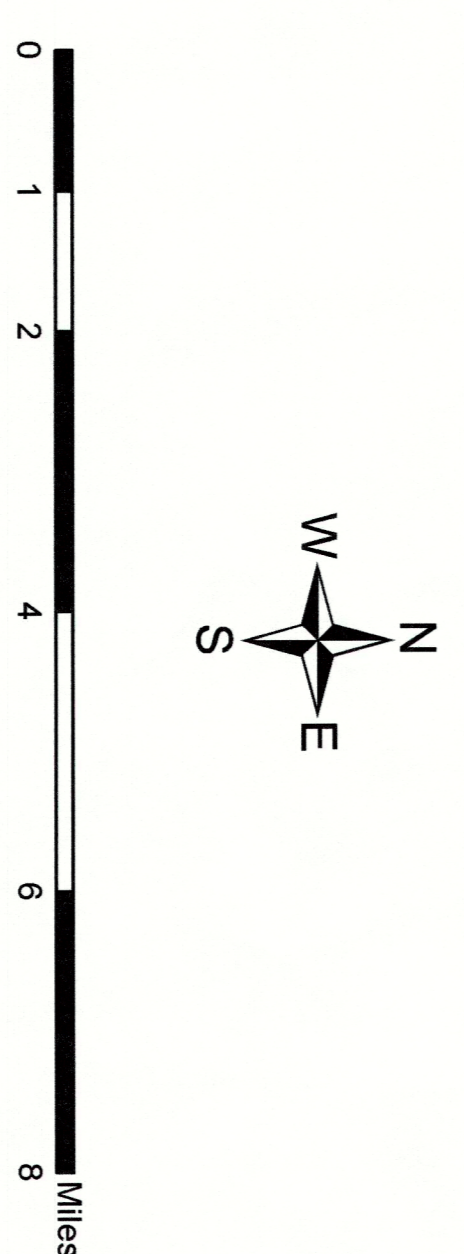


Agricultural Lands in the Lakes Region

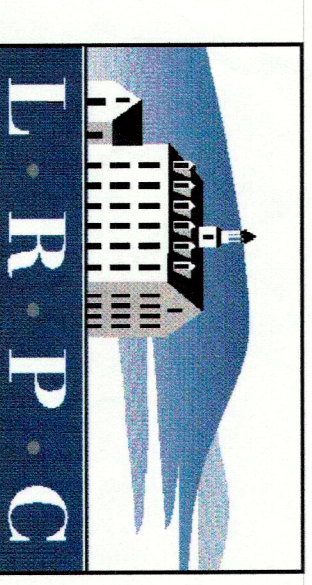
- Legend**
-  Town Boundaries
 -  Agricultural Land *
 -  Lakes & Rivers
 -  Roads



**30,495.3 acres of agricultural lands
have been classified for the Lakes
Region (3.7% of the Lakes Region)**



Mapped by:



Lakes Region Planning Commission
103 Main Street, Suite #3
Meriden, NH 03253
Tel.: (603) 279-8171
www.lakesrpc.org

Data Source: NH Fish and Game's
Coarse Filter Analysis of Potentially
Significant Wildlife Habitats, July 2004

Datum: NAD 1983 StatePlane

* Identification of agricultural land
is based on NH Land Cover 2001

Source: ESRI

Map of RIVER AS LAND & AS LAND OF WATERSHED SURFACE