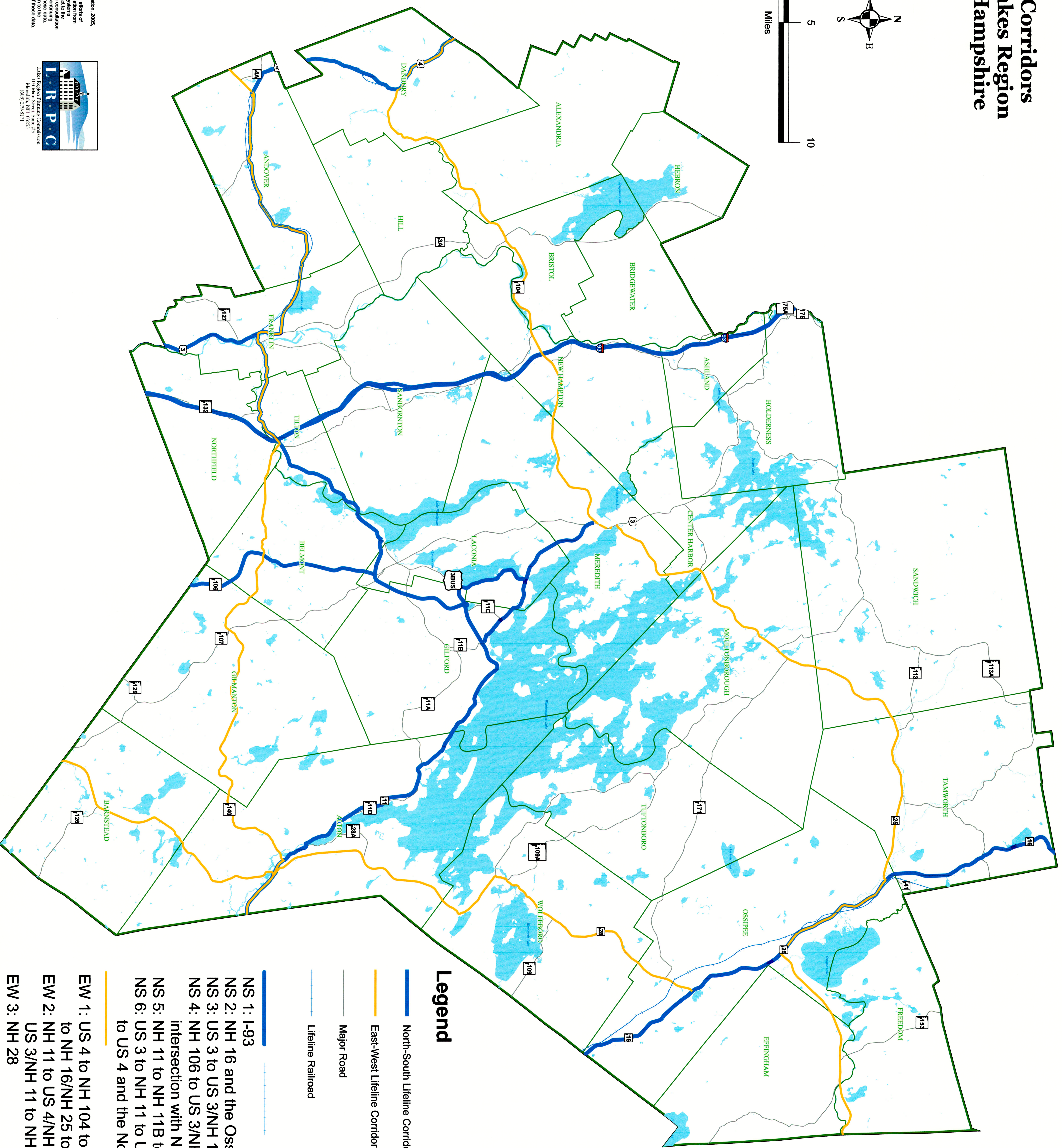
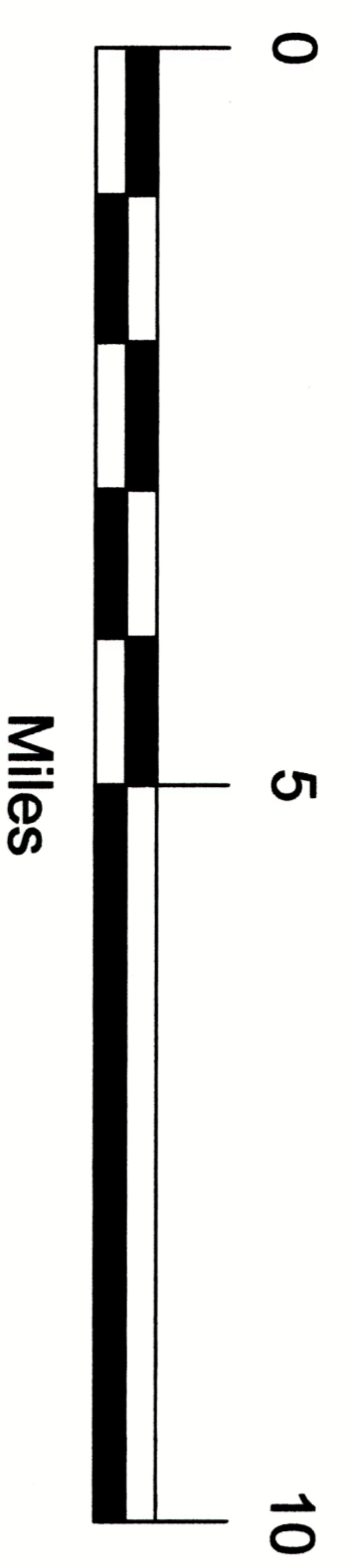
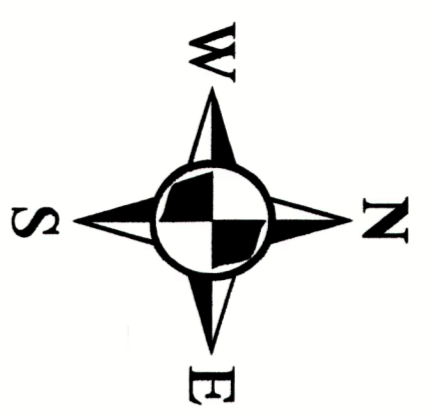


Lifeline Corridors in the Lakes Region of New Hampshire



Legend

- North-South Lifeline Corridor
- Town Boundary
- East-West Lifeline Corridor
- Major Road
- Water Body
- Lifeline Railroad
- NS 1: I-93
- NS 2: NH 16 and the Ossipee Railroad Line
- NS 3: US 3 to US 3/NH 11 to US 3
- NS 4: NH 106 to US 3/NH 11 to the intersection with NH 11B
- NS 5: NH 11 to NH 11B to US 3
- NS 6: US 3 to NH 11 to US 4/NH 11 to US 4 and the Northern Railroad Line
- EW 1: US 4 to NH 104 to US 3 to NH 25 to NH 16/NH 25 to NH 25
- EW 2: NH 11 to US 4/NH 11 to NH 11 to US 3/NH 11 to NH 140 to NH 11
- EW 3: NH 28

Data Source: NH Department of Transportation, 2005.
Digital data in NH GRANIT represent the efforts of the NH GRANIT project, which is a joint effort of the Office of Energy and Planning (OEP), and in consultation with the Office of Energy and Planning (OEP), and in consultation with the Office of Energy and Planning (OEP). Neither OEP nor CSRC make any claim to the validity or reliability of or to any implied uses of these data. For Planning Purposes Only.

