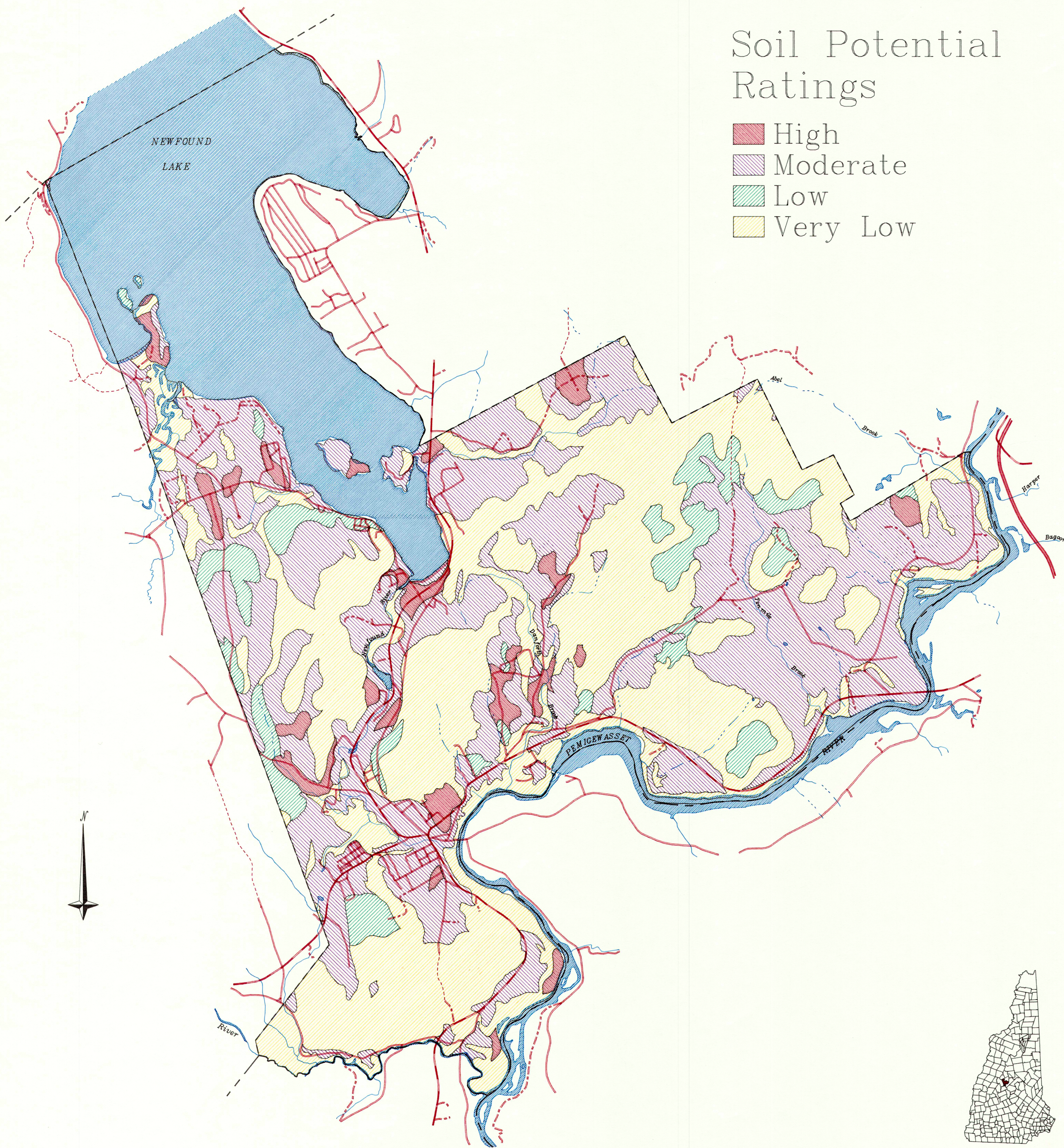


Soil Potential Ratings

- High
- Moderate
- Low
- Very Low



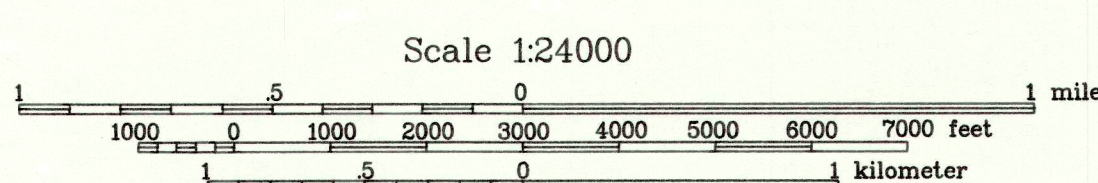
NEWFOUND RIVER WATERSHED BRISTOL, NH

THIS MAP WAS CREATED BY THE LAKES REGION PLANNING COMMISSION,
103 MAIN STREET, SUITE 3, MEREDITH, NH 03253.

THE SOILS LAYER WAS DERIVED FROM THE NATIONAL SOIL SURVEY
(SSURGO), mapped by the USDA, Soil Conservation Service, Durham, NH.
Delineations depict the dominant soil(s) making up the landscape. Inclusions
of other soils, too small to be delineated, are present within a delineation.
Enlargements of these data to scales greater than that at which they were
originally mapped can cause misunderstanding of the detail of the data. The
depicted soil boundaries and interpretations derived from them do not eliminate
the need for on-site sampling, testing, and detailed study of specific sites
for intensive uses. Thus, this map and its interpretations are intended for
planning purposes only. Digital data files are periodically updated. Files
are dated and users are responsible for obtaining the latest version of the
data. For technical information contact either the Lakes Region Planning
Commission, Meredith, NH, or the State Soil Scientist, SCS, Durham, NH.

DISCLAIMER: The soils data layer is a pre-certified SOIL GEOGRAPHIC DATABASE
(SSURGO), mapped by the USDA, Soil Conservation Service, Durham, NH.
Delineations depict the dominant soil(s) making up the landscape. Inclusions
of other soils, too small to be delineated, are present within a delineation.
Enlargements of these data to scales greater than that at which they were
originally mapped can cause misunderstanding of the detail of the data. The
depicted soil boundaries and interpretations derived from them do not eliminate
the need for on-site sampling, testing, and detailed study of specific sites
for intensive uses. Thus, this map and its interpretations are intended for
planning purposes only. Digital data files are periodically updated. Files
are dated and users are responsible for obtaining the latest version of the
data. For technical information contact either the Lakes Region Planning
Commission, Meredith, NH, or the State Soil Scientist, SCS, Durham, NH.

This map and its interpretations are intended for planning purposes only.



Rating	Acres	% Total
H	459	3.3%
M	4,651	33.2%
L	768	5.5%
VL	4,921	35.1%

LRPC
geographic information system

November, 1994