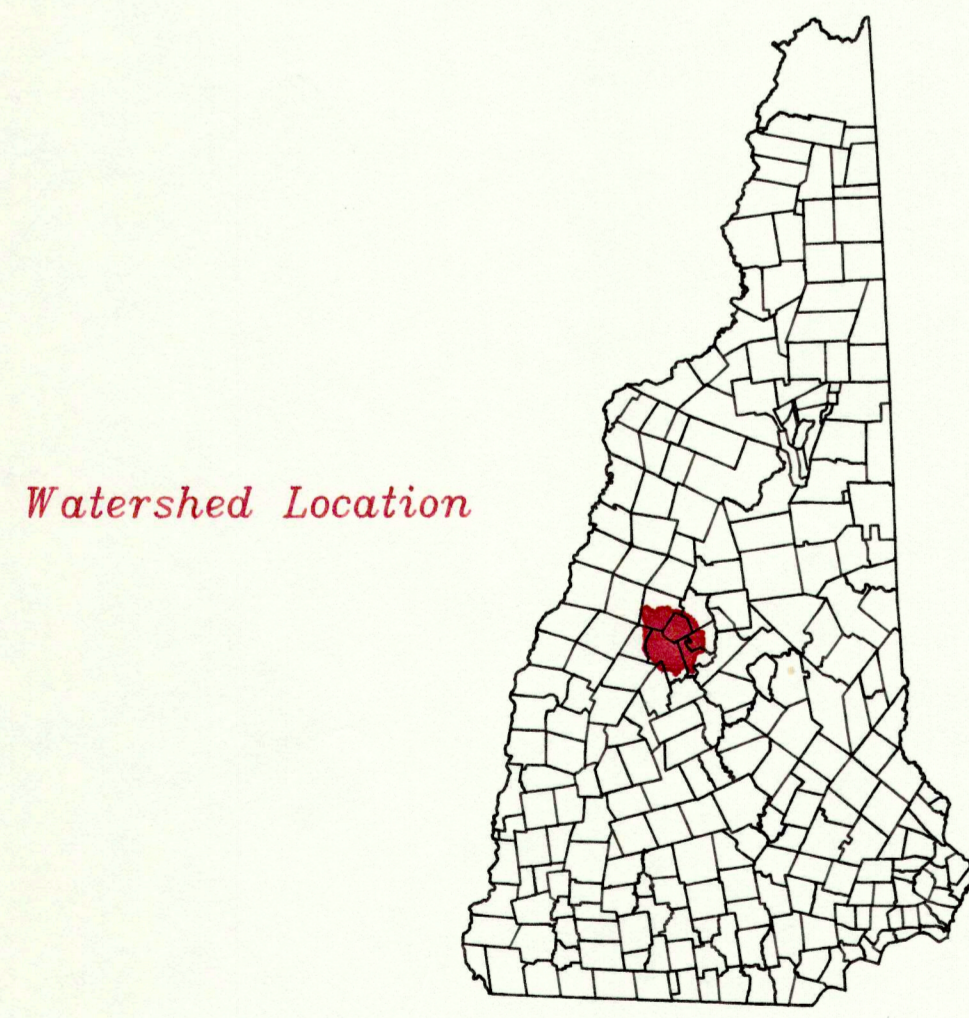
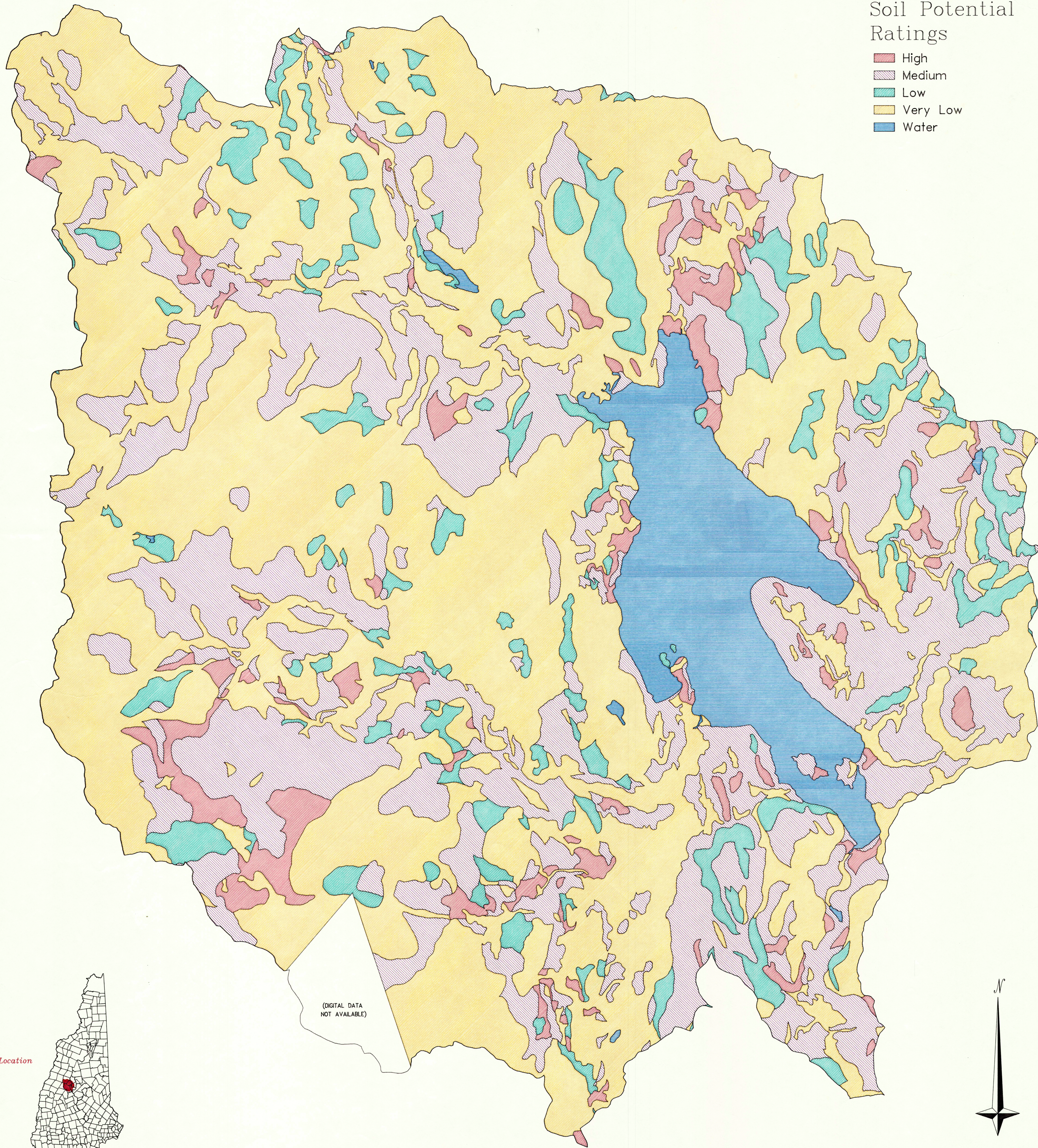


Soil Potential Ratings

- High
- Medium
- Low
- Very Low
- Water



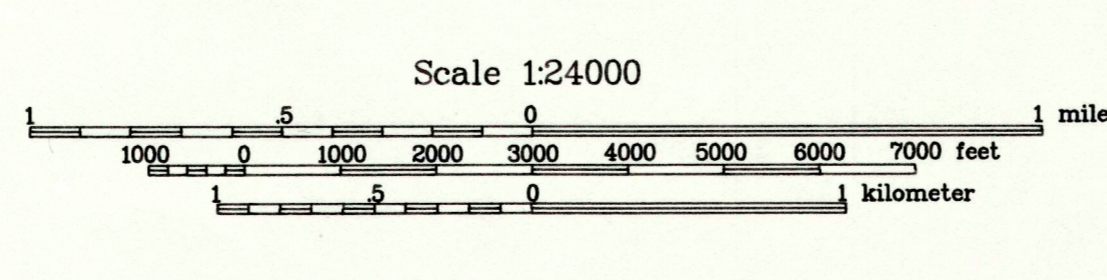
NEWFOUND RIVER WATERSHED

THIS MAP WAS CREATED BY THE LAKES REGION PLANNING COMMISSION, MERIDITH, NH 03253.

SOILS LAYER DERIVED FROM THE NATIONAL COOPERATIVE SOIL SURVEY (SCS), DIGITIZED AT COMPLEX SYSTEMS RESEARCH INSTITUTE, DURHAM, NH - GRANT. THE DATA IS PROVIDED AND MAINTAINED BY GRANT.

DISCLAIMER: The soils data layer is pre-certified SOIL GEOGRAPHIC DATABASE (SGDB), mapped by the USDA Soil Conservation Service, Durham, NH. Delineations depict the dominant soil(s) making up the landscape. Inclusions of other soils, too small to be delineated, are present within a delineation. Enlargements of these maps to scales greater than that of which they were originally mapped can cause misrepresentation of the detail of mapping. The depicted soil boundaries and interpretations derived from them do not eliminate the need for on-site sampling, testing and detailed study of specific sites for intensive users. Thus, this map and its interpretations are intended for planning purposes only. Digital data files are periodically updated. Files are dated and users are responsible for obtaining the latest version of the data. For technical information contact the State Soil Scientist, SCS, Durham, NH.

This map and its interpretations are intended for planning purposes only!



SPR Rating	Acreeage	Percent Total
High	2,722	5%
Medium	18,030	31%
Low	4,941	9%
Very Low	32,096	56%
Total	57,788	100%

