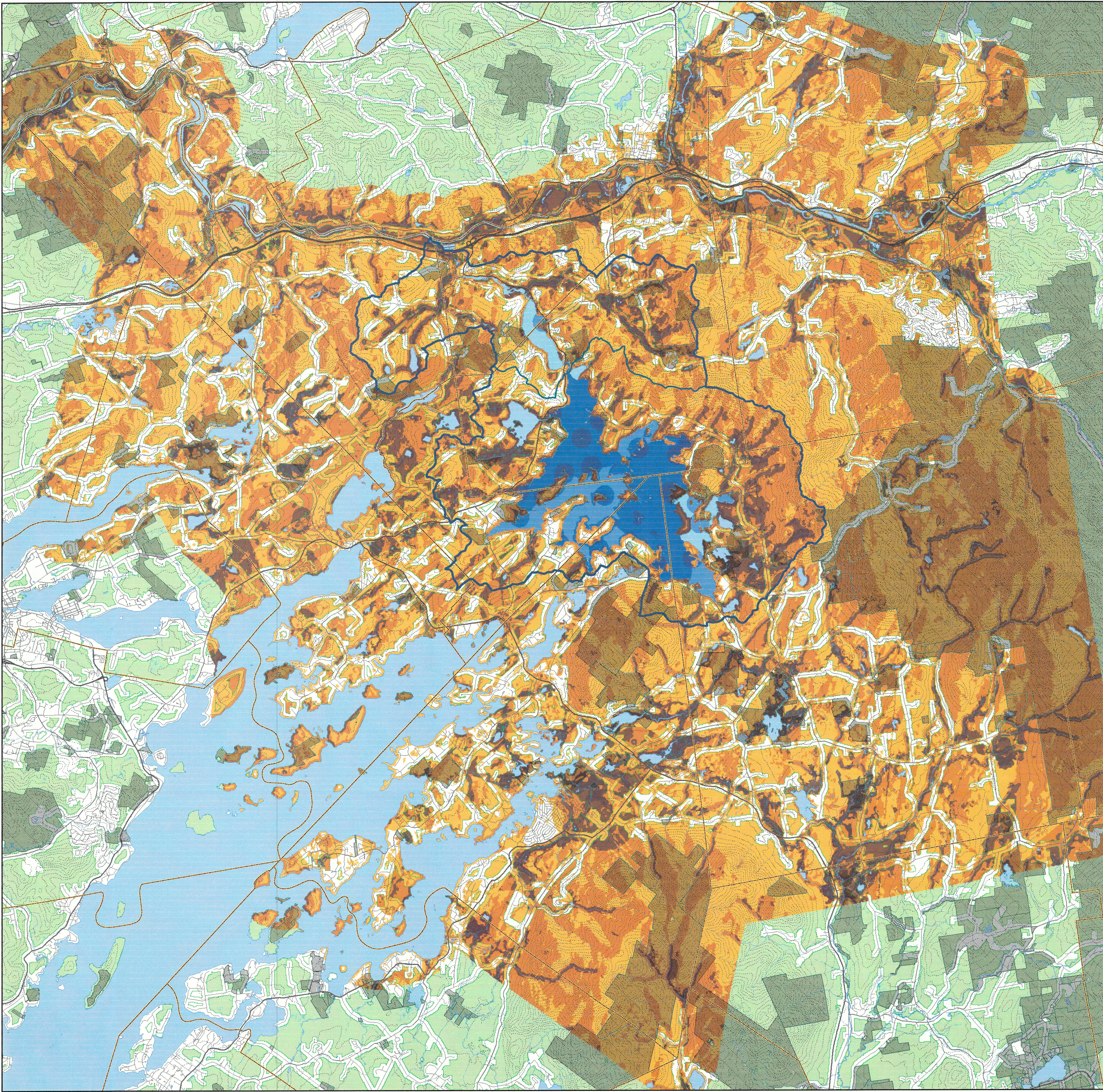


Squam Lakes Watershed NATURAL RESOURCE CO-OCCURRENCE VALUES



Natural Resource Co-occurrence Values

High : 8	High : 5
Low : 1	Low : 1

Legend:

- Town boundary
- Watershed boundary
- Riparian corridor
- Road or Street
- 100-Ft Contours
- Conservation/public Land
- Stream or Shoreline
- Lake, Pond or River
- Urban/fragmented habitat block

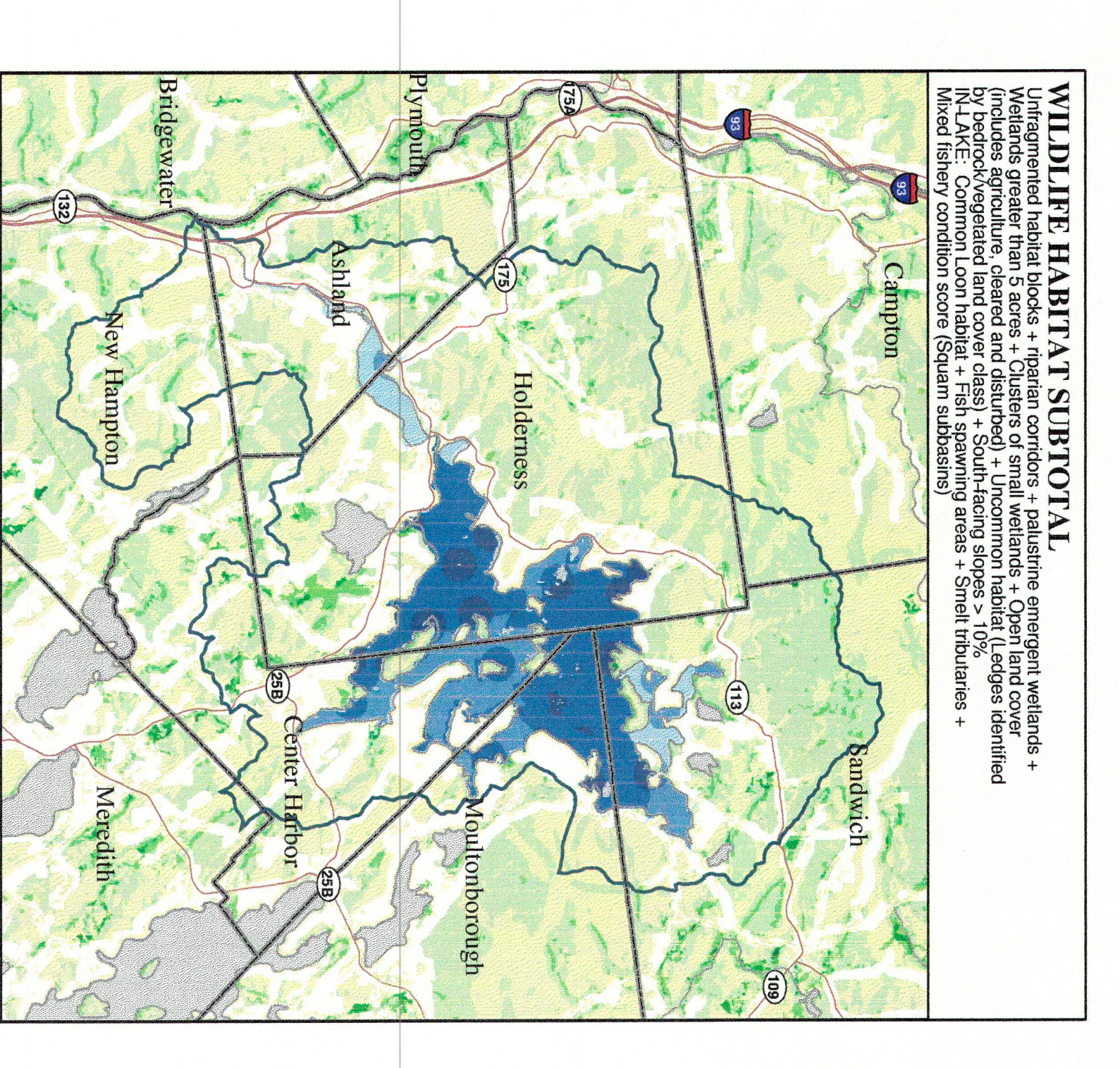
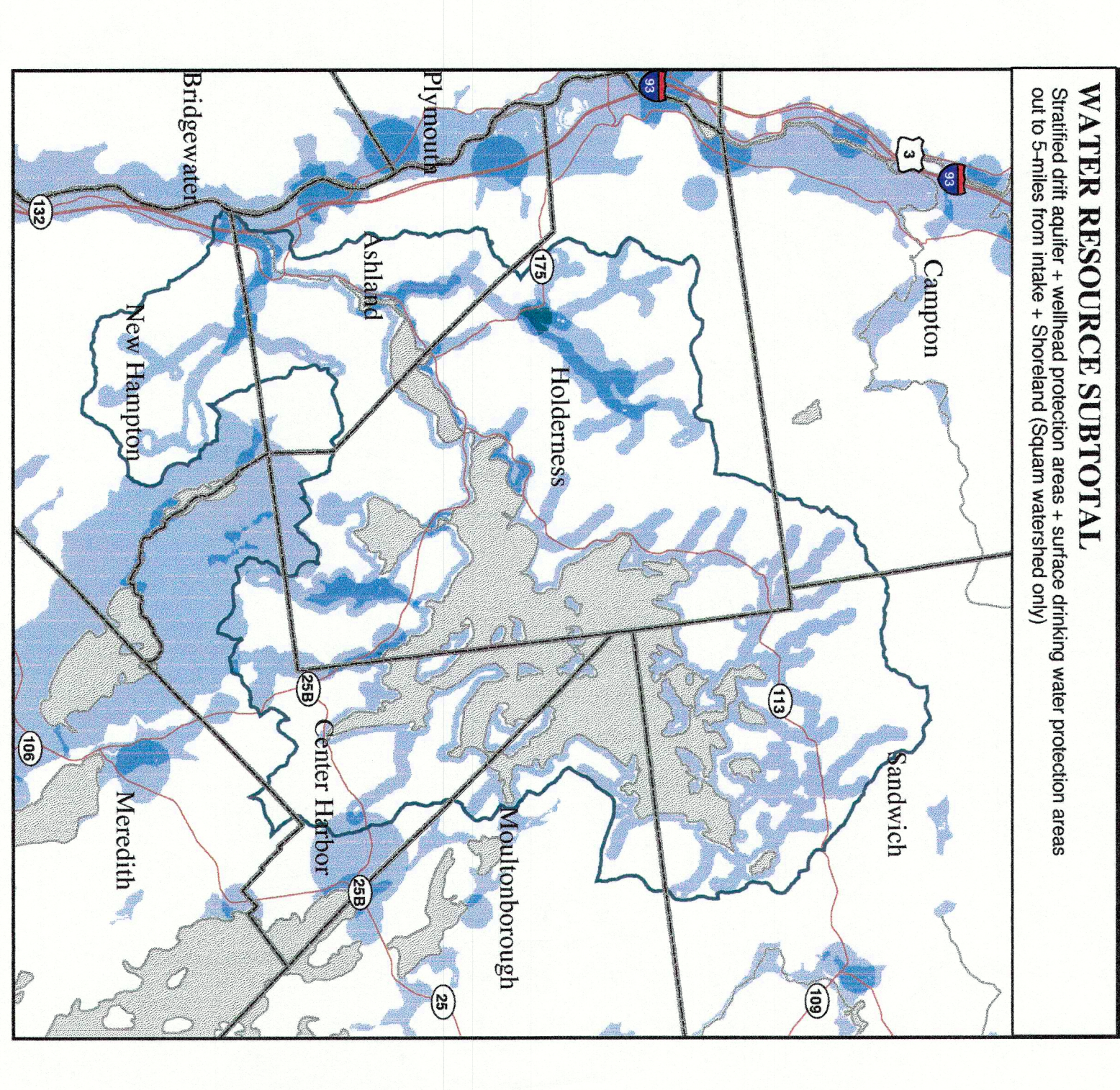
WATER RESOURCES
Natural Resource co-occurrence scores are based on:
—Drinking Water Protection Area
—Sanitized Data Aquifer
—Surface and Subsurface Water (out to 5-miles from intake)
—Shoreland (500 ft buffer of shoreline and tributaries; Squam watershed only)

SOILS
—Farmland soils of local or statewide importance (provisional data; Squam watershed only)

WILDLIFE HABITAT
—Riparian corridors
—Palustrine emergent wetlands
—Wetlands greater than 5 acres
—Clusters of small wetlands
—Riparian forest, open, and disturbed land
—Littoralian habitat (bedges identified by wetland/veg. land cover)
—South facing slopes > 10%

POLLUTANT RESOURCES
—Common loam habitat
—Fish spawning areas
—Shell enrichment

Please refer to accompanying maps and supporting documentation for assistance with interpreting scores. Scoring presented for all towns within the Squam Lakes Watershed extending to a 1-mile buffer.



**UNIVERSITY of NEW HAMPSHIRE
Cooperative Extension**

Assistance also provided by the NH Office of Energy and Planning

Digital data in this GRANIT represent the efforts of the contributing agencies to record information from the cited source materials. The Office of Energy and Planning (OEP), and in consultation with cooperating agencies, maintains a continuing program to identify, update, and disseminate this information. While the OEP, OEP, and the contributing agencies make no claim as to the validity or reliability or to any implied uses of these data. Please refer to accompanying maps for data source notes.

Scale: 0 to 10 Miles
0 5 10 15 Miles

North Arrow

Logos for NH Office of Energy and Planning, Environmental Services, and other partners.

COCCU/PAN/2
E801 P-4
30,803 KB