

Squam Lakes Watershed NATURAL RESOURCE CO-OCCURRENCE VALUES

Natural Resource Co-occurrence Values

High : 8 (in-lake) Low : 1

High : 5 (in-lake) Low : 1

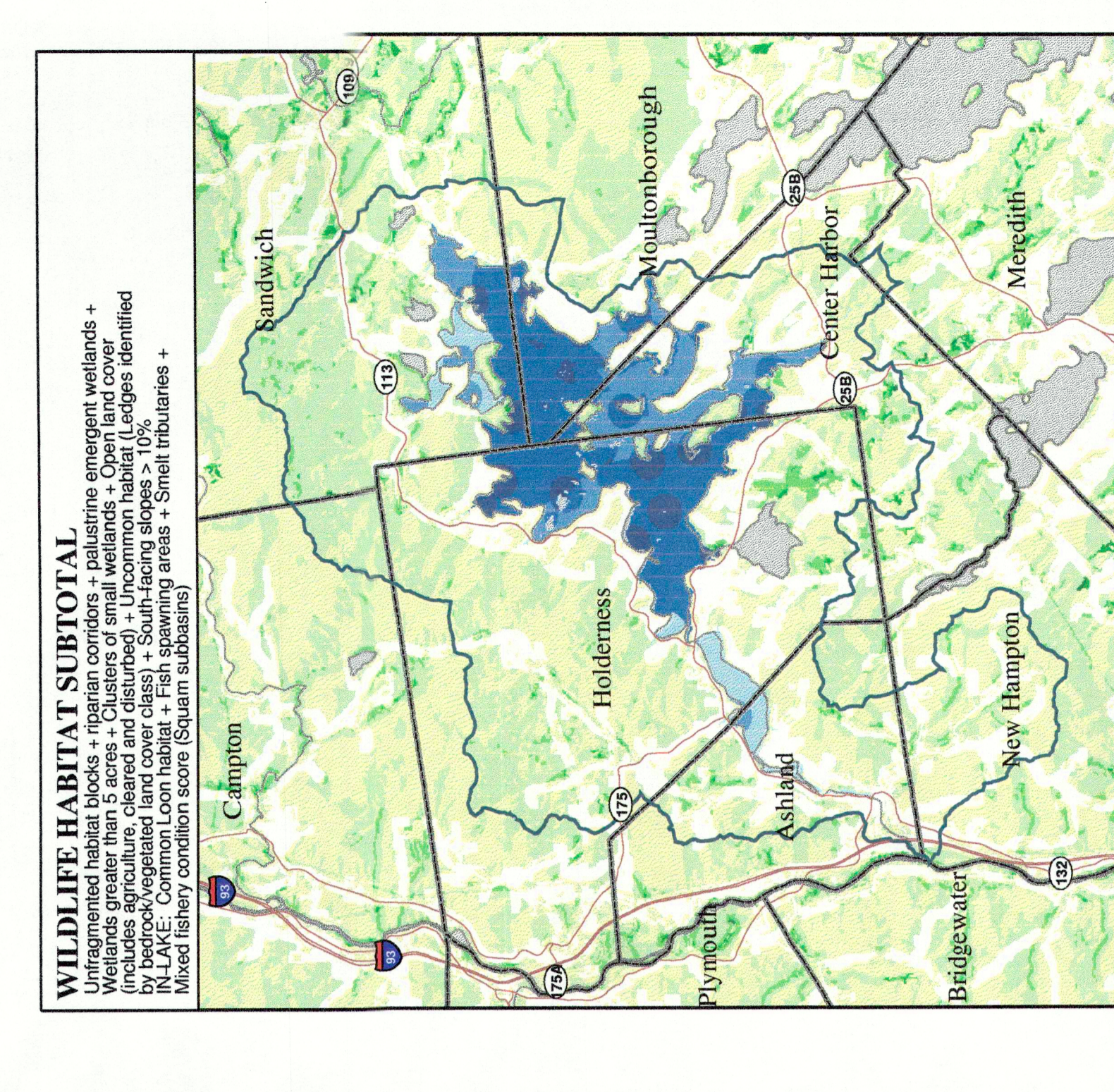
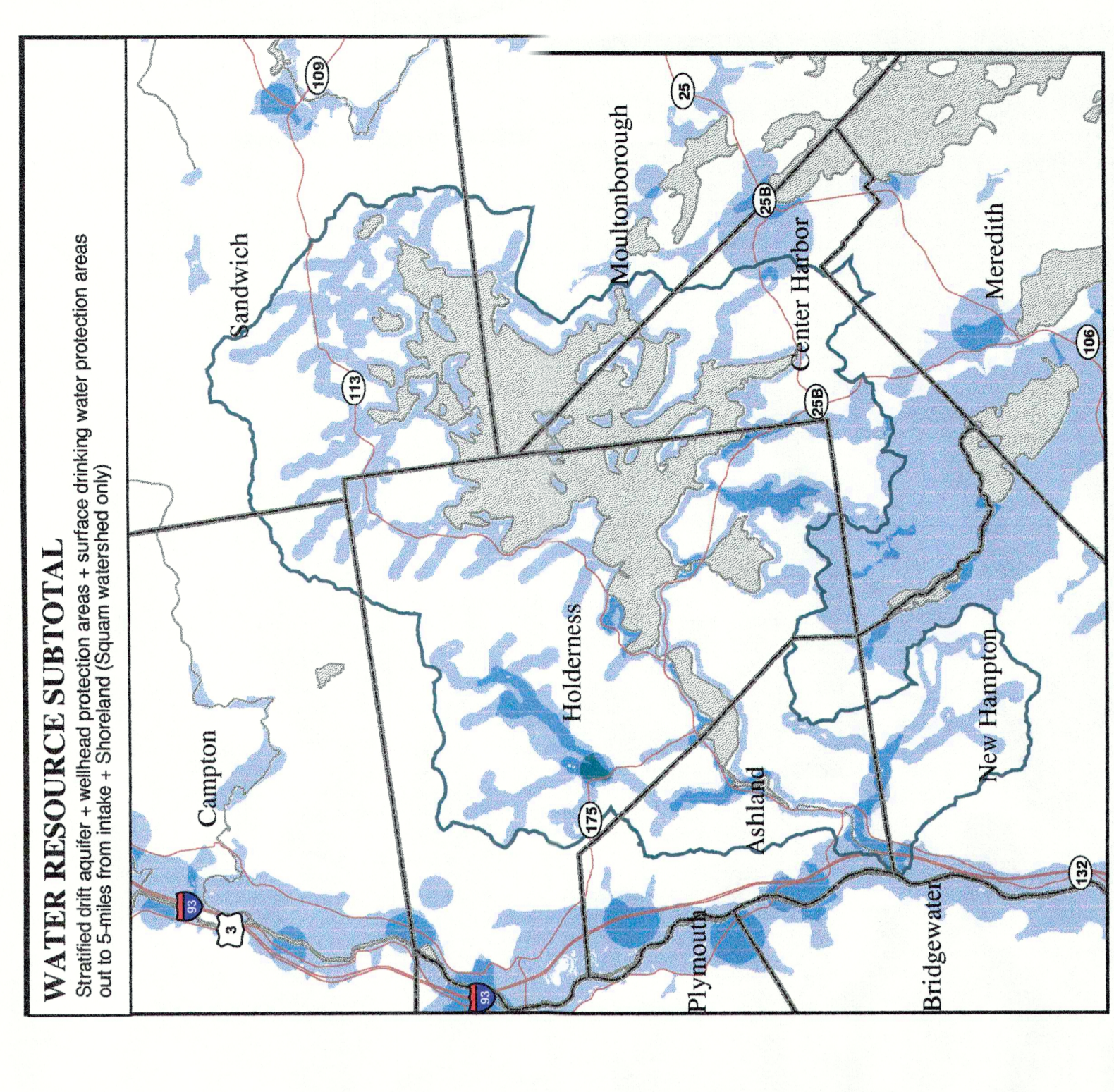
Natural Resource co-occurrence scores are based on:
WATER RESOURCES
 - Drinking Water Protection Areas (wetland areas of groundwater supplies and wetland areas of groundwater outflows out to 5-miles from intake)
 - Stratified Drift Aquifers (wetlands out to 5-miles from intake)
 - Shoreland (500 Ft buffer of shorelines and tributaries; Squam watershed only)

SOILS
 - Farmland soils of local or statewide importance (provisional data; Squam watershed only)

WILDLIFE HABITAT
 - Unfragmented blocks of natural land cover
 - Riparian corridors
 - Wetlands greater than 5 acres
 - Clusters of small wetlands
 - Agriculture cleared/other open and disturbed land
 - Wetlands identified by retrocheck; land cover
 - South facing slopes > 10%

IN-LAKE RESOURCES
 - Common Loon habitat
 - Common Loon habitat
 - Stream tributaries

Please refer to accompanying maps and supporting documentation for assistance with interpreting scores.



UNIVERSITY OF NEW HAMPSHIRE
 Cooperative Extension

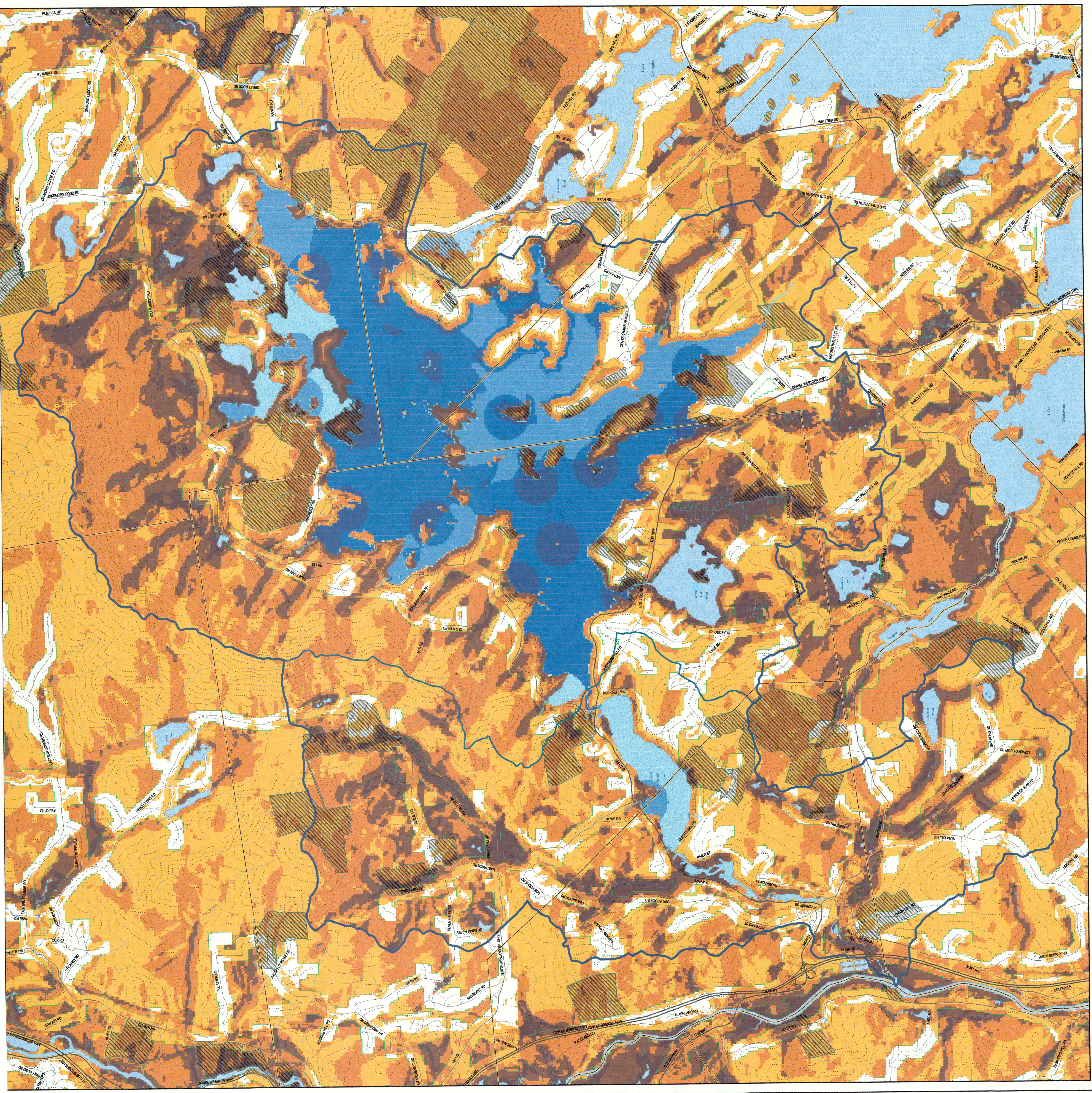
Assistance also provided by the NH Office of Energy and Planning

Other data in this GRANT represent the efforts of the contributing agencies to record information from the cited source materials. Complete Systems Research Center (CSRC) under contract to the University of New Hampshire. The University of New Hampshire is a cooperating agency. Maintaining a continuing program to identify and correct errors in these data. NH Fish and Game Department, as to the validity or reliability or to any implied uses of these data. Please refer to accompanying maps for data source notes.

Map prepared July 6, 2004
 New Hampshire Fish and Game Department

Scale: 0 2,000 4,000 Feet
 0 0.5 1 Miles

Logos: I.R.P.C., University of New Hampshire Cooperative Extension, Environmental Services, NH Fish and Game Department.



Co-occurrence = 15
 89.4 MB