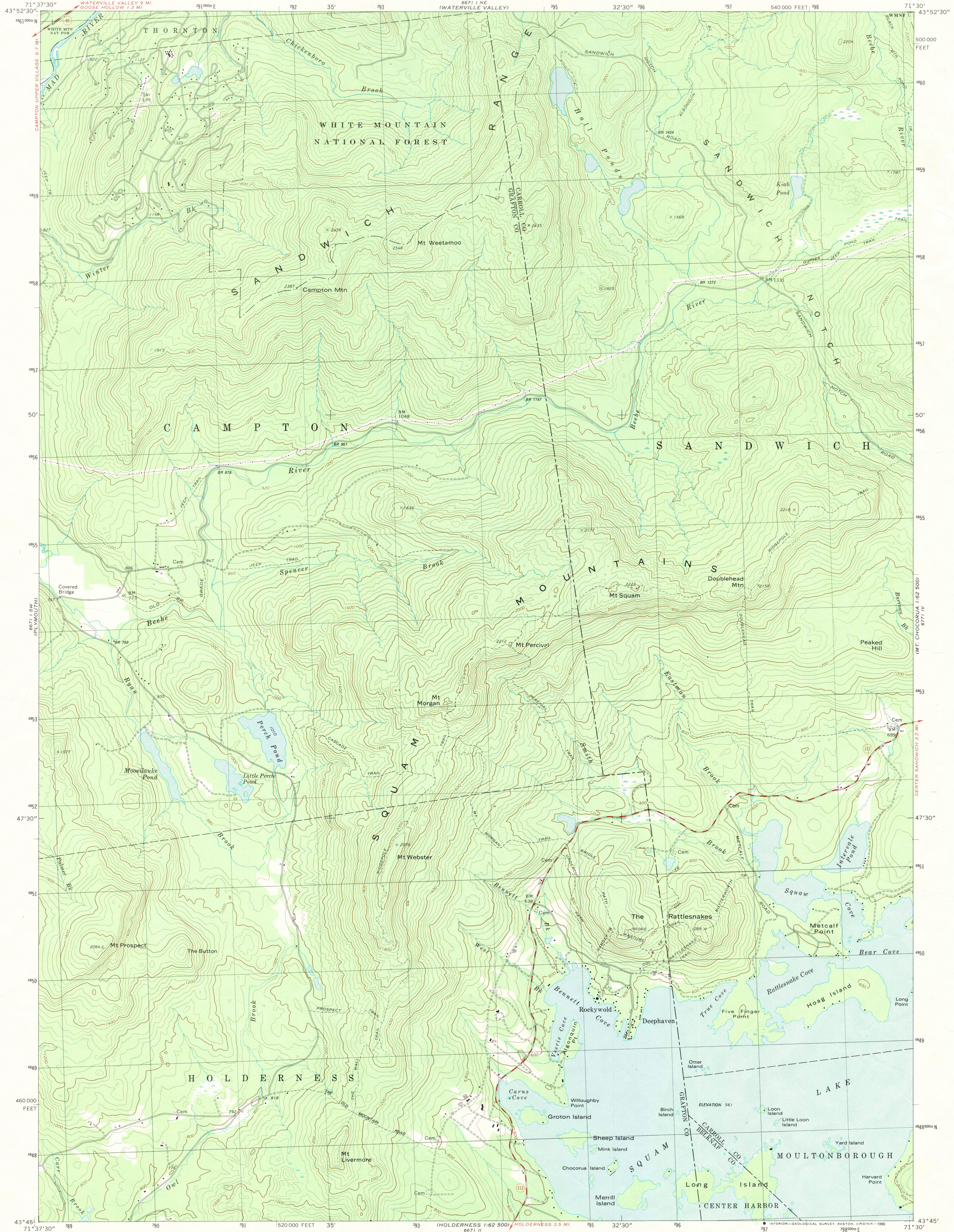
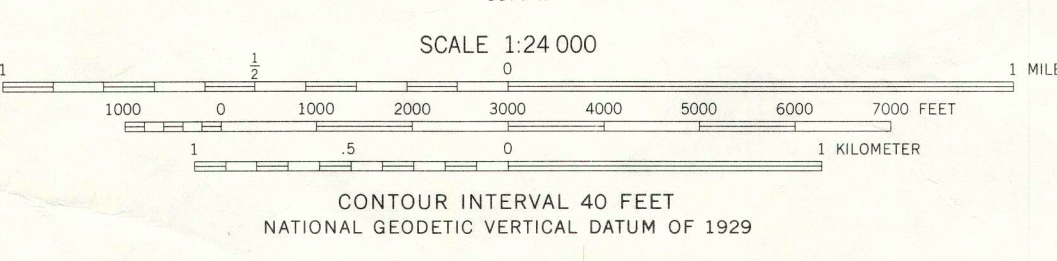
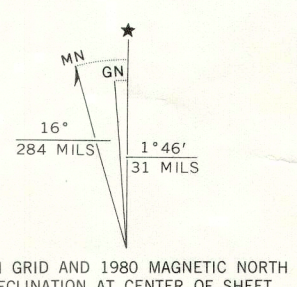


UNITED STATES
DEPARTMENT OF THE INTERIOR
GEOLOGICAL SURVEY

SQUAM MOUNTAINS QUADRANGLE
NEW HAMPSHIRE
7.5 MINUTE SERIES (TOPOGRAPHIC)
8E/4 PLYMOUTH 15' QUADRANGLE



Mapped, edited, and published by the Geological Survey
Control by USGS and NOS/NOAA
Topography by photogrammetric methods from aerial photographs
taken 1972. Field checked 1975. Map edited 1980
Projection and 10,000-foot grid ticks: New Hampshire coordinate
system, (transverse Mercator)
1000-meter Universal Transverse Mercator grid, zone 19
1927 North American Datum
To place on the predicted North American Datum 1983
move the projection lines 4 meters south and
39 meters west as shown by dashed corner ticks
There may be private inholdings within the boundaries of
the National or State reservations shown on this map
Map photosinspected 1983
No major culture or drainage changes observed



ROAD CLASSIFICATION

Primary highway, light-duty road, hard or hard surface	Light-duty road, hard or improved surface
Secondary highway, hard surface	Unimproved road
Interstate Route	U. S. Route
	State Route

THIS MAP COMPLIES WITH NATIONAL MAP ACCURACY STANDARDS
FOR SALE BY U. S. GEOLOGICAL SURVEY
DENVER, COLORADO 80225, OR RESTON, VIRGINIA 22092
A FOLDER DESCRIBING TOPOGRAPHIC MAPS AND SYMBOLS IS AVAILABLE ON REQUEST

SQUAM MOUNTAINS, N. H.
8E/4 PLYMOUTH 15' QUADRANGLE
N4345-W7130/7.5
1980
PHOTOINSPECTED 1983
DMA 6671 1 SE-SERIES V812

6671 II
1:62,500 (SE)

6671 IV
1:62,500 (SW)

85

WATERVILLE