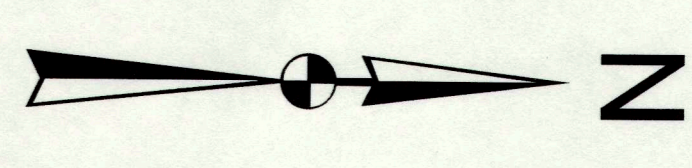
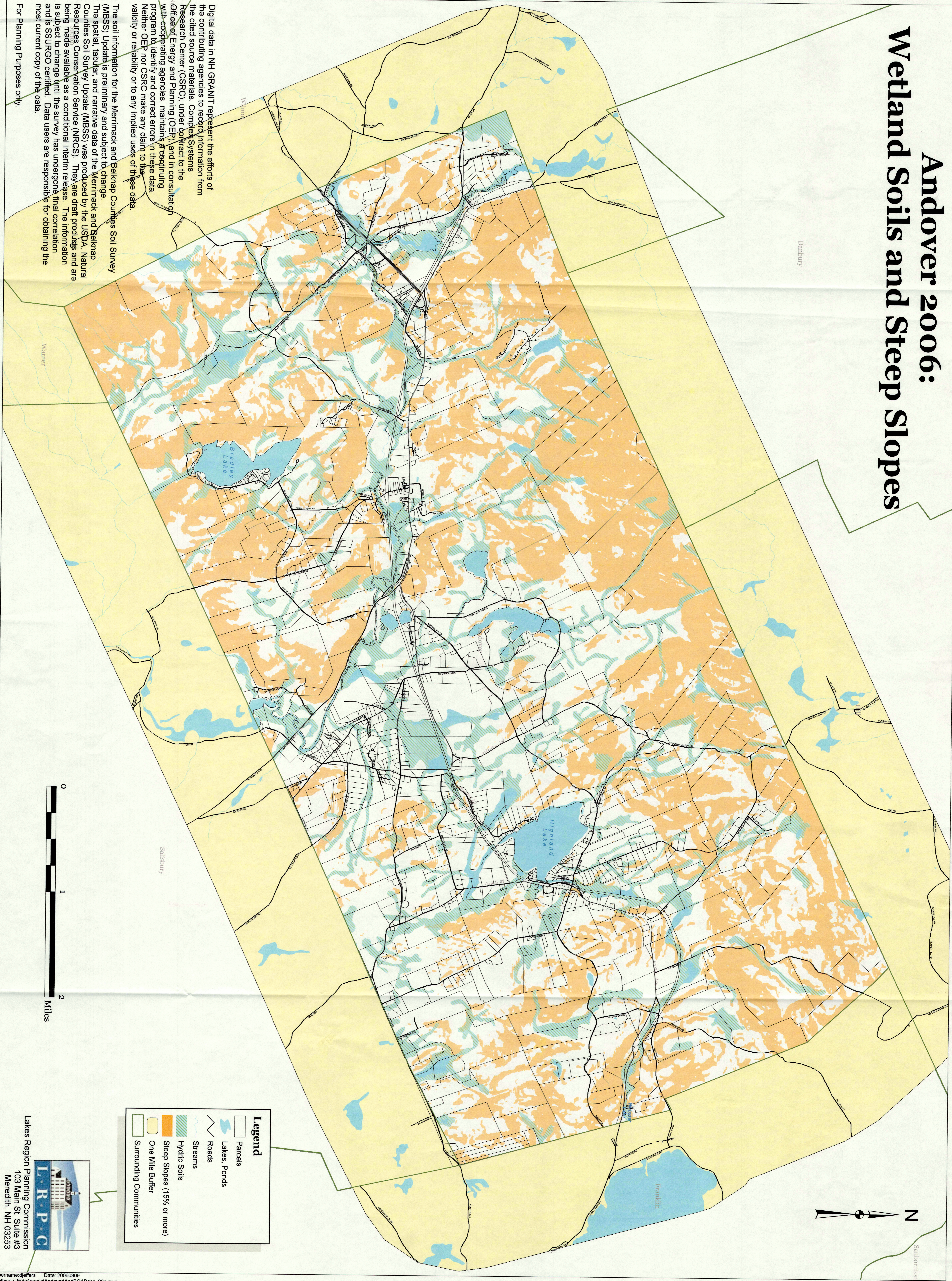


Andover 2006: Wetland Soils and Steep Slopes

Danbury



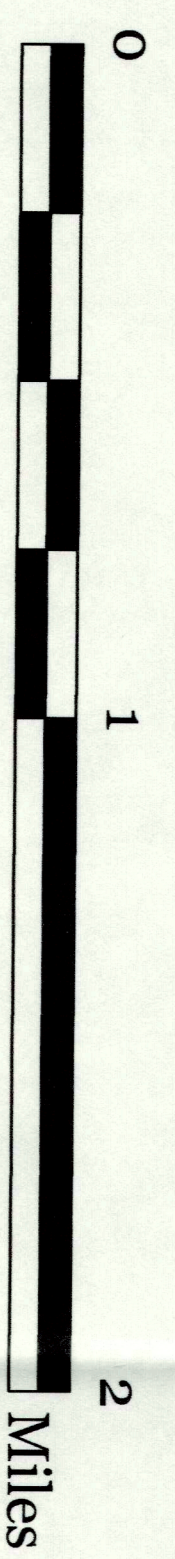
Sanborn



Digital data in NH GRANIT represent the efforts of the contributing agencies to record information from the cited source materials. Complete Systems Research Center (CSRC), under contract to the Office of Energy and Planning (OEP), and in consultation with cooperating agencies, maintains a continuing program to identify and correct errors in these data. Neither OEP nor CSRC make any claim to the validity or reliability or to any implied uses of these data.

The soil information for the Merrimack and Belknap Counties Soil Survey (MBSS) Update is preliminary and subject to change. The spatial, tabular, and narrative data of the Merrimack and Belknap Counties Soil Survey Update (MBSS) was produced by the USDA, Natural Resources Conservation Service (NRCS). They are draft products and are being made available as a conditional interim release. The information is subject to change until the survey has undergone final correlation and is SSURGO certified. Data users are responsible for obtaining the most current copy of the data.

For Planning Purposes only.



Legend

- Parcels
- Lakes, Ponds
- Roads
- Streams
- Hydric Soils
- Steep Slopes (15% or more)
- One Mile Buffer
- Surrounding Communities

Lakes Region
Planning Commission
103 Main St. Suite #3
Meredith, NH 03253