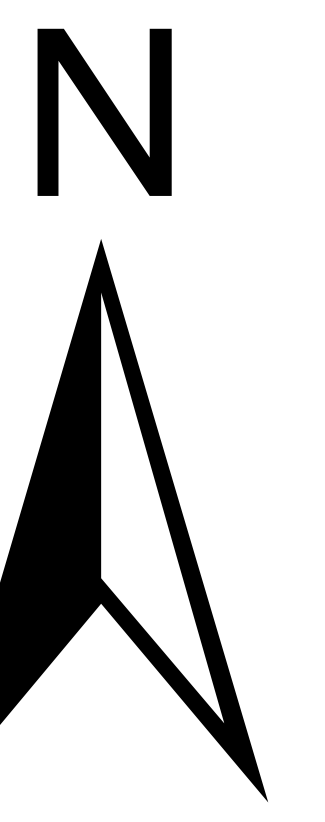


Covid-19 Affected New Unemployment Claims in the Lakes Region:



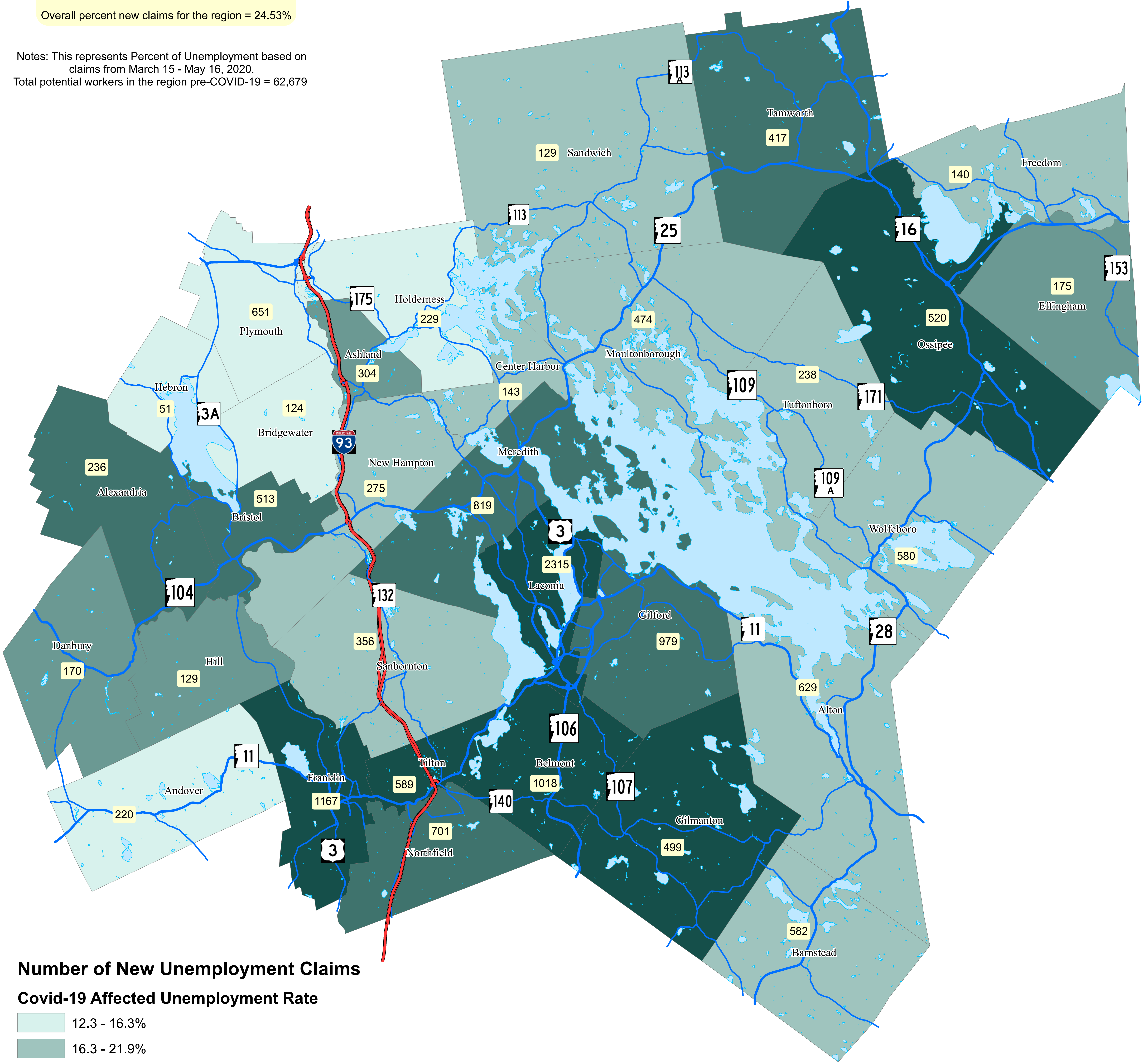
March - May (12.3 - 32.1%)

Number in yellow box indicates the number of new claims.

Total new claims in the region = 15,372 Mar - May
3,847 April - May

Overall percent new claims for the region = 24.53%

Notes: This represents Percent of Unemployment based on claims from March 15 - May 16, 2020.
Total potential workers in the region pre-COVID-19 = 62,679



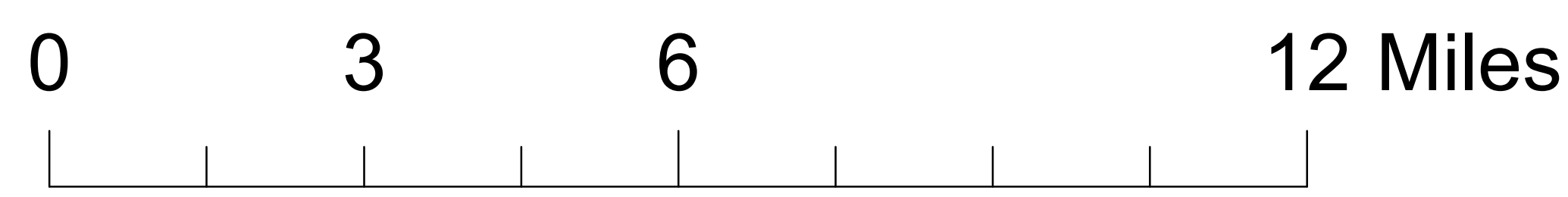
Number of New Unemployment Claims

Covid-19 Affected Unemployment Rate

- 12.3 - 16.3%
- 16.3 - 21.9%
- 21.9 - 25.0%
- 25.0 - 27.9%
- 27.9 - 32.1%

Road - Functional Class

- Interstate
- Arterial
- Collector
- Waterbodies



Digital data layers used in this map from NH GRANIT New Hampshire's Statewide GIS clearinghouse and NH DOT and NH Employment Security. NH GRANIT represents the efforts of contributing agencies from cited source materials. Complex Systems Research Center (CSRS), under the contract to the NH Office of Strategic Initiative (NHOSI), and under consultation with cooperating agencies, maintains a continuing program to identify and correct errors in these data. Neither LRPC, NHOSI, nor CSRC make any claim to the validity or reliability or to any implied uses if these data.

This map is for planning purposes only

