

DID YOU KNOW?

A decline in water quality could mean a loss of nearly 400 jobs in the Lakes Region, more than anywhere else in NH.

(Source: NH Lakes Study, 2007)

Ossipee is part of the Ossipee Watershed & Ossipee River Aquifer

Home of New England's largest stratified drift aquifer.

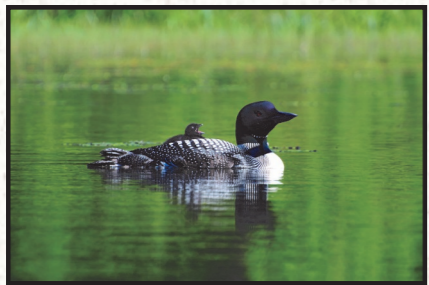
Property values...



Tourism...

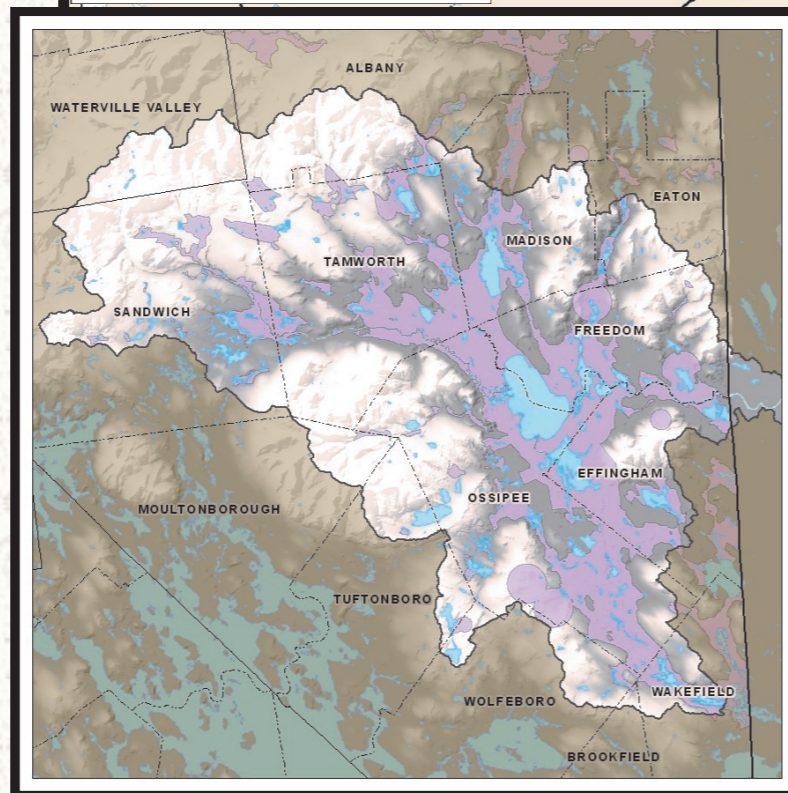
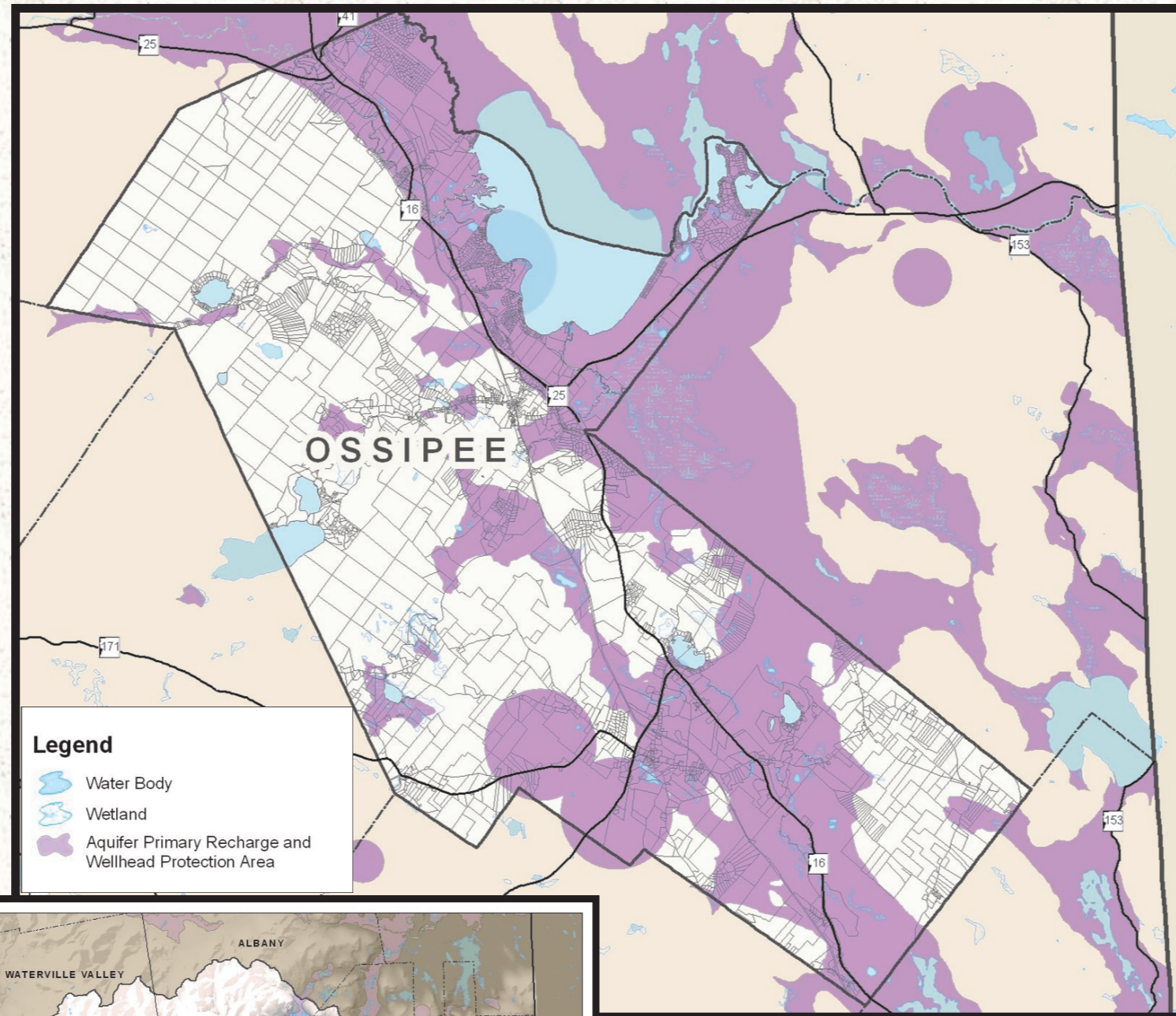


Recreation...



Wildlife...

...all depend upon clean water.



JOIN US...

GREEN MOUNTAIN CONSERVATION GROUP

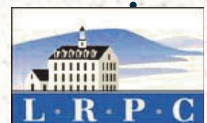
in protecting our WATER for current and future generations!

"HEALTHY WATER ... HEALTHY COMMUNITIES"



Please help and support efforts to protect water in your town.

Maps created by Lakes Region Planning Commission of geohydrology and water quality of stratified-drift aquifers in the Saco and Ossipee River basins, East-Central New Hampshire, USGS Water-Resources Investigations Report 94-4182.



Lakes Region Planning Commission
103 Main St. Suite #3
Meredith NH 03253
Tel. 603.279.8171
Fax 603.279.0200
www.lakesrpc.org



Green Mountain Conservation Group
PO Box 95
Effingham, NH 03882
Tel. 603.539.1859
Fax 603.539.3525



Funding for this project was provided in part by a NH DES Local Source Water Protection Grant from the NH Department of Environmental Services.

DID YOU KNOW?

Oil from one car can contaminate 1 million gallons of groundwater.

(Source: US Environmental Protection Agency)