

**DID YOU KNOW?**

*A decline in water quality could mean a loss of nearly 400 jobs in the Lakes Region, more than anywhere else in NH.*

(Source: NH Lakes Study, 2007)

# Tamworth is part of the Ossipee Watershed & Ossipee River Aquifer

*Home of New England's largest stratified drift aquifer.*

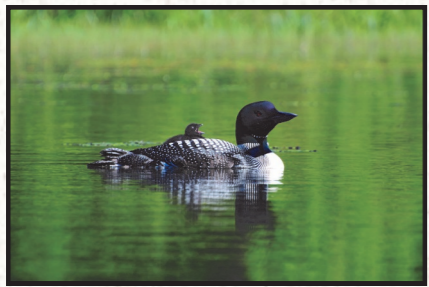
## Property values...



## Tourism...



## Recreation...



**Wildlife...**  
**...all depend upon clean water.**



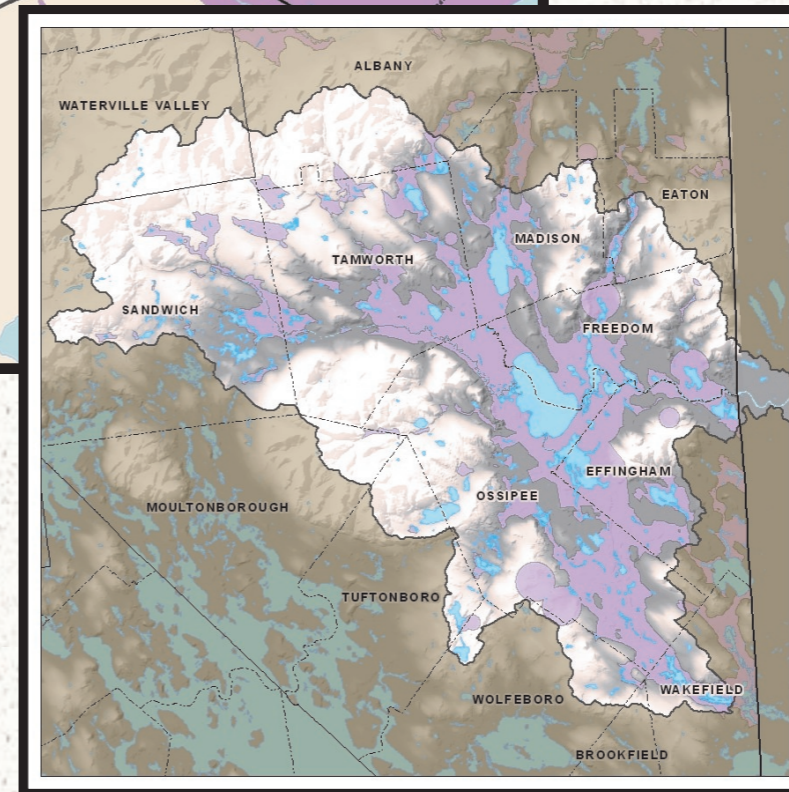
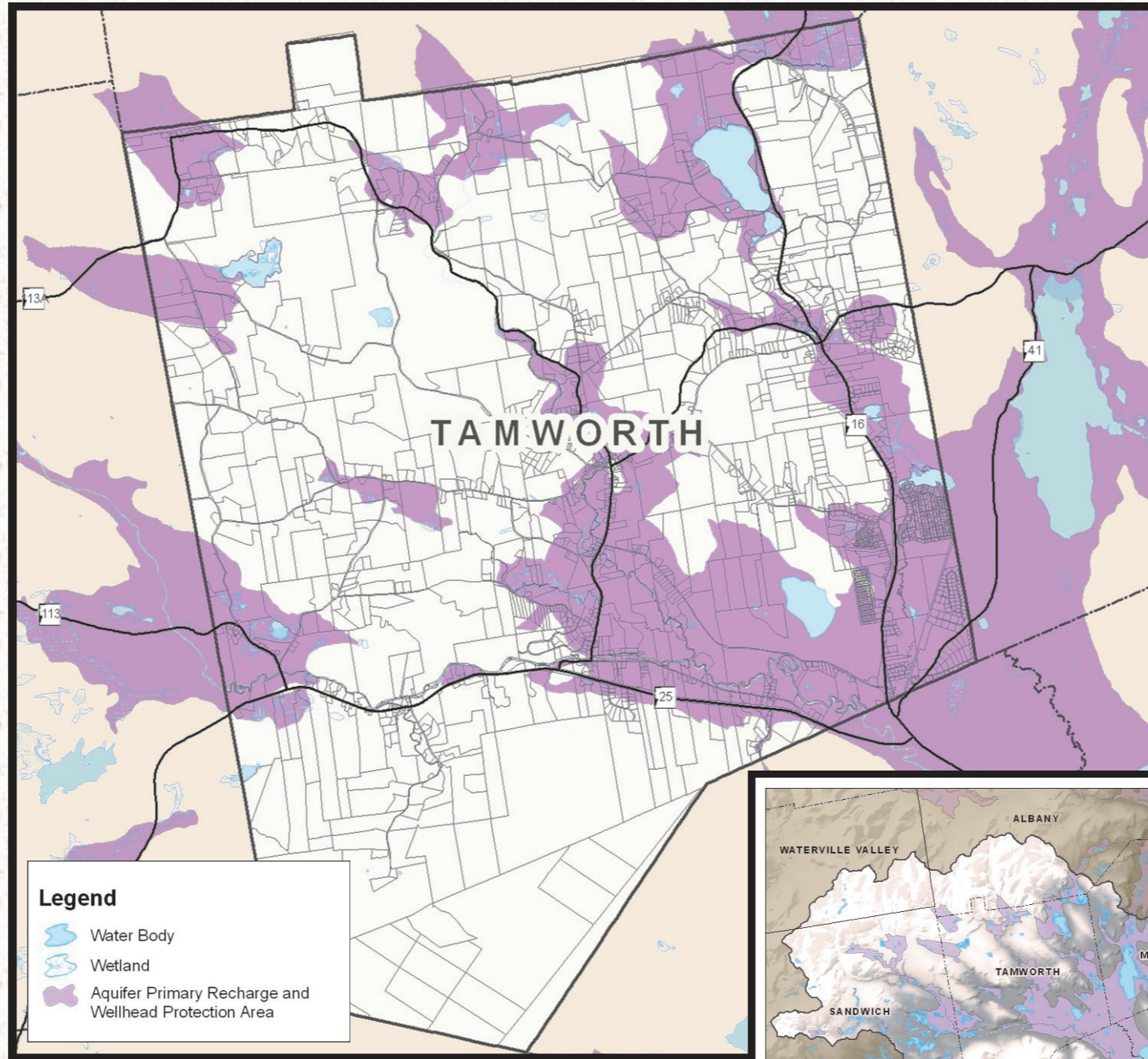
Lakes Region Planning Commission  
103 Main St. Suite #3  
Meredith NH 03253  
Tel. 603.279.8171  
Fax 603.279.0200  
www.lakesrpc.org



Green Mountain Conservation Group  
PO Box 95  
Effingham, NH 03882  
Tel. 603.539.1859  
Fax 603.539.3525




Funding for this project was provided by a NH DES Local Source Water Protection Grant from the NH Department of Environmental Services.

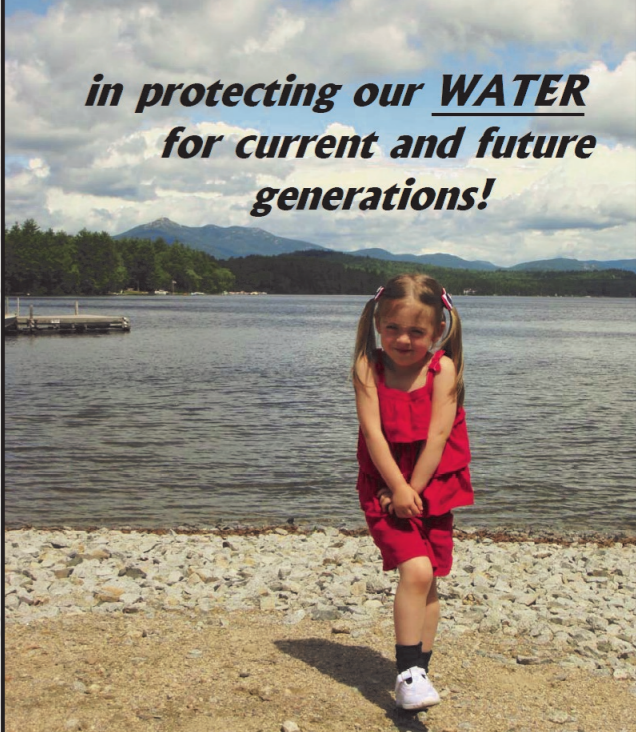


**Please help and support efforts to protect water in your town.**

Maps created by Lakes Region Planning Commission of geohydrology and water quality of stratified-drift aquifers in the Saco and Ossipee River basins, East-Central New Hampshire, USGS Water-Resources Investigations Report 94-4182.

**JOIN US...** 

*in protecting our WATER for current and future generations!*



**"HEALTHY WATER ... HEALTHY COMMUNITIES"**



**DID YOU KNOW?**

*Oil from one car can contaminate 1 million gallons of groundwater.*

(Source: US Environmental Protection Agency)