

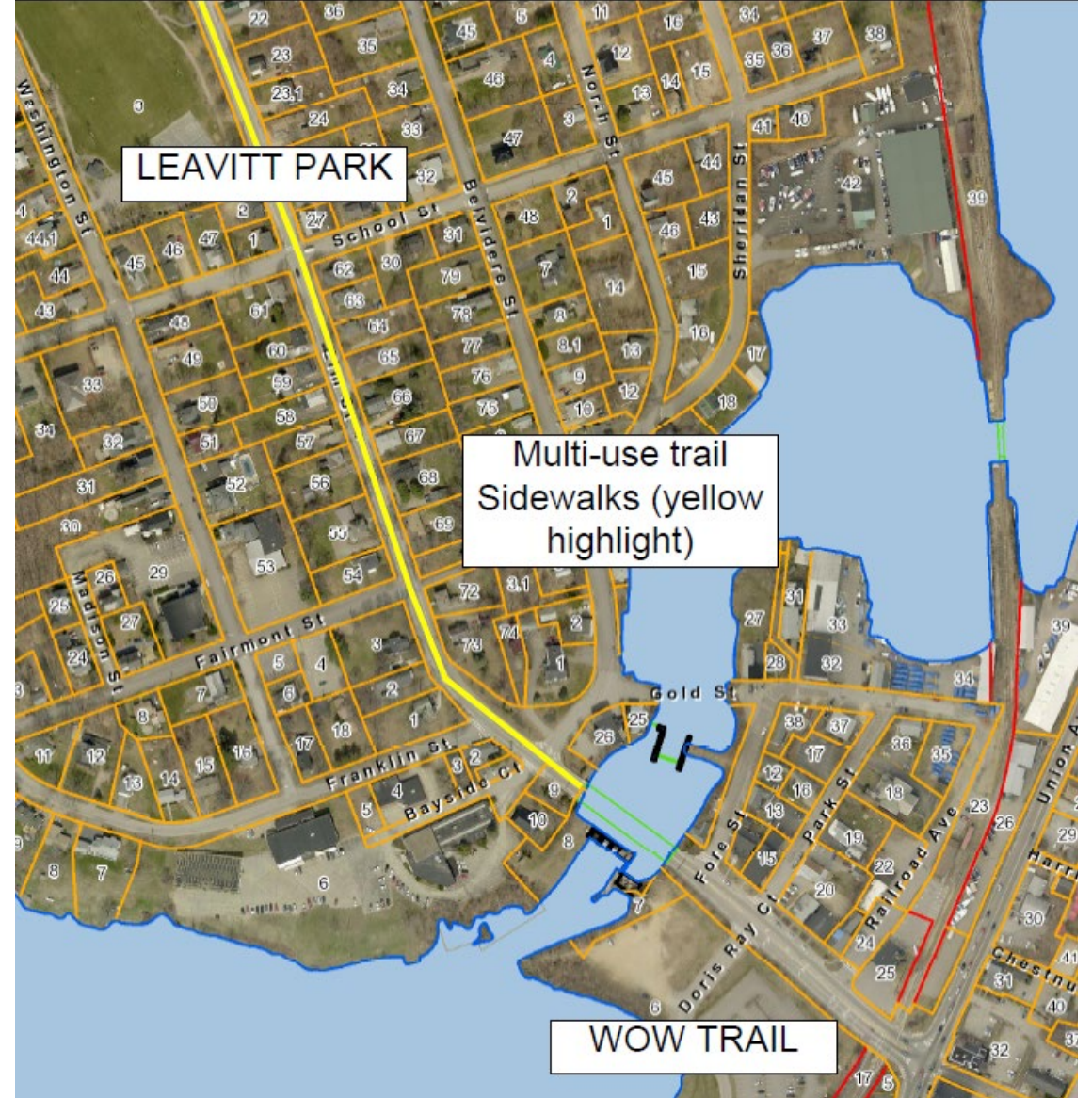
# ELM STREET

## Multi-use trail and sidewalks

### *LACONIA*

---

- ❖ Multi-use trail
- ❖ Sidewalk reconstruction
- ❖ ADA pedestrian accessibility
- ❖ RRFB's





# Scope, Purpose and Need

---

**SCOPE:** Construct new multi-use trail • Reconstruct sidewalks • Pedestrian accessibility • Pedestrian signals (RRFB's) • Upgrade sewer and drainage infrastructure • Full width paving

**PURPOSE:** Provide residents, visitors, and children safe access to an elementary school, City park and the Lakeport commercial district along a busy transportation corridor.

**NEED:** Walkways that are accessible and usable for persons with disabilities • Create a walkable/bikeable community • Safe pedestrian crossings

# TAP Score Criteria

---



Project  
Connectivity



Stress  
Analysis



Improve Safety  
Conditions



Readiness and  
Support

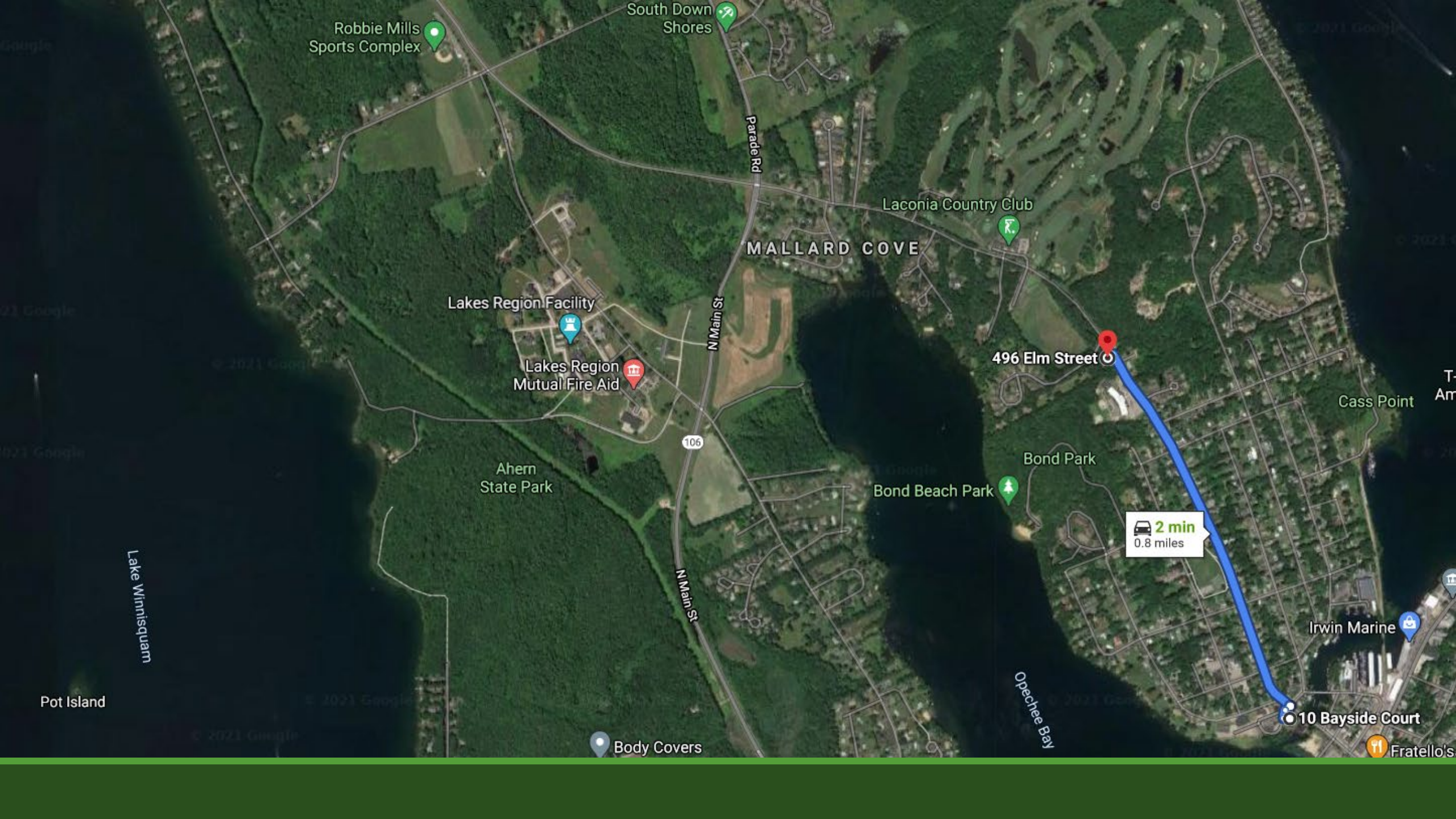


Financial  
Readiness



Feasibility





Robbie Mills Sports Complex

South Down Shores

Parade Rd

Laconia Country Club

MALLARD COVE

Lakes Region Facility

Lakes Region Mutual Fire Aid

N Main St

496 Elm Street

106

Ahern State Park

Bond Beach Park

Bond Park

Cass Point

Lake Winnisquam

Pot Island

N Main St

Opechee Bay

Irwin Marine

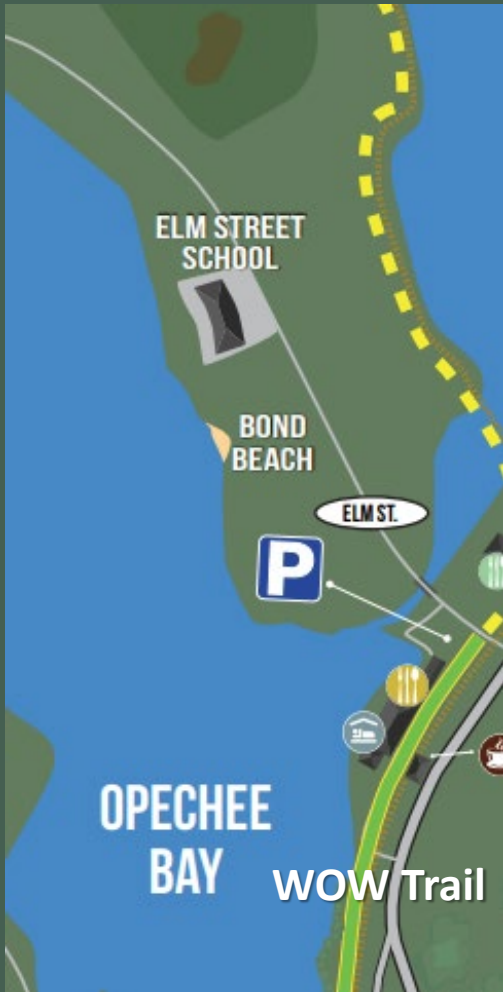
10 Bayside Court

Body Covers

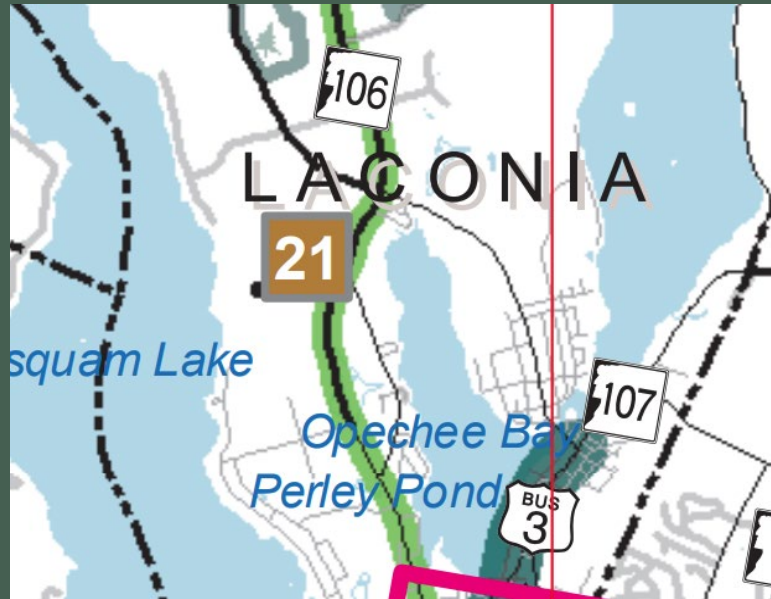
Fratello's



<https://www.wowtrail.org/>



Lakes Region | Maps | NH Bike/Ped | NH Department of Transportation



# Project Connectivity

Route 106 NH DOT  
Recommended Bicycle Route  
for the Lakes Region

Ahern State Park and Robbie  
Mills Sports Complex

WOW Trail

Downtown

# Safety

## *ELM STREET ELEMENTARY SCHOOL AND LEAVITT PARK*

---

### STRESS ANALYSIS

Mid-block, unsignalized crossings

Non-ADA compliant landings

Broken and uneven pavement

No curbing

Heavy traffic, truck route

### IMPROVE SAFETY CONDITIONS

Rectangular Rapid Flashing Beacons (RRFB's)

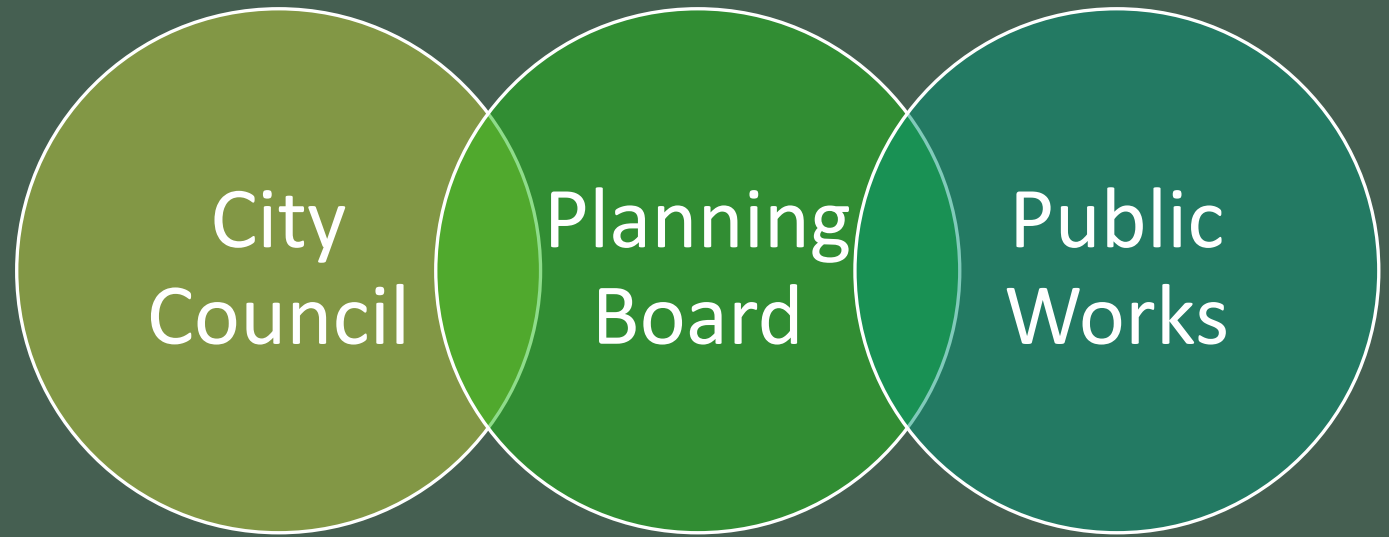
Level landings and detectable warning plates

8-ft wide multi-use trail supports pedestrians and recreational users

Granite and Bituminous curb

## Project Readiness and Support

- ❖ Master Plan
- ❖ City Council support
- ❖ Public Works' Ten-Year Plan
- ❖ Preliminary planning and design



*The sidewalk improvement project is part of a larger infrastructure improvement project being undertaken by the City which includes stormwater, sewer collection and roadway improvements.*



# Financial Readiness

---

\$1.6M Bond

\$1.4M CIP

\$1.7M CWSRF Loan

## *and Feasibility*

---

*The work proposed will occur entirely within the City's right-of-way in areas that are currently paved or disturbed. No known historic or cultural resources exist within the project area nor are there any known areas of contamination.*



[This Photo](#) by Unknown Author is licensed under [CC BY-NC](#)

# Questions

---