

TRANSPORTATION PLANNING

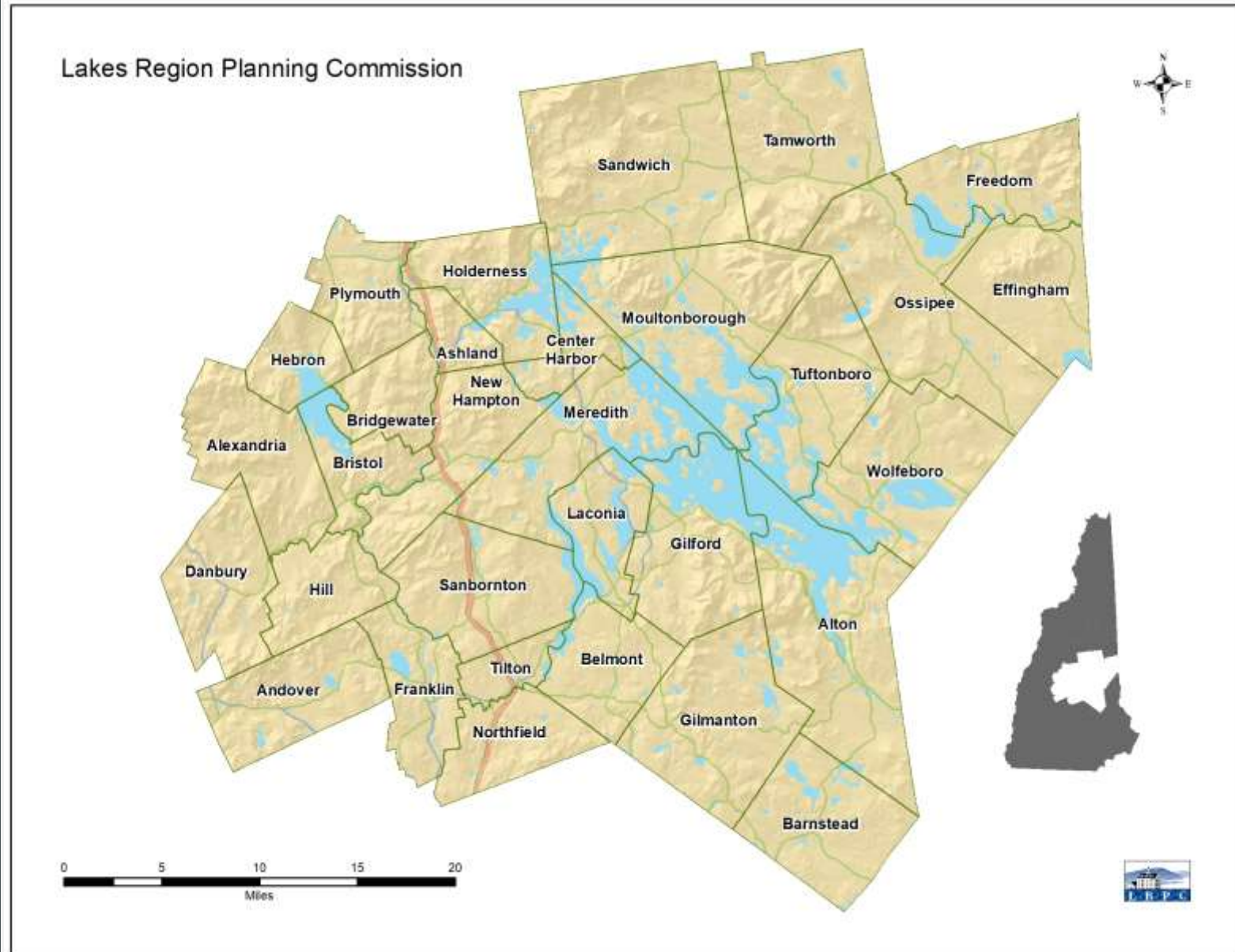
Lakes Region Planning Commission



ABOUT LRPC

30 Communities
50 Years of Service

“Planning Regionally – Growing Locally”



PRESENTATION OVERVIEW



Policy and Planning



Public Involvement and
Coordination



Transportation Planning
Assistance and Support

POLICY AND PLANNING



Regional Transportation Plan



Transportation Technical Advisory Committee (TAC)



State Ten-Year Plan



Other Transportation Funding Opportunities



Land use and Environmental Linkages



Bicycle and Pedestrian Transportation Planning



NH Scenic and Cultural Byway Program



Freight Planning

Economic Opportunity, Environmental Quality

REGIONAL
TRANSPORTATION
PLAN



Identifies regional
transportation priorities
and needs



Coordinates with State Ten
Year Plan (TYP) process and
Regional Transportation
Improvement Plan (TIP)

Lakes Region Plan 2015-2020

Transportation



TRANSPORTATION
TECHNICAL
ADVISORY COMMITTEE
(TAC)



ABOUT TAC

Advisory to LRPC Commissioners

- Representative from each of LRPC's 30 member communities
- Scoring and priority ranking of project proposals

Technical review of transportation plans and project proposals



STATE TEN YEAR PLAN

- ❑ Projects proposed by municipalities and regional planning commissions
- ❑ Projects evaluated, recommended by NH DOT
- ❑ Public meetings and hearings by Governor and Executive Council (known as GACIT)
- ❑ Project list recommended to state legislature
- ❑ TYP enacted into law by legislature and Governor

TAC TEN YEAR PLAN PROJECT DEVELOPMENT

Develop project proposals based on regional priorities

- Outreach to municipalities, NH DOT District Engineers
- Field review by TAC

Work with municipalities to provide supporting data, maps, etc.

Additional proposals under development for future TYP rounds



TYP PROJECT
DEVELOPMENT

Prioritize project proposals based on
NH DOT criteria:

- Mobility
- Safety
- Support
- Network Significance
- State of Repair
- Resiliency
- Alternative Modes

TYP FUNDING

Federal funding allocation based 50% on **region's population** and 50% on **miles of federal aid eligible highways**

- 2019 Lakes Region allocation = \$5.1 Million





REGIONAL
TRANSPORTATION
IMPROVEMENT
PROGRAM (TIP)

Includes Lakes Region transportation projects:

- Ten Year Plan (2019-2022) Projects
- Ten Year Plan (2023-2028) Projects
- LRPC's 2019 Priority project recommendations (2029-2030)
- Future TYP Projects?

LRPC PROJECTS
IN TYP
(2019-2022)

Route 11 Planning Study

Route 28/North Barnstead Rd

Route 140/Main St – Belmont

Route 104 – Bristol

Route 25/Lake Shore Road – Moultonborough

Route 16 (north of Route 28) – Ossipee

Route 16 (replace 3 bridges) – West Ossipee

Route 16/Route 25/Route 41 – West Ossipee

Highland Street – Plymouth

Route 28 (Main St) – Wolfeboro

LRPC PROJECTS
IN TYP
(2023-2028)

Route 3A (Lake St) bike-ped improvements
Bristol

Route 25 Complete Streets improvements
central village Moultonborough

Route 25 – Sheridan Rd intersection
improvements Moultonborough

LRPC'S 2019 PRIORITY PROJECT RECOMMENDATIONS (2029-2030)

Moultonborough
Route 25/Redding
Lane intersection
safety improvements

Gilmanton Route
107/Route 140
intersection
improvements

Tilton Route 3 (Main
St-School St)
intersection safety
improvements



FUTURE TYP
PROJECTS?

Meredith Route 25 corridor

Meredith Route 3/Route 104 intersection

Tamworth Route 16/Chocorua Lake Rd intersection

New Hampton Route 104 corridor

Tamworth Route 16/Depot Rd intersection

Tilton Route 3 (East Main St)

Plymouth Route 3 corridor

Tilton Route 3 (West Main St)

Route 106 Corridor



OTHER
TRANSPORTATION
FUNDING
OPPORTUNITIES

Transportation Alternatives Program
(TAP)

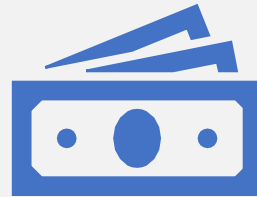
Congestion Mitigation and Air Quality
(CMAQ)

Highway Safety Improvement Program
(HSIP)

TRANSPORTATION ALTERNATIVES PROGRAM (TAP)



Pedestrian and bicycling
infrastructure projects



Funding rounds every 2
years



Includes Safe Routes to
School Planning

EXAMPLES OF TAP FUNDED PROJECTS

- **Moultonborough** 2010 Safe Routes to School Project
- **Franklin** was awarded \$512,000 from TAP for the construction of pedestrian walkway over the trestle bridge
- **Ashland** was awarded funding for sidewalk improvements



CONGESTION MITIGATION AND AIR QUALITY (CMAQ) PROGRAM



2019 funding round is now open

Bike-Ped commuter (not recreational) projects

Public transit

Ride share projects

Congestion reduction projects



They must have air quality benefits

LAND USE AND ENVIRONMENTAL LINKAGES

Transportation
network impacts
water quality

- High priority in the Lakes Region

Transportation
infrastructure
resiliency

- Culvert assessment and stormwater drainage impacts



EXAMPLE OF PARKING LOT RUN OFF

**BIKE AND
PEDESTRIAN
PLANNING**



BENEFITS TO A
MUNICIPALITY

Multimodal transportation
options

Improved Safety

Age friendly development

Enhanced recreation
opportunities



RECENT BIKE-PED PROJECT

Lakes Region Bikeability Assessment

**BIKEABILITY
ASSESSMENT
PROJECT**

Measure Level of Traffic Stress (LTS)



Explore opportunities to coordinate with NH DOT pavement resurfacing projects and TYP projects



Fill gaps in regional connectivity

NH SCENIC AND CULTURAL BYWAY PROGRAM



**Designation of Lakes Region Tour
Scenic Byway (1999)**



**Scenic Byway Advisory
Committee**



**Potential new scenic byway Route
113 and Route 113A**

Holderness-Sandwich-Tamworth

LAKES REGION TOUR SCENIC BYWAY



LAKES REGION TOUR

Length: 97 miles

Towns: Alton, Ashland, Carter Harbor, Gifford, Holderness, Lacinia, Meredith, Mountborrough, New Hampton, Ossipee, Sandwich, Tamworth, Tuftonboro and Wolfeboro

Highlights: Circumnavigate New Hampshire's largest lake - Lake Winnepesaukee - and stop for a mountain hike, a walk through the region's lively downtowns, a visit to a historical museum, or cruise Big Lake on the MS Mount Washington.

Website: <https://www.lakesregion.org>



The Lakes Region Scenic Byway circles Lake Winnepesaukee, the largest and most popular lake in New Hampshire. Beginning in Alton, the route follows NH 88 north through Alton Bay up through Gifford. The western side of the lake shows off exceptional views of the lake and Ossipee Range and offers many different recreational opportunities. Take a hike up to the summit of Mt. Major for wonderful sights of Lake and surrounding mountain ranges or stop in at Ellacoya State Park for a picnic or a swim.



FREIGHT PLANNING



NH's first freight plan
published in January 2019

LRPC participated in
gathering regional
information

Highway system projected to
remain NH's dominate freight
transportation mode

\$4 million/yr for freight
improvements



New Hampshire
DOT
Department of Transportation

STATEWIDE
**FREIGHT
PLAN**

FINAL REPORT
JANUARY 2019

COMPONENTS TO NH
FREIGHT PLAN

Highway System

Rail System

Airport System

Marine System

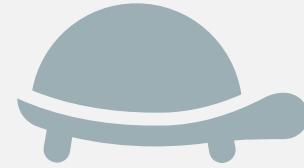
LAKES REGION – STATEWIDE FREIGHT PLAN



Truck Freight Bottleneck Locations (Medium Priority)

Route 3 – Laconia – Franklin

Route 106 – Laconia – Belmont



High Delay Corridors

Route 3 – Laconia to I-93

Route 106 – Laconia to I-393

LAKES REGION – STATEWIDE FREIGHT PLAN

PROPOSED CRITICAL RURAL FREIGHT CORRIDORS

Route 3 – Laconia – Franklin

Route 3 Business – Laconia

Route 106 – Laconia

Route 25 – Meredith – Moultonborough

Route 3 – Meredith (Route 25 – Route 106)

Route 16 – Ossipee (Route 25 – Route 41)

PRESENTATION OVERVIEW



Policy and Planning



Public Involvement and
Coordination



Transportation Planning
Assistance and Support

TRANSPORTATION
PLANNING
ASSISTANCE AND
SUPPORT



Data Collection



Culvert Inventories



Road Surface Management System (RSMS)



Geographic Information Systems (GIS) Mapping



Mobile Wireless Mapping Project



Regional Transit Support



Commute Smart NH

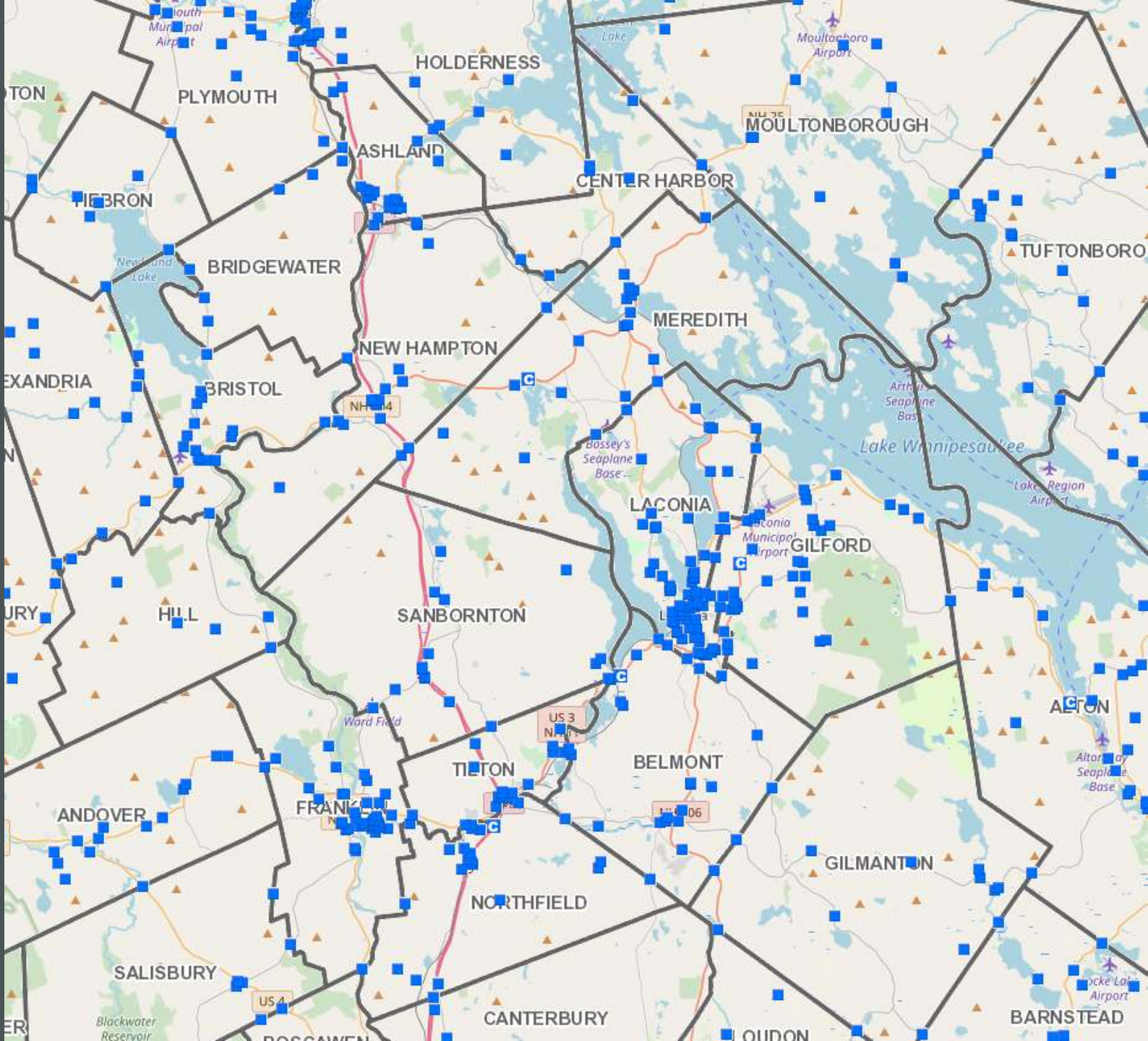
DATA COLLECTION

Traffic counts

Bicycle and
pedestrian counts

Crash data

TRAFFIC COUNTS



BENEFITS TO A MUNICIPALITY

Guidance for transportation decision making

LRPC performs 150-200 traffic counts a year using a schedule developed by the DOT

NH DOT maintains a Transportation Data Management System, a “web-based interactive map”

Quick Search Advanced Search Map Search Tools

TCDS Quick Search

County	<input type="text" value="Select County"/>
Community	<input type="text" value="Select Community"/>
Located On (Road):	<input type="text" value="Select On Road"/>
Location ID	<input type="text" value="Select Location ID"/>
Count Year	<input type="text" value=""/>

Station Data

Station Type	Continuous	Short	WIM
Total	68	5,630	5
AADT	68	5,504	5
Volume	68	5,505	5
Class	11	397	5
Speed	0	46	0
Gap	0	0	0
WIM	5	0	5

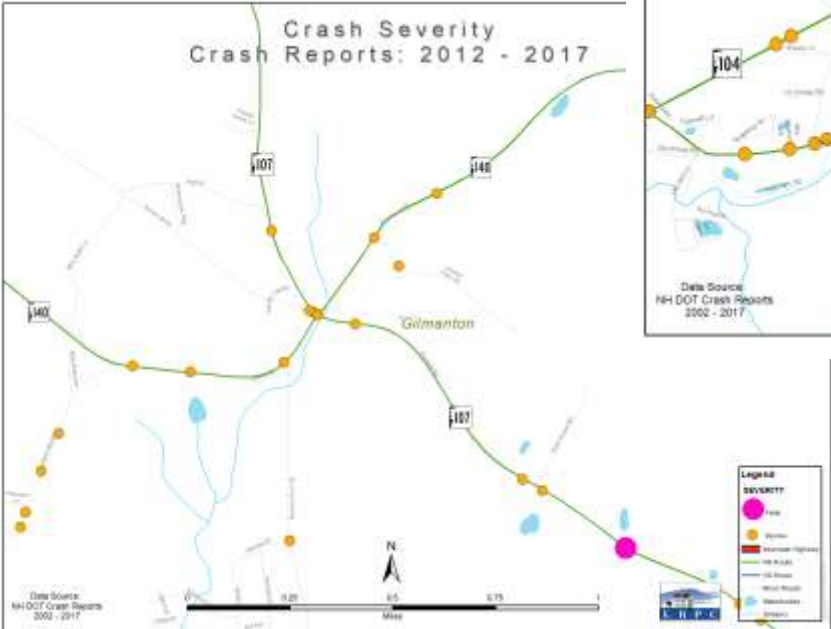
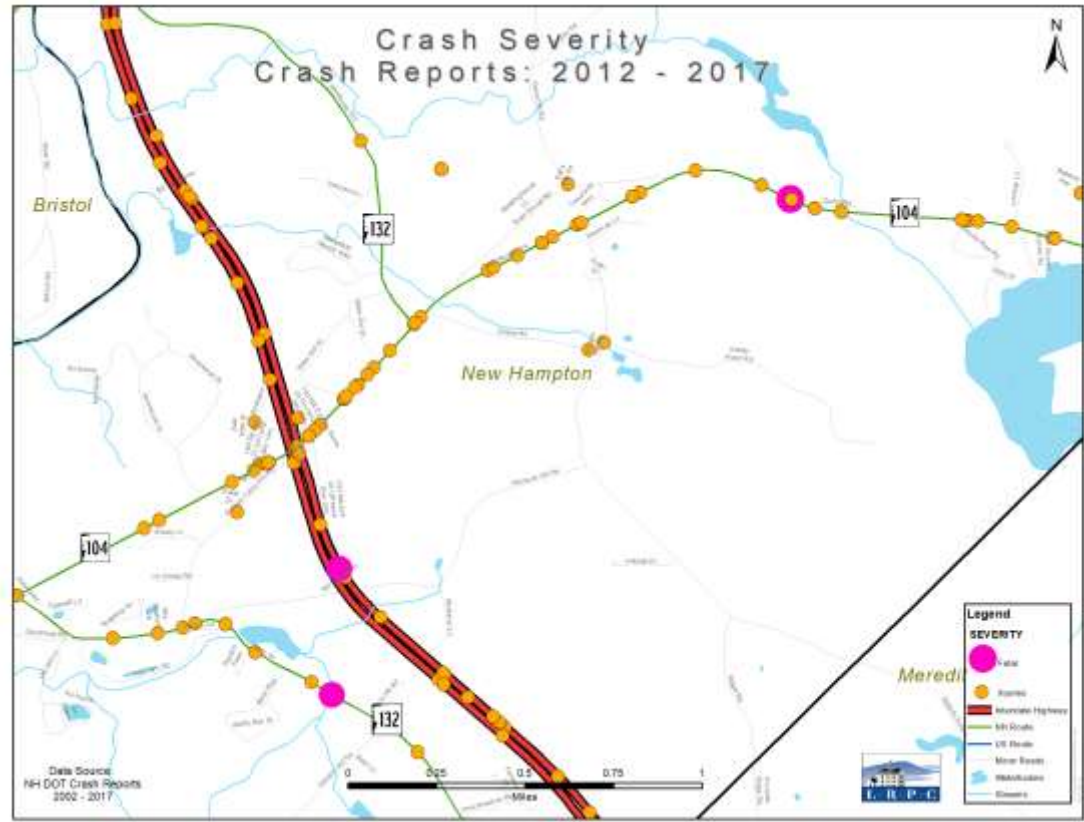
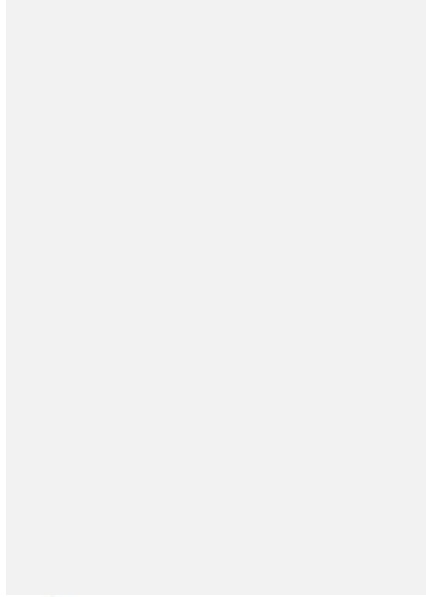
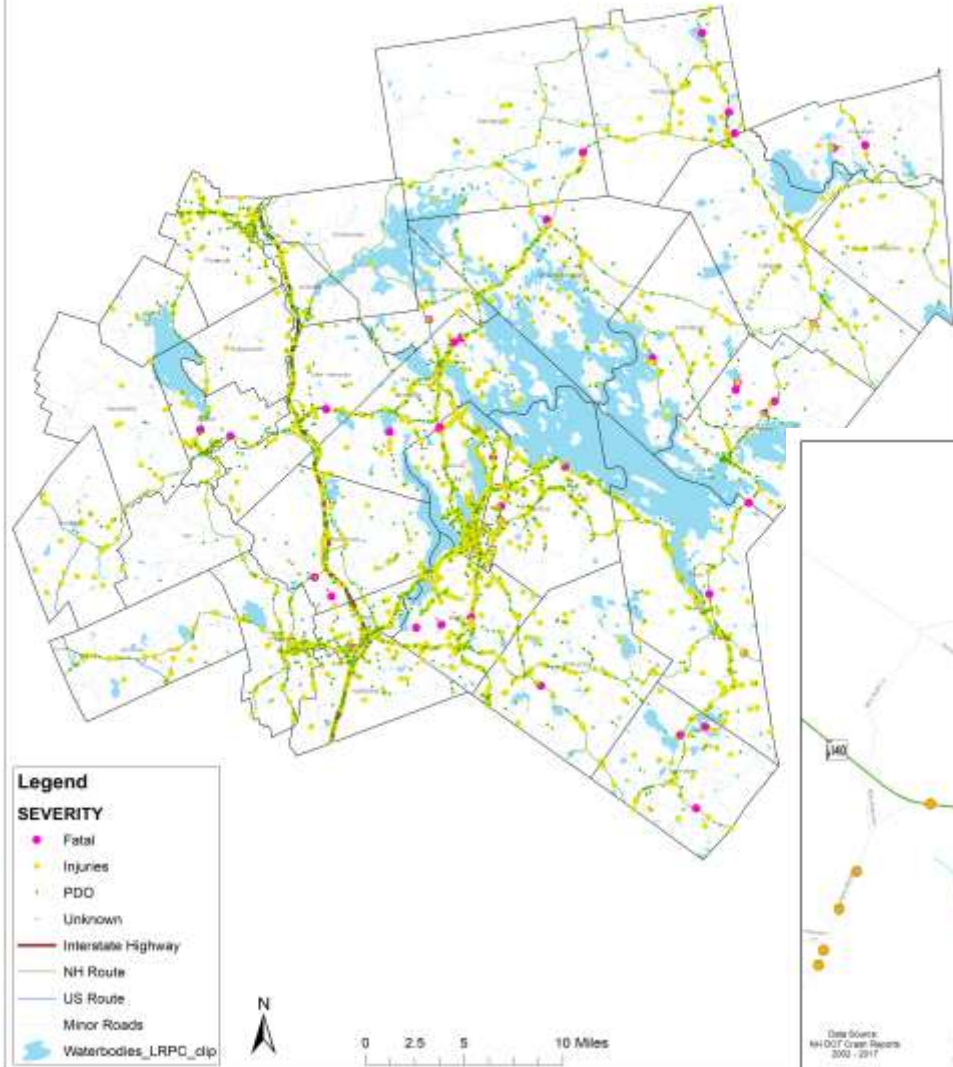
Percent of Data by Type

Station Type	Percent
AADT	~10%
Volume	~80%
Class	~10%
Speed	~0%
Gap	~0%
WIM	~0%

Traffic Volume Index and Growth Rate

CRASH DATA

2012-2017 Crash Severity Lakes Region Planning Commission





CULVERT INVENTORIES

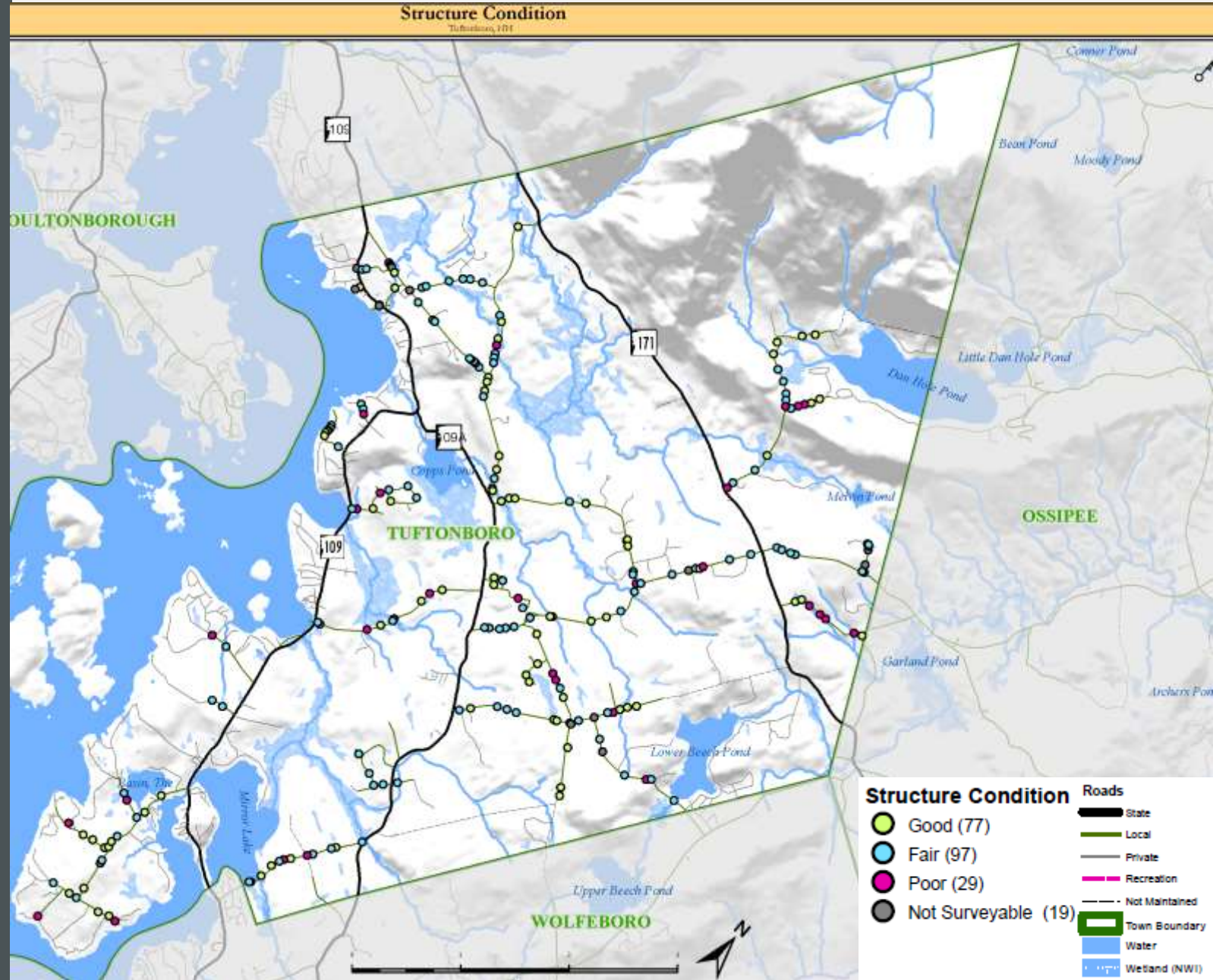
BENEFITS TO A MUNICIPALITY

- ❑ Location and condition of culverts are mapped
- ❑ Better awareness of infrastructure and maintenance needs
- ❑ Improves local CIP and budgeting
- ❑ Can prevent dangerous/expensive road washouts



MOST RECENT CULVERT ASSESSMENTS

- Tuftonboro
- New Hampton
- Ashland
- Gilford
- Laconia



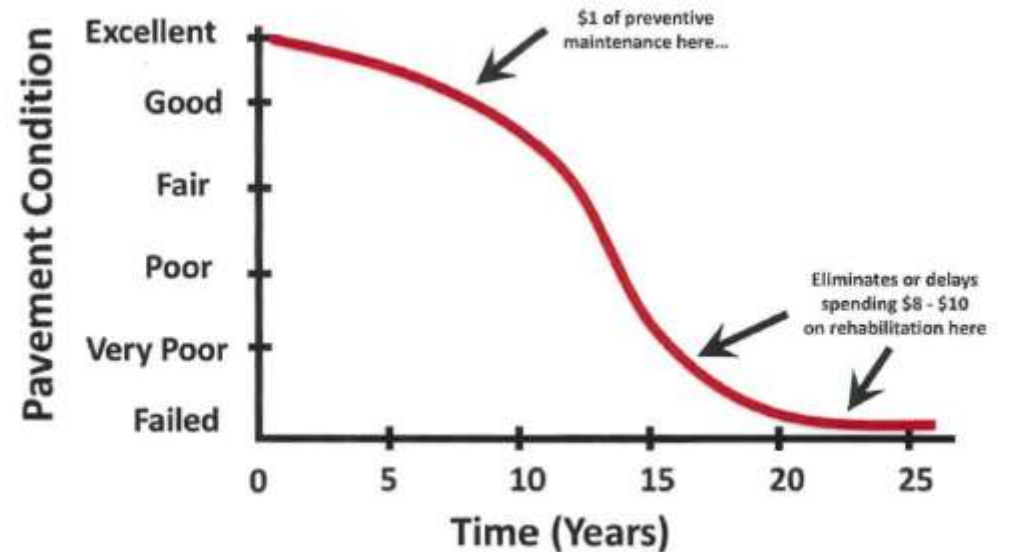


ROAD SURFACE MANAGEMENT SYSTEM (RSMS)

BENEFITS TO A MUNICIPALITY

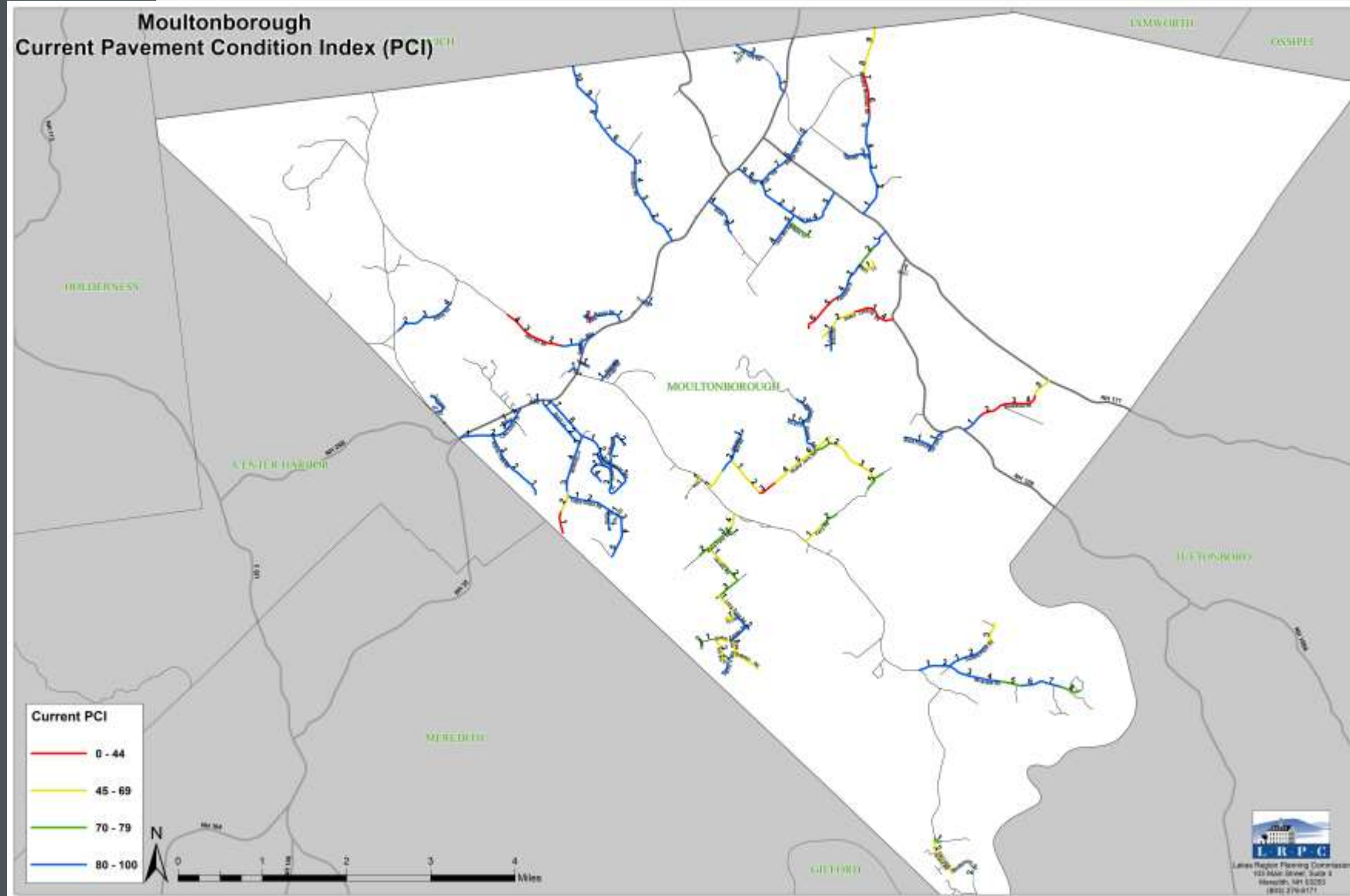
- ❑ Mileage, values, and conditions of roads are known
- ❑ Better awareness of infrastructure and maintenance needs
- ❑ Improve planning and local budgeting
- ❑ Can predict how the roads will be in 10 years

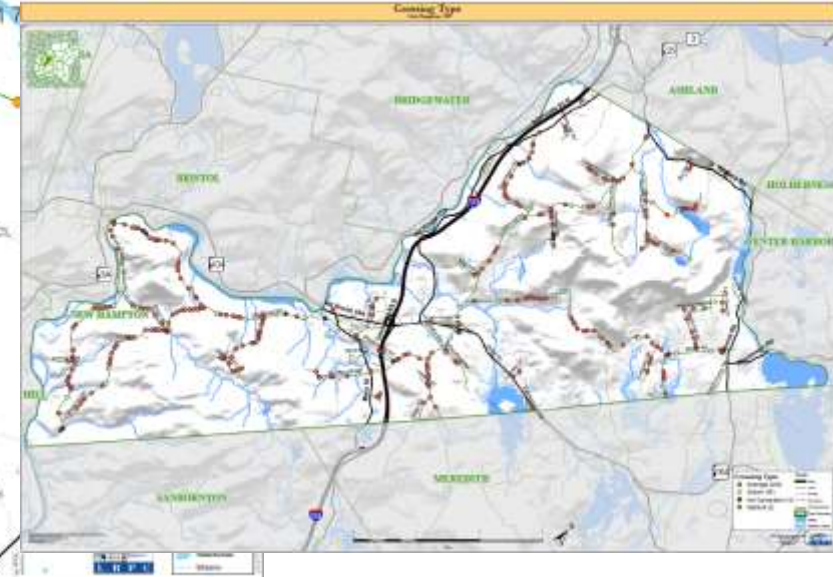
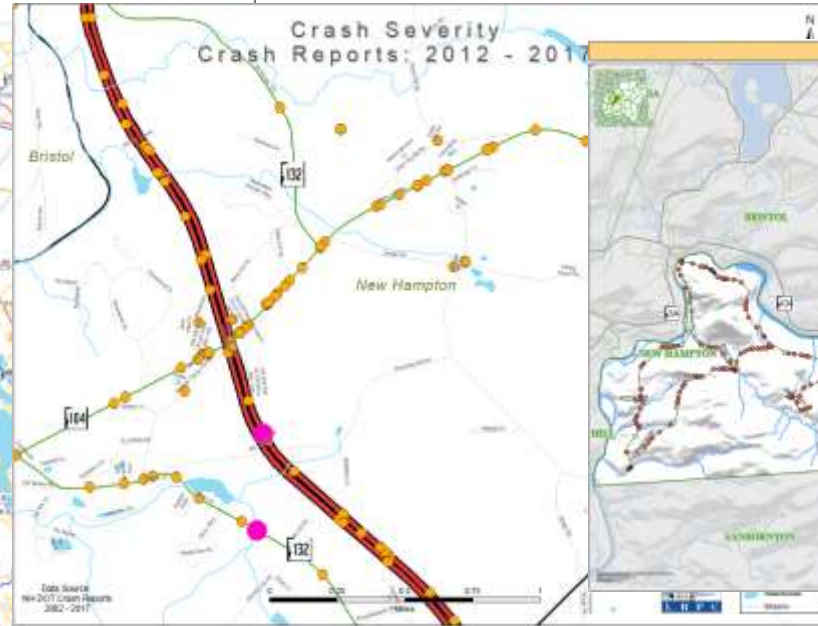
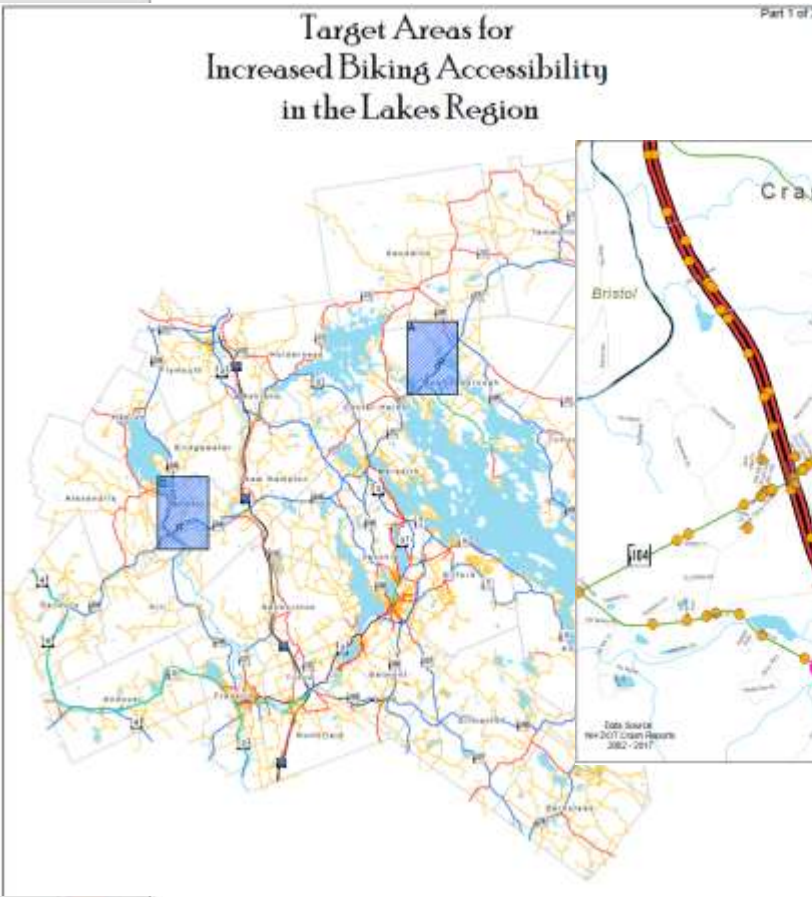
Life of Pavement



MOST RECENT RSMS PROJECTS

- Tuftonboro
- Moultonborough
- Ashland





GEOGRAPHIC INFORMATION SYSTEMS (GIS) MAPPING

verizon^v



AT&T

T · · Mobile[®]

MOBILE WIRELESS MAPPING PROJECT

CELL DATA COLLECTION



Utilize an application on 3 cell phones, one for each carrier



Volunteers signed up to participate in data collection

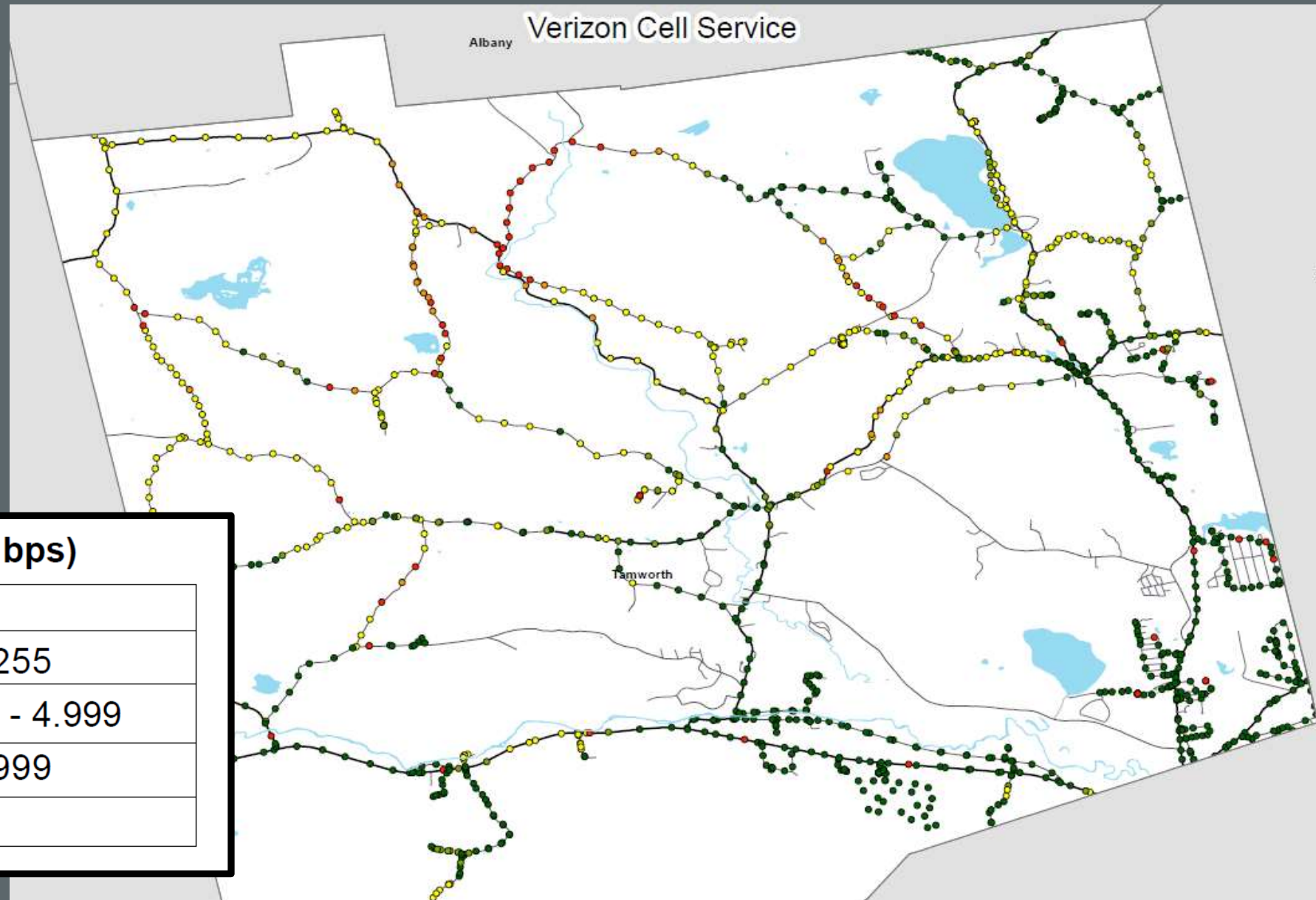


Run the application, then drive state and municipal roads



Map the results based on download speeds

EXAMPLE OF CELL SERVICE MAPPING



Download Speeds (Mbps)

No service, text, voice, and data not available	●	0
Spotty service, text may be possible, voice not likely	●	0 - 0.255
OK service, text and email likely, web browsing may be possible	●	0.256 - 4.999
Good service, voice, text, and web browsing likely, streaming may be possible	●	5 - 9.999
Great service, voice, text, and video streaming likely	●	10+



REGIONAL TRANSIT SUPPORT

LRPC works with Regional Coordinating Councils

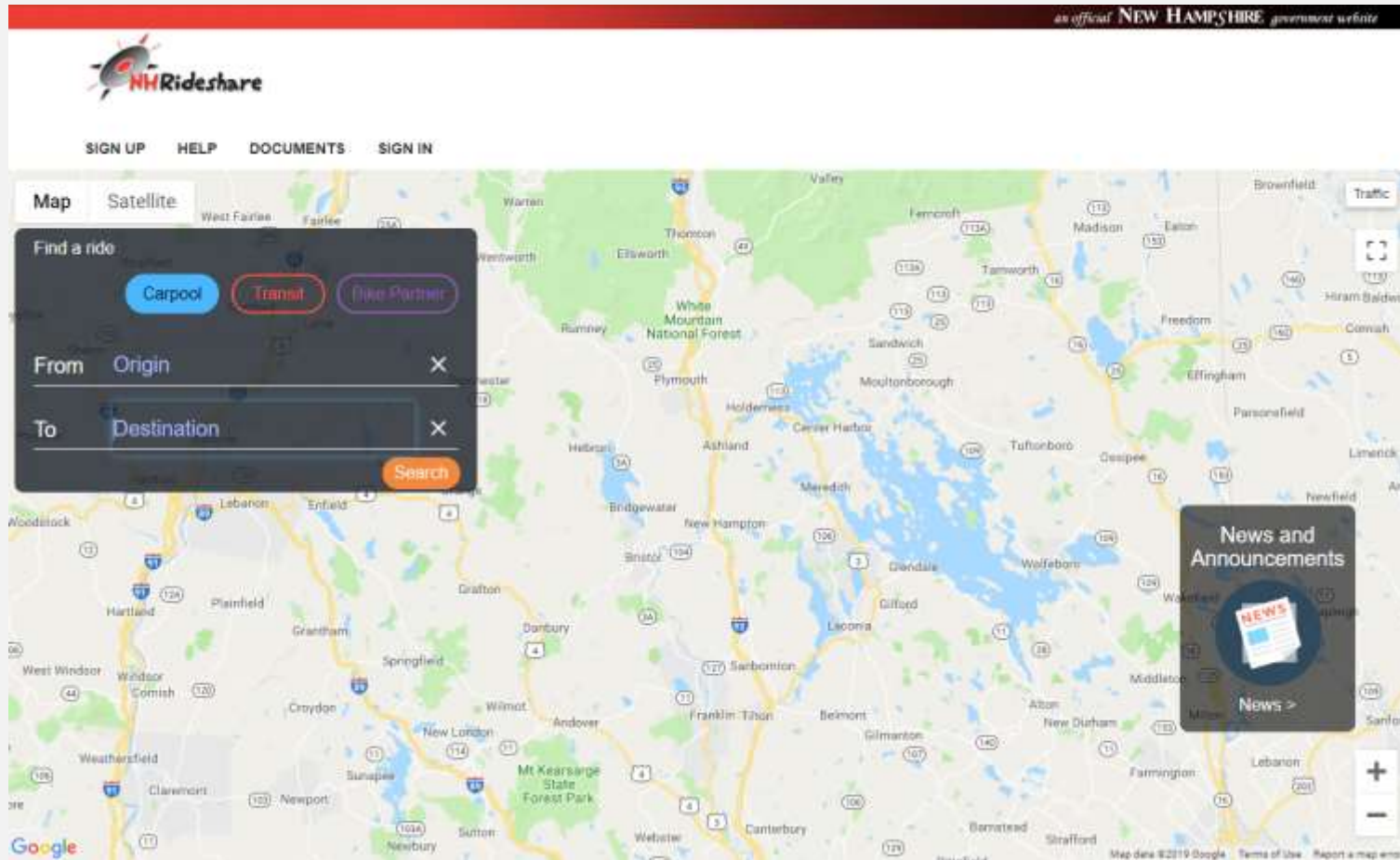
- Mid-State RCC
- Carroll County RCC
- NH Ride Share



COMMUTE**SMART**

NEW HAMPSHIRE

STATE-WIDE INITIATIVE TO ENCOURAGE AND ASSIST PEOPLE
TO CHOOSE SUSTAINABLE TRANSPORTATION OPTIONS



NH RIDE SHARE

- Easy search function to find carpool matches
- Log your commute smart trips
- Companies can participate in state-wide challenges
- Reduces traffic and the need for more parking spaces

JUNE CHALLENGE

- ❑ **Easy to sign up and join** other businesses and employers in a statewide challenge
- ❑ **Friendly competition** with other businesses
- ❑ **Win awards and prizes** for most sustainable trips logged and most social media buzz
- ❑ **Great for marketing** your business as sustainable and environmentally friendly
- ❑ info@commutesmartnh.org



SAVE THE DATE
June 1-30, 2019



Mark your calendars, and start drafting your game plans for June 1, the start of the CommuteSMART New Hampshire Statewide Commuter Challenge. We can't wait to see who will join the competition!



QUESTIONS?