

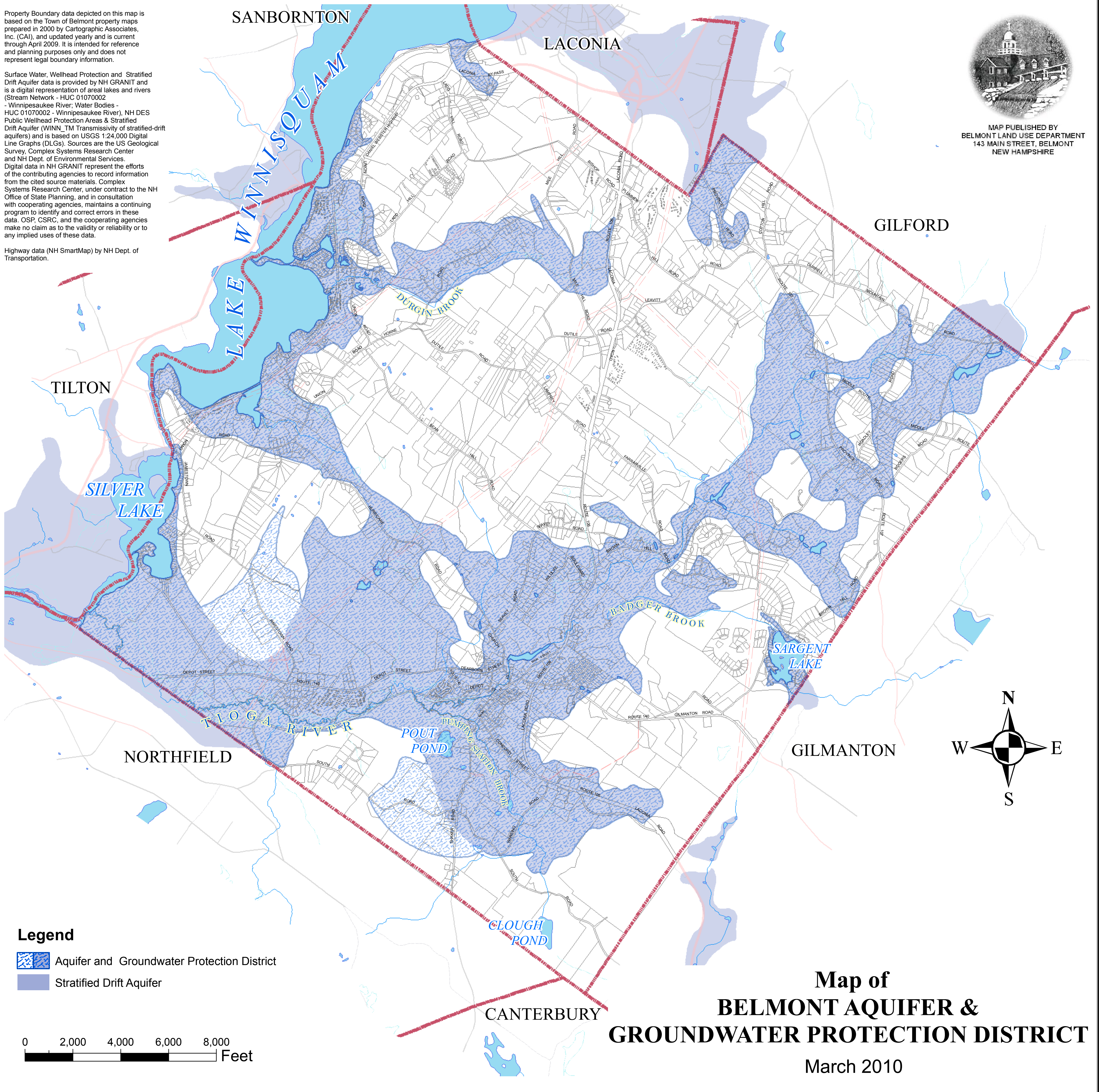
Property Boundary data depicted on this map is based on the Town of Belmont property maps prepared in 2000 by Cartographic Associates, Inc. (CAI), and updated yearly and is current through April 2009. It is intended for reference and planning purposes only and does not represent legal boundary information.

Surface Water, Wellhead Protection and Stratified Drift Aquifer data is provided by NH GRANIT and is a digital representation of areal lakes and rivers (Stream Network - HUC 01070002 - Winnepesaukee River; Water Bodies - HUC 01070002 - Winnepesaukee River), NH DES Public Wellhead Protection Areas & Stratified Drift Aquifer (WINN\_TM Transmissivity of stratified-drift aquifers) and is based on USGS 1:24,000 Digital Line Graphs (DLGs). Sources are the US Geological Survey, Complex Systems Research Center and NH Dept. of Environmental Services. Digital data in NH GRANIT represent the efforts of the contributing agencies to record information from the cited source materials. Complex Systems Research Center, under contract to the NH Office of State Planning, and in consultation with cooperating agencies, maintains a continuing program to identify and correct errors in these data. OSP, CSRC, and the cooperating agencies make no claim as to the validity or reliability or to any implied uses of these data.



Highway data (NH SmartMap) by NH Dept. of Transportation.



MAP PUBLISHED BY  
BELMONT LAND USE DEPARTMENT  
143 MAIN STREET, BELMONT  
NEW HAMPSHIRE



**Legend**

-  Aquifer and Groundwater Protection District
-  Stratified Drift Aquifer

**Map of  
BELMONT AQUIFER &  
GROUNDWATER PROTECTION DISTRICT**

March 2010