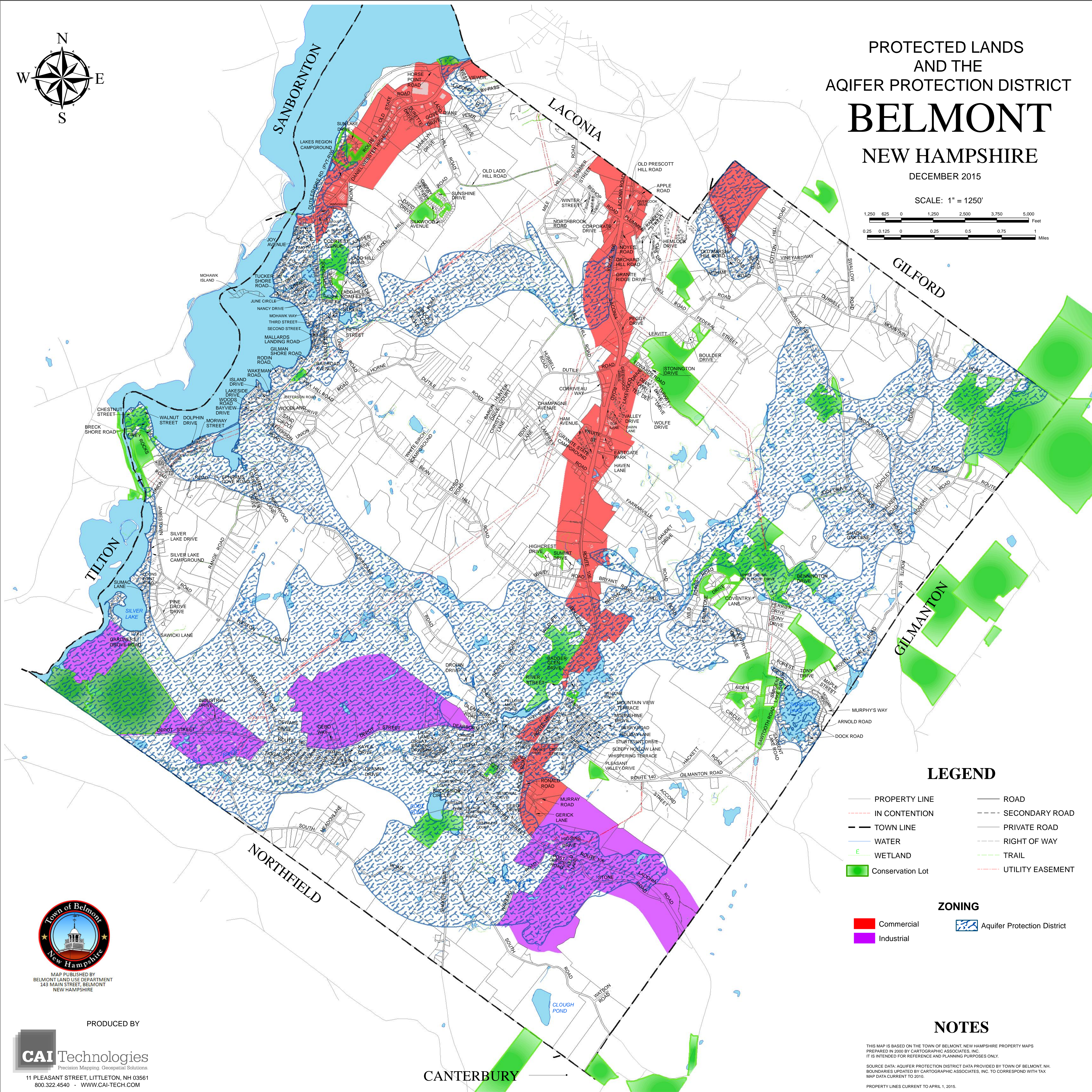


PROTECTED LANDS
AND THE
AQIFER PROTECTION DISTRICT
BELMONT
NEW HAMPSHIRE

DECEMBER 2015

SCALE: 1" = 1250'



LEGEND

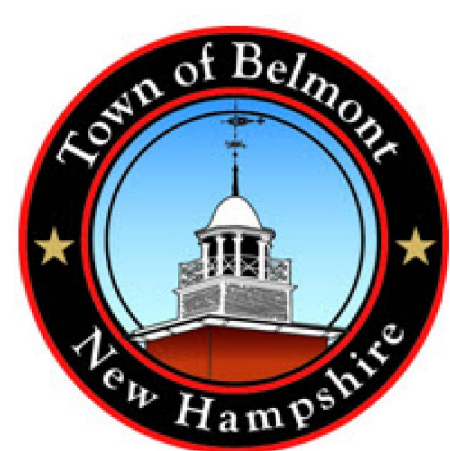
- | | |
|---------------------|------------------------|
| — PROPERTY LINE | — ROAD |
| - - - IN CONTENTION | - - - SECONDARY ROAD |
| - - - TOWN LINE | — PRIVATE ROAD |
| — WATER | - - - RIGHT OF WAY |
| — WETLAND | — TRAIL |
| ■ Conservation Lot | - - - UTILITY EASEMENT |

ZONING

- | | |
|--------------|-------------------------------|
| ■ Commercial | ■ Aquifer Protection District |
| ■ Industrial | |

NOTES

THIS MAP IS BASED ON THE TOWN OF BELMONT, NEW HAMPSHIRE PROPERTY MAPS PREPARED IN 2000 BY CARTOGRAPHIC ASSOCIATES, INC. IT IS INTENDED FOR REFERENCE AND PLANNING PURPOSES ONLY.
SOURCE DATA: AQIFER PROTECTION DISTRICT DATA PROVIDED BY TOWN OF BELMONT, NH. BOUNDARIES UPDATED BY CARTOGRAPHIC ASSOCIATES, INC. TO CORRESPOND WITH TAX MAP DATA CURRENT TO 2010.
PROPERTY LINES CURRENT TO APRIL 1, 2015.



MAP PUBLISHED BY
BELMONT LAND USE DEPARTMENT
143 MAIN STREET, BELMONT
NEW HAMPSHIRE

PRODUCED BY

CAI Technologies
Precision Mapping. Geospatial Solutions.

11 PLEASANT STREET, LITTLETON, NH 03561
800.322.4540 • WWW.CAI-TECH.COM