

HOW TO ACT AROUND CATTLE
 Do
 • Keep dogs close and under complete control.
 • Continue to move past cattle rather than staying in their presence.
 Step slowly into their flight zone only if necessary to move them.
 • Move slowly around cattle and use a normal speaking voice.
 • If an animal appears to be uncomfortable or agitated, step back.
 • Approach from the front or side; avoid the blind spot behind them.
 • If you see cows that are clearly injured, notify town personnel so they can contact the livestock owner. Do not approach an injured animal.
 Don't
 • Don't physically intervene if a dog is chased by or interacting with cattle.
 • Don't approach cattle from behind.
 • Don't get between a cow and her calf.
 • Don't make quick movements, or flap your arms.
 • Don't shout or make loud noises.
 • Don't "rescue" or touch calves that seem separated from their mother.
 • Don't feed cattle.

Trail Etiquette & Safety Guidelines

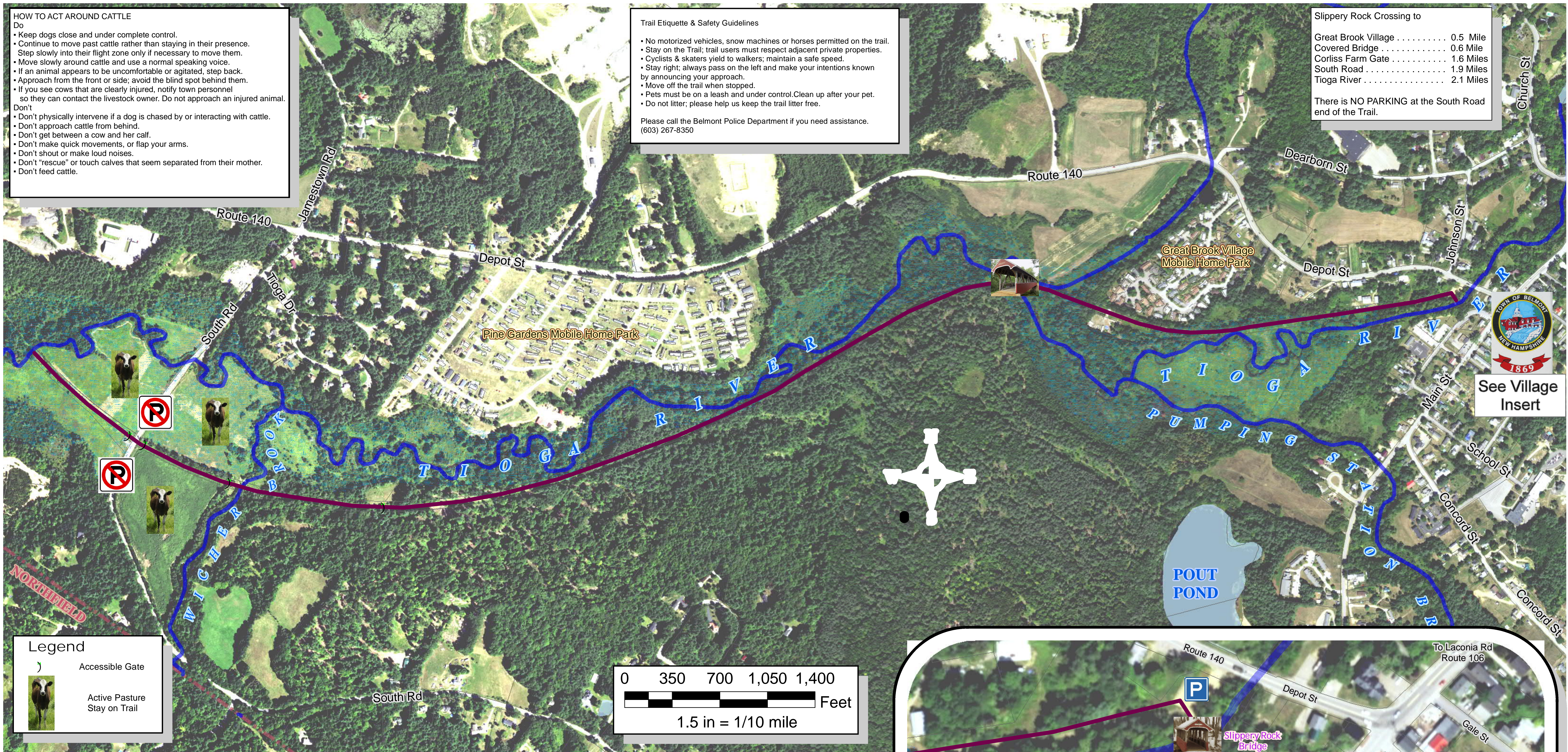
- No motorized vehicles, snow machines or horses permitted on the trail.
- Stay on the Trail; trail users must respect adjacent private properties.
- Cyclists & skaters yield to walkers; maintain a safe speed.
- Stay right; always pass on the left and make your intentions known by announcing your approach.
- Move off the trail when stopped.
- Pets must be on a leash and under control. Clean up after your pet.
- Do not litter; please help us keep the trail litter free.

Please call the Belmont Police Department if you need assistance.
 (603) 267-8350

Slippery Rock Crossing to

Great Brook Village	0.5 Mile
Covered Bridge	0.6 Mile
Corliss Farm Gate	1.6 Miles
South Road	1.9 Miles
Tioga River	2.1 Miles

There is NO PARKING at the South Road end of the Trail.



VILLAGE SPUR RAIL TRAIL BELMONT, NEW HAMPSHIRE

PLAN PUBLISHED BY
 LAND USE DEPARTMENT
 143 MAIN STREET, BELMONT
 NEW HAMPSHIRE

2016 NAIP Aerial
 SEPTEMBER 2018

