

TOWN OF BELMONT NEW HAMPSHIRE



Annual Report 2008

Celebrating Winter

Dedication In Memory of



Kier T. Slater
May 10, 1974 – February 9, 2008

This year's Town Report in part is dedicated in memory of Officer Kier T. Slater who passed away on February 9, 2008 of a sudden illness. Officer Slater had been with the Belmont Police Department since 2005 and is remembered for his humor, tenacity, dedication, commitment to his family, friends and the community.

We would also like to dedicate this year's Town Report to former Town Clerk/Tax Collector Carol Lacasse who retired in May 2008. Carol had worked for the Town for 21 years and served as Town Clerk/Tax Collector for the past 9 years. We wish Carol well in her retirement.

Belmont Board of Selectmen

Ronald Cormier, Chairman
Reginald Caldwell, Vice Chairman
Jon Pike

Belmont, New Hampshire Annual Town Report 2008

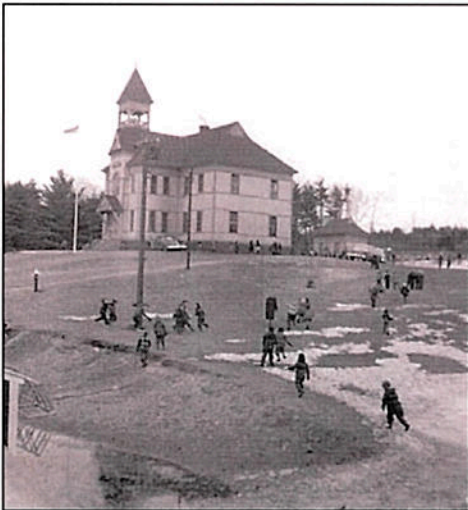
Celebrating Winter

The four seasons help define our New Hampshire town. Just as the weather affects livelihood of a farm, work of the 21st century can be stopped by a storm, when Internet and other communications connectivity shut down. And no matter how strong the winter winds blow – roads need plowing, and those snow days from school will be made up later.

This coldest season offers Belmont residents an array of recreational and outdoor choices; whether making tracks in the snow, fishing for the elusive Derby winner, skiing and snowboarding, ice-skating on local ponds, or helping with the annual bird count. For “lower impact” activities, there is civic participation and local elections, tending the woodstove, readying for maple sugar time, and watching the landscape melt into spring.

Belmont’s Heritage Commission and Historical Society photo archives help us recall other local winters from the early 1900s - along with some of today’s views of that notable, longest season.

Front Cover Photos (clockwise): Cornerstone Equestrian Center; Smith Orchard; newly-purchased community safety apparatus, landmark fence on Depot Street.



Gale School winter recess, 1952



Old Main Street in early 1900s

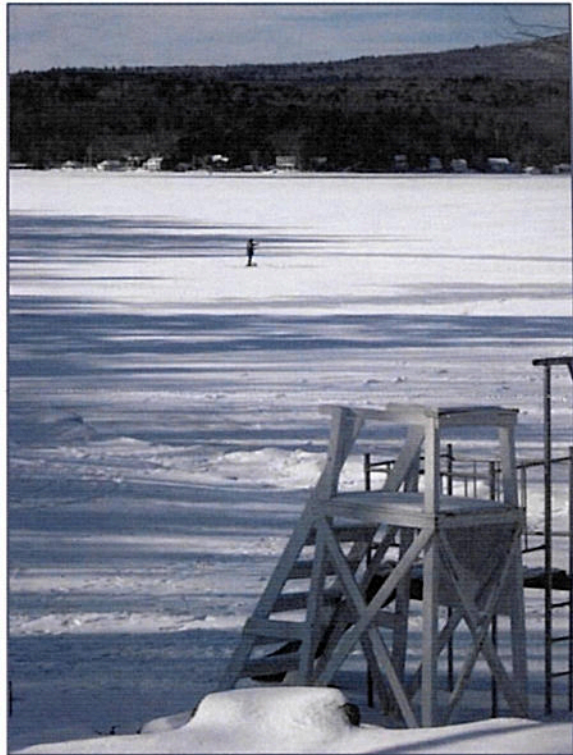


*Piper Farm barn
(Church Street, early 1900s)*

Photographs courtesy of Belmont Historical Society, Linda Frawley, Brenda Paquette, Dr. Jim Pilliod, and Wallace Rhodes.



Photos: Tracks at the Belmont Town Beach;
Ice-fisherman on Lake Winnisquam



Belmont's historic bandstand celebrates its Centennial Year in 2009

This beautiful Victorian structure was featured as one of four state sites in the 2008 "This Place Matters" campaign of the National Trust for Historic Places. Members of the Belmont Rotary and other citizen volunteers decorated the bandstand for the 2008-2009 winter season.