



Issue 2023- 10

[Search the Catalog and
Check Your Account](#)



Giving Thanks

Hello Laura,

It doesn't seem possible that we're at "that time of year" again, so soon. But as I look back over the year, I am extremely grateful for the support I receive from the community and thankful that I have the best job in the world!

I reread what I wrote last November, and it still holds true.

I give thanks to a dedicated and enthusiastic staff, that bring their A-game every day and make everyone who walks in our doors feel welcome;

thanks to the Board of Trustees, who support and encourage me and never shy away from advocating for the library;

thanks to the Friends, the cheerleaders and fundraisers for many wonderful library "extras!"

thanks to those of you who support the Friends with your donations and purchases of meals at the

summer Snack Shack and bake sales;

thanks to the community for recognizing and supporting a resource available to all, regardless of politics or finances;

and thanks to all our patrons, who recognize the great value of the library by checking out books, magazines and videos, using our wi-fi, and attending programs!

Have a good day,

Laura

Laura Clerkin
Library Director
lclerkin@bethlehemlibrary.org

HAPPENING THIS MONTH



**Mondays in
November
4-5:30pm**

What is NaNoWriMo?

National Novel Writing Month is a national organization whose annual event encourages participants' attempt to write a 50,000-word manuscript during the month of November. This is less than 2,000 words per day.

NaNoWriMo's Come Write In program connects libraries, bookstores, and other neighborhood spaces with their local NaNoWriMo to build vibrant writing communities. Write In spaces let writers know they are welcome.

There is no agenda for our writing sessions. Coming in late or leaving early is okay. The library provides quiet, dedicated space to write. Or if someone would like to discuss writing with others, staff are happy to facilitate discussion, as writing is often a lonely pursuit.

Family Board Game Night

Monday, November 6th 5:30-6:30pm

We'll have a variety of board game options.
Best for families with children ages 3-12.



A Musical Salute to Veterans Thursday, November 9th 6pm

Join us to hear a variety of military music, performed by Grafton County's Devon Landis. Devon served in the US Air Force as a music librarian and played in the USAF Band.

She will perform songs and share some history of the music that honors our country and those who defend it. Singing along is encouraged!



Kids Programs Every Week!

Mondays 2:30-3:30 STEAM Club

Tuesdays 10:30-11 Preschool Story Time

Wednesdays 2:30-3:30 Arts & Crafts Club

[Click here for details](#)

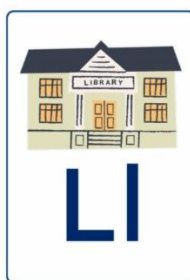
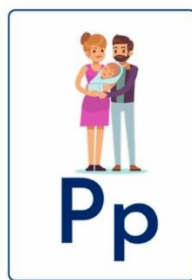
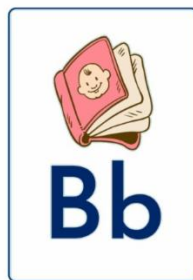
More Programs

Fridays 10:15-11:30am **Let's Talk, Adult Discussion Group**

Tuesday November 28th 11am-3pm **Stay & Play: Barns**

Thursday November 30th 6pm **Trivia Night**





Preschool Tidings

From Bethlehem Public Library

Preschooler Newsletter

Do you have a little one at home? A grandchild perhaps? Sign up for our new quarterly newsletter with information geared toward ages 2-5. We'll share child development news, new books, and more.

[Click here to sign up!](#)

abibliophobia

uh-bib-ih-uh-to-bee-yuh
Noun.

The fear of running
out of things to read.

~ aestas book blog ~

The holidays are fast approaching. Don't be caught with nothing to read, or you might have to do something drastic - like clean!

Holiday closures:

Saturday, November 11th

Thursday, November 23rd - Saturday, November 25th

Monday, December 25th

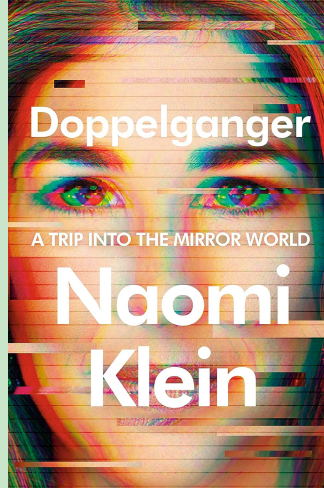
Monday, January 1st

New Releases!

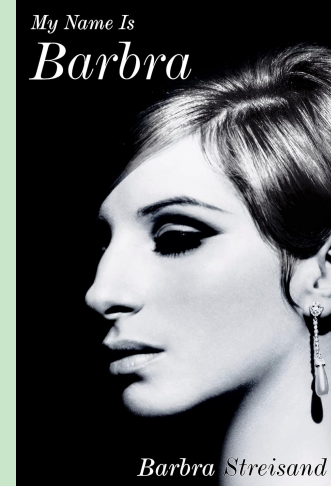
[Click on cover for more information , or to reserve](#)



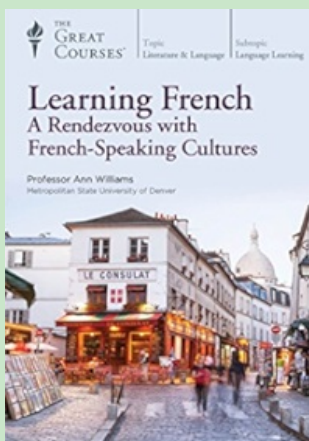
Seven friends, one eccentric billionaire, and an all-expenses-paid reunion on a private island: with no technology allowed, it'll be a weekend to remember--for those who make it out alive.



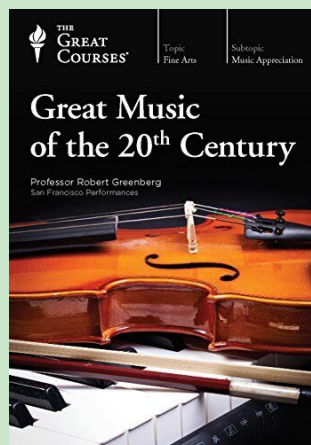
What if you woke up one morning and found you'd acquired another self--a double who was almost you and yet not you at all?



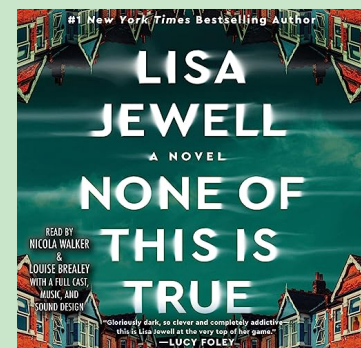
The long-awaited memoir by the superstar of stage, screen, recordings, and television



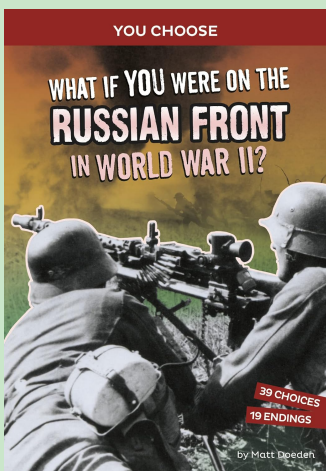
Learn French with 30 step-by-step lessons on DVD.



Discover great composers in this audio series.



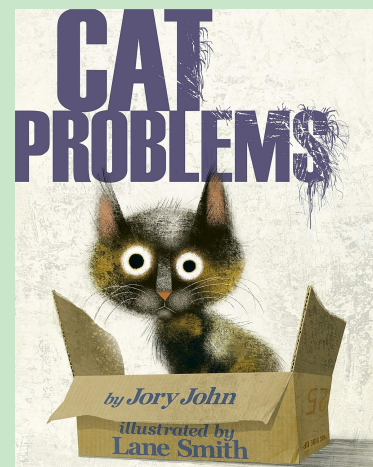
A new psychological thriller about a woman who finds herself the subject of her own popular true crime podcast. On audio CDs and in print.



Part of the You Choose series about WWII



An interactive treasure adventure for kids!



New from the author of The Cool Bean. Vote for this book, and others,

Coming in December



6th Annual Gingerbread House Contest

Your homemade creations are due at the library
Friday, December 1st.

[Click to see rules and details](#) (scroll to bottom)

Prizes:

\$100 gift certificate to Little Village Toy & Books

\$25 gift certificate to Legacy Books

Christmas in Bethlehem ***Saturday, December 2nd***



Bethlehem Public Library

Celebrating 10 years 2013-2023

10th Anniversary Open House 9-11am

Help us celebrate 10 years in our new library building! Stop by and see that we're more than books!
We'll have displays, door prizes, a raffle basket, and refreshments.



Children's Christmas Party 11am-1pm

Hosted by the Friends of the Bethlehem Public Library
They'll be crafts, cookie decorating, stories by Mrs. Claus, and general merriment!



Bethlehem Public Library

2245 Main Street
Bethlehem, NH 03574
603-869-2409

Email Us

Bethlehem Public Library | PO Box 250, 2245 Main Street, Bethlehem, NH 03574
www.bethlehemlibrary.org

[Unsubscribe 1clerkin@bethlehemlibrary.org](mailto:Unsubscribe1clerkin@bethlehemlibrary.org)

[Update Profile](#) | [Constant Contact Data Notice](#)

Sent by 1clerkin@bethlehemlibrary.org powered by



Try email marketing for free today!