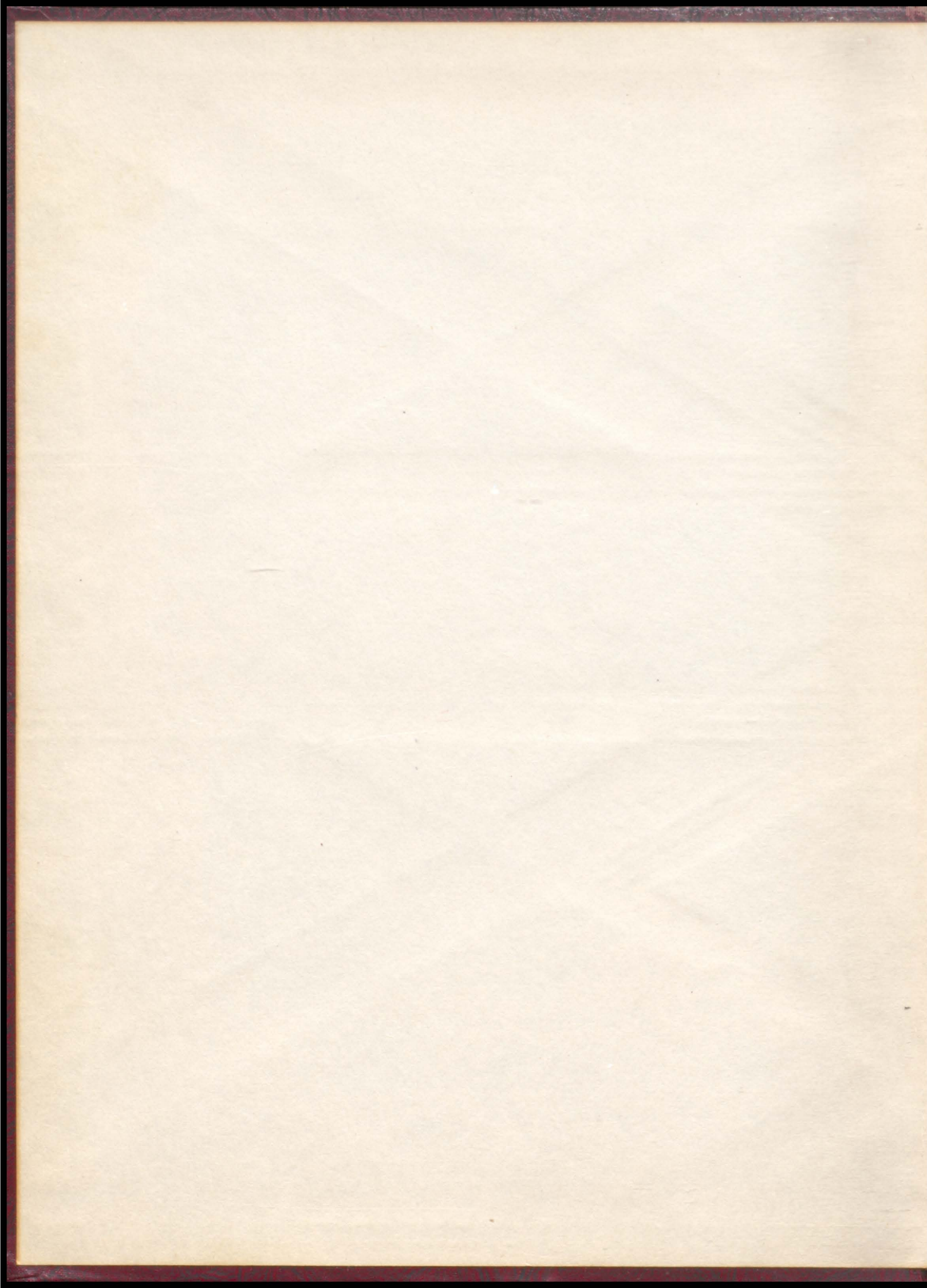
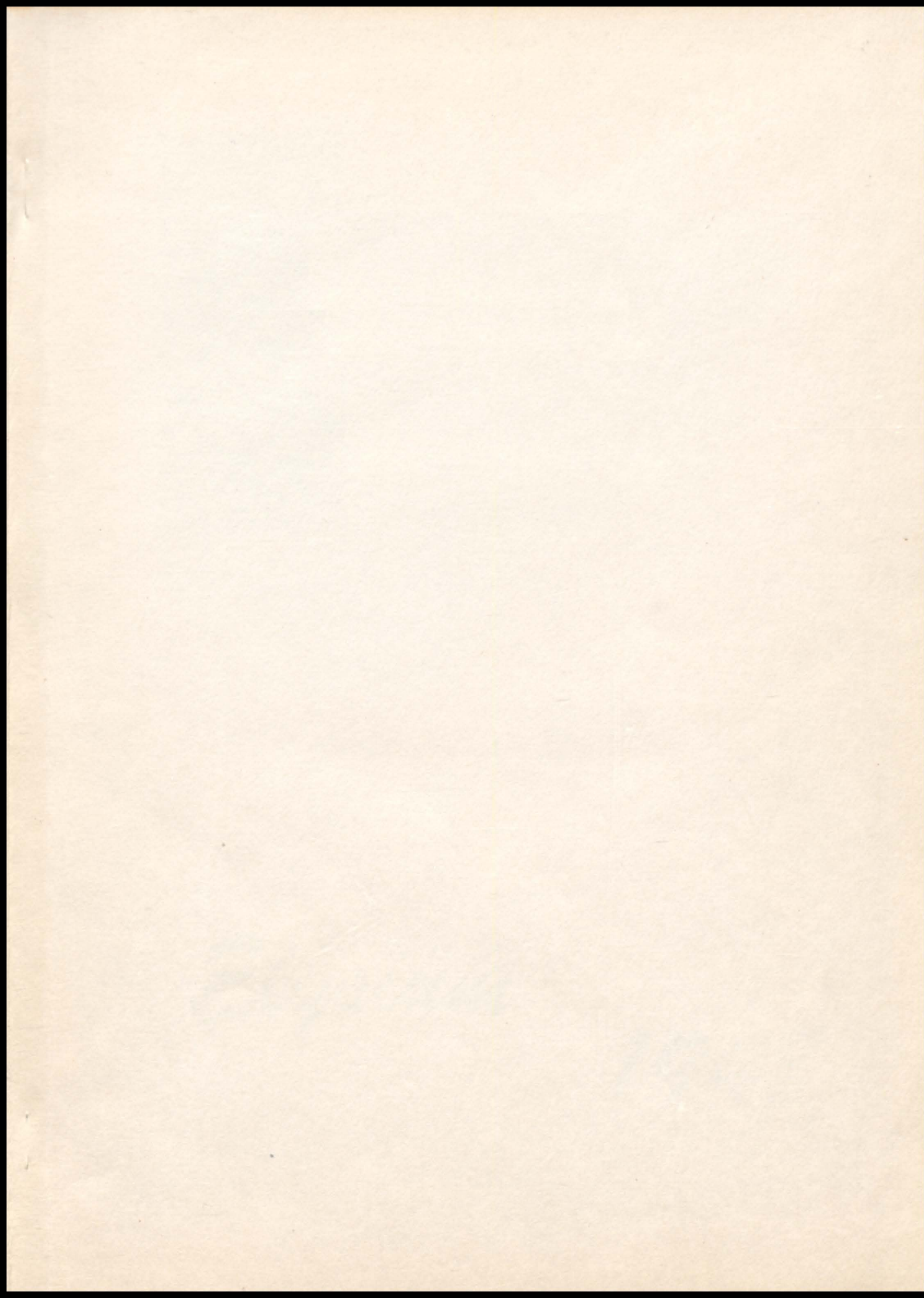


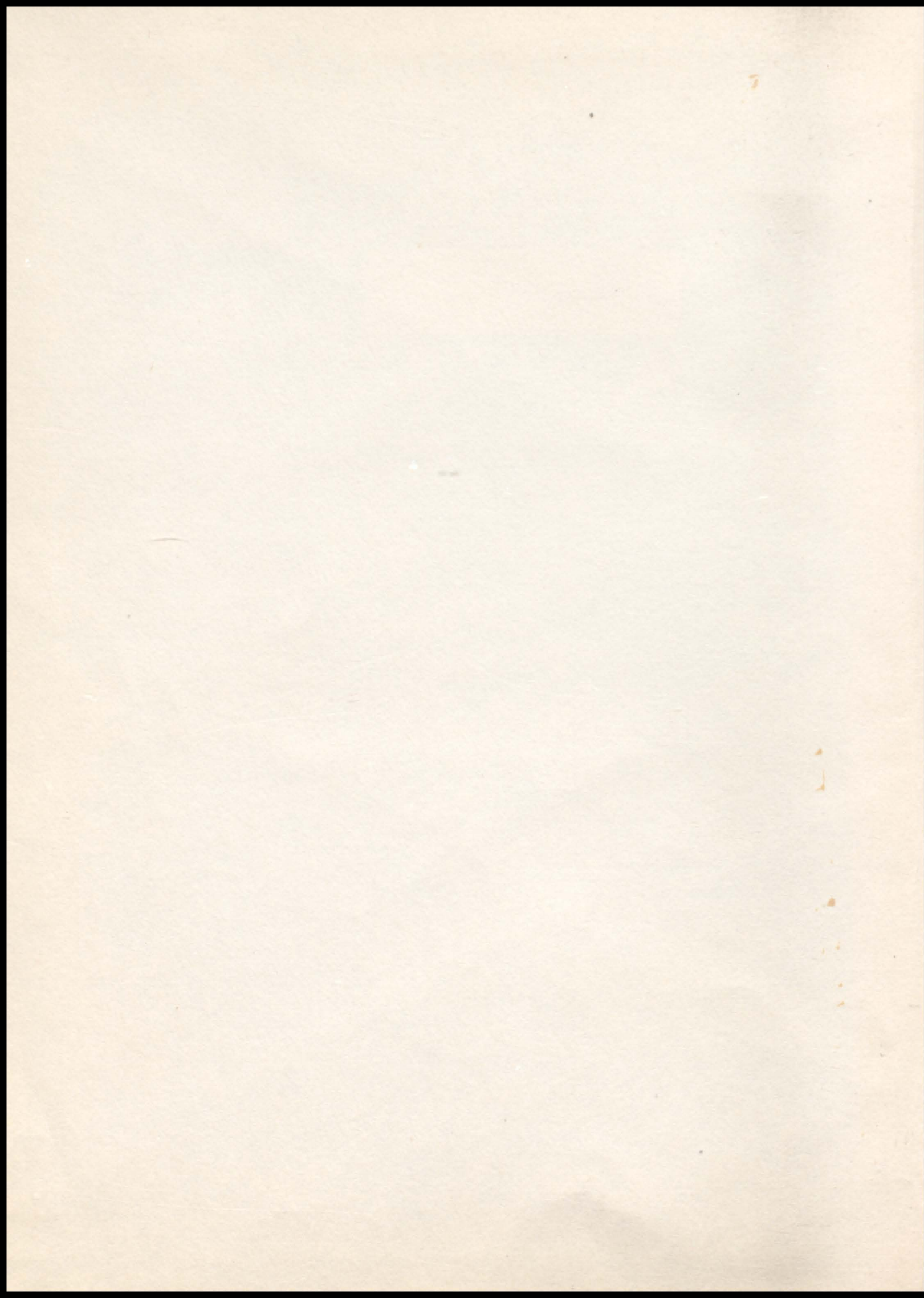
19 ELYSIUM 48















*Elysium*

*1948*



## *Dedication*

We dedicate this book "To Youth  
and Education" upon which the future  
of our nation depends.

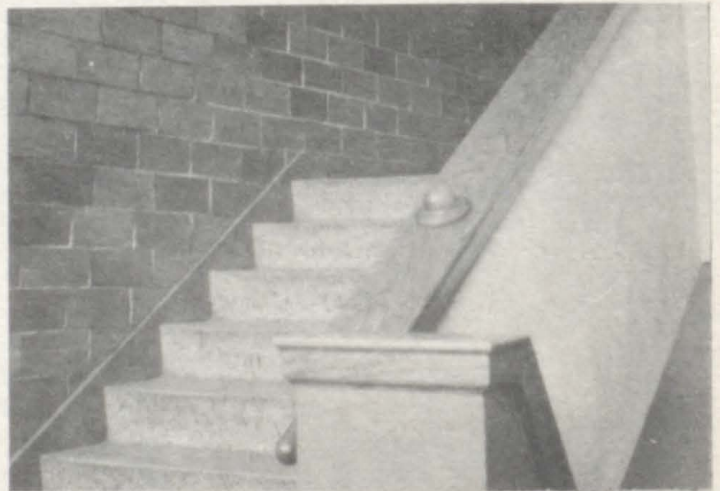
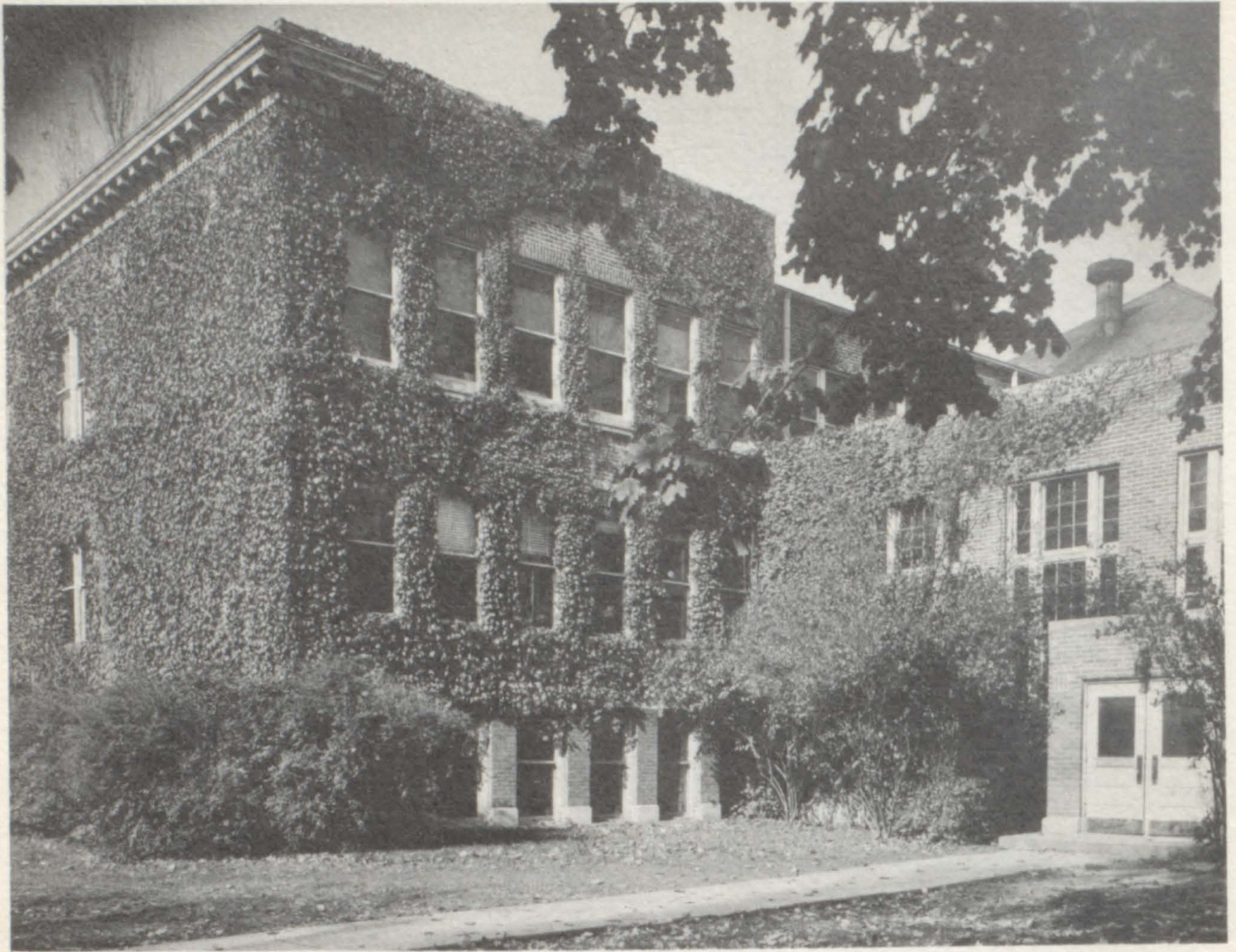
Published by  
The Class of 1948  
BLISSFIELD HIGH SCHOOL  
Blissfield, Michigan





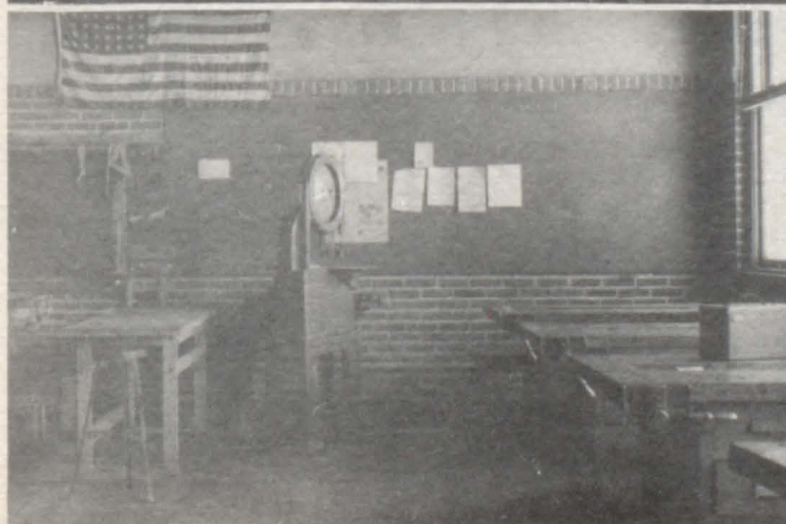
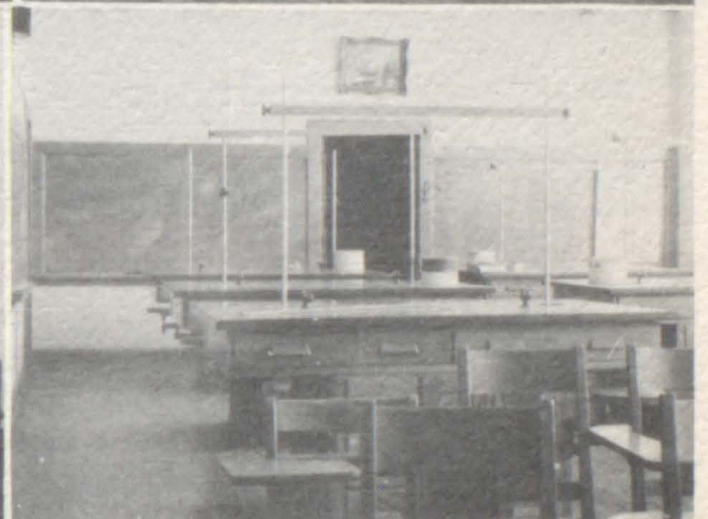
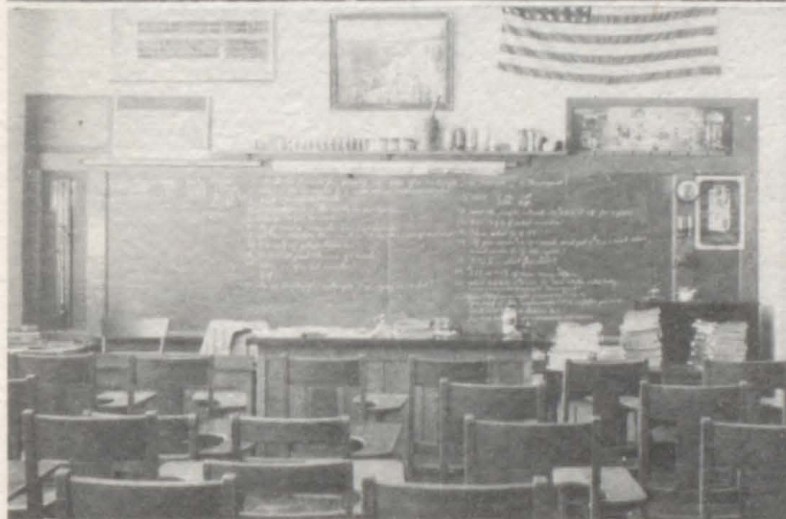
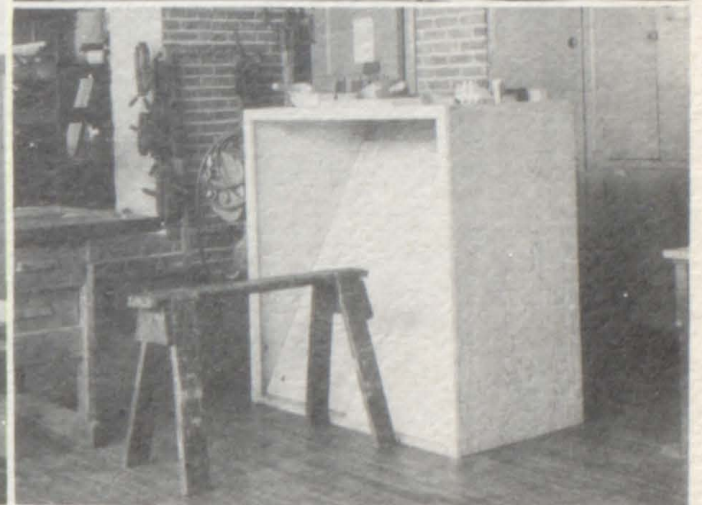
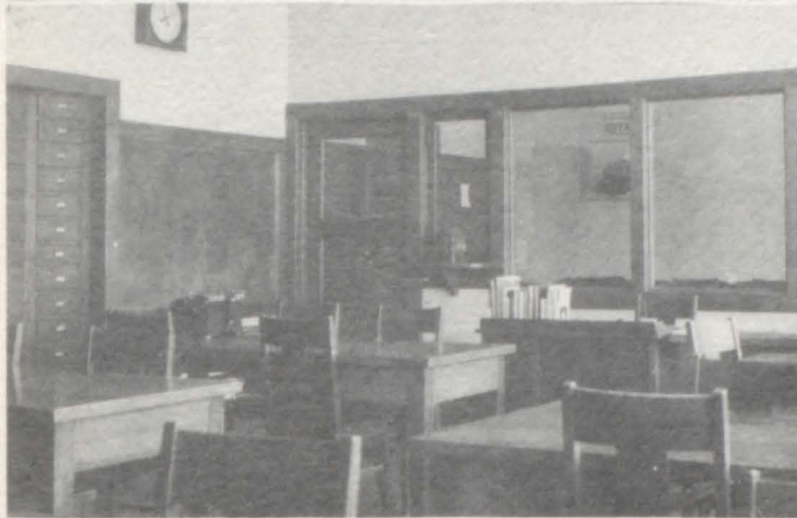
# *Our School*





*Alma Mater*







# Board of Education



*Standing:* J. C. Schwabland, Earl Houghtby.  
*Seated:* Parker Tagsold, President, Mrs. Ward Bettis, Treasurer,  
 Harold Rohrback, Secretary.

FLOYD STRAYER  
 Superintendent

BURDETT PEEBLES  
 Principal

MISS VADA LUKE  
 Office Secretary





# Faculty



*First row:* Gilbert Blanks, Band; Earl Green, Social Studies; Robert Lew, Coach and Mathematics; Robert Rodda, Coach and Social Studies; Montell Morton, Science.

*Second row:* Lorraine Ellis, Library and English; Harold Leader, Junior High; Jacob Venema, Agriculture; Adrian Williams, Industrial Arts; Burdett Peebles, Principal.

*Third row:* Marjorie Brice, Homemaking; Elizabeth Stafford, Chorus; Floyd Strayer, Superintendent; Priscilla Williams, Commercial; Olive Rodda, Latin and English.

Mr. Edwards, English, joined the Faculty at the beginning of the second semester.





# Calendar

## SEPTEMBER

- 17-18 County Fair
- 19 Petersburg football game
- 26 Ida football game
- 30 Garthwell, the G-Man

## OCTOBER

- 3 Clinton football game
- 6 F. H. A.
- 10 Hudson football game
- 13 Seniors stood before camera
- 14 More Seniors had pictures taken
- 15 All School Party, sponsored by Sophomores
- 17 Morenci, football game
- 20 Pheasant Dinner
- 23 Movie "Wintertime"
- 24 Bedford, football game
- 31 St. Mary's, football game

## NOVEMBER

- 3 F. H. A.
- 4 F. F. A.
- 6 Band Festival
- 7 Tecumseh football game
- 11 Short Program in gym
- 12 Movie "Guadalcanal Diary"
- 14 Group Pictures taken for Year-book
- 21 Jr. Play
- 22 Freshman Party
- 28-29 Thanksgiving Vacation

## DECEMBER

- 1 F. H. A.
- 2 F. F. A.
- 5 Petersburg basketball game
- 10 Movie "Jane Eyre"
- 11 A Chapel Choir
- 16 Onsted, basketball game
- 18 Christmas Program
- 19 Clinton basketball game
- 19 Christmas Vacation began

## JANUARY

- 5 School Resumed---F. H. A.
- 6 F. F. A.
- 8 4H Tractor Show

- 9 Tecumseh basketball game
- 13 St. Mary's basketball game
- 14 Band Concert
- 16 Morenci, basketball game
- 20 P. T. A.
- 21 Cole Marionettes, "Puppet Show"
- 23 Hudson basketball game
- 27 St. Mary's basketball game
- 28 Football Banquet--Movie
- 30 Addison basketball game

## FEBRUARY

- 2 F. H. A.
- 3 Petersburg basketball game
- 4 F. F. A.
- 6 Clinton basketball game
- 10 St. Regis Trio
- 13 Tecumseh basketball game
- 17 Bedford basketball game
- 19 P. T. A.
- 20 Morenci basketball game
- 25 Movie "Jesse James"
- 27 Hudson basketball game

## MARCH

- 1 F. H. A.
- 2 F. F. A.
- 26-29 Easter Vacation

## APRIL

- 2 All School Dance, Jr. Class
- 5 F. H. A.
- 6 F. F. A.
- 7 Jr. Talent Program
- 9 F. H. A.--Father & Son Banquet
- 20 Messich Duo
- 21 Movie "Jr. Miss"
- 30 Carnival

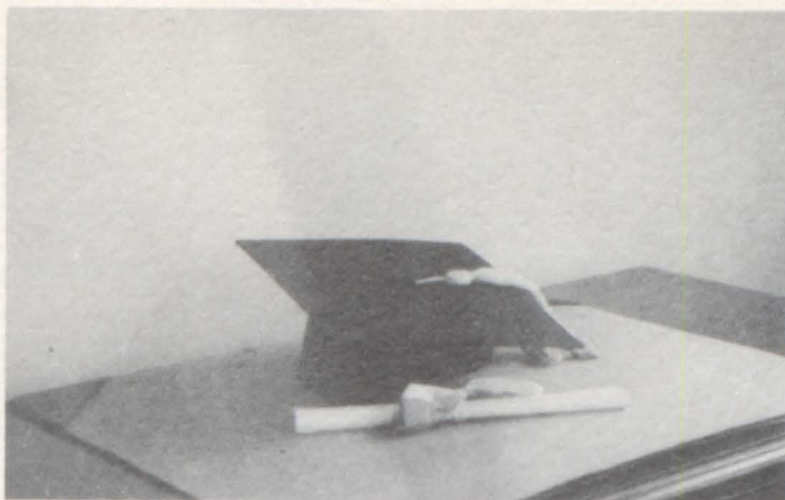
## MAY

- 3 F. H. A.
- 7 Jack Rank
- 12 Movie "Song of Bernadett"
- 30 Baccalaureate Service

## JUNE

- 3 High School Commencement
- 4 School Closes





# *Seniors*





MONTELL MORTON



MRS. OLIVE RODDA

FLOYD J. STRAYER





DONALD AHLEMAN

"Ahley"

Football 4

Baseball 3



FOREST BAILEY, JR.

"Junie"

Basketball 2,3,4

Class Play 3

Band 4

Cheerleader 1

Chorus 4

Operetta 2

JANICE BECKEY

"Janie"

F.H.A. 1,4



GAYLN BERRY

F.F.A. 1,2,3

YVONNE BISCHOFF

"Vonnie"

F.H.A. 1,2

Chorus 1,3

School Paper 4



KATHLEEN BRUCE

"Red"

Student Council 3,4

Secretary

Class Officer 2

Secretary

Class Play 3

F.H.A. 1,2,3,4

Treasurer

Cheerleader 2,3,4

Chorus 1,2

Operetta 1,2

School Paper 4

Honor Student

BURTON BUEHRER

"Pheasant"

Basketball 2,3,4

Baseball 2,3,4

Student Council 2,4

Class Officer 4

President

Class Play 3

Annual Staff

Sports Editor

Operetta 2

School Paper 2,3



DONALD BUSSING

"Don"



MARY ALICE CARR  
"Mac"

Class Play 3  
Chorus 1,2,3,4  
Operetta 1,2  
School Paper 3



HELEN CASE  
"Tiny"

Student Council 1  
Class Officer 1  
Vice President  
Class Play 3  
F.H.A. 1,2,3  
Correspondence Club 3  
Cheerleader 1,2  
Chorus 1,2,3  
Operetta 1,2  
School Paper 3

VIVIAN DAVIS  
School Paper 3



DENESE DESERANNO  
Correspondence Club 3  
Chorus 1,2,3,4  
Operetta 2

BETTY DOYLE  
Student Council 1  
Class Officer 1  
President  
F.H.A. 1,2  
Annual Staff Editor  
Band 1,2  
Valedictorian



LESLIE EBRIGHT  
"Slug"  
Football 3,4

RHEA MAE EISENMANN  
"Rhea"

Class Play 3  
F.H.A. 1,2,3,4  
Chorus 1,2,3,4  
Operetta 1,2



ERNEST FISH  
"Ernie"  
Basketball 2,3  
Baseball 2,3  
F.F.A. 1,2



JOAN FRITZ  
"Fritz"

F.H.A. 1,2,3,4  
Chorus 3,4  
School Paper 4



GERALD GANUN  
"Gerry"

F.F.A. 1,2,3,4  
President 3  
Secretary 4  
Honor Student

RUTH GENTZ  
"Mickey"

F.H.A. 1,2,3,4  
Vice President  
Correspondence Club 3  
Chorus 1,3,4  
Operetta 1  
School Paper 4  
Honor Student



BETTY JANE GOETZ

F.H.A. 1,2,3,4  
Chorus 1,2,3,4  
School Paper 4

COLLEEN GOETZ

F.H.A. 1  
Band 3,4



WENDELL GOETZ  
"Dusty"

F.F.A. 1,2,3

GERALDINE GRAF  
"Gerry"

Student Council 1,4  
Class Officer 1  
Secretary  
Class Play 3  
F.H.A. 1  
Correspondence Club 3  
Annual Staff  
Assistant Editor  
Cheerleader 2  
Operetta 1,2



GERALDINE GREENE  
"Gerry"

Correspondence Club 1



HALDON GRINAGE

"Hal"

Football 2,3,4  
Basketball 2,3  
Track 2  
Class Officer 4  
Vice President  
Class Play 3  
Operetta 2  
School Paper 2



DOROTHY HAMANN

"Dort"

Correspondence Club 2,3  
School Paper 4



ALICE HEJL

F.H.A. 1,4



ANNA HENRY

"Ann"

F.H.A. 1  
Correspondence Club 2,3  
Chorus 1,2  
Operetta 2



ROBERT HILL

"Bob"

F.F.A. 1,2,3,4



HAROLD IFFLAND

Correspondence Club 1  
Chorus 1,4  
Operetta 1



ALFRED KAER

"Al"

Baseball 3  
Class Officer 3  
Vice President  
F.F.A. 3,4  
Annual Staff  
Class Editor  
Honor Student



MARY KLEIDINST

Chorus 1,2,4  
Operetta 1,2  
School Paper 4  
Honor Student





MARIE MC WILLIAMS  
"Mac"

F.H.A. 1,2  
Correspondence Club 3  
Secretary  
Annual Staff  
Sales Manager  
Salutatorian



DORIS NEUROTH

F.H.A. 1,2,3,4  
Correspondence Club 3  
Chorus 1,4  
Operetta 1



DOROTHY NEUROTH

F.H.A. 1,2,3,4  
Correspondence Club 3  
Chorus 1,4  
Operetta 1



JUNE NEUROTH

F.H.A. 1,2,3,4  
Correspondence Club 3  
Chorus 1,4  
Operetta 1  
Honor Student



EARL PHILLIPS  
"Ike"

Student Council 3,4  
Class Officer 1,3  
President  
Class Officer 4  
Treasurer  
F.F.A. 1,2,3,4  
Honor Student



VIRGINIA POTTER

"Deania"  
F.H.A. 1,2  
Chorus 1,2,3,4  
Operetta 1,2  
School Paper 1



RUTH PROCKNOW  
"Ruthie"

F.H.A. 1,2  
Correspondence Club 3  
Chorus 1,2  
Operetta 2



RICHARD RODESILER  
"Rodie"

Football 2,3,4  
Basketball 3,4





PAUL ROUTSON  
"Cobby"  
F.F.A. 1,2,3,4



JEAN SAXTON  
Student Council 4  
Class Officer 2  
Treasurer  
Class Officer 3  
Secretary



STANLEY SAXTON  
"Pete"  
Football 3,4  
Basketball 3  
Cheerleader 1  
School Paper 1



LOIS SCHMELZER  
F.H.A. 1,2,3  
Correspondence Club 2,3  
Chorus 1  
Operetta 1



ARTHUR SCHNEIDER  
"Art"  
F.F.A. 3,4



MARLENE SCHOLL  
"Scholl"  
Student Council 2,3,4  
Sec. 3, V. Pres. 4  
Class Officer 2, Pres.  
Class Play 3  
F.H.A. 1,2,3,4  
Sec. 3, Pres. 4  
Correspondence Club 3  
Annual Staff  
Advertising Editor  
Cheerleader 2,3,4  
Chorus 1,3  
Operetta 1,2  
Honor Student



GERALD SELL  
"Gerry"  
F.F.A. 1,2,3,4



FRANCES SMITH  
"Fran"  
F.H.A. 1,2,3,4  
Chorus 1,3  
Operetta 1





WILLIAM STAUP  
"Bill"



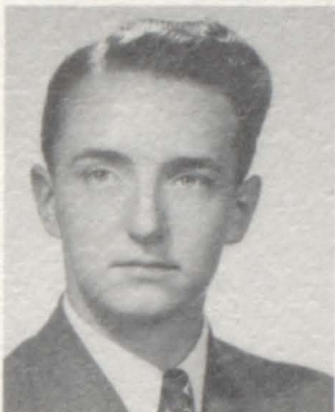
MARY ELLEN LOAR  
"Loar"

F.H.A. 2, 3, 4  
Band 3, 4  
Chorus 2  
Operetta 2



GENE H. TABBERT  
"Professor"

Student Council 3, 4  
President  
Class Officer  
Treas. 3; Sec'y 4  
Class Play, Junior  
Annual Staff  
Business Manager  
Band 4  
Chorus 4



NORMA TIEDE  
"Star"

F.H.A. 1, 2  
Chorus 1, 2, 3  
Operetta 1, 2



THOMAS VAN BUREN  
"Vandie"

Class Play, Junior  
Band 2, 3, 4  
Chorus 3, 4  
Operetta 1



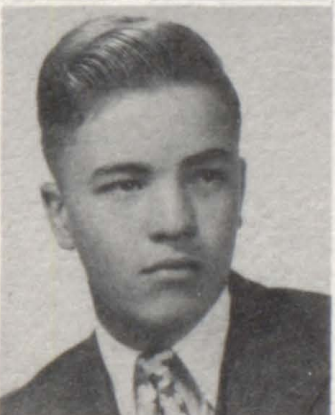
PAUL WALPER  
"Tick"  
F.F.A. 1, 2, 3, 4



WENDELL YOUNG  
"Windie"  
F.F.A. 1, 2, 3, 4  
Operetta 1



LEE SWIFT





## Class History

On a day in September, 1944, a new Freshman Class entered the fold of Blissfield High School. This group, destined to be the Class of 1948, had a time getting used to the complicated system of high school but always being an intelligent class we caught on in a short time. Our class officers for the Freshman year were: president, Betty Doyle; vice-president, Helen Case; secretary, Gerry Graf; and treasurer, Gordon Kirsch. Our advisors were Miss Randolph and Mr. Williams. We were initiated, soon after school started, by the lordly upper-classmen, who enjoyed the initiation more than we did! Through the year we sponsored an all school party, a talent program, and a few of our potential actors were in the operetta, "Hats Off."

Next year we returned as sophomores. Now we were beginning to feel that we were a part of the upper-classmen. We elected as class officers the following: president, Marlene Scholl; vice-president, Earl Phillips; secretary, Kathleen Bruce; treasurer, Jean Saxton. Mrs. Miller and Mrs. Morgan acted as advisors. It was quite an honor to take part in the operetta "Hollywood Extra", and serve at the annual Junior-Senior Banquet. During the year, we had charge of another talent program and sponsored a Thanksgiving dance.

Upon reaching our Junior year, we elected Earl Phillips, president; Alfred Kafer, vice-president; Jean Saxton, secretary; and Gene Tabbert, treasurer. Mr. Morton, Miss Hollis, and Miss Mapes were our advisors. That year we felt quite dignified to be able to give the seniors a wonderful banquet. We enjoyed the decorating and the planning almost as much as the ban-

quet itself. The chemistry classes took a trip to Silica Quarry, Toledo Art Museum, and the Toledo Zoo. We had our junior class party in the form of a roller-skating party at Hilltop. Also, that year, we presented the play, "Sunshine Twins", a talent program, a hard-times party, and a Christmas dance.

In the fall of 1947 we were proud to be enrolled as Seniors in Blissfield High School. The positions of authority in our class were filled by Burton Buehrer, president; Haldon Grinage, vice-president; Gene Tabbert, secretary; Earl Phillips, treasurer. Mr. Strayer, Mrs. Rodda, and Mr. Morton were our advisors. This, our last year, found us busier than ever before. We started off the school year by having our graduation pictures taken. Later, we decided to publish a school annual, "Elysium". In the second semester, we gave the play, "Ah! Men!" and sponsored booths at the Student Council Carnival. We were given a wonderful banquet by the Juniors a short time after our boat trip on the S. S. Noronic into White Fish Bay. Baccalaureate and Commencement were two of the biggest joys of a life time.

These have been four of the busiest and best years of our lives and will always be in our memories.

We know that in the future there will be many difficult roads to travel, but we hope to achieve success in life as well as being worthwhile citizens of our country.

Mary Kleidinst  
Earl Phillips  
June Neuroth



# Class Will

We, the graduates of Blissfield High School, class of '48, in the City of Blissfield, State of Despair, do will the following things to the underclassmen, in the presence of Mighty Mouse, Beaky Buzzard, and Porky Pig, as witnesses:

Don Ahleman wills his way with Adrian women to "Skip" Kastel.

Junior Bailey wills his basketball ability to Melvin Gieb.

Janice Beckey wills her shyness to "Bev" Brieschke.

Gayln Berry wills his ability to guess-the-answer to Lois Bowman.

Yvonne Bischoff wills her girl friend, Virginia, to Harvey Sheldon.

Kathleen Bruce wills her red hair to Barbara Youngs.

Burt Buehrer wills his basketball ability to Henry Schmidt.

Don Bussing wills his ability to date a girl and her car to "Donny" Betz.

Mary Alice Carr wills her poise to Jane Ann Ingold.

Helen Case wills her sudden change of hair style to Deanne Wright.

Vivian Davis wills her habit of always being late to class to Verlinda Ford.

Denese DeSeranno wills rosy cheeks to Alice Phillips.

Betty Doyle wills her brains to Dean Keller.

Leslie Ebright wills his way with the English teacher to Ed Moray.

Rhea Mae Eisenmann wills her quick decisions to Gaye Jean Saxton.

Ernie Fish wills his wavy hair to Jim Bauer.

Joan Fritz wills her changeable ways to Joan Knoblauch.

Gerald Ganun wills his studious ways to "Duke" Burgermeister.

Ruth Gentz wills her ability to have a perfect crowning glory to Alma Phipps.

Colleen Goetz wills her blonde hair to Barbara Goble.

Betty Jane Goetz wills her easy way in the kitchen to Phyllis Meyers.

Wendell Goetz wills his Freshman girls to Willis Smith.

Gerry Graf wills her smiling way to Kathryn Ries.

Geraldine Greene wills her ability to be engaged so early to Merrie McGlenn.

Hal Grinage wills his glossy hair to "Bobby" Seeger.

Dorothy Hamann wills her love stories to Marzee Saxton.

Alice Hejl wills her quiet ways to Sally Keller.

Ann Henry wills her ability to get the other girls fella to Dolores Hatcher.

Robert Hill wills his tardiness to Margie Scholl.

Harold Iffland wills his winning ways to "Frankie" Loveland.

Alfred Kafer wills his argumentative ways to Douglas Hasenpflug.

Mary Kleidinst wills her ability to catch -a-man to her sister, Elaine.

Mary Ellen Loar wills her many engagements to anyone who wants them.

Marie McWilliams wills her ability to become Salutatorian to Rhea Weller.

Doris Neuroth wills her boyfriend problems to Lois Hahn.

Dorothy Neuroth wills her ability to walk a plank to Ann Harrington.

Virginia Potter wills her typing ability to Elinor Mann.

Ruth Procknow wills her library card to Barbara Deak.

Earl Phillips wills his ability to own a car at 17 to Hal Tuckerman.

Dick Rodesiler wills his ability to have the girls go crazy over him to Bob Zimmerman.

Paul Routson wills his trouble with women to "Louie" Bowman.

Jean Saxton wills her way of wearing clothes to Margaret Berry.

Stan Saxton wills his good looks and drawing ability to Walt Tuckerman.

Art Schneider wills his unique way of tying ties to anyone who thinks it neat.

Lois Schmelzer wills her librarian ability to all future students.

Marlene Scholl wills her ability to ride in jeeps to Joan Rohrback.

Gerald Sell wills his luck to Harriette Rohrback.

Frances Smith wills her running pace to Mary Sinclair.

Bill Staup wills his little house to any underclassman who may be interested in playing a game of you-know-what.

Mary Ann Studnicka wills her black hair to Imogene Hazard.

Lee Swift wills his dishpan hands to Dee Goetz.

Gene Tabbert wills his ability to argue any statement to Jim Fischer.

Norma Tiede wills her dancing ability to Jim Snyder.

Tom Van Buren wills his sense of humor to Cloyce Lidster.

Paul Walper wills his hunting ability to Dick Rothfuss.

Wendell Young wills his ability to drive a Plymouth to "Bev" Brieschke.

Marlene Scholl  
Gerald Ganun  
Helen Case



# Class Prophecy

Earl Phillips is the renter of a two-acre farm just outside Palmyra.

Hal Grinage waits for all trains so he can carry the mail to the postoffice.

Mary Alice Carr is the postmistress in a small town, most of us know as Hudson.

Helen Case is a stewardess with the Adrian Transport Lines.

Betty Doyle is settled down raising little Hueters'.

Ruth Gentz is using her wonderful ability of setting hair at the Barret Beauty Bar.

Norma Tiede is giving dancing lessons on a larger scale.

Kathleen Bruce is settled down in Ft. Wayne raising little basketball players.

Gerry Graf giggles regularly on Station WJR.

Gerald Ganun is a top professor at the Massachusetts Institute of Technology.

Frances Smith is running the half mile at Madison Square Garden in the Women's Olympics.

Alfred Kafer is running a few feet behind.

Paul Routson has worked himself up from a Mercury to a Lincoln convertible.

Dorothy Neuroth is the county librarian in a small town in Iowa.

Ruth Procknow is a Book Reviewer for the New York Times.

Lee Swift has the "Chevie" every other night for sure now.

Don Ahleman is a traveling salesman for the Fuller Brush Company.

Janice Beckey is head woman on the board of trustees for a Petersburg Bank.

Tom Van Buren is leading his own band in Albuquerque, New Mexico.

Stan Saxton is teaching at a Tuesday night art class at Riga Tech.

Mary Kleidinst is giving piano lessons to her five little Goetz's.

Burt Buehrer is coaching a championship team at Ft. Wayne.

Harold Iffland is an undertaker in Archibold, Ohio.

Junior Bailey is still running his drive-in drug store at Victorsville corners.

Alice Hejl is a school teacher in Crane District No. 5.

Betty Jane Goetz is chief cook and bottle washer at Goetz's Snak Bar.

Rhea Mae Eisenmann is the president of the Society for the Prevention of Cruelty to the Veterans of the Civil War.

June Neuroth is a cleaning lady, coming around every other Thursday.

Don Bussing is head frankfurter twister at Kastel's Slaughter House.

Les Ebright and Bill Staup are the managers of the Blissfield Down-Town Poker Parlor.

Gerald Sell has moved, and is now a Senator from West Texas.

Jean Saxton is modeling for John Robert Powers.

Robert Hill is now sole owner of Hill-top Roller Rink.

Gayln Berry is working up among the janitors at Blissfield High School.

Mary Ellen Loar is a school marm, and of course she is married.

Gene Tabbert is chief burr-tightener at the "Snappy Motor Sales" in a town in New Mexico.

Marlene Scholl is now starring in the "Life of Charlie Keller."

Paul Walper is now running the "Walper Farms One, Two, Three, Four, Five, Six, and Seven."

Marie McWilliams has a new car, but the same old riders. Among them is Anna Henry, but it sure is crowded with her seven kids along.

Joan Fritz is married, but we haven't decided to whom.

Ernie Fish and Wendell Young have gone together in business. They sell live bait.

Denese DeSerrano is dusting picture frames at the Toledo Museum of Art.

Vivian Davis still skips work like she used to skip school.

Doris Neuroth is picking fly specks out of pepper at all the village restaurants.

Art Schneider is one of the largest cattle feeders in the Northwest.

Dorothy Hamann is head nurse at a hospital for under privileged railroad workers.

Wendell Goetz is running a big ranch out West of Blissfield.

Mary Ann Studnicka has learned to roller skate, and will appear in the "1968 Skating Vanities."

Yvonne Bischoff is specializing in first grade arithmetic.

Geraldine Greene is the personal secretary for John L. Lewis.

Colleen Goetz is owner of a Young Women's Insurance Company.

Virginia Potter is still a man-hater.

Lois Schmelzer is the new principal at Blissfield High School.

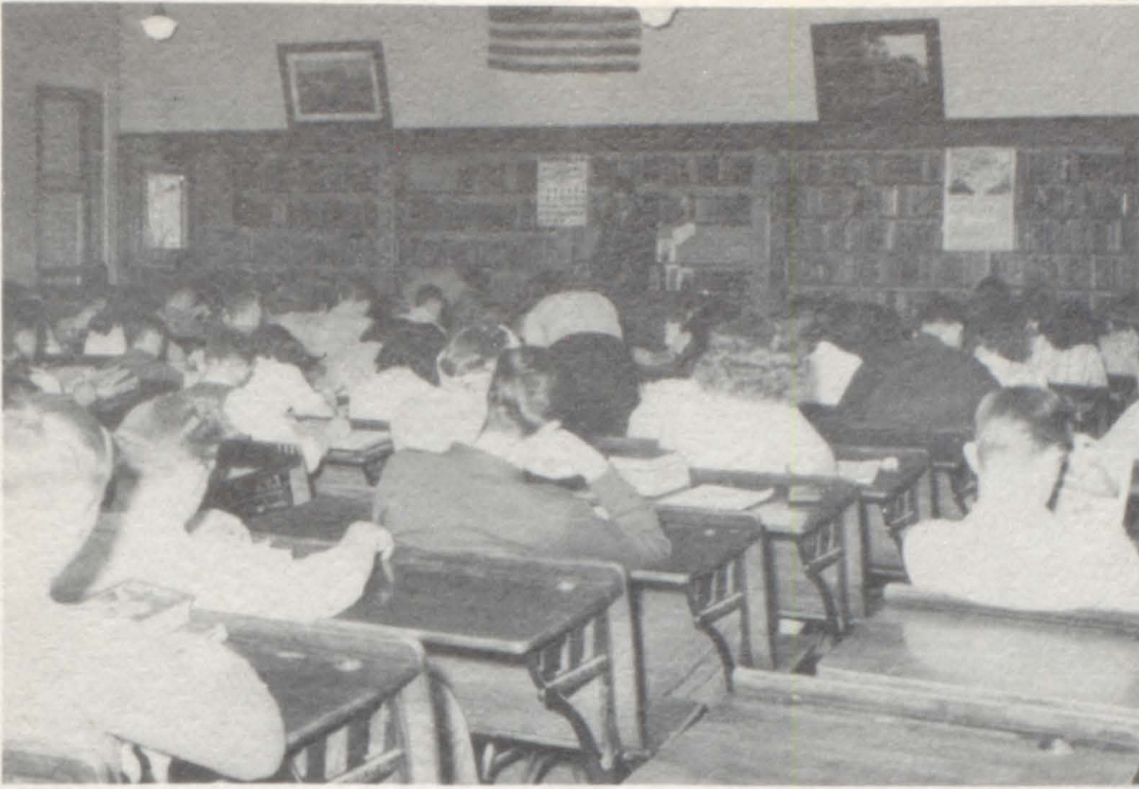
Richard Rodesiler is playing pro-basketball with the Walla Walla All Stars.

Kathleen Bruce

Alfred Kafer

Ruth Gentz





# *Classes*



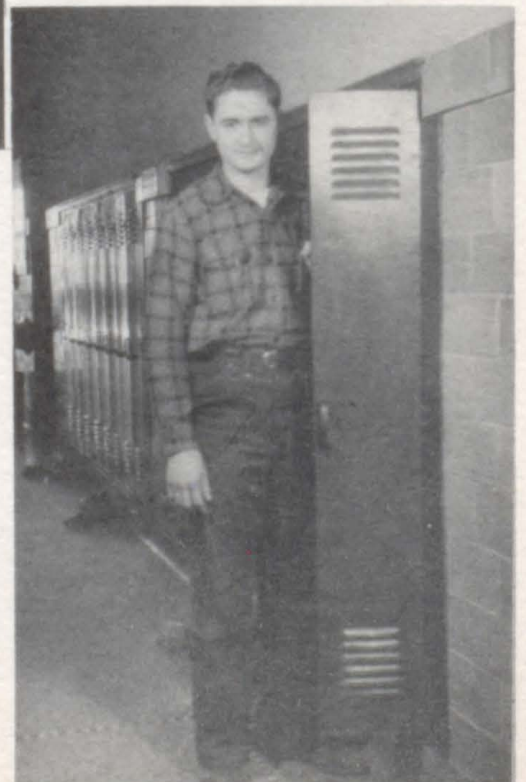


JIM SYNDER  
Junior President



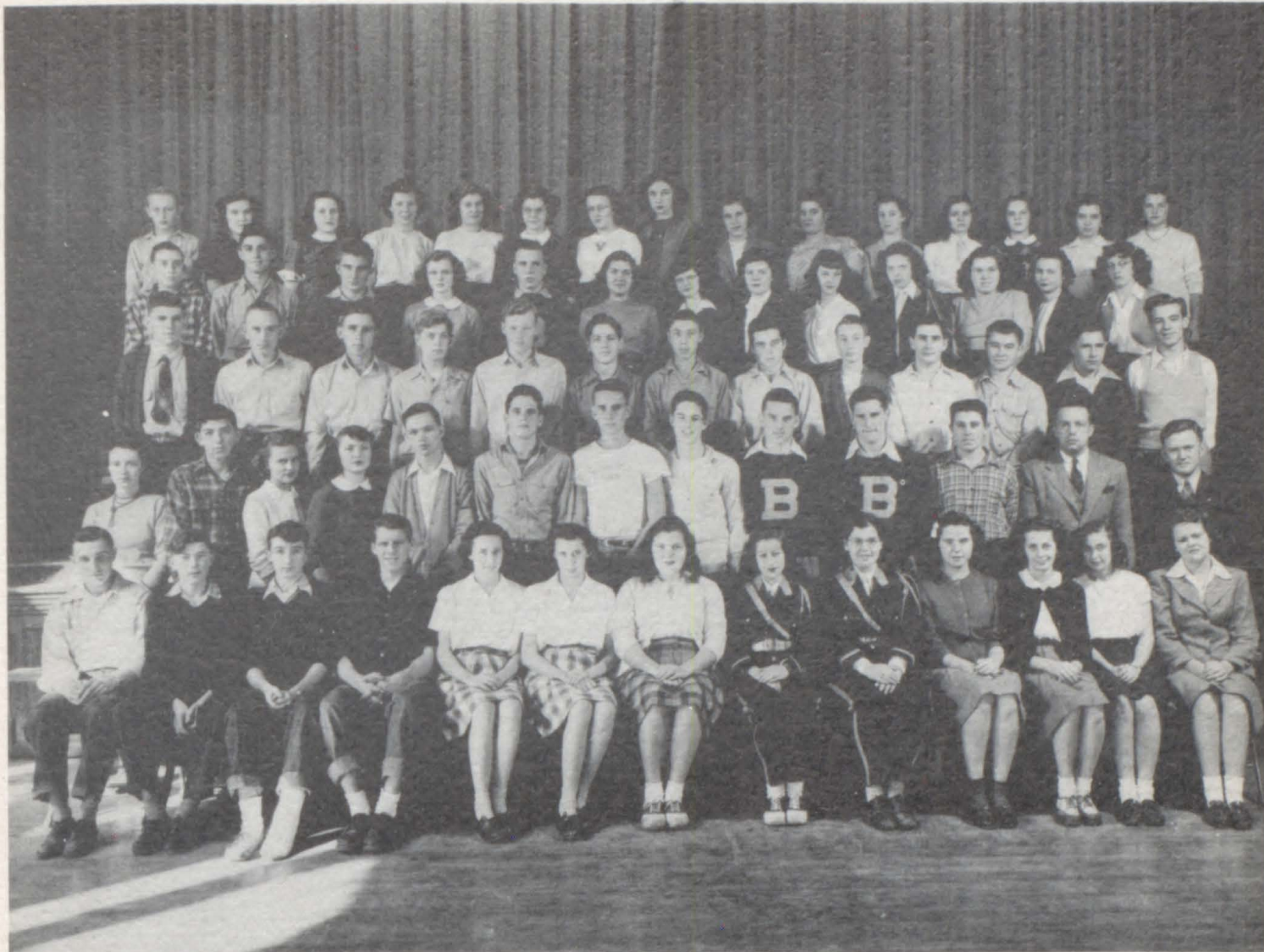
JOAN STAUP  
Sophomore President

JAYE STEWLOW  
Freshmen President





# *Juniors*



*First row:* S. Beckey, E. Brubaker, B. Henson, D. Miller, M. DeNudt, V. Ford, A. Berry, I. Fogelson, J. Porter, P. Saunders, P. Moore, K. Tubbs, M. McGlenn, B. Young, M. Berry.

*Second row:* D. Isley, J. Basset, L. Kastle, I. Hazard, D. Goetz, C. Strayer, L. Snyder, A. Harrington, D. Hatcher, G. Berger, C. Berry, M. Lipp, F. Dominique.

*Third row:* D. Abling, J. Beckey, E. Myers, J. Fischer, W. Ford, H. Schmidt, R. Fritz, W. Berry, R. Seeger, D. Hasenpflug, J. Sell, E. Marks, J. Snyder.

*Fourth row:* Mrs. Brice, H. Bailey, J. Demlow, D. Wright, B. Grew, W. Tuckerman, R. Chandler, R. Simpson, E. Pfeifer, D. Keller, C. Lidster, Mr. Green, Mr. Peebles.

*Fifth row:* H. Sheldon, W. Smith, R. Rothfuss, E. Moray, L. Ickler, L. Ickler, S. Seegert, P. Meyers, D. Strobel, T. Sherman, B. Goetz, M. Wilt, R. Weller.



# Sophomores



*First row:* P. Papenhagen, G. Saxton, L. Hahn, E. Mann, B. Goble, B. Brieschke, C. Neuman, E. Grady, M. VanNuenzie, D. Clingaman, V. Snyder, J. Knoblauch, V. Potter, P. Creque, R. Sheldon.

*Second row:* D. Holtz, M. Shaffer, D. Tiede, J. Dettman, E. Winkleman, N. Malzahn, M. Young, M. Seeburger, L. Berry, E. Follis, J. Staup, M. Schmidt, M. Ganun, M. Sinclair, L. Bowman.

*Third row:* K. Saxton, R. Setzler, H. Phillips, R. Zimmerman, J. Bauer, E. Burgermeister, H. Rohrback, D. Delker, J. Ingold, L. Komsteller, G. G. Thompson, A. Sliker, K. Paulson, N. Sharp, L. Jacobs.

*Fourth row:* Mr. Venema, Mr. Williams, G. Biehl, R. Knoblauch, D. Ebright, R. Dunbar, C. Garno, L. Crockett, K. Garno, R. Mapstone, A. Loar, C. Kapnick, L. Bowman, D. Betz, H. Bailey, F. Clements, Miss Williams.

*Fifth row:* C. Fowler, D. Fish, J. Simpson, G. Cheney, H. Karmol, G. Miller, L. Burghardt, R. Meyers, F. Lindsey, A. Bruce, W. Goetz, C. Piotter, F. Deak, R. Staup.



# Freshmen



Row one: E. Goetz, M. Lipp, D. Henson, E. Anteau, M. Loar, G. Sell, B. Goetz, M. Clement, R. Jordan, C. Helzer, C. Wilson, L. Sheldon, R. Fischer, K. Piotter, W. Sieler.

Row two: D. Jasmund, A. Phillips, R. Wilkinson, C. Rehklau, M. Walter, A. Tiede, G. Koester, D. Mobley, D. Jacobs, G. Houghtby, J. Martinez, L. Martinez, A. Berger, M. Young, E. Klock, M. Scholl.

Row three: H. Brubaker, J. Shepard, B. Briggs, J. Rohrback, J. Scott, E. Kleidinst, B. Deak, J. Knisel, D. Prielipp, K. Butler, M. DeLoach, J. Goetz, K. Ries, M. DeVriendt, E. Phipps.

Row four: Miss Ellis, M. Tagsold, S. Keller, C. Crist, D. Papenhagen, H. Salisbury, H. Tuckerman, E. Rodriguez, M. Wahl, D. Gentz, A. Klump, L. Goetz, W. Butler, G. Grinage, B. Emch, Mr. Rodda, Mr. Lew.

Row five: M. Geib, C. Fish, D. Vasquez, S. Hejl, V. Hejl, G. Denecker, J. Stewlow, D. Butts, A. Crance, R. Wilkinson, E. Heiser, D. Cruz, D. Hill, S. Karl.

## OFFICERS

President . . . . .	Jaye Stewlow
Vice President . . . .	Ruth Wilkinson
Secretary . . . . .	Marjorie Scholl
Treasurer . . . . .	Elaine Kleidinst



# *Eighth Grade*



First row: M. Staup, P. Lievens, M. Ries, N. Ries, N. Komstellar,  
P. Saxton, C. Berry, V. Winkleman.  
Second row: Miss Stafford, J. Lippens, D. Rohrback, R. Madrid, J.  
Sanchez, A. Neuman, C. Edwards.  
Third row: R. Mallory, N. Henson, L. Nine, E. McCarty, P. Marks,  
P. Traister, D. Shaffer.



## Seventh Grade



*First row:* F. Rost, B. McCormick, D. Sinclair, B. Kerbawy, D. Brubaker, T. Mallory, J. Lippens, A. Clements, B. Marks.  
*Second row:* M. Brownell, A. Henson, R. Coopshaw, P. Tagsold, G. Goll, R. Raymond, T. Williams, G. Wingerd, I. Camero.  
*Third row:* Mr. Leader, D. Barron, J. Lehman, B. Bradstrum, A. Haas, P. O'Bryan, M. Rodesiler, H. Petee, B. Billington, B. Davis.  
*Fourth row:* V. Garcia, J. Bettis, R. Seegert, R. Bierley, K. Briggs, F. Loveland, E. Crane, M. Cline.



# *Autographs*





*At Work*



AGRICULTURE



ANNUAL STAFF



TYPING CLASS



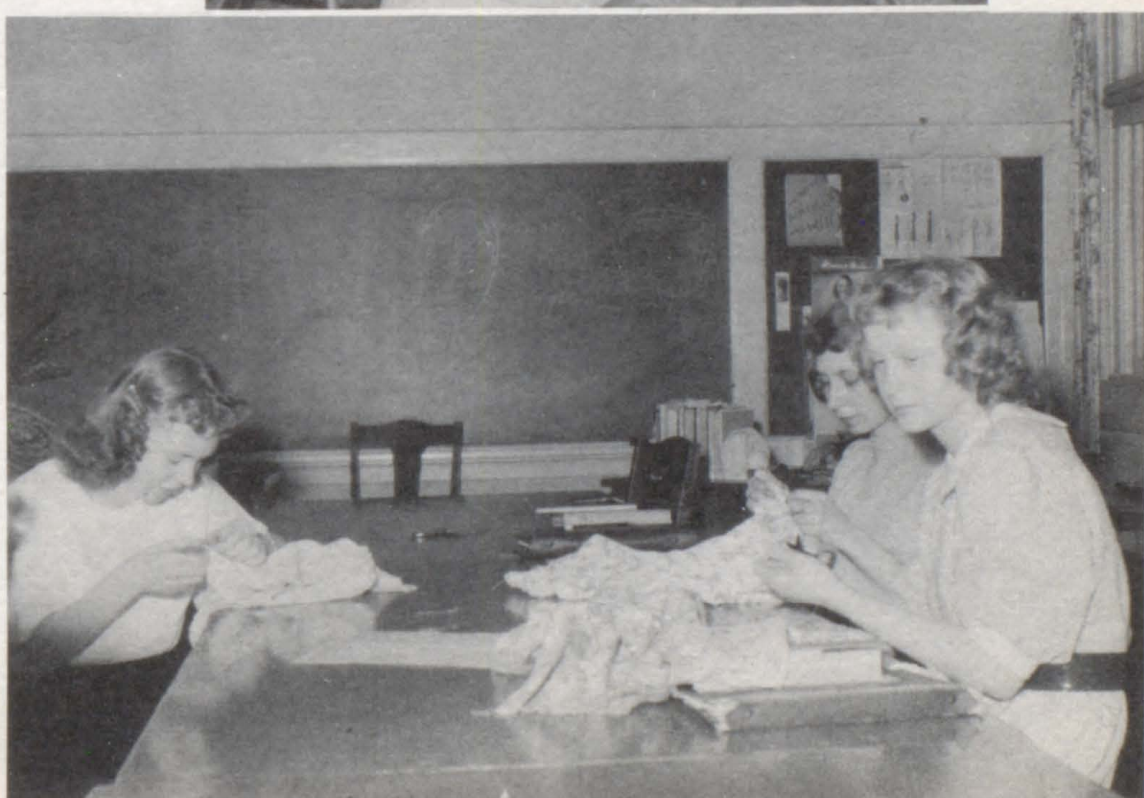


HOME ECONOMICS  
CLASS

INSTRUMENT LESSONS



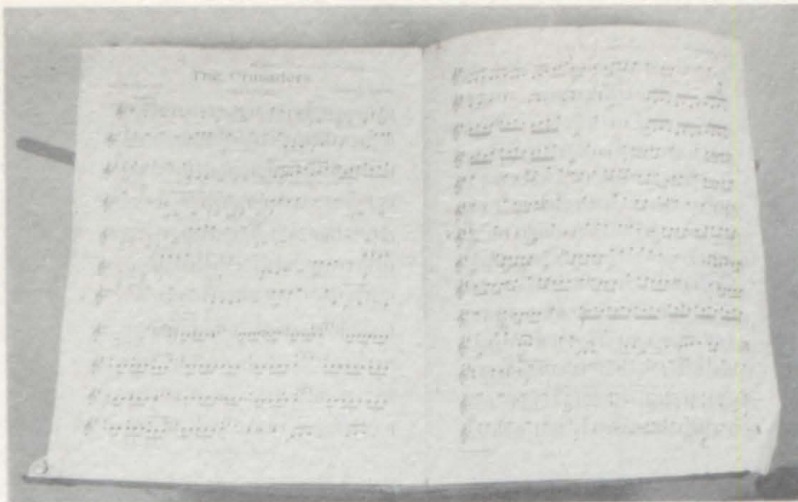
HOME ECONOMICS  
CLASS











*Music*



# Band



*First row:* N. Malzahn, A. Sliker, M. Shaffer, P. Saxton, G. Berger, B. Bradstrum, G. Houghtby, G. Thompson, M. Tagsold, G. Grinage, P. Lievens.

*Second row:* B. Saxton, G. Goll, P. Meyers, K. Tubbs, M. Loar, D. Strobel, C. Crist, R. Zimmerman, B. McCormick, J. Bettis.

*Third row:* M. Rodesiler, V. Winkleman, C. Berry, J. Bailey, J. Zimmerman, M. Scholl, B. Emch, B. Goble, L. Snyder, C. Strayer, Mr. Blanks.

*Fourth row:* G. Goetz, S. Keller, B. Brieschke, G. Saxton, E. Mann, E. Winkleman, J. Ingold, D. Betz, K. Saxton, G. Tabbert.



## *Fourth Hour Chorus*



*First row:* J. Knoblauch, V. Snyder, L. Snyder, K. Butler, M. DeVriendt, P. Papenhagen, E. Mann, G. Grinage, V. Ford, L. Betz, M. McGlenn, D. Betz, M. Scholl.

*Second row:* D. Clingaman, E. Winkelman, C. Strayer, B. Goble, B. Young, M. DeNudt, R. Gentz, M. Lipp, M. Sinclair, G. Berger, C. Crist.

*Third row:* Miss Stafford, A. Berry, J. Bailey, G. Tabbert, J. Demlow, P. Meyers, M. Tagsold, C. Rehklaue, G. Thompson, S. Keller, J. Ingold.

*Fourth row:* D. Wright, R. Eisenmann, H. Rohrback, L. Komsteller, L. Ickler, L. Ickler, V. Potter, B. Briggs, A. Sliker.



## *Fifth Hour Chorus*



*First row:* B. Young, B. Brieschke, L. Hahn, M. Lipp, J. Staup, L. Bowman, K. Tubbs, E. Goetz, M. Loar, D. DeSeranno, V. Potter, P. Creque.

*Second row:* D. Hatcher, A. Harrington, E. Phipps, H. Brubaker, J. Rohrback, R. Wilkinson, A. Phillips, K. Ries, J. Goetz, E. Klock, E. Follis, N. Schmidt.

*Third row:* Miss Stafford, M. Kleidinst, B. Goetz, J. Neuroth, N. Sharp, D. Holtz, M. Carr, J. Knisel, A. Tiede, B. Deak, J. Scott, E. Kleidinst.

*Fourth row:* M. Ganun, D. Neuroth, E. Moray, H. Iffland, J. Fischer, R. Rothfuss, J. Fritz, K. Paulson, M. Shaffer, B. Goetz, D. Neuroth.



## Seventh & Eighth Grade Chorus



*First row:* V. Winkleman, H. Petee, J. Lehman, B. Bradstrum, P. O'Bryan, B. Kerbway, B. Davis, M. Brownell, T. Mallory, F. Rost, B. McCormick, B. Marks.

*Second row:* Miss Stafford, A. Haas, M. Ries, P. Lievens, N. Ries, R. Coopshaw, B. Billington, C. Berry, M. Staup, M. Rodesiler.

*Third row:* L. Nine, P. Marks, E. McCarty, P. Traister, M. Cline, C. Edwards, P. Tagsold, G. Goll, D. Shaffer, A. Henson.





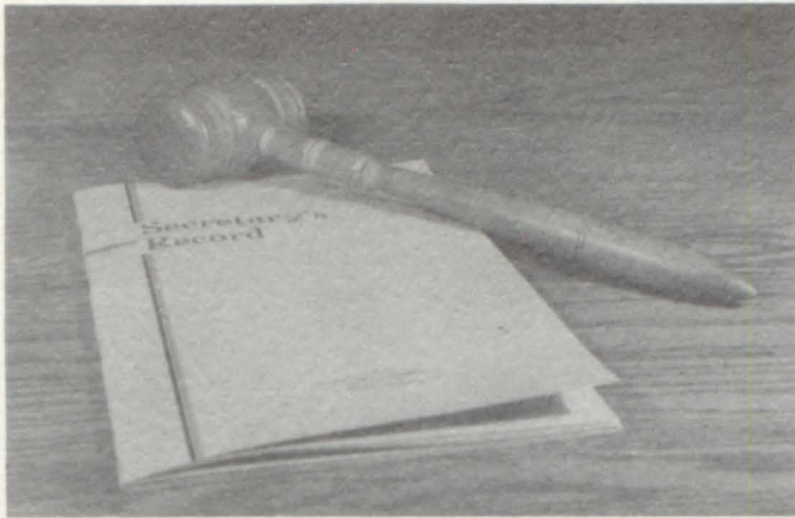
F. F. A. - F. H. A.  
PHEASANT  
DINNER

TECUMSEH  
vs.  
BLISSFIELD



HALLOWEEN  
DANCE





# *Activities*



# Annual Staff



*Standing:* A. Kafer, Mr. Strayer, G. Tabbert.

*Seated:* M. McWilliams, G. Graf, B. Buehrer, M. Scholl, B. Doyle.

Editor . . . . .	Betty Doyle
Assistant Editor . . . . .	Gerry Graf
Class Editor . . . . .	Alfred Kafer
Activities Editor . . . . .	Helen Case
Sports Editor. . . . .	Burton Buehrer
Business Manager. . . . .	Gene Tabbert
Advertising Manager. . . . .	Marlene Scholl
Sales Manager . . . . .	Marie Mc Williams
Faculty Adviser. . . . .	Mr. Strayer



## Student Council



*First row:* J. Lippens, P. Tagsold, J. Staup, J. Saxton, M. Scholl, Vice-President, K. Bruce, Secretary, B. Young, J. Knoblauch, C. Berry.

*Second row:* Mr. Peebles, F. Deak, D. Butts, B. Seeger, M. Tagsold, M. Shaffer, G. Graf, D. Kruse.

*Third row:* G. Tabbert, President, E. Pfeifer, E. Phillips, B. Grew, J. Snyder, Treasurer, J. Stewlow, B. Buehrer.



# Journalism



*First row:* B. Goble, M. Lipp, R. Jordan, A. Berry, J. Porter, J. Fritz, K. Bruce, M. Berry, M. McGlenn.

*Second row:* Mrs. Rodda, B. Saxton, J. Demlow, R. Weller, G. Saxton, M. Wilt, R. Gentz, E. Mann, B. Goetz.

*Third row:* W. Tuckerman, E. Moray, J. Snyder, J. Fischer, R. Rothfuss, D. Hamann, M. Studnicka.



# The Home Economics Club



*First row:* K. Bruce, J. Fritz, J. Goetz, H. Brubaker, C. Neuman, E. Goetz, M. Loar, P. Moore, B. Henson, E. Anteau, D. Clingaman, V. Snyder, V. Potter, J. Knoblauch, P. Creque.

*Second row:* P. Papenhagen, E. Mann, L. Betz, K. Ries, M. Berry, V. Ford, B. Goble, M. Scholl, R. Gentz, M. Lipp, B. Emch, D. Jasmund, D. Hatcher, M. Scholl.

*Third row:* M. Loar, C. Berry, M. Lipp, J. Porter, M. Sinclair, A. Hejl, B. Briggs, R. Wilkinson, A. Berry, A. Phillips, E. Brubaker, A. Harrington, G. Grinage, C. Strayer.

*Fourth row:* Mrs. Brice, S. Keller, G. Thompson, C. Crist, B. Goetz, J. Neuroth, K. Paulson, A. Tiede B. Deak, J. Dettman, J. Rohrback, M. Wilt, B. Saxton, I. Hazard.

*Fifth row:* L. Komsteller, H. Rohrback, M. Walter, A. Sliker, R. Eisenmann, E. Smith, M. DeNudt, I. Fogelsong, J. Beckey, D. Neuroth, D. Wright, D. Neuroth, B. Goetz.



# *Future Farmers of America*



*First row:* S. Beckey, R. Mapstone, C. Kapnick, A. Bruce, W. Goetz, M. Gieb, G. Sell, H. Bailey, L. Sheldon, B. Goetz, K. Piotter, D. Betz.

*Second row:* J. Sell, J. Basset, W. Smith, H. Karmol, G. Cheney, L. Burghardt, R. Meyers, F. Deak, D. Isley, G. Koester, F. Lindsey.

*Third row:* Mr. Venema, J. Beckey, A. Schneider, A. Kafer, E. Phillips, G. Sell, W. Young, E. Burgermeister, P. Routson, H. Bailey, H. Sheldon.

*Fourth row:* C. Lidster, E. Masks, L. Kastle, D. Goetz, E. Pfeifer, D. Keller, R. Rodesiler, D. Abling, E. Myers, R. Setzler, H. Phillips.



# Senior Play



*First row:* H. Iffland, J. Neuroth, D. Neuroth, L. Schmalzer, G. Tabbert, T. Van Buren, B. Buehrer, J. Bailey, J. Fritz.

*Second row:* Miss Ellis, C. Goetz, D. Haman, K. Bruce, H. Case, B. Doyle, G. Graf, Mrs. Rodda.

## AH! MEN!

Hodges . . . . .	Dorothy Haman
Hollingsworth. . . . .	Tom Van Buren
Junior. . . . .	Joan Fritz
Jetson . . . . .	Lois Schmelzer
Susan Betsford . . . . .	Kathleen Bruce
Major Betsford . . . . .	Colleen Goetz
Vicky Lauderbeck . . . . .	Burt Buehrer
Mr. Pfeffer. . . . .	Harold Iffland
Adele Betsford . . . . .	Gerry Graf
Lonny Esden . . . . .	Junior Bailey
Honorable Binks. . . . .	June Neuroth
Snell . . . . .	Dorothy Neuroth
Eleanor Hazlitt . . . . .	Betty Doyle
John Chadwick . . . . .	Gene Tabbert
Countess von Nau . . . . .	Helen Case
Herr Dittenhoffer . . . . .	Wendell Young



# Junior Play



*Standing:* Miss Ellis, I. Hazard, R. Simpson, J. Fischer, E. Moray, H. Schmidt, J. Demlow.

*Seated:* M. Berry, K. Tubbs, M. Wilt, V. Ford, J. Porter, D. Strobel.

## THE DAFFY DILLS

Richard Dill . . . . .	Russell Simpson
Carol Dill . . . . .	Kathryn Tubbs
Rodney Dill . . . . .	Eddie Moray
Doris . . . . .	Verlinda Ford
Dudley . . . . .	Henry Schmidt
Grandmother Dill . . . . .	Margaret Berry
Cousin Maude Maddox . . . . .	Imogene Hazard
Elaine Escott . . . . .	Joan Porter
Aimee Lovewell . . . . .	Jean Demlow
Pete Norton . . . . .	Jim Fischer
The Widow Woggles . . . . .	Marilyn Wilt
Arnica Jukes . . . . .	Dorothy Strobel
Director . . . . .	Miss Lorraine Ellis





*Sports*



## *Majorettes*



ALMA SLIKER

MARY LEE SHAFFER

NANCY MALZAHN

MARILYN TAGSOLD

PAULINE LIEVENS

BARBARA BRADSTRUM

## *Cheerleaders*

KATHLEEN BRUCE

MARLENE SCHOLL

VIRGINIA SNYDER

DOLORES HATCHER

GAYE JEAN SAXTON

BARBARA GOBLE





# Football



Row one: L. Ebright, D. Ahleman, W. Tuckerman, R. Rodesiler, B. Chandler, T. VanBuren, J. Bassett.

Row two: Coach Rodda, C. Piotter, W. Ford, H. Grinage, S. Saxton, J. Simpson, L. Kastel, Assistant Coach Lew.

Row three: Mgr. D. Sinclair, J. Snyder, R. Rothfuss, J. Fischer, E. Moray, D. Keller, E. Pfeifer, F. Deak, Mgr. R. Fischer.

Row four: R. Staup, K. Piotter, A. Crane, A. Klump, G. Houghtby, D. Butts, K. Saxton.

## SCHEDULE

Blissfield	6	Petersburg	7
Blissfield	7	Ida	0
Blissfield	0	Clinton	32
Blissfield	6	Hudson	21
Blissfield	7	Morenci	7
Blissfield	6	Bedford	0
Blissfield	31	St. Mary's	6
Blissfield	0	Tecumseh	18

Won 3

Tied 1

Lost 4





WALT TUCKERMAN  
End



HAL GRINAGE  
Back



CARL PIOTTER  
Guard



BOB CHANDLER  
Tackle



DICK RODESILER  
End



JIM FISCHER  
Back



STAN SAXTON  
End

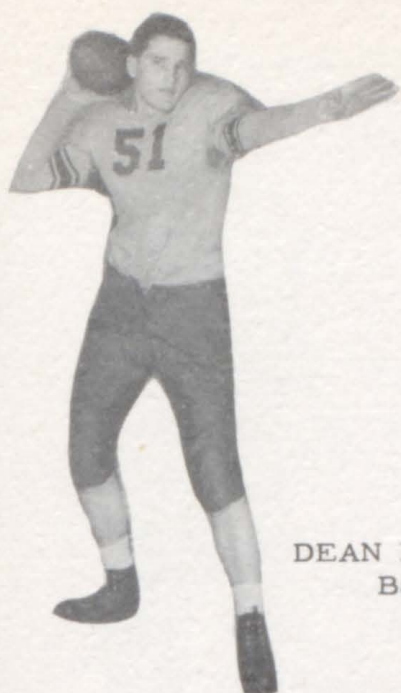


WILLIS FORD  
Center

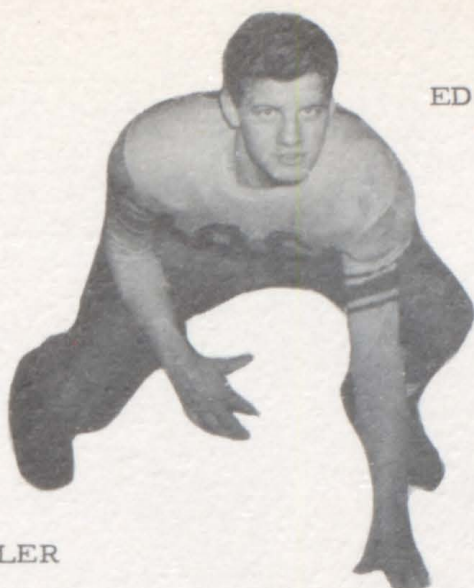


DICK ROTHFUSS  
Guard





DEAN KELLER  
Back



ED MORAY  
Guard



DON AHLEMAN  
End



JACK SIMPSON  
Tackle



LES EBRIGHT  
Tackle



JIM SNYDER  
Tackle

ROBERT RODDA  
Coach



GENE PFEIFER  
Back

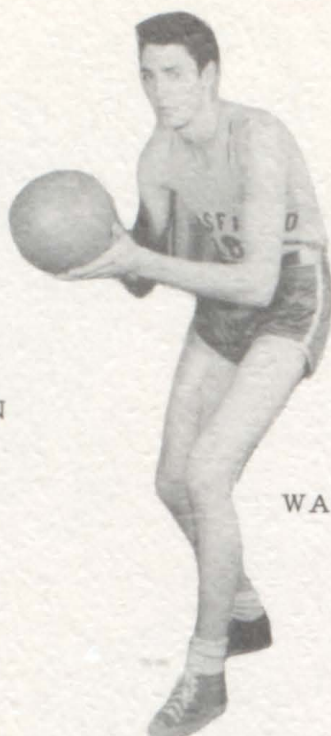


FRANK DEAK  
Back





RUSS SIMPSON  
Forward



WALT TUCKERMAN  
Forward



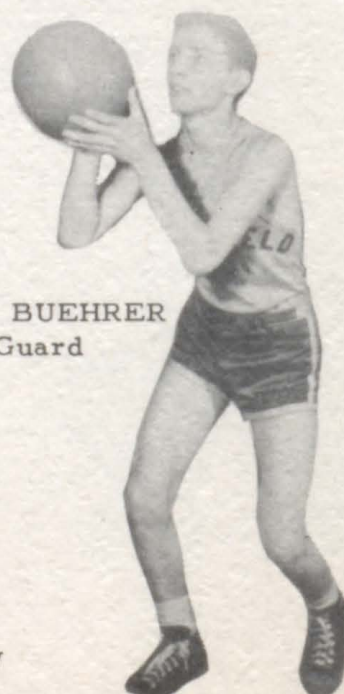
DICK RODESILER  
Center



JUNIOR BAILEY  
Guard



ROBERT LEW  
Coach



BURT BUEHRER  
Guard

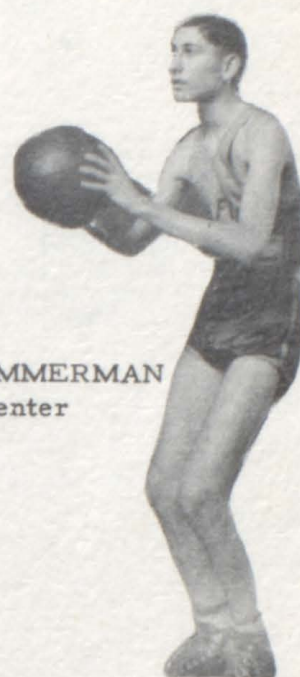




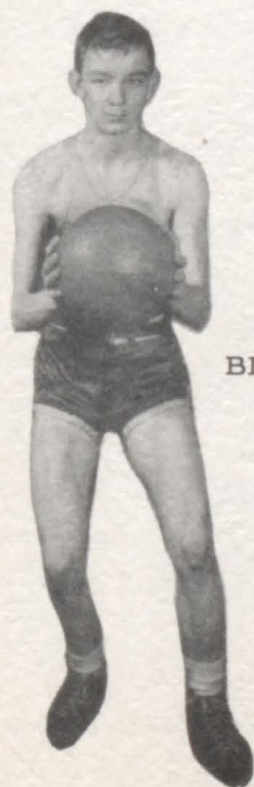
HAL GRINAGE  
Guard



DUKE BURGERMEISTER  
Guard



BOB ZIMMERMAN  
Center



BILL STAUP  
Forward



BOB GREW  
Guard



JIM BAUER  
Guard





*First row:* Mr. Rodda, Jim Bauer, Bob Zimmerman, Russ Simpson, Dick Rodesiler, Walt Tuckerman, Bob Grew, Mr. Lew.

*Second row:* Duke Burgermeister, Junior Bailey, Hal Grinage, Burt Buehrer, Bill Staup.

*Third row:* Gary Houghtby, Manager.

#### SCHEDULE

Blissfield,	31	. . .	Petersburg,	29
Blissfield,	46	. . . .	. Addison,	31
Blissfield,	50	. . . .	. Onsted,	36
Blissfield,	40	. . . .	. Clinton,	44
Blissfield,	38	. . . .	. Tecumseh,	25
Blissfield,	39	. . . .	. St. Mary's,	18
Blissfield,	30	. . . .	. Morenci,	25
Blissfield,	26	. . . .	. Hudson,	24
Blissfield,	41	. . . .	. St. Mary's,	19
Blissfield,	31	. . . .	. Addison,	19
Blissfield,	50	. . . .	Petersburg,	39
Blissfield,	45	. . . .	. Clinton,	41
Blissfield,	43	. . . .	. Tecumseh,	28
Blissfield,	36	. . . .	. Bedford,	27
Blissfield,	45	. . . .	. Morenci,	25
Blissfield,	34	. . . .	. Hudson,	27

L. C. A. A. C H A M P I O N S



Follow The Crowd To

*Newcombs*

"Say It With Meats"

THE  
BLISSFIELD STATE BANK

Compliments  
of  
SCHNEIDER'S GARAGE

HEADQUARTERS FOR HOBBYISTS  
Model Planes                      Engines  
Hobbyist's Tools                Balsa Wood  
Knives                              Racers  
Paints                               Ships

Exclusive in Blissfield  
  
Columbia and Decca Records  
Complete Stock of  
  
Classical  
  
Popular  
  
Westerns

WESTERN AUTO ASSOCIATE STORE  
Phone 44                      Blissfield

ON YOUR GUARD BOYS  
  
GOOD LUCK GIRLS  
  
(Someone said it's Leap Year)  
  
CHRIST'S PURE FOOD MARKET  
  
Where The Wise Economize



WOOD'S CLOTHING

L. D. WOOD, PROPRIETOR

MEN'S  
TOGGERY

DRY CLEANING  
AGENCY

PHONE 103M 128 S. LANE STREET

BLISSFIELD, MICHIGAN

COMPLIMENTS  
OF

ROST'S DRUG STORE

BEST WISHES

FROM

JUST RITE BAKERY

*Compliments  
of*

T A G S O L D F U R N I T U R E

S T O R E

AND

F U N E R A L H O M E

BLISSFIELD



COMPLIMENTS

OF

*Great Lakes* -  
SUGAR COMPANY

COMPLIMENTS

OF

*Lawrence's*  
JEWELRY STORE

Formerly of Blissfield

New Location

823 West Central Avenue

Toledo, Ohio



# Seeger's

THE STORE OF LASTING SATISFACTION

COMPLIMENTS  
OF

ATLANTIC & PACIFIC FOOD STORE

COMPLIMENTS  
OF

THE "SNAK BAR"



BLISSFIELD REFRIGERATION SERVICE

AND

HOME FREEZERS

Good Luck!

BLISSFIELD CONCRETE CO.

GAMBLES

George E. Fogel, Owner

Auto Parts and Supplies

Furniture, Appliances, etc.

"Ye Old Town Pump"

RESTAURANT

*Compliments  
of*

*Kie Kerbowy*



*Bailey's*  
JEWELRY STORE

"Everything in Jewelry"

COMPLIMENTS

OF

*Bailey's*  
DRUG STORE



COMPLIMENTS

OF

JASMUND'S SERVICE GARAGE

Congratulations

THE

JIPSON CARTER STATE BANK

REX'S CITIES SERVICE

THE AMERICAN GIRL

BEAUTY PARLOR

Compliments

International Trucks

Farmall Tractors

Refrigeration

Power Units

Tractors

*Wilt and Knoblauch*



ABE KERBAWY

Shoes for Men and Boys

Shoe Repairing

GOOD LUCK!

Plumbing

Heating

Compliments of

SPRUNK and LIEWERT

SPRUNK'S GROCERIES

Appliances

Electrical Supplies

COMPLIMENTS

OF

*Blissfield*  
Manufacturing Company

Quality Refrigeration Products

Blissfield, Michigan



Congratulations

to the Class of '48

STAVES'S 5¢ to \$1.00 STORE

BLISSFIELD CO-OPERATIVE CO.

Blissfield Ogden Riga Jasper

Grain, Seeds, Flour and Feed

Coal, Poultry, Farm Machinery

Custom Mixing

*Mann*  
FUNERAL HOME

208 Jefferson Street

Phone 341



# *H1-SPEED Service Station*

Batteries, Tires, Accessories, Oils and Greases

Lubrication Headquarters

Complete Brake Service

101 East Adrian Street

Phone 102

Blissfield, Michigan

BURNS MOTOR SALES

Dodge and Plymouth

Sales and Service

Telephone 48

Blissfield

LOAR'S APPLIANCE SHOP

Authorized G E Dealer

Full Line

of

Home Appliances

NAT'S PLACE

Shoe Repair

106 East Adrian Street

Congratulations

To The Class of '48

COMPLIMENTS  
OF

GOBLE LUMBER COMPANY



MOORE AND SEEBURGER

FORD

For 34 Years

"There's One In Your Future"

*Compliments  
of*

H. J. HOENIG SEED CO.

Congratulations to Graduates of 1948

THE BLISSFIELD ADVANCE

Read in More Than 1,500 Homes

Every Week

Good Wishes

to the

Senior Class

GEORGE KERBAWY

*Compliments  
of*

THE BLISSFIELD FURNACE CO.

Phone 325

Blissfield



BLISSFIELD LUMBER CO.

Building Materials

Milo Staup

Ralph Staup

Phone 18W

Blissfield

Best Wishes

T H E J O Y S H O P

Compliments

of

EDMUND'S SUPER MARKET

SCOTT-MC COMBS

Blissfield, Michigan

Featuring Nationally Advertised

Fashions For Women

Compliments

of

HUB OUTFITTERS, INC.

Adrian, Michigan

RADIO CENTRAL

104 S. Lane Street Phone 344M

Blissfield, Michigan

Television - Radios Service

Alumnus 1925

A. D. Roberts, Prop.

Compliments

of

MEYERS and REYNOLDS



BUSSING'S MARKET

Quality Meats  
Smoked and Fresh

Phone 192      Blissfield

Congratulations

MARK'S BARBER SHOP

"Walt"

"Al"

Compliments of

"Old Man Houghtby"

26 Years of Service

HOUGHTBY'S

MACHINE SHOP

General Machine Work

211 West Adrian St.

Phone 112J

Compliments of

Allis Chalmers Farm Equipment

Bolens and Gibson Garden Tractors

Enterprise Paints and Varnishes

Jacobson Water Systems

*The Banting Company*

W. H. Scholl, Mgr.

Blissfield

Phone 320



SPORTSMEN'S SUPPLY

on U S 223

Buy, Sell or Trade-Boats, Guns, Motors

Live Baits      Ammunition Reloading

Fishing and Hunting Licenses

Telephone 10M--Al Stock

*BEST WISHES*

*FROM*

THE NATIONAL BUNDLE TYER CO.

(Tying Machines

for

All Purposes)

*BEST WISHES*

*FROM*

BOB'S FRIENDLY SERVICE

"Don"

"Joe"

Good Luck!

PEE WEE RESTAURANT

Steaks - Chops

Short Orders

A Specialty to Your Liking

24 Hour Service - 6 Days a Week

Let Us Serve Your Pleasure



Congratulations, Class of '48

from

Ken

and

Don

KEN'S BARBER SHOP

208 South Lane Street

Blissfield, Michigan

COMPLIMENTS

OF

THE CHERRY NOOK

U S 223

Palmyra

COMPLIMENTS

OF

GULF SUPER SERVICE

"Bat"

"Burt"

Home of the Handy Square Bottles

Certified Quality

Dairy Products

*W. H. Driggs*  
DAIRY FARMS

Palmyra

Toledo



1948

"A Year To Be Remembered"

*Earl Heise*

Congratulations

To The Senior Class

From

*Richland Furs, Inc.*



Full Line of Beauty Service

HAZEL LANE'S

Beauty Shoppe

We Buy

ALFALFA

IRELAND ALFALFA MILLS, INC.

Phone 54

Blissfield

GEORGE DOYLE

Painting and Decorating

Phone 26R

Compliments

of

B L I S S F I E L D   D A I R Y

Compliments

of

*Handpakt Ice Cream  
Service*

409 Giles Avenue

Blissfield, Michigan

"Handpakt Makes a Tastier Product"







