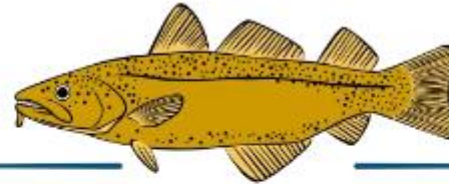




Emergency Preparedness

BARNSTABLE COUNTY



BARNSTABLE COUNTY

DEPARTMENT OF HEALTH AND ENVIRONMENT

Chip Reilly

EMERGENCY PREPAREDNESS SPECIALIST
BARNSTABLE COUNTY
DEPARTMENT OF HEALTH AND THE ENVIRONMENT

What is emergency preparedness?

Emergency Preparedness refers to the steps can you take to make sure you are safe: before, during, or after an emergency or natural disaster.

It is not intended to be scary!

Why is planning for emergencies important?

Local Emergency personnel can become overwhelmed

Lives, health, and the environment are at risk

Do you have a disability? Do you have medical considerations?

After an event, systems you rely on might not function

Landmarks you know may not be recognizable

Utilities like power, water, phone and gas may be disrupted

You might need to evacuate to a shelter

What to expect from the government

- Plan to be on your own for a few days.
- Know that we will be working on getting you assistance.
- Remember you are one of many who will be affected.

What you need to do

- Don't wait till its to late.
- Get informed on Hazards that threaten you
- Take an all-hazards Approach
- Have a plan
- Build a Kit
- Be Proactive not Reactive
- Be self sufficient

Types of local disasters

- Hurricanes
- Blizzards / Snowstorms
- Floods
- Drought
- Wildfires
- Northeaster
- Power Outages
- Health Emergencies

Three main areas of preparedness

BUILD A KIT

MAKE A PLAN

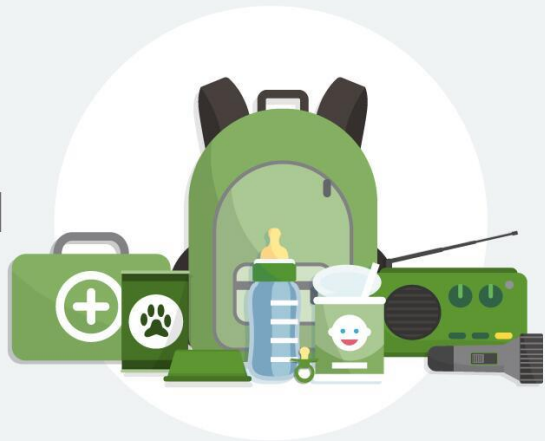
BE INFORMED



BUILD A KIT

- What does that mean?
- What should it contain?

Build a kit with everyone in mind



Types of kits

- Disaster Kit- if you must stay home during a disaster what is essential
- Evacuation/ Shelter kit-if you must leave home what do you need for a few days to be comfortable?
- Car Kit- have a small kit of essentials in your car in case you break down or get stuck
- Pet Kit- if you have pets, are you prepared to take care of them?



**DONT
FORGET
TO TAKE
YOUR
PILLS**

MAKE A PLAN



It is far better to have a plan that never gets used than to face uncertainty during an emergency.

Make a Plan

- What are you going to do IF?
- It should be written
- List what you need to do
- List what you need to bring
- Make sure to include phone numbers
- Everyone's plan is different

**YOU ARE NOT A BURDEN, DON'T BE AFRAID TO ASK FOR
HELP**

A series of plans

- Evacuation plan
- Shelter plan
- Medical plan
- Communications plan
- Plan for your pets



Evacuation and Shelter Plans

- If you must leave your home, where will you go and how will you get there?
- Do you have 3 days worth of belongings?
- Do you have your medications?
- Do you know where you are going?
- What is your evacuation route?

Medical Plan

- Do you have any special medical needs?
- Do your medical providers have emergency plans and back up providers?
- If you have a communication or other type of disability that requires support to communicate with you?
- Determine any special assistance you may need.
- Make a list of your medications

Communication Plan

- Make sure your friends and family know where you are
- Write down a communications plan
- How will you contact family and friends?

A "Ready Family Emergency Plan" form with a large red "Emergency Contact List" overlay. The form includes sections for "Family Emergency Plan" and "Emergency Contact List". The "Emergency Contact List" section has columns for "Name", "Address", "Phone Number", "Cell Phone Number", "Email Address", and "Relationship". The form also includes a "Ready" logo and a green checkmark.

BE INFORMED

- Emergency alerts and warnings- local, state , federal
- Internet- only government sites
- Radio
- Weather radio
- Local news
- 211 hotline
- BEWARE of SCAMMERS –
 - When in doubt lock them out!

Wireless Emergency Alerts
Can Save Your Life



Do you need assistance?

- Special Needs Registry- local communityEversource registry
- Kept confidential for emergency purposes only.
- It is a priority list not a guarantee!

Evacuations

- The Do's and Don'ts of evacuating.
 - – When do you evacuate?
 - – Stay on Main Roads
 - – Avoid Roads with streams or bridges
 - – Know 2 ways to get out and 2 ways to get to where your going
 - – Get fuel early
 - – Carpool
 - – Don't Wait!



Sheltering

- Regional shelter system



What is a shelter really like?



Pets

- Don't stay because of your pets.
- • Where can they go?
- • What you need to bring.
- • Who can come ?
- • Alternative Sites

PETS IN SHELTERS

For the well-being of people who turn to the Red Cross for help after a disaster, there needs to be physical space between animals and people.

The Red Cross works with animal welfare groups to ensure shelter residents have a place for their pets.

Service animals may stay with their owner in Red Cross shelters.



DO YOU HAVE A BETTER PLACE TO GO?

- Regional shelters are a shelter of last resort. They are lifeboats, not cruise ships.
- Talk to family and friends before emergencies to support each other!
- You are not a burden, ask for help

After the Disaster

- When can I return home?
- • Can I get my stuff?
- • Where will I go if my house is ruined?
- • Is insurance going to pay?

Will help arrive

Not for at least 72 hours

- Water Distribution Site
- • MRE's -Commodities Distribution
- • Medications
- • Trailers

Things to remember

- 1. Know your hazards
- 2. Build a Kit
- 3. Make a Plan
- 4. Stay Informed

QUESTIONS?

- [READY.GOV](https://www.ready.gov)
- AMERICAN RED CROSS
- TOWN EMERGENCY MANAGERS
- BARNSTABLE COUNTY