

# Industry and Employment - Center Harbor, NH

Industry Name	Center Harbor, NH	Counties Belknap County	States New Hampshire	Entire Country United States
Construction	16%	10%	8%	7%
Health Care & Social Assistance	14%	16%	16%	15%
Other Services (excl Public Administration)	9%	5%	4%	5%
Public Administration	9%	5%	4%	5%
Manufacturing	7%	11%	14%	11%
Retail Trade	7%	13%	11%	10%
Finance & Insurance	6%	4%	5%	5%
Educational Services	6%	10%	10%	10%
Accommodation & Food Services	6%	5%	4%	6%
Professional/Scientific/Tech Services	5%	6%	8%	8%
Admin, Support, Waste Management Services	5%	4%	4%	4%
Agriculture, Forestry, Fishing, Hunting	3%	1%	1%	1%
Wholesale Trade	2%	1%	2%	3%
Real Estate	2%	3%	2%	2%
Transportation & Warehousing	1%	2%	3%	5%
Utilities	1%	0%	1%	1%
Information	1%	1%	2%	2%
Arts, Entertainment & Recreation	1%	1%	1%	2%
Mining, Quarrying, Oil & Gas Extraction	0%	0%	0%	1%
Management of Companies/Enterprises	0%	0%	0%	0%

## Employment



66%

White Collar



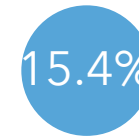
23%

Blue Collar



11%

Services



Unemployment  
Rate

## Businesses



83

Total Businesses



704

Total Employees



No High School  
Diploma



23%

High School  
Graduate



26%

Some College



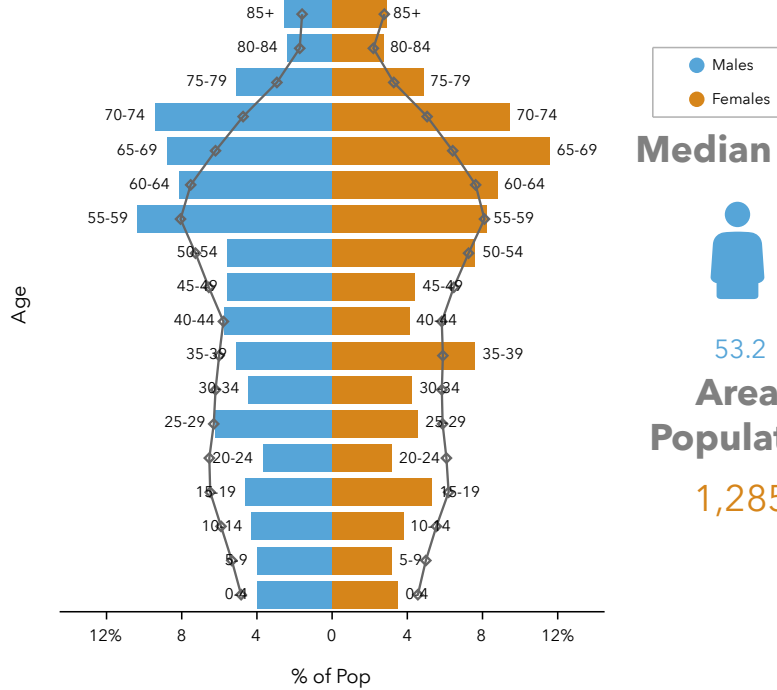
48%

Bachelor's/Grad/Prof Degree

## Educational Attainment

# Population and Age - Center Harbor, NH

## Age Pyramid



Dots show comparison to New Hampshire

## Median Age

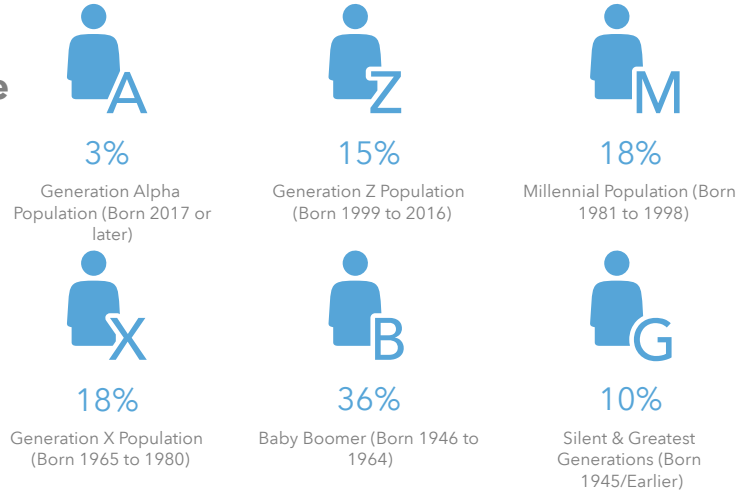


53.2

## Area Population

1,285

## 2020 Generational Makeup



## Tapestry Segments



6C

### The Great Outdoors

551 households

100.0%

of Households

### Population Group

### Growth Rate

2000-2010 Population: Annual Growth Rate (U.S. Census)	0.96%
2010-2020 Population: Annual Growth Rate (Esri)	1.56%
2020-2025 Population: Annual Growth Rate (Esri)	1.17%

# Housing - Center Harbor, NH

## Housing Statistics



\$388,710

Median Home Value



\$11,979

Average Spent on Mortgage & Basics



\$880

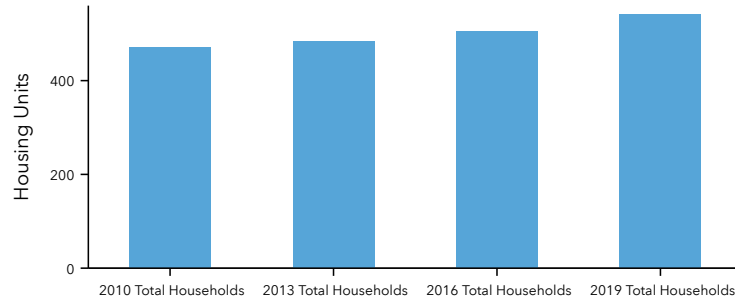
Median Contract Rent



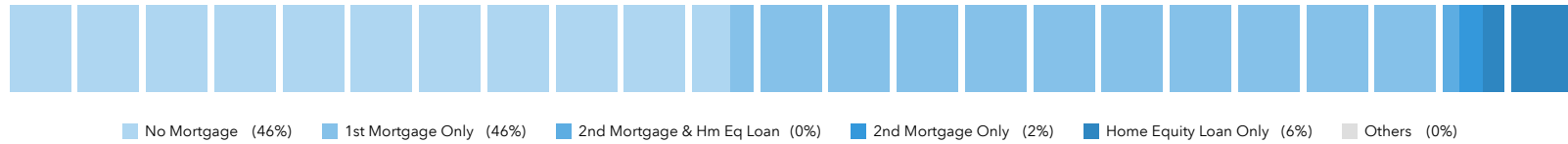
2.30

2020 Average Household Size (Esri)

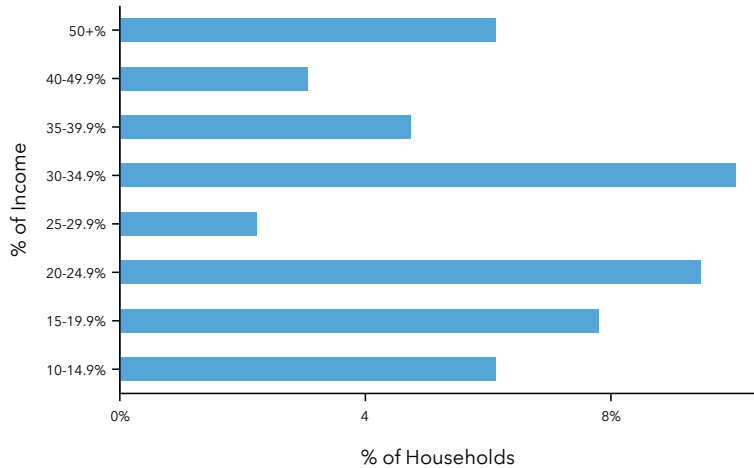
## Total Households 2010 -2019



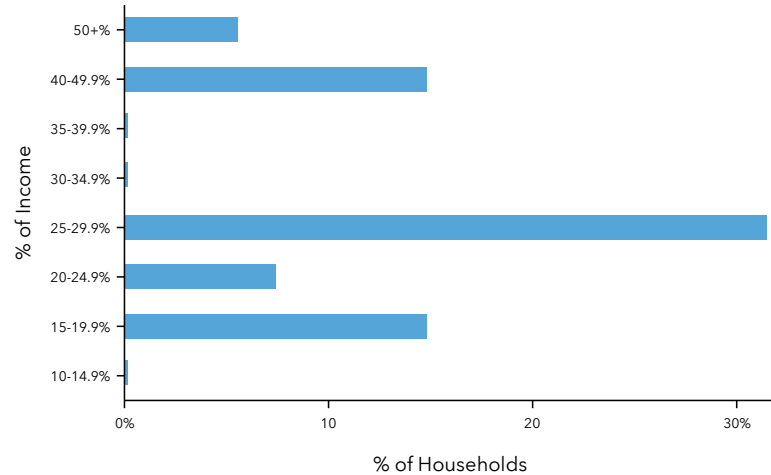
## Mortgage Spectrum



## Mortgage Payments as a % of Income



## Rent as a % of Income



# Income - Center Harbor, NH

## 2020 HH Net Worth



\$261,967

Median Net Worth



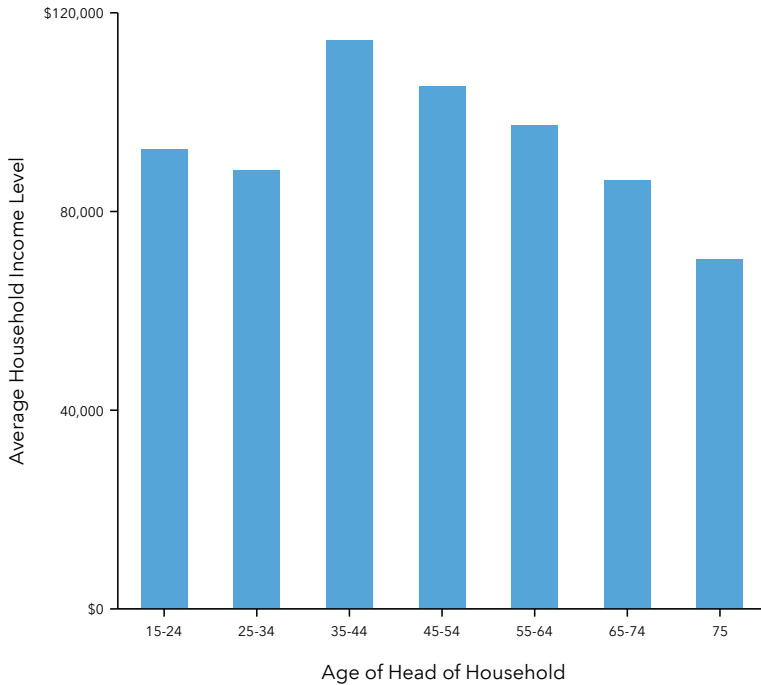
\$1,033,133

Average Net Worth

## Income Statistics

	Center Harbor, NH	Counties Belknap County	States New Hampshire	Entire Country United States
2020 Per Capita Income	\$39,842	\$33,374	\$39,400	\$34,136
2020 Median Household Income	\$69,850	\$63,522	\$75,181	\$62,203
2020 Average Household Income	\$92,870	\$81,469	\$98,779	\$90,054

## 2020 Income by Age



## 2020 Household Income

