

Industry and Employment - Gilford, NH

Industry Name	Gilford, NH	Counties Belknap County	States New Hampshire	Entire Country United States
Health Care & Social Assistance	18%	16%	16%	15%
Educational Services	15%	10%	10%	10%
Retail Trade	14%	13%	11%	10%
Professional/Scientific/Tech Services	7%	6%	8%	8%
Manufacturing	6%	11%	14%	11%
Finance & Insurance	6%	4%	5%	5%
Construction	5%	10%	8%	7%
Other Services (excl Public Administration)	5%	5%	4%	5%
Public Administration	5%	5%	4%	5%
Admin, Support, Waste Management Services	4%	4%	4%	4%
Accommodation & Food Services	4%	5%	4%	6%
Real Estate	3%	3%	2%	2%
Agriculture, Forestry, Fishing, Hunting	2%	1%	1%	1%
Transportation & Warehousing	2%	2%	3%	5%
Information	2%	1%	2%	2%
Arts, Entertainment & Recreation	2%	1%	1%	2%
Wholesale Trade	1%	1%	2%	3%
Mining, Quarrying, Oil & Gas Extraction	0%	0%	0%	1%
Utilities	0%	0%	1%	1%
Management of Companies/Enterprises	0%	0%	0%	0%

Employment



74%

White Collar



16%

Blue Collar



10%

Services



Unemployment Rate

Businesses



443

Total Businesses



3,737

Total Employees



No High School Diploma



27%

High School Graduate



30%

Some College



40%

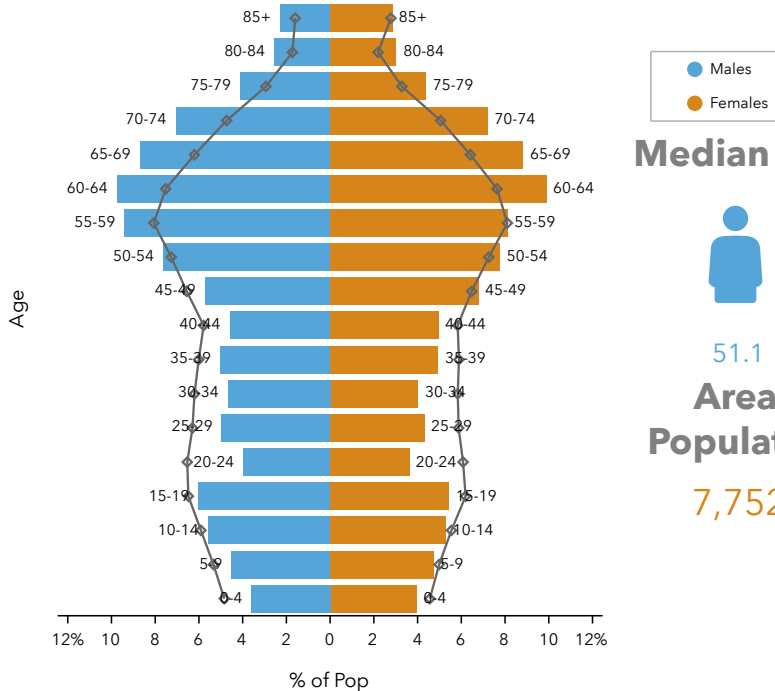
Bachelor's/Grad/Prof Degree

Educational Attainment

Source: This infographic contains data provided by Esri, Esri and Infogroup, U.S. Census, American Community Survey (ACS), Esri and Bureau of Labor Statistics. The vintage of the data is 2010, 2020, 2025, 2014-2018.

Population and Age - Gilford, NH

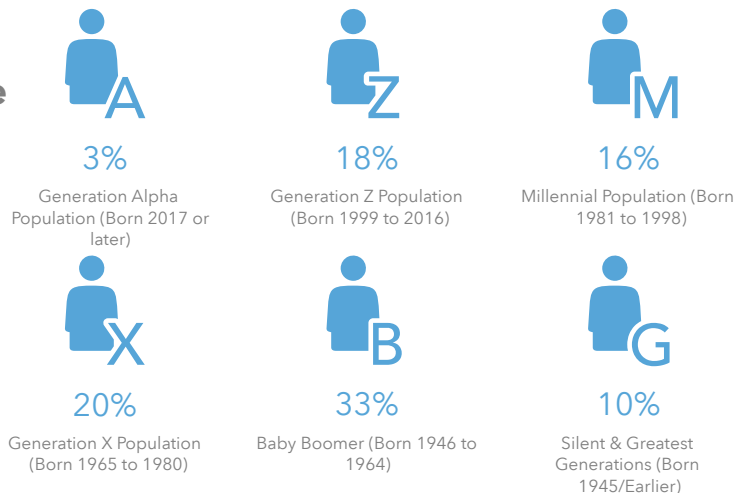
Age Pyramid



Dots show comparison to New Hampshire

Population Group	Growth Rate
2000-2010 Population: Annual Growth Rate (U.S. Census)	0.46%
2010-2020 Population: Annual Growth Rate (Esri)	0.82%
2020-2025 Population: Annual Growth Rate (Esri)	0.74%

2020 Generational Makeup



Median Age



51.1

Area Population

7,752

Tapestry Segments

	Comfortable Empty Nesters 1,375 households	42.2% of Households
	Green Acres 662 households	20.3% of Households
	The Great Outdoors 627 households	19.3% of Households

Housing - Gilford, NH

Housing Statistics



\$268,245

Median Home Value



\$12,425

Average Spent on Mortgage & Basics



\$881

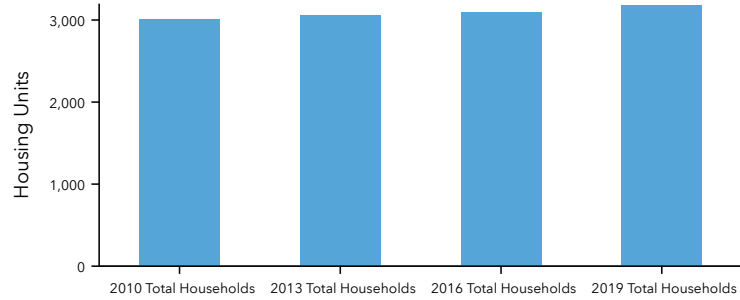
Median Contract Rent



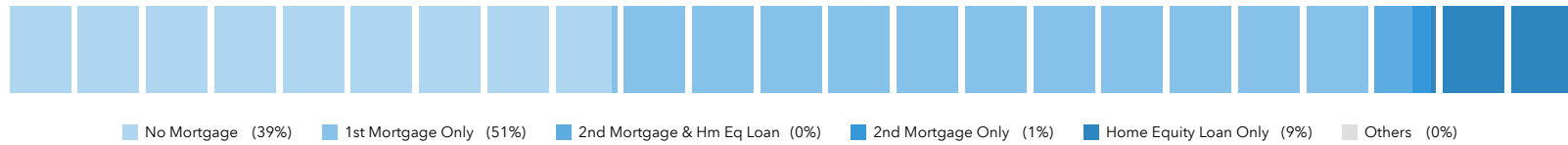
2.38

2020 Average Household Size (Esri)

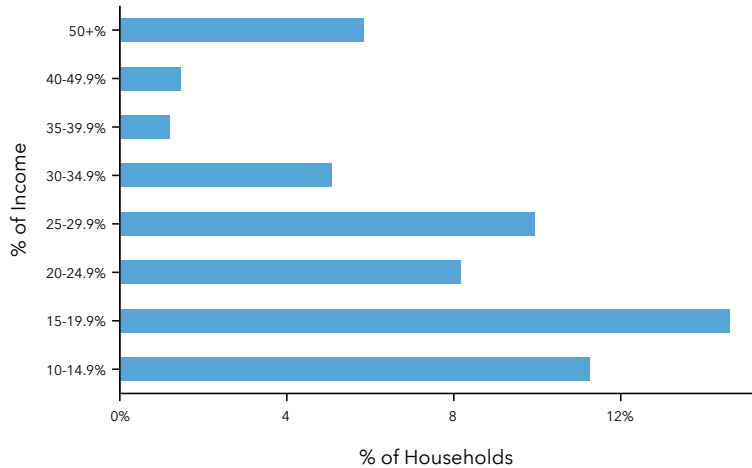
Total Households 2010 -2019



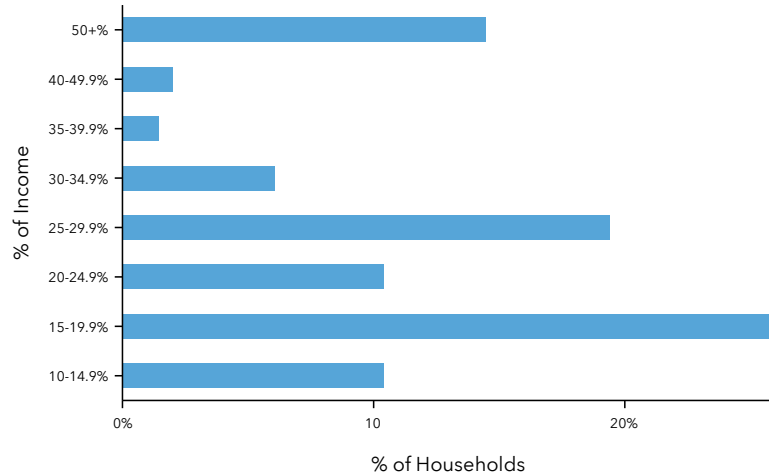
Mortgage Spectrum



Mortgage Payments as a % of Income



Rent as a % of Income



Income - Gilford, NH

2020 HH Net Worth



\$237,665

Median Net Worth



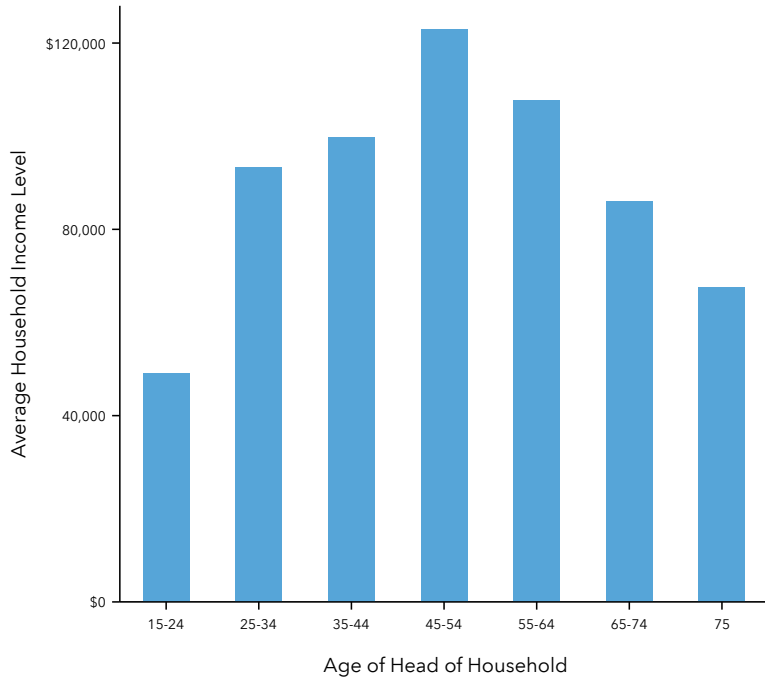
\$1,141,691

Average Net Worth

Income Statistics

	Gilford, NH	Counties Belknap County	States New Hampshire	Entire Country United States
2020 Per Capita Income	\$40,664	\$33,374	\$39,400	\$34,136
2020 Median Household Income	\$69,285	\$63,522	\$75,181	\$62,203
2020 Average Household Income	\$96,784	\$81,469	\$98,779	\$90,054

2020 Income by Age



2020 Household Income

