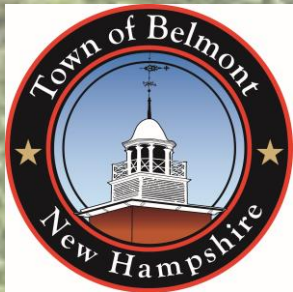
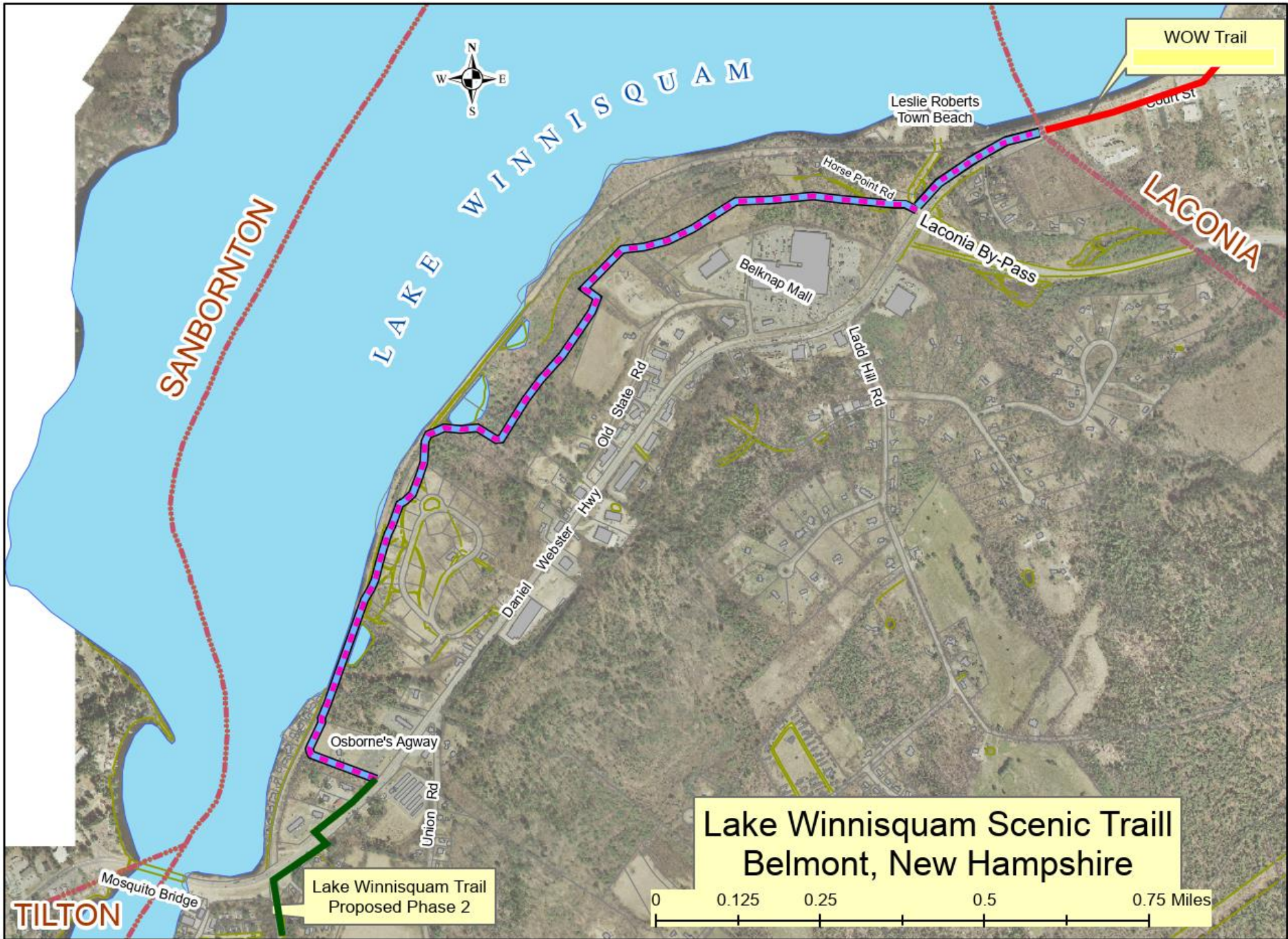


Lake Winnisquam Scenic Trail Phase 2

Transportation Alternatives
Program - Round 4

April 2021





WOW Trail

LACONIA

LAKE WINNISQUAM

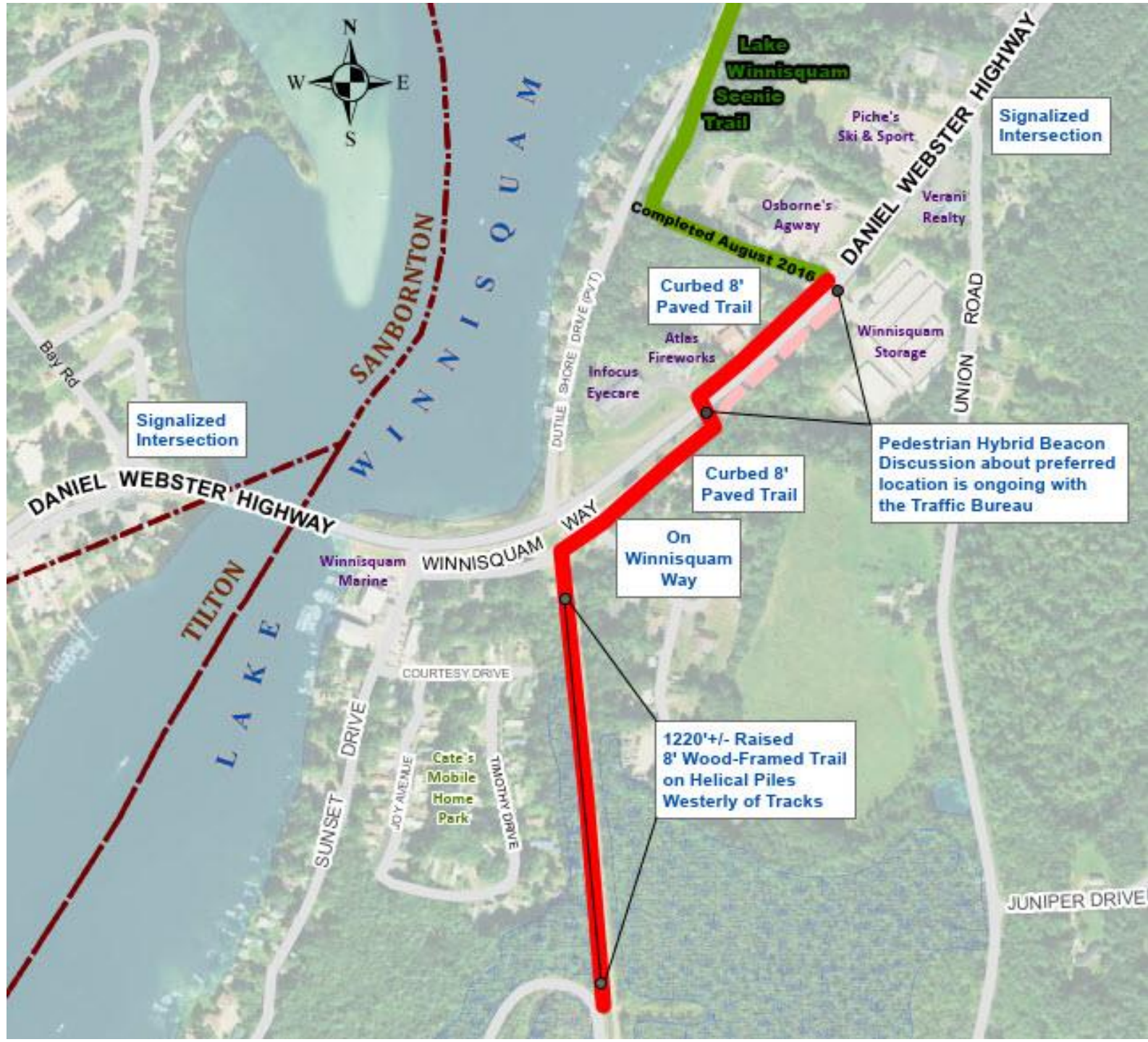
SANBORNTON

Lake Winnisquam Scenic Trail Belmont, New Hampshire

0 0.125 0.25 0.5 0.75 Miles

Lake Winnisquam Trail
Proposed Phase 2

TILTON



Lake Winnisquam Scenic Trail

DANIEL WEBSTER HIGHWAY

Signalized Intersection

Piche's Ski & Sport
Osborne's Agway
Verani Realty

Completed August 2016

Curbed 8' Paved Trail

Atlas Fireworks
Infocus Eyecare

UNION ROAD

Winnisquam Storage

Signalized Intersection

DANIEL WEBSTER HIGHWAY

Pedestrian Hybrid Beacon Discussion about preferred location is ongoing with the Traffic Bureau

Curbed 8' Paved Trail

On Winnisquam Way

WINNISQUAM WAY

Winnisquam Marine

TILTON LAKE

COURTESY DRIVE

SUNSET DRIVE

JOY AVENUE

Cate's Mobile Home Park

TIMOTHY DRIVE

1220'+/- Raised 8' Wood-Framed Trail on Helical Piles Westerly of Tracks

JUNIPER DRIVE



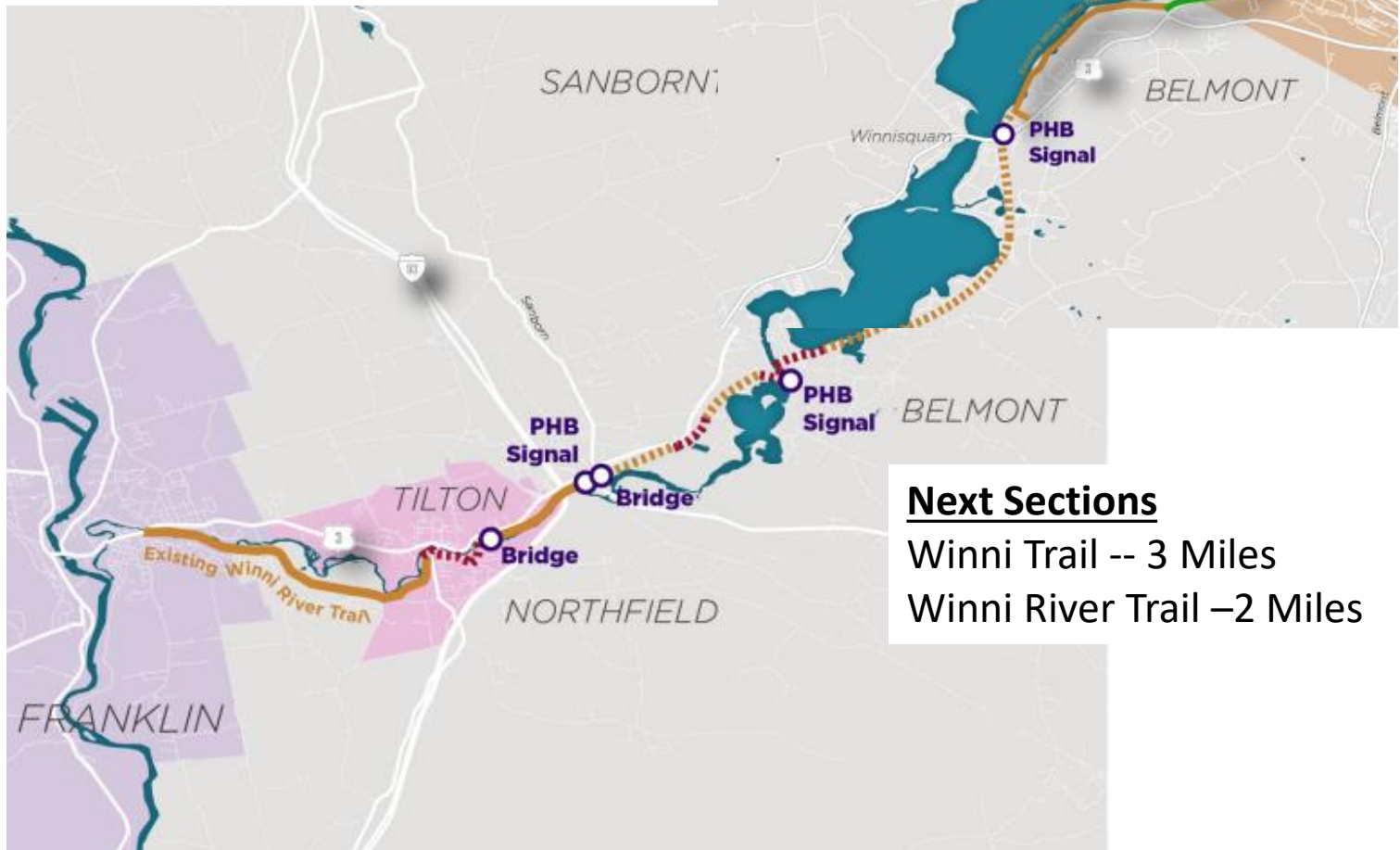


Project Connectivity

WOW Trail

Winni Trail

Winnipisaukee River Trail



Next Sections

Winni Trail -- 3 Miles

Winni River Trail -- 2 Miles