

The 22nd Century Library

Embracing Heritage While Planning for the Next Hundred Years

Placework

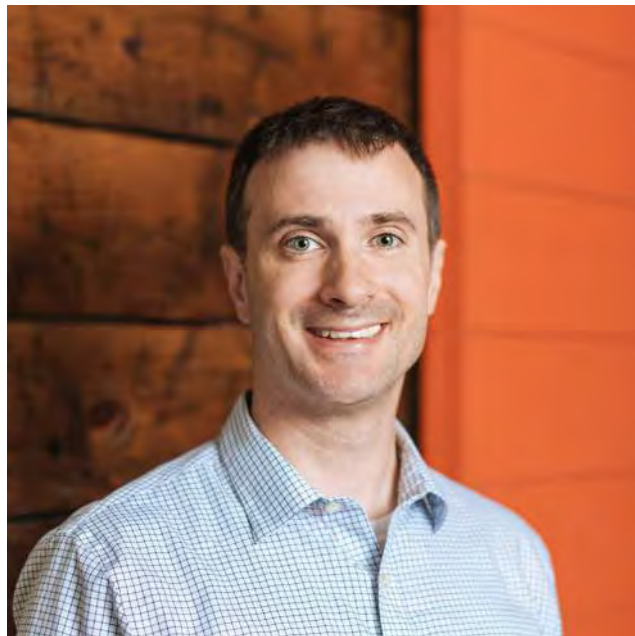
ABOUT US



ABOUT US

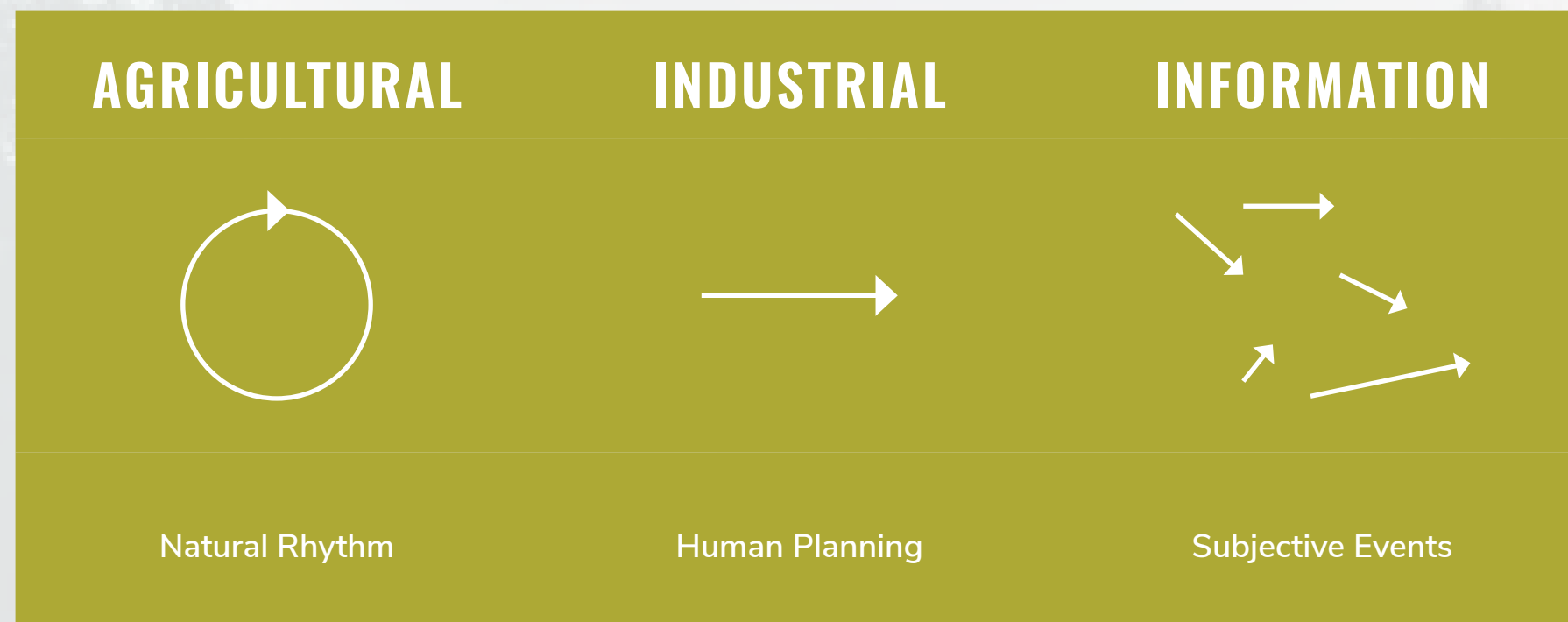


Liz Nguyen is inspired by the intersection of culture and construction, and a systems-thinking perspective informs her daily work as project manager at Placework. Recent projects include library planning studies for the Wiggin Library in Stratham and the Somersworth Library.



Josh Lacasse is an architect with a passion for adaptive reuse of existing buildings to confront new requirements regarding technology, climate, and social issues. His experience spans public, K-12, independent school, higher education, and special collections libraries.

TIME FRAMES



FROM STEFAN JUNESTRAND (2004)

OSLO FUTURE LIBRARY

ARTIST KATIE PATERSON



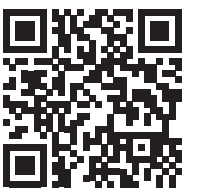
2014



100
YEARS



TIMBER HARVESTED TO BUILD THE “SILENT ROOM” TO HOUSE TEXTS CONTRIBUTED ANNUALLY
TREES PLANTED IN 2014 TO BE HARVESTED AND TURNED INTO AN ANTHOLOGY OF BOOKS IN 2114



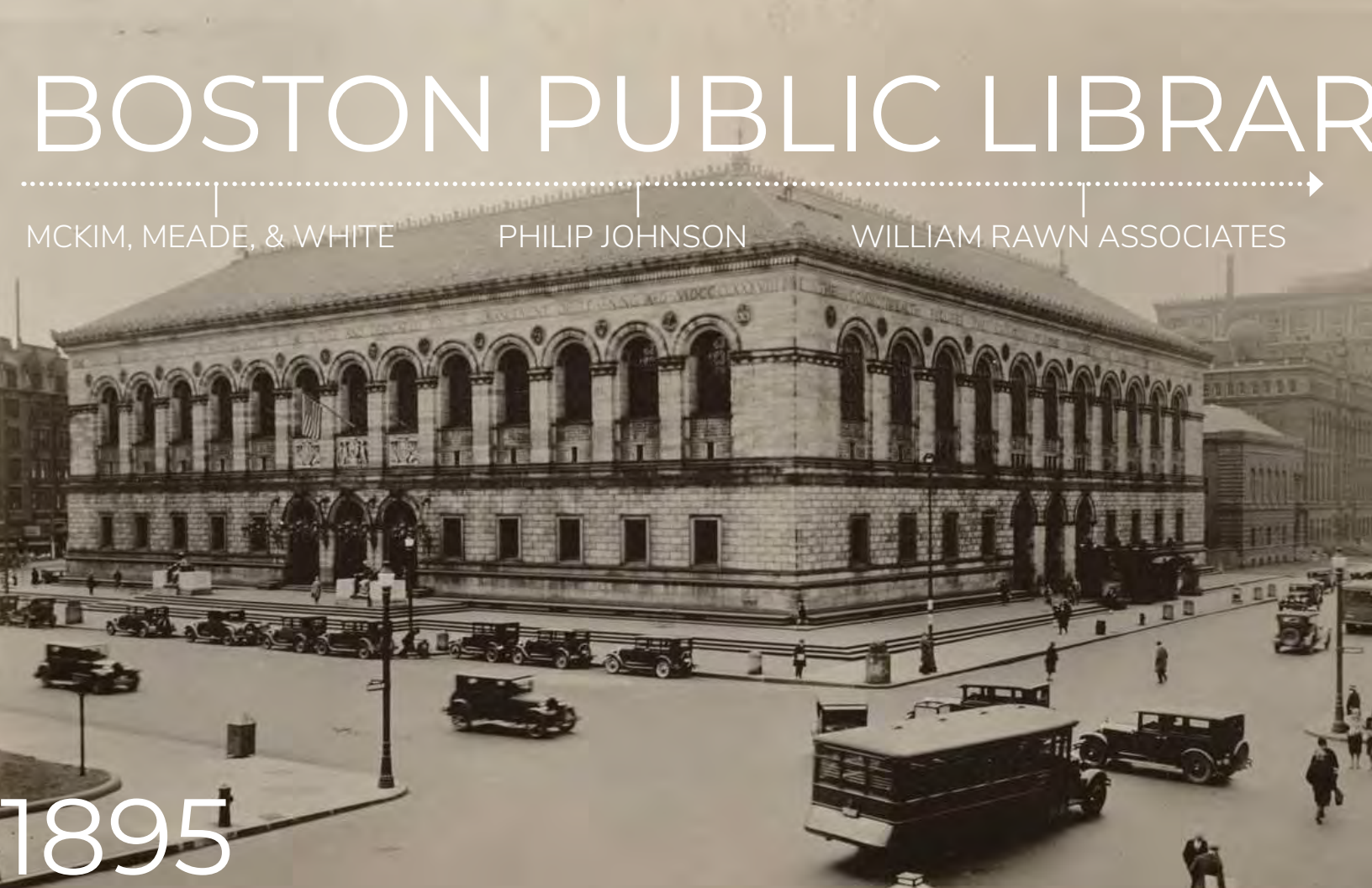
www.futurelibrary.no

“Future Library has nature, the environment at its core — and involves ecology, the interconnectedness of things, those living now and still to come. It questions the present tendency to think in short bursts of time, making decisions only for us living now. The timescale is one hundred years, not vast in cosmic terms. However, in many ways the human timescale of one hundred years is more confronting. It is beyond many of our current lifespans, but close enough to come face to face with it, to comprehend and relativise.”

Katie Paterson
(Artist)



www.futurelibrary.no



1895
1972



BOSTON PUBLIC LIBRARY

MCKIM, MEADE, & WHITE

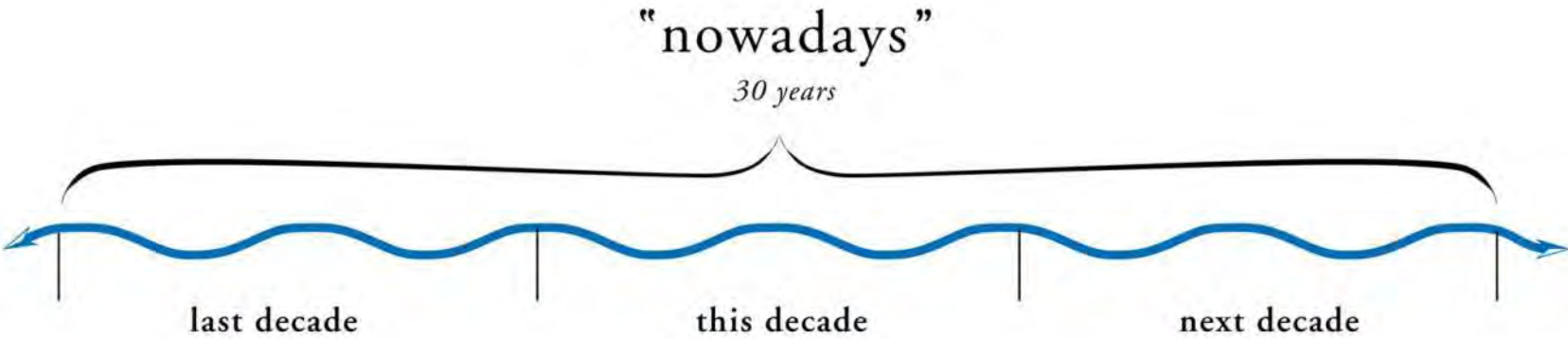
PHILIP JOHNSON

WILLIAM RAWLIN ASSOCIATES

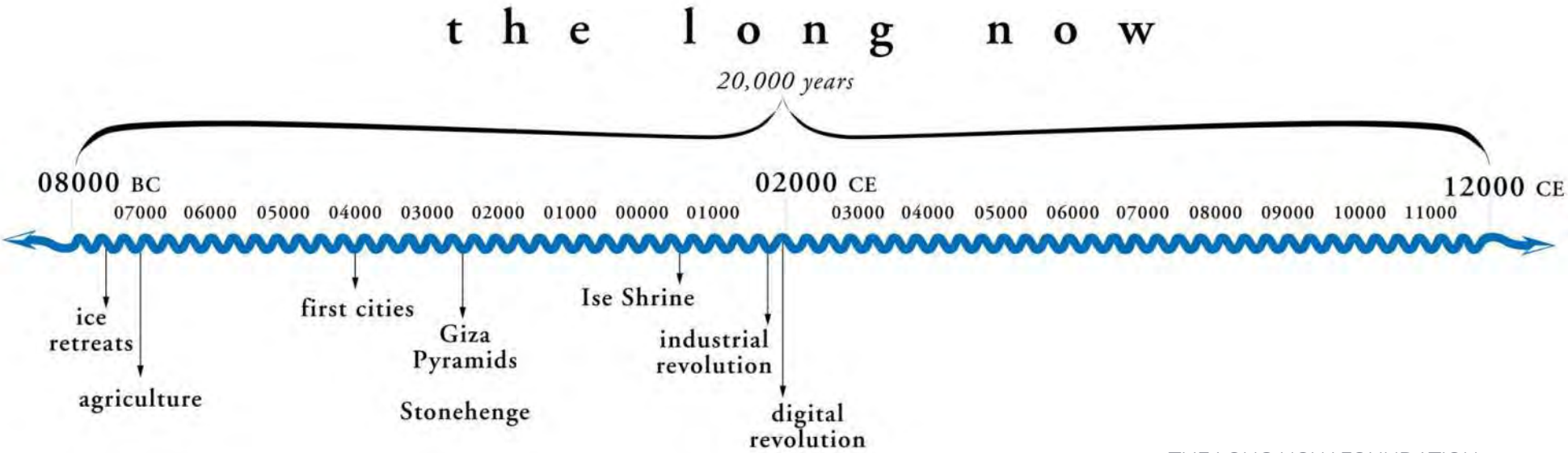


2016

THE LONG NOW

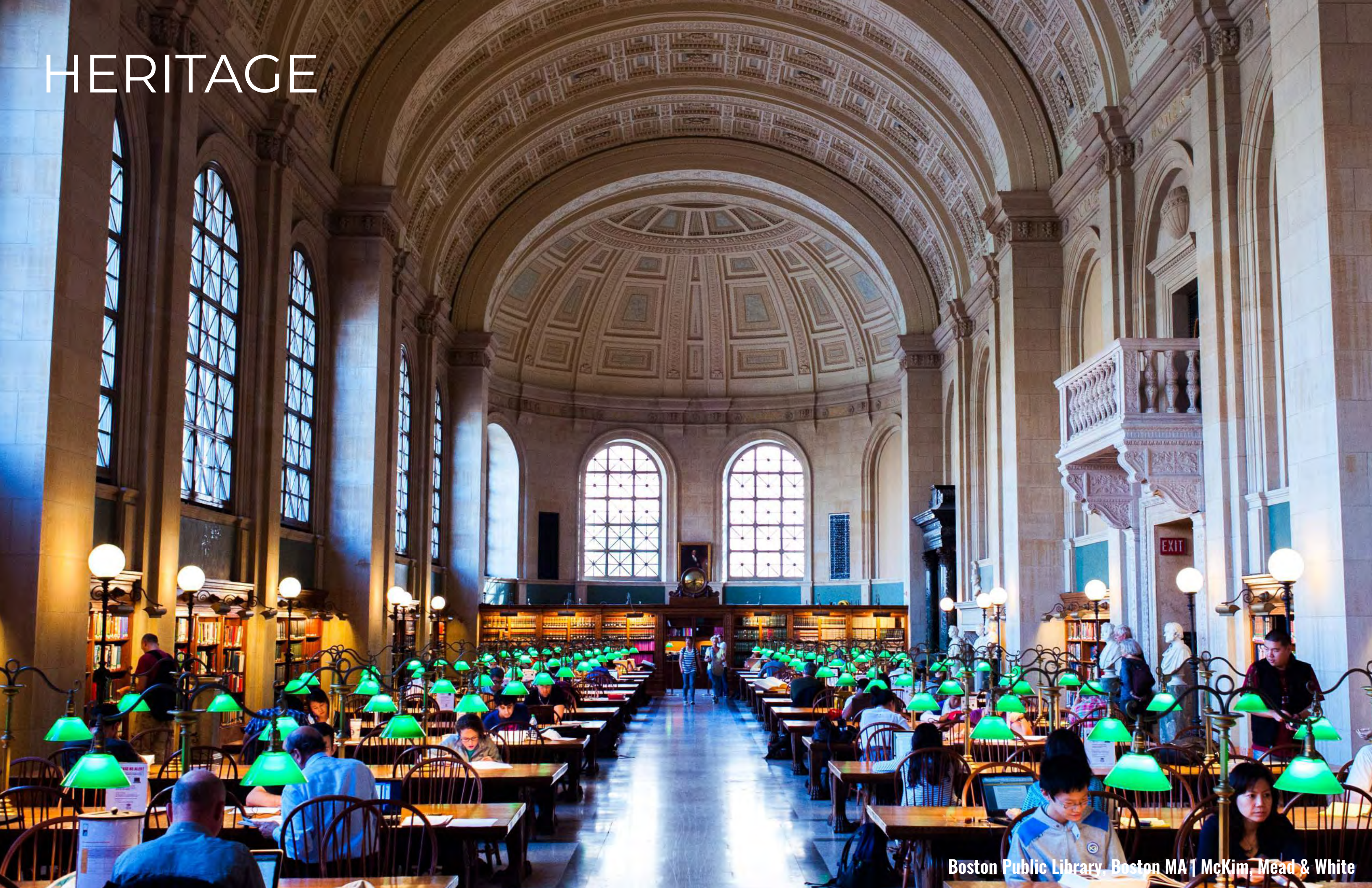


INSERT YOUR
LIBRARY HERE



CHALLENGES + NEW PARADIGMS

HERITAGE



HERITAGE



CONNECTION TO SURROUNDINGS



WAYFINDING



PARTNERSHIPS



Taylor Street Branch Apartments & Roosevelt Branch Library, Chicago, IL | Skidmore, Owings, and Merrill

COMMUNITY CATALYST



RESILIENCE

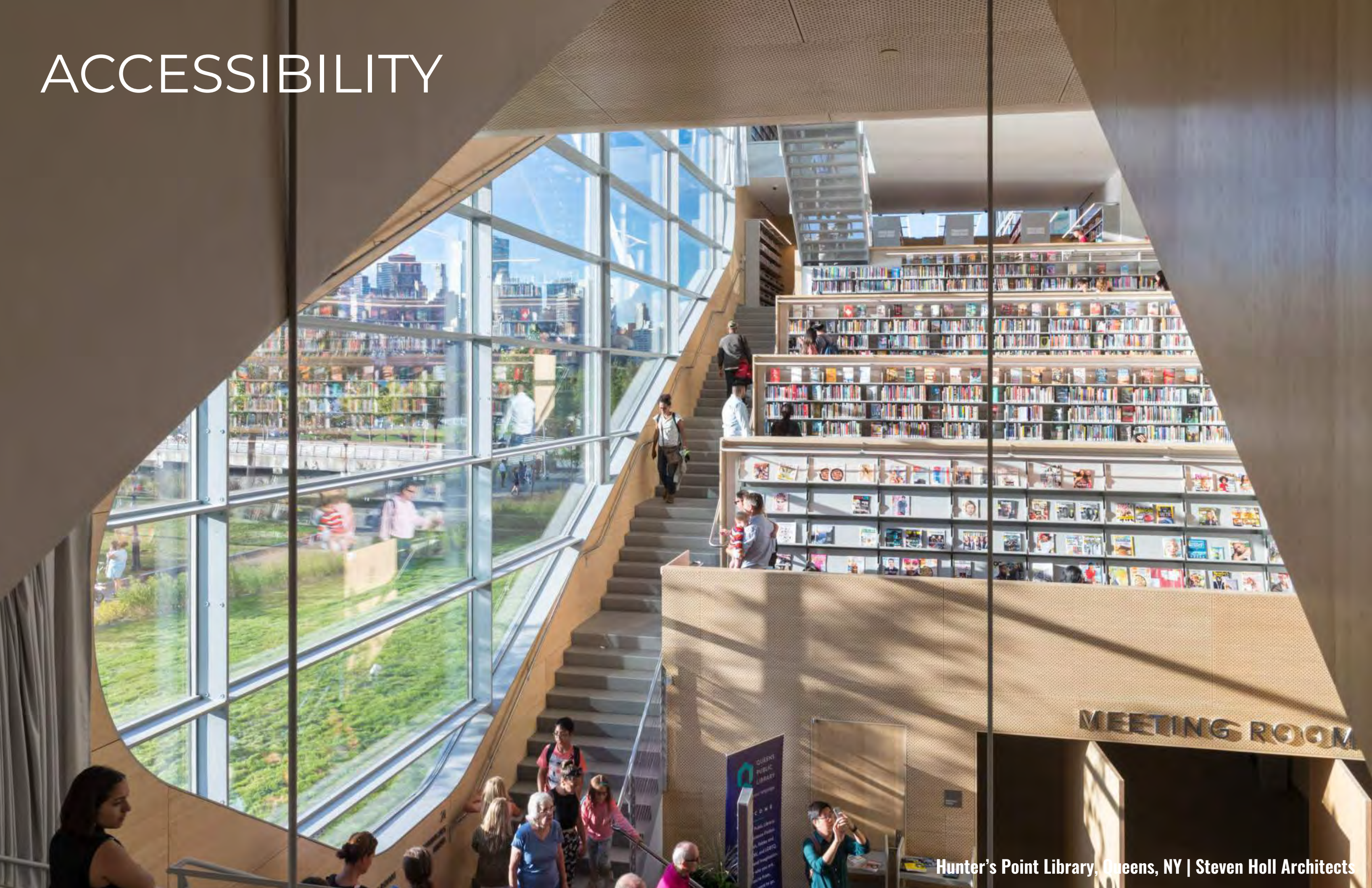


SPACE

Rice Public Library, Kittery ME | Simons Architects



ACCESSIBILITY



MEETING ROOM



PLACEMAKING

TECHNOLOGY



AUTOMATION



STEWARDSHIP



Beinecke Rare Book & Manuscript Library, Yale University | Skidmore, Owings & Merrill

CASE STUDIES

MADBURY PUBLIC LIBRARY

MADBURY, NH



NH LIBRARY TRUSTEES ASSOCIATION
6.5.2024

Placework
ARCHITECTURE • PLANNING

MADBURY PUBLIC LIBRARY

MADBURY, NH



PLAN NH MERIT AWARD 2020
AIA NEW HAMPSHIRE MERIT AWARD 2021

MADBURY PUBLIC LIBRARY

MADBURY, NH



NH LIBRARY TRUSTEES ASSOCIATION
6.5.2024

Placework
ARCHITECTURE • PLANNING

MADBURY PUBLIC LIBRARY

MADBURY, NH



MADBURY PUBLIC LIBRARY

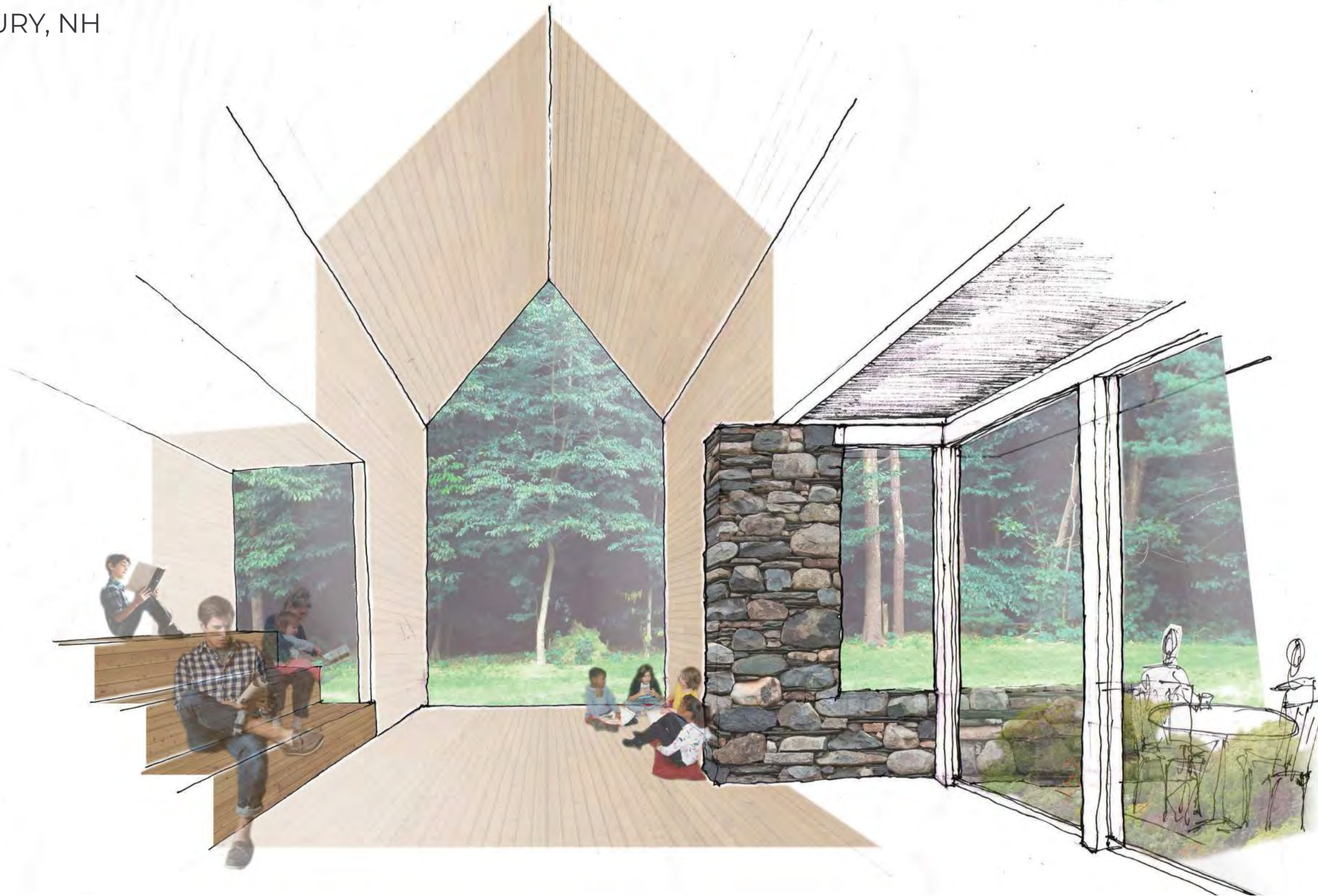
MADBURY, NH



3,800 gross square feet

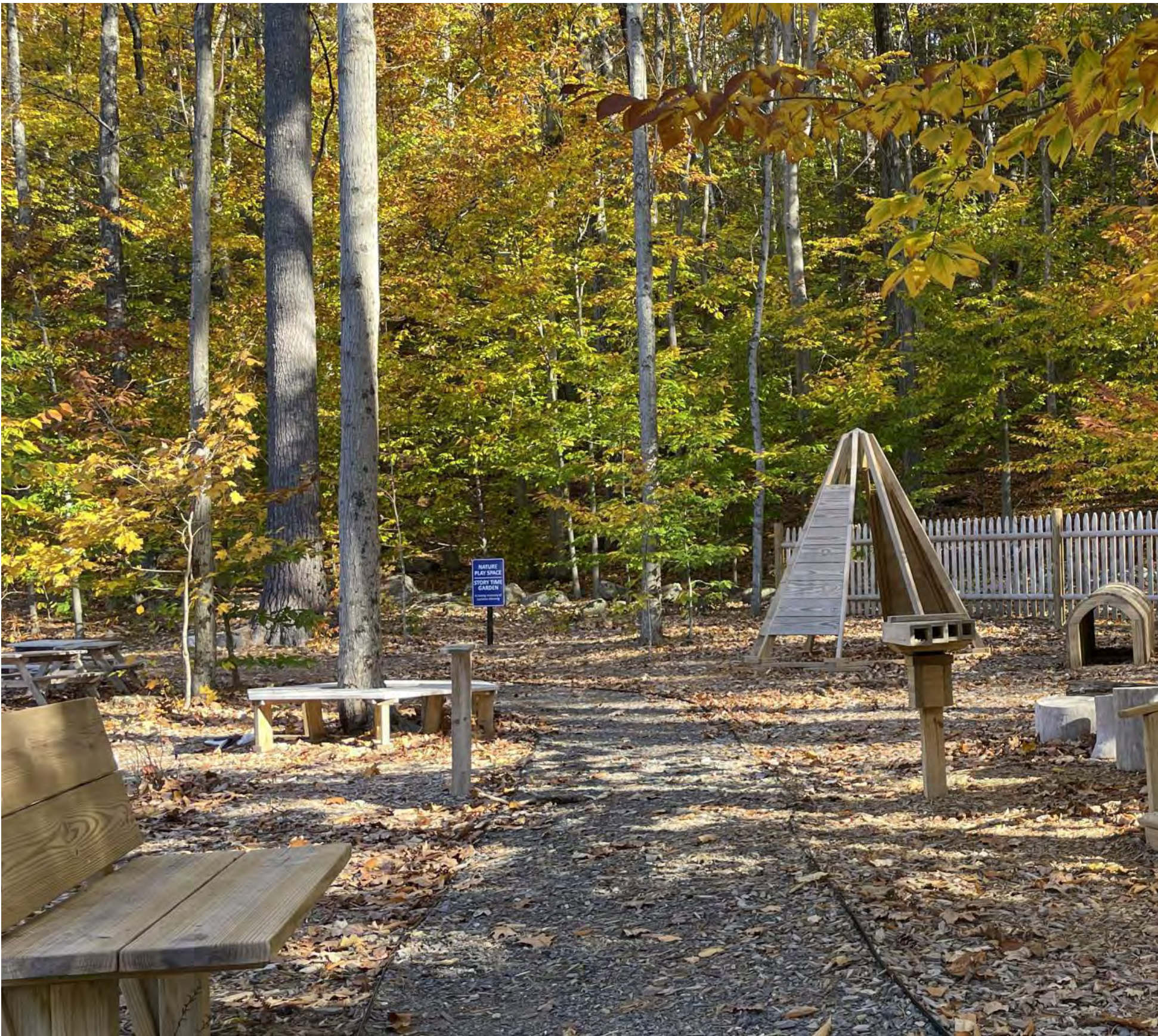
MADBURY PUBLIC LIBRARY

MADBURY, NH



MADBURY PUBLIC LIBRARY

MADBURY, NH



SOMERSWORTH PUBLIC LIBRARY

EXISTING CONDITIONS



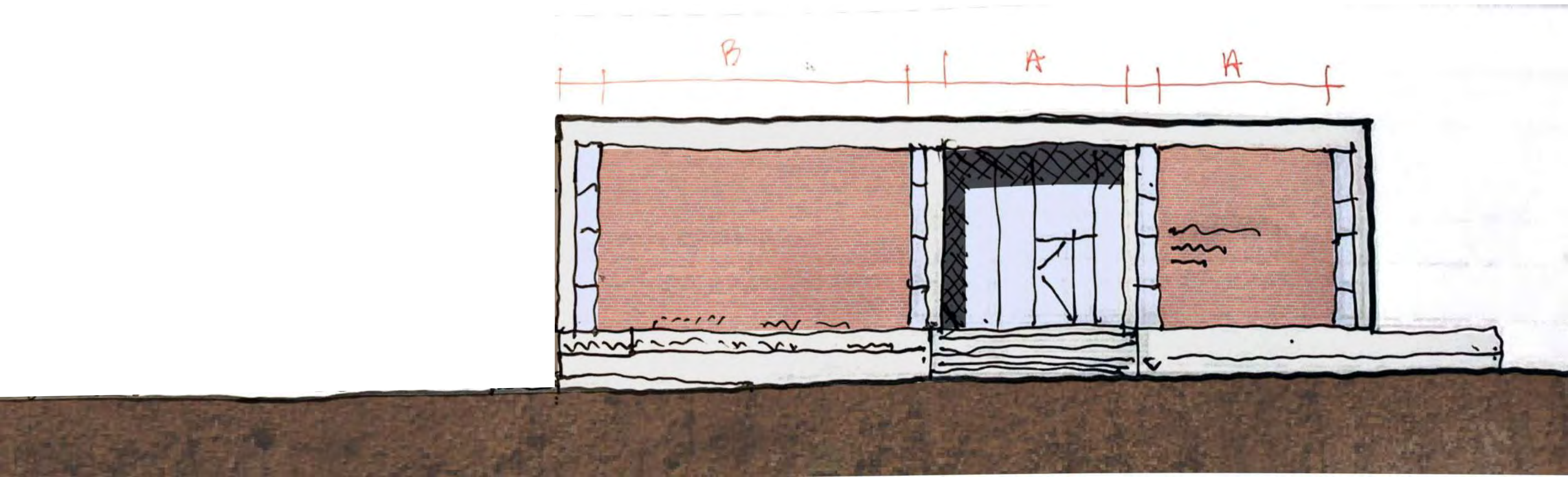
SOMERSWORTH PUBLIC LIBRARY

EXISTING CONDITIONS



SOMERSWORTH PUBLIC LIBRARY

EXISTING CONDITIONS



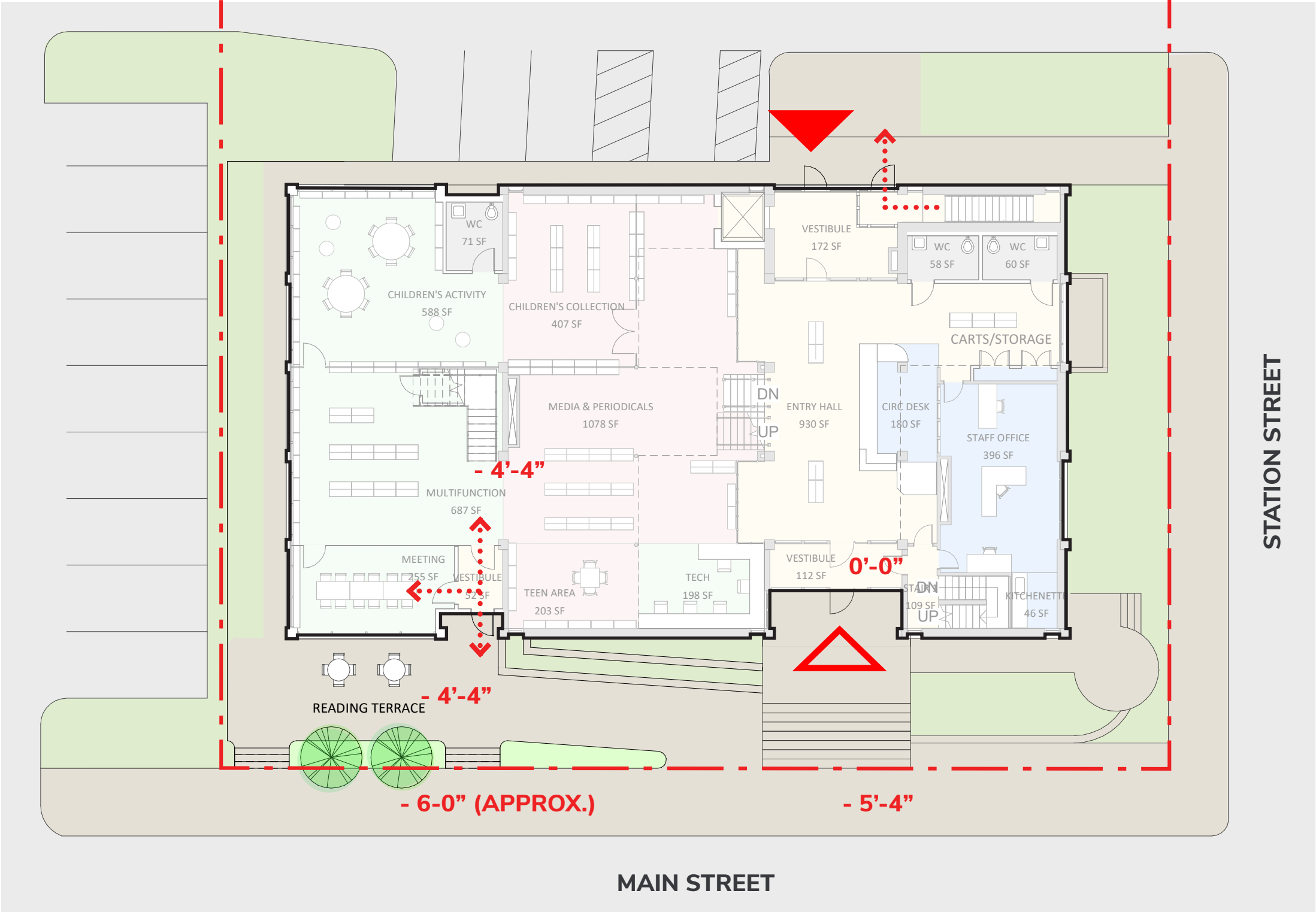
EXISTING CONDITIONS



SOMERSWORTH PUBLIC LIBRARY

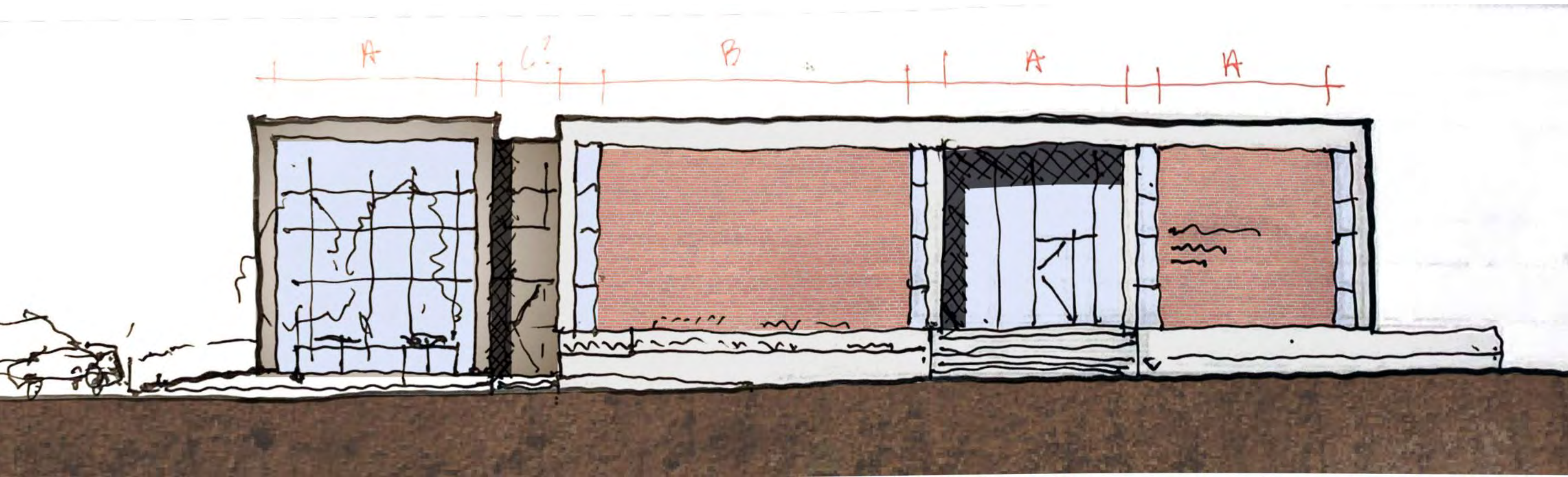
SITE PLAN

- CONVENIENCE/EGRESS DOOR
- BUILDING ENTRANCE (FILLED TRIANGLE INDICATES ACCESSIBLE ENTRANCE)
- PROPERTY LINE (APPROXIMATE)
- APPROXIMATE FLOOR OR WALKING SURFACE ELEVATION RELATIVE TO LEVEL 1



SOMERSWORTH PUBLIC LIBRARY

PROPOSED ELEVATION



LANE MEMORIAL LIBRARY

HAMPTON, NH



NH LIBRARY TRUSTEES ASSOCIATION

6.5.2024

Placework
ARCHITECTURE • PLANNING

LANE MEMORIAL LIBRARY

HAMPTON, NH



The Hampton Hub

PUBLIC LISTENING SESSIONS

Come meet our partners from Placework, learn about the site review process, and see preliminary ideas for the Hampton community center.

LANE MEMORIAL LIBRARY

Weaton J. Lane meeting room

WEDNESDAY
OCTOBER 25TH

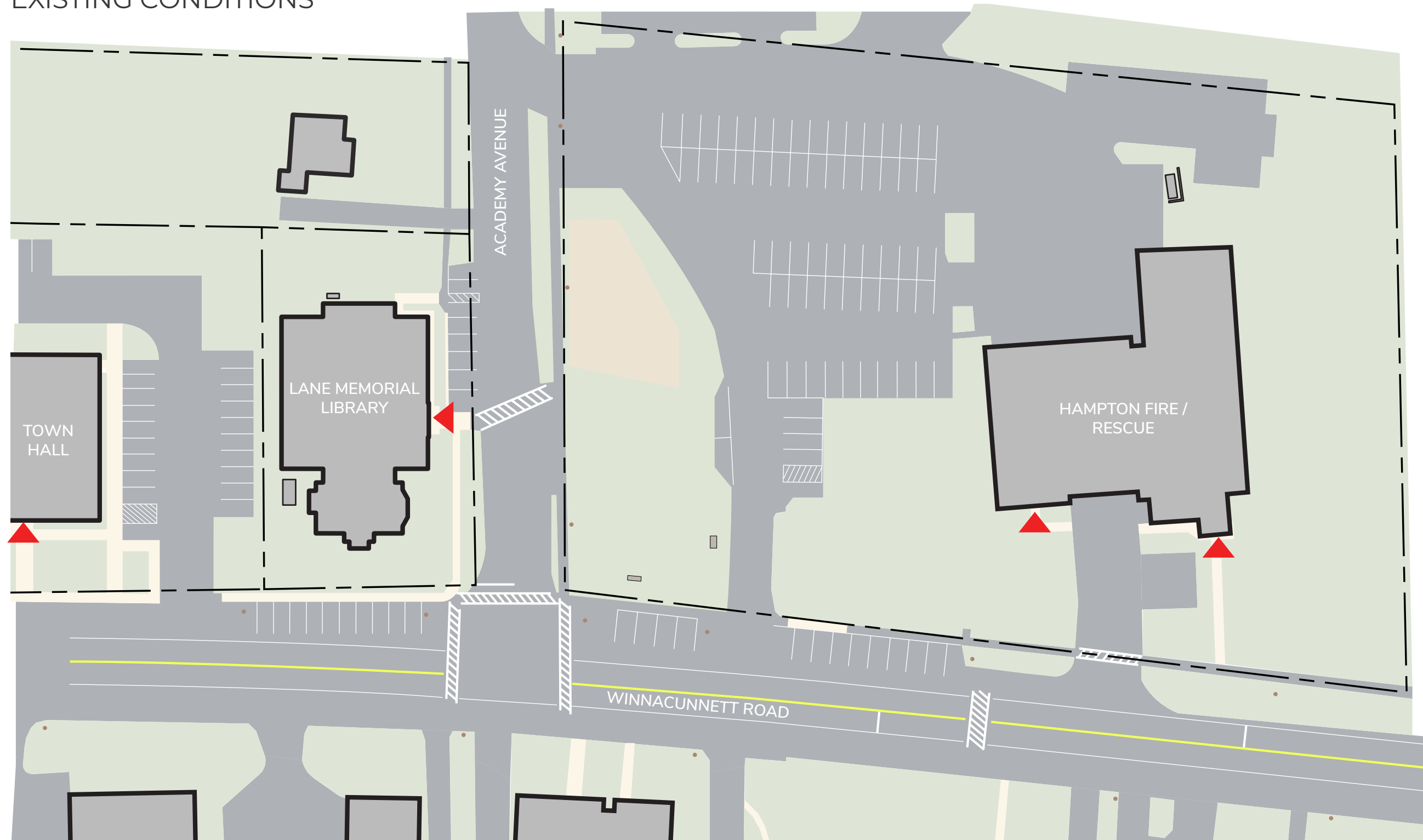
4 PM

or

6 PM

LANE MEMORIAL LIBRARY

EXISTING CONDITIONS



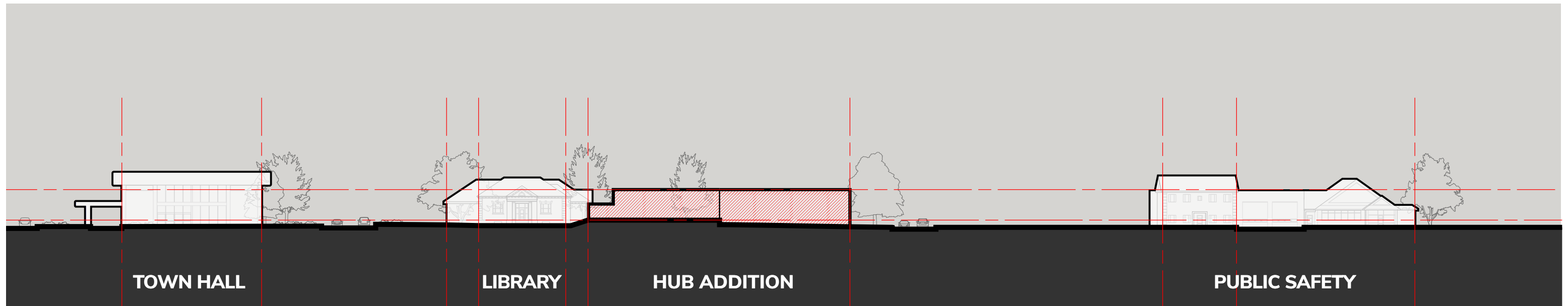
LANE MEMORIAL LIBRARY

EXISTING CONDITIONS



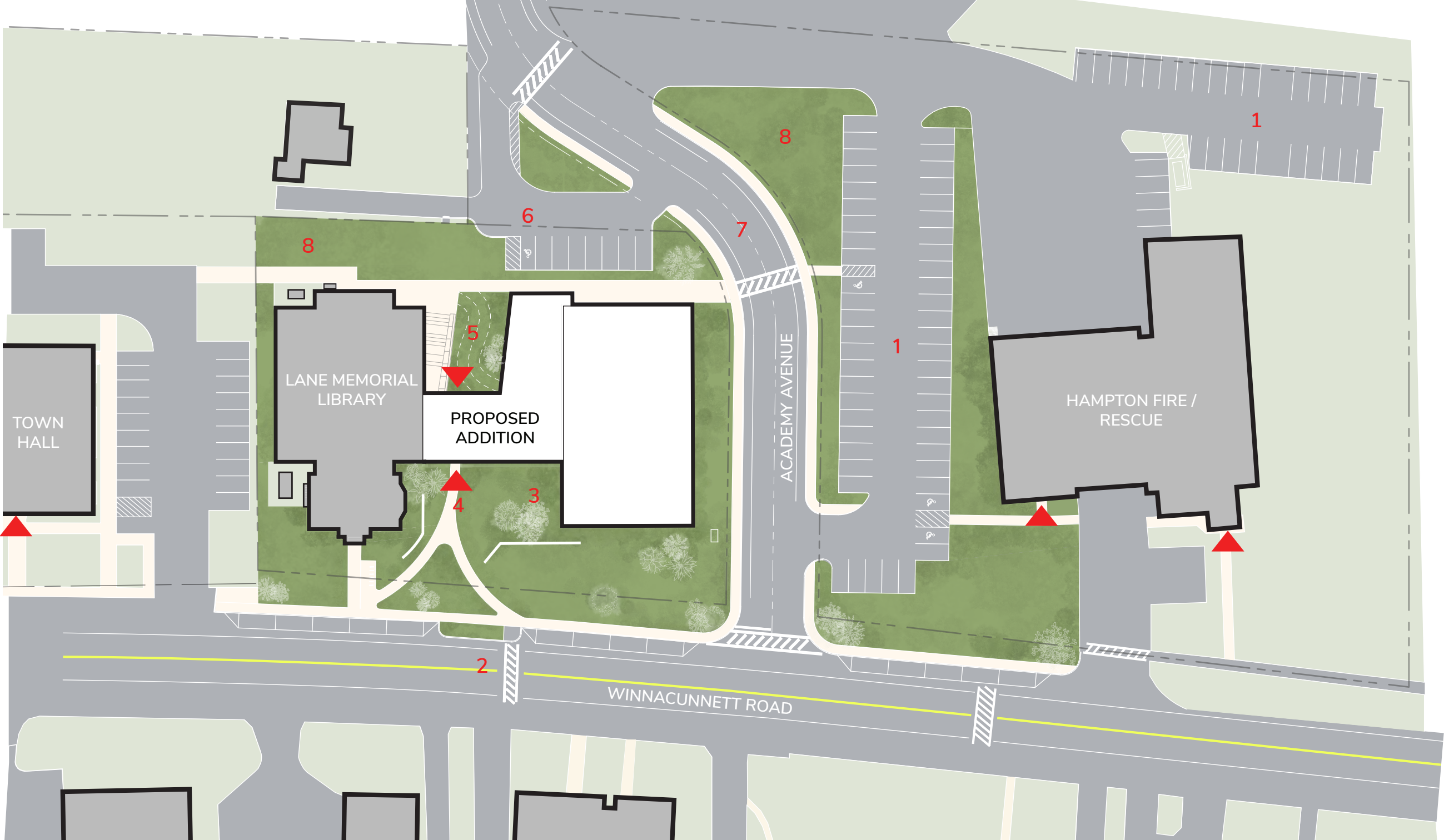
LANE MEMORIAL LIBRARY

PROPOSED ADDITION



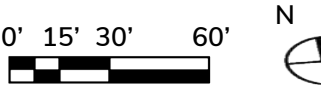
LANE MEMORIAL LIBRARY

SITE PLAN



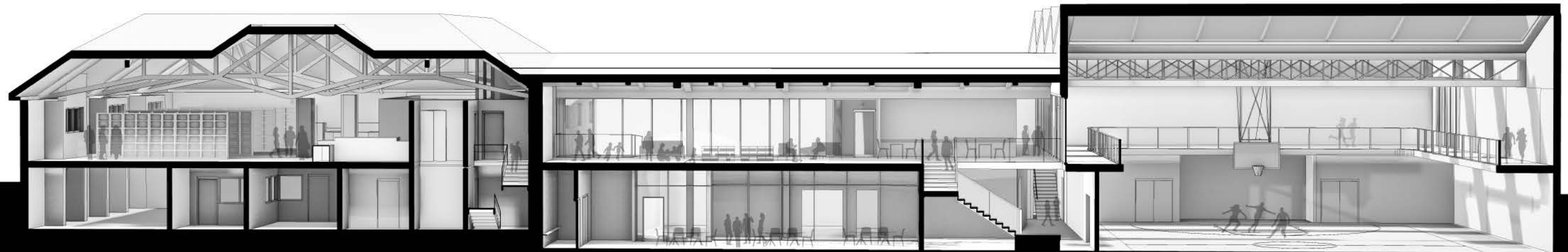
- KEYED NOTES:**
1. SHARED PARKING
 2. STREETScape IMPROVEMENTS ALONG WINNACUNNETT
 3. READING GARDEN
 4. CONSOLIDATED MAIN ENTRY
 5. ACTIVITY TERRACE
 6. NEW DROP-OFF / PRIORITY PARKING
 7. REROUTED ACADEMY AVENUE & PROPERTY LINE ADJUSTMENT
 8. POTENTIAL PLAYGROUND LOCATION, TBD.

- LEGEND:**
- EXISTING STRUCTURE
 - PROPOSED STRUCTURE
 - ACCESSIBLE BUILDING ENTRY
 - BUILDING ENTRY



LANE MEMORIAL LIBRARY

BUILDING SECTION

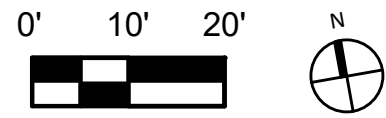


EXISTING BUILDING

ADDITION

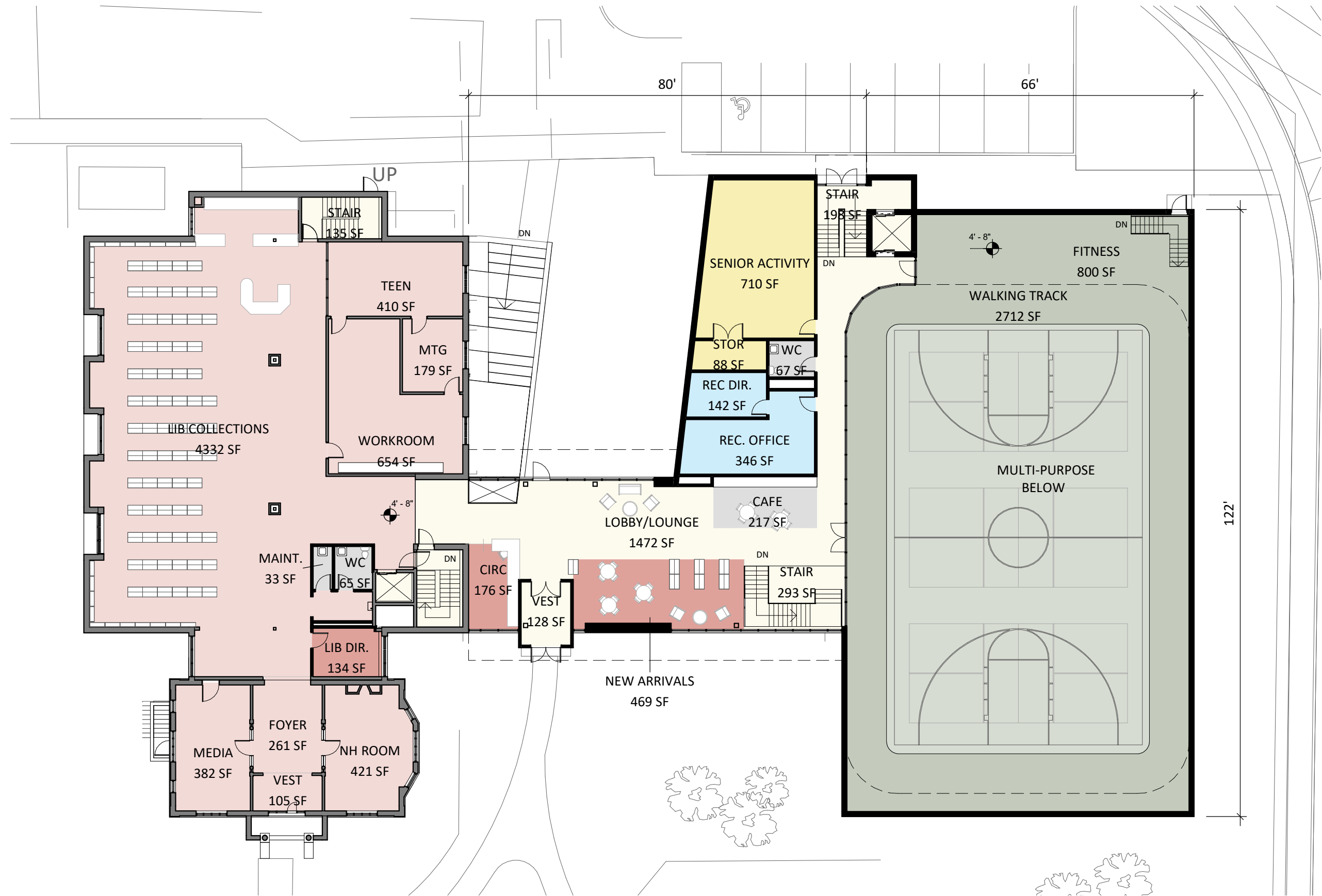
LEVEL 1 PLAN - PROPOSED

RENOVATED SQUARE FOOTAGE: 8,200 GSF
NEW ADDITION SQUARE FOOTAGE: 8,475 GSF



COLOR LEGEND


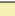
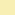

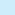



- COMMON/CIRCULATION
- MEETING
- OFFICE
- LIBRARY
- LIBRARY - EXISTING
- RECREATION
- SUPPORT
- BUILDING SERVICE

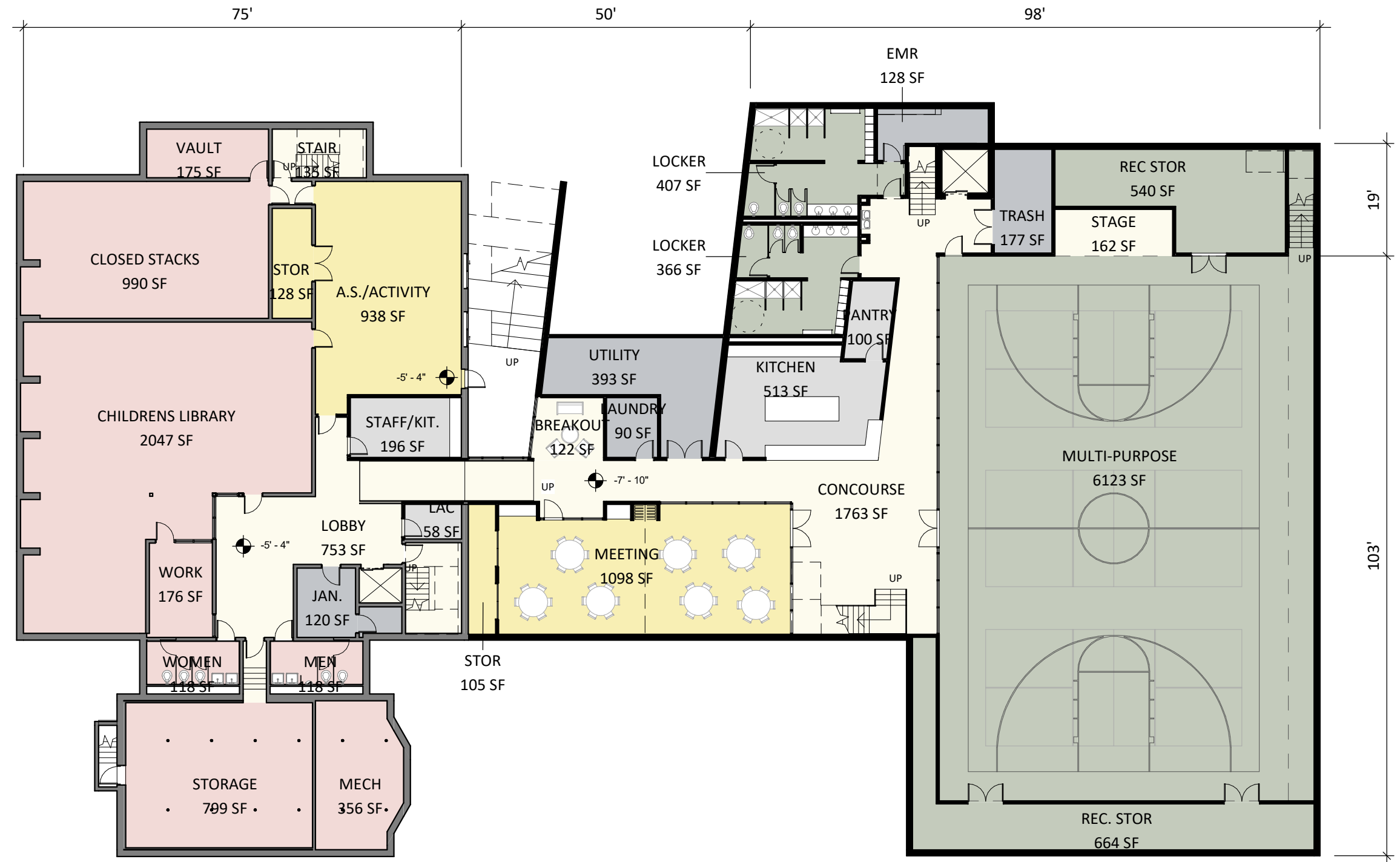


RENOVATED SQUARE FOOTAGE: 8,200 GSF
NEW ADDITION SQUARE FOOTAGE: 13,675 GSF

NEW ADDITION SQUARE FOOTAGE: 13,675 GSF



-  COMMON/CIRCULATION
-  MEETING
-  OFFICE
-  LIBRARY
-  LIBRARY - EXISTING
-  RECREATION
-  SUPPORT
-  BUILDING SERVICE









LESSONS

Embrace 'Possiblism'

Placemaking

"Third places" offer value to their community

Legacy thinking

RESOURCES

Library Space: A Planning Resource for Librarians

Sasaki

AIA/ALA Library Building Awards

American Institute of Architects / American Library Association

Guidelines On Flood Adaptation for Rehabilitating Historic Buildings

US Department of the Interior

American Planning Association

Contact Us!

liz@placework.studio

josh@placework.studio

Want to learn more?

