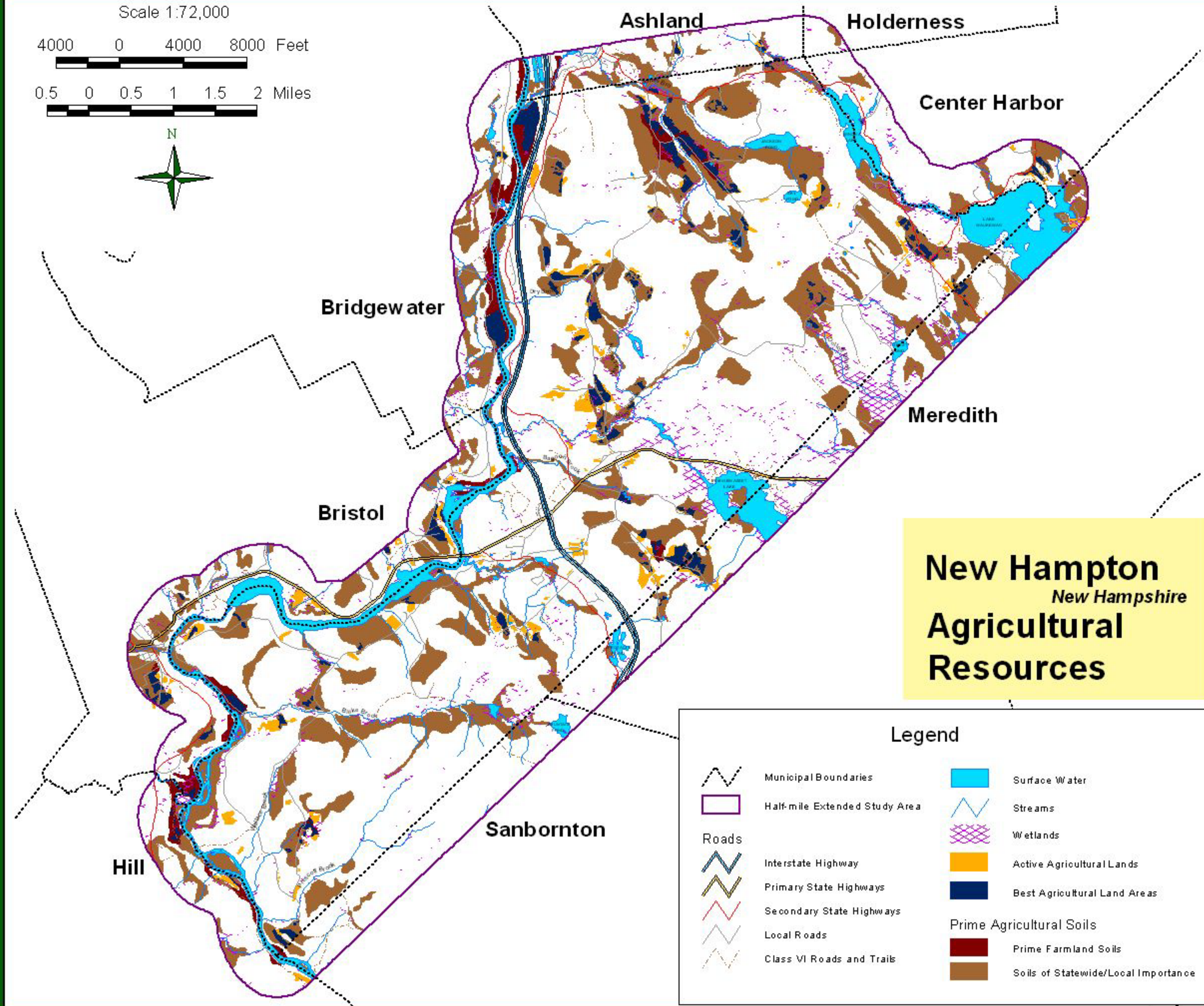
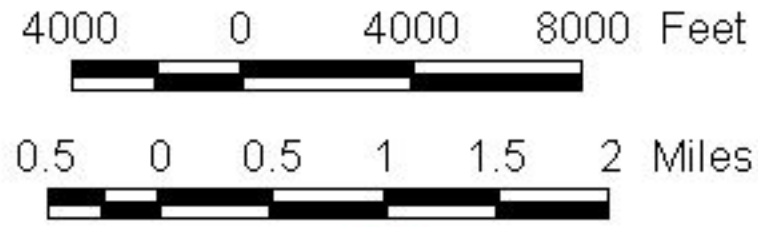


Scale 1:72,000



New Hampton
New Hampshire
Agricultural Resources

Legend

	Municipal Boundaries		Surface Water
	Half-mile Extended Study Area		Streams
Roads			Wetlands
	Interstate Highway		Active Agricultural Lands
	Primary State Highways		Best Agricultural Land Areas
	Secondary State Highways	Prime Agricultural Soils	
	Local Roads		Prime Farmland Soils
	Class VI Roads and Trails		Soils of Statewide/Local Importance

DATA SOURCES:

Roads from the NH Department of Transportation, 2005, distributed by Complex Research Systems Center (CSRC), University of New Hampshire. Other Base map features from standard 7.5-minute USGS quadrangles, 1:24,000 scale, mapped and distributed by CSRC.

Wetlands were derived from U.S. Fish & Wildlife Service, 1:24,000 scale National Wetlands Inventory maps, Natural Resources Conservation Service (NRCS) hydric soils (see soil disclaimer below), and 1998 aerial photography. All primary sources were distributed by CSRC. A windshield survey field verified less than 15% of final mapping; boundaries were estimated to within 50ft (20m). Accurate delineation requires further field review.

Prime agricultural soils mapped by the U.S. Department of Agriculture, Natural Resources Conservation Service and distributed by CSRS. Grafton County soils were released in 1992. The soil information for the Merrimack and Belknap Counties Soil Survey Update is preliminary and subject to change. The spatial, tabular, and narrative data of the Merrimack and Belknap Counties Soil Survey Update was produced by the USDA, NRCS. They are draft products and are being made available as a conditional interim release. The information is subject to change until the survey has undergone final correlation and is SSURGO certified. Data users are responsible for obtaining the most current copy of the data. For further information, contact the NRCS State Soil Scientist, Steve Hundley at (603)868-7581.

The best agricultural lands were estimated from existing soils maps, and an update of active agricultural land as derived from aerial photos and windshield surveys. Prime farmland soils were estimated from a preliminary version of NRCS mapping (see disclaimer above), and reflects current estimates of where prime farmland soils and soils of statewide or local importance exist. The best agricultural lands in New Hampton are shown as the intersection of active agricultural areas and prime agricultural soils.



Digital data in NH GRANIT represent the efforts of the contributing agencies to record information from the cited source materials. Complex Systems Research Center (CSRC), under contract to the Office of Energy and Planning (OEP), and in consultation with cooperating agencies, maintains a continuing program to identify and correct errors in these data. OEP, CSRC, and the cooperating agencies make no claim as to the validity or reliability or to any implied uses of these data.

Ecosystem Management Consultants (EMC) and Plymouth State University (PSU) recognize the inherent limitations to precise positioning of GIS data as supplied by CSRS or any other public agency. They also recognize the limitations of satellite (Landsat) and other remotely-derived data in terms of on-the-ground precision. Any information contained within the written, tabular, or spatial aspects of this NRI is not intended to replace credible survey benchmark data that can be used to uphold legal standing. Like CSRS, EMC and PSU are not responsible for, nor take any liability for any misrepresentation, legal or otherwise, that may arise from the inaccuracy of this data.