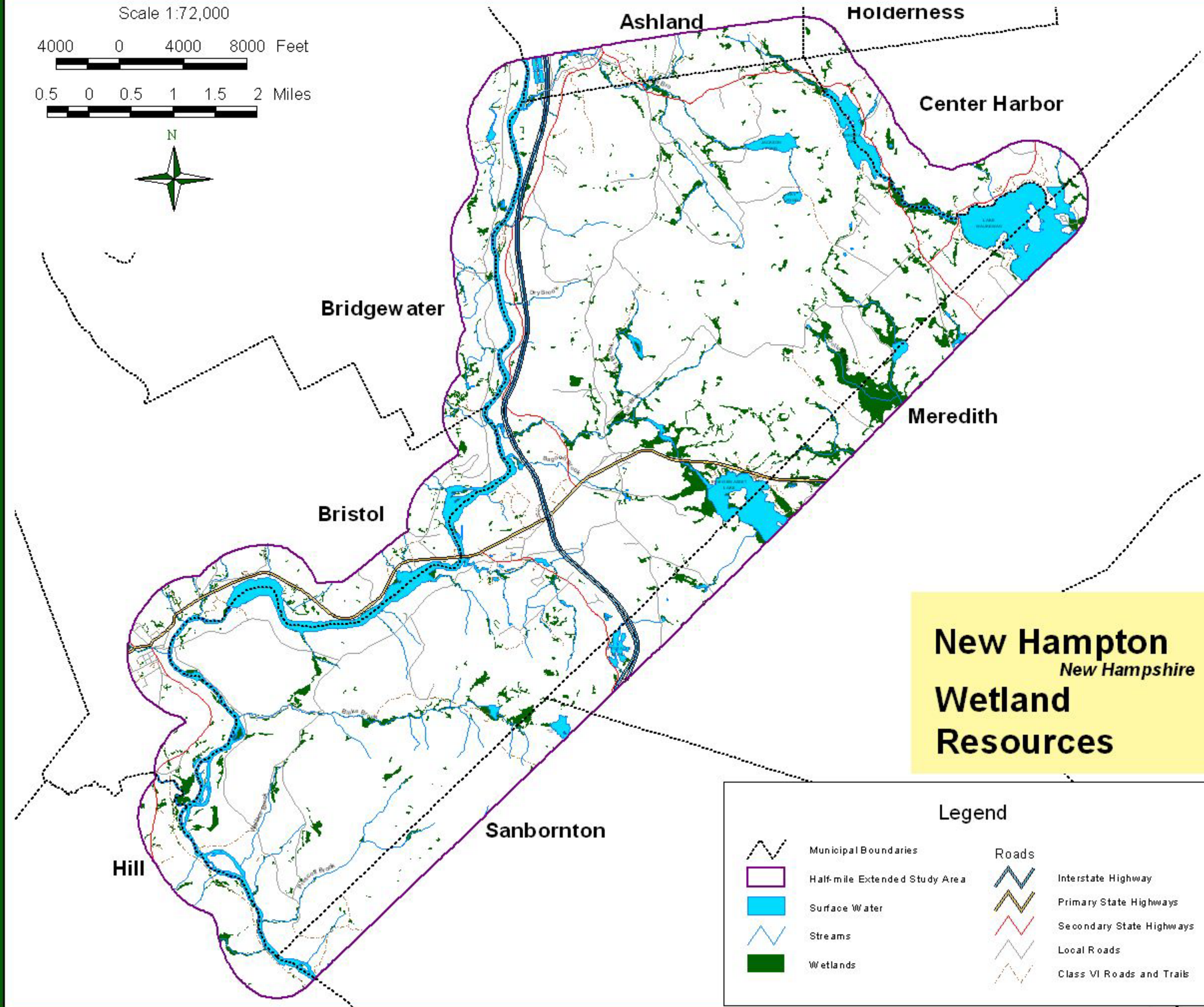


Scale 1:72,000

4000 0 4000 8000 Feet

0.5 0 0.5 1 1.5 2 Miles



DATA SOURCES:

Roads from the NH Department of Transportation, 2005, distributed by Complex Research Systems Center (CSRC), University of New Hampshire. Other Base map features from standard 7.5-minute USGS quadrangles, 1:24,000 scale, mapped and distributed by CSRC.

Wetlands were derived from U.S. Fish & Wildlife Service, 1:24,000 scale National Wetlands Inventory maps, Natural Resources Conservation Service (NRCS) hydric soils (see soil disclaimer below), and 1998 aerial photography. All primary sources were distributed by CSRC. A windshield survey field verified less than 15% of final mapping; boundaries were estimated to within 50ft (20m). Accurate delineation requires further field review.

**New Hampton
New Hampshire
Wetland
Resources**



**Plymouth State
UNIVERSITY**
Center for the Environment

Digital data in NH GRANIT represent the efforts of the contributing agencies to record information from the cited source materials. Complex Systems Research Center (CSRC), under contract to the Office of Energy and Planning (OEP), and in consultation with cooperating agencies, maintains a continuing program to identify and correct errors in these data. OEP, CSRC, and the cooperating agencies make no claim as to the validity or reliability or to any implied uses of these data.

Ecosystem Management Consultants (EMC) and Plymouth State University (PSU) recognize the inherent limitations to precise positioning of GIS data as supplied by CSRS or any other public agency. They also recognize the limitations of satellite (Landsat) and other remotely-derived data in terms of on-the-ground precision. Any information contained within the written, tabular, or spatial aspects of this NRI is not intended to replace credible survey benchmark data that can be used to uphold legal standing. Like CSRS, EMC and PSU are not responsible for, nor take any liability for any misrepresentation, legal or otherwise, that may arise from the inaccuracy of this data.

Legend

	Municipal Boundaries		Roads
	Half-mile Extended Study Area		Interstate Highway
	Surface Water		Primary State Highways
	Streams		Secondary State Highways
	Wetlands		Local Roads
			Class VI Roads and Trails